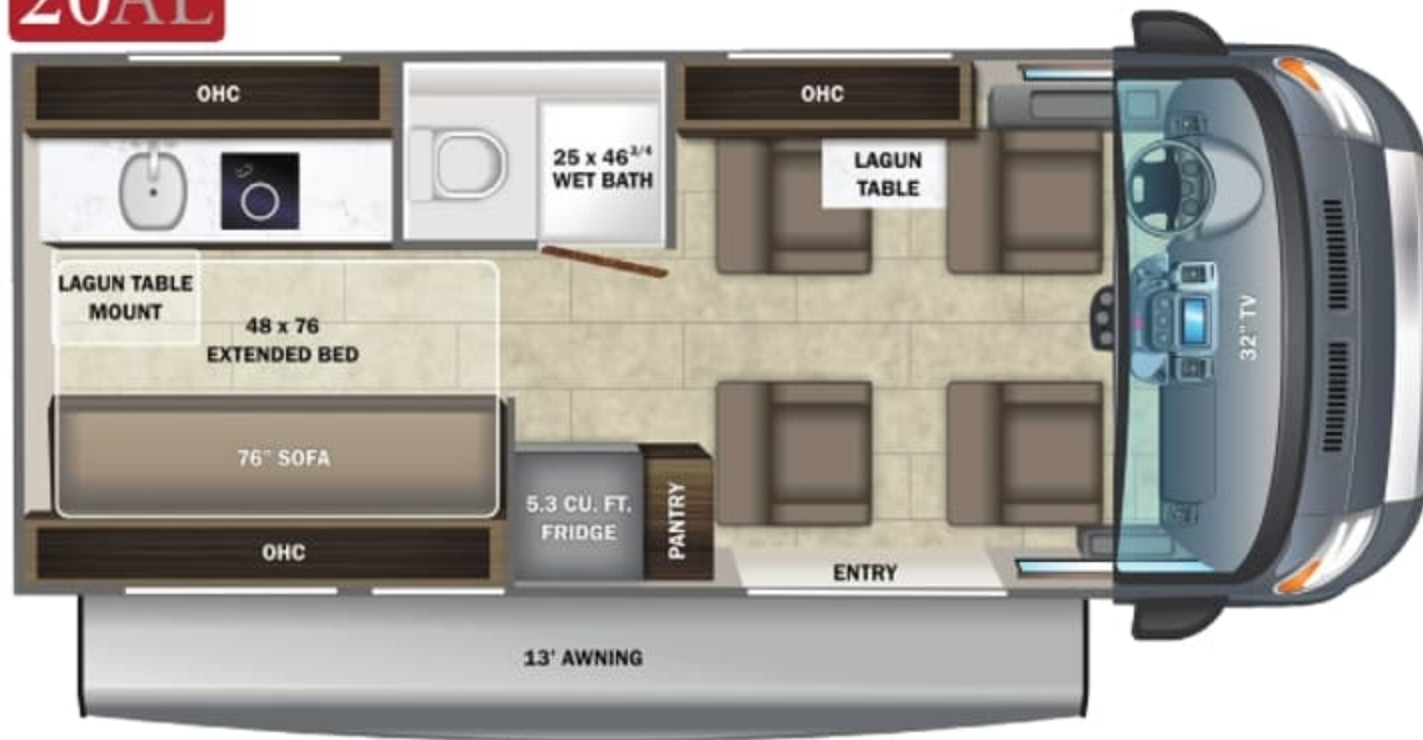
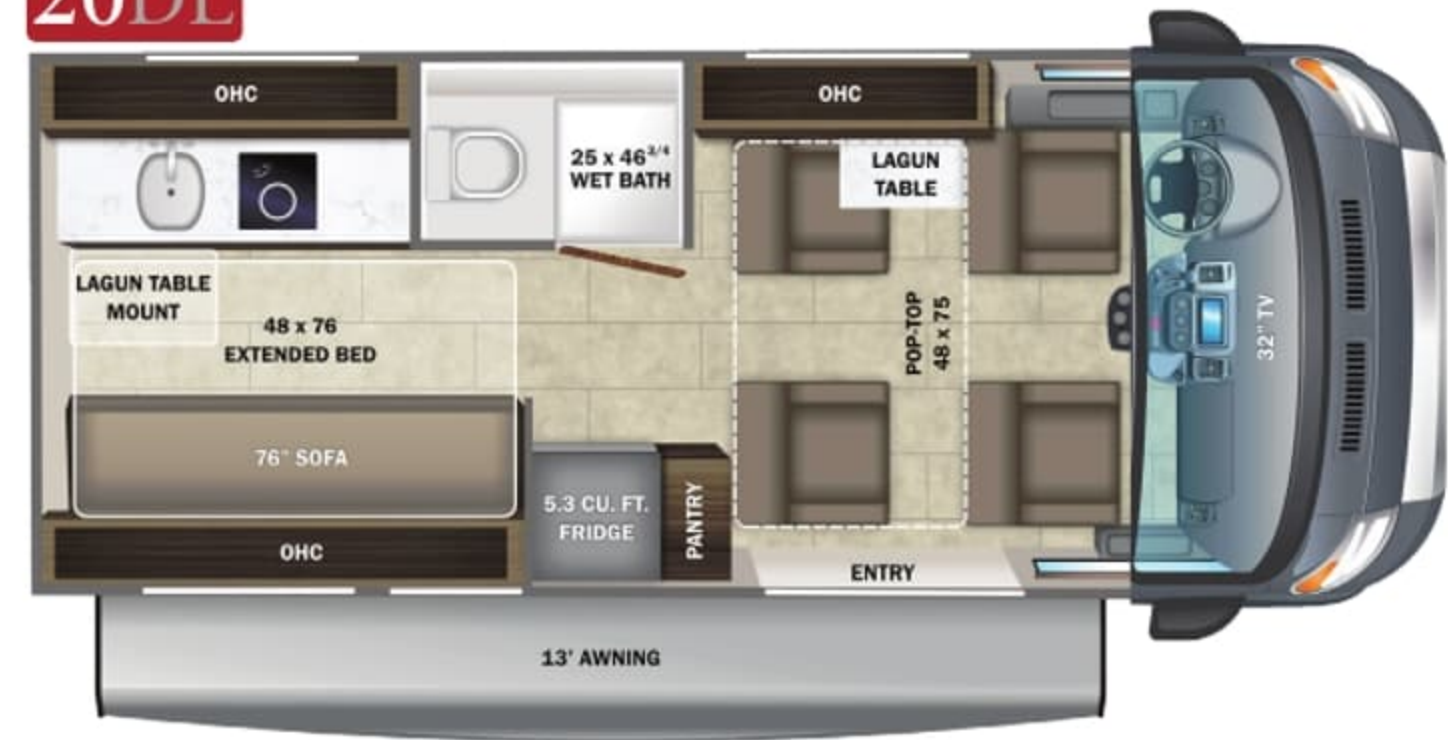


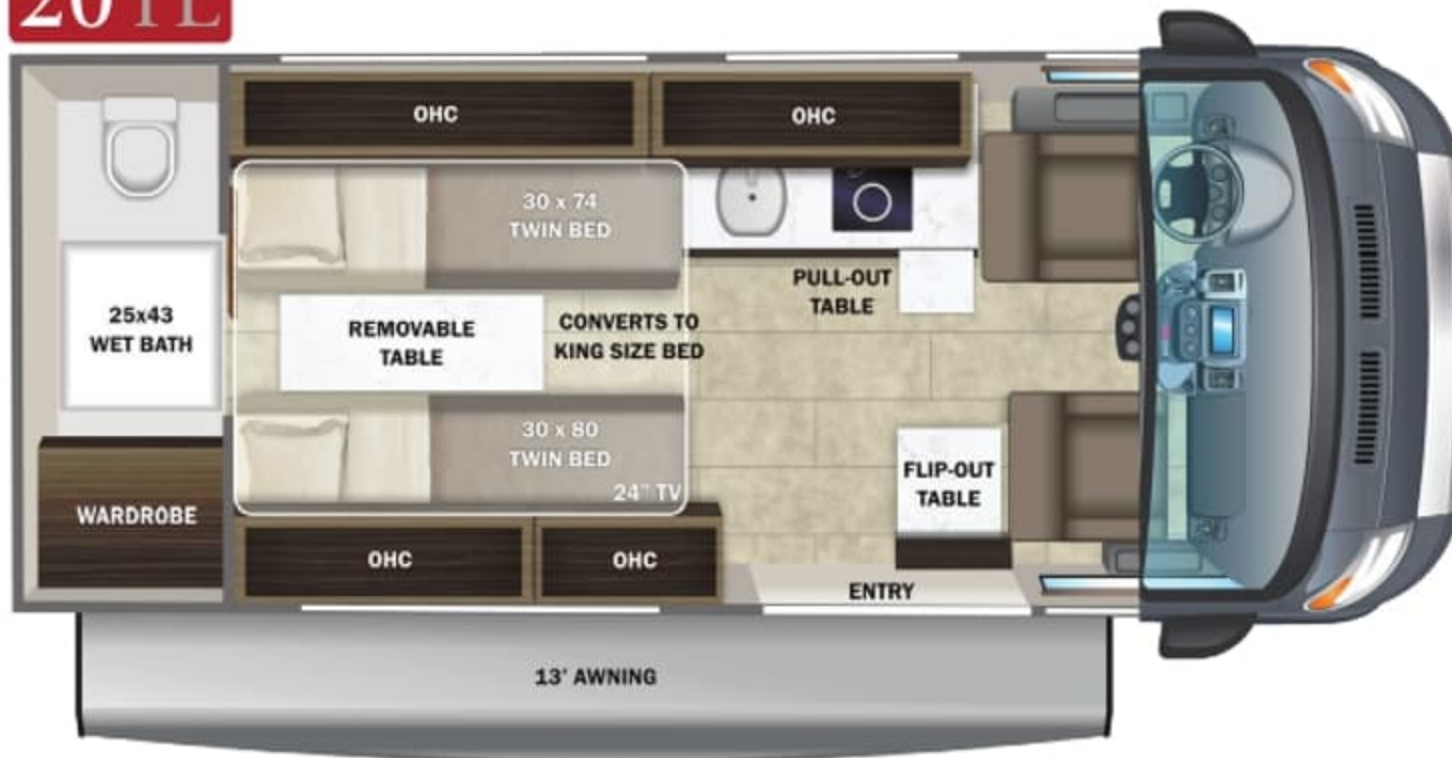
20AL



20DL



20TL



EXTERIOR SELECTIONS



Graphite Van



Silver Van

CUSTOMER VALUE PACKAGE

E-Z DRIVE™: Hellwig helper springs, premium heavy-duty suspension
 Thule® armless patio awning with LED light strip
 Thule® roof rack with (3) cross members
 Induction cooktop
 Timberline hydronic heating system
 Swivel driver and passenger seats with 6-way lumbar adjustment
 Winegard® Connect 2.0 4G/Wi-Fi/digital TV antenna

STANDARD EXTERIOR EQUIPMENT

RAM® ProMaster 3500 window van
 GVWR- 9,350 lb.
 GCWR- 11,500 lb.
 3.6L V6 24V VVT 276HP engine with 250 ft.-lb. torque
 9-speed automatic 948TE transmission
 220 amp alternator
 Aluminum wheels
 Daytime running headlamps
 Power folding/heated side-view mirrors
 ParkSense® rear park assist system
 LT225/75R 16E tires
 3,500 lb. rear hitch receiver with dual 4/7 pin connector
 12V chassis battery
 24 gal. fuel tank (gas)
 Heated holding tanks (12V pads)
 LED-lit running boards for cab and entry doors
 (2) 110V exterior outlets on each side of van
 Portable solar plug
 LED-lit holding tank valves
 Satellite prep
 Outside shower
 48V - 210 amp hour smart lithium battery providing 10KW hours of power
 3,500W inverter
 2nd alternator (48V) dedicated to lithium battery
 200W of roof-mounted solar panels
 Slow charge solar panel for chassis battery

30 amp electrical service with detachable power cord
 13,500 BTU 48V Coleman®-Mach® 10 air conditioner
 Winterization drain system
 Black tank flush
 12V demand water pump
 Water filtration system
 House battery disconnect switch
 Aqua View® SHOWERMISER™ water management system

STANDARD INTERIOR EQUIPMENT

10 in. Uconnect® infotainment center with GPS
 Power windows and door locks
 A/C and cruise control
 Backup camera
 Leather-wrapped steering wheel with integrated controls
 Cab area privacy shade
 Remote keyless entry
 Custom-molded, vinyl-wrapped ABS interior wall panels
 Sliding screen door for entrance door
 Expandable table at entry door with safety grab handle (20TL only)
 Soft-touch vinyl ceiling
 High-intensity LED ceiling lights
 Tecnoform® European-style, high-gloss cabinetry
 Ball-bearing drawer guides
 Residential vinyl flooring
 Firefly Multiplex system
 Sliding vented windows
 Decorative window valances with night roller shades
 Rear magnetic privacy shades
 Removable privacy shade for sliding door window
 Powered roof vent in living area
 (2) additional cab bucket seats (20AL, 20DL)
 32 in. front TV on drop-down bracket (20AL, 20DL)
 24 in. living area TV on swivel bracket (20TL)
 Cable TV hookup with RG-6 coax
 Collapsible dinette table
 5.3 cu. ft. AC/DC refrigerator (20AL, 20DL)
 3.1 cu. ft. AC/DC refrigerator (20TL)
 Convection microwave

Stainless steel sink with glass cover and kitchen accessories
 Solid-surface kitchen countertop with pull-out extension
 Pop-up 110V/USB outlet in kitchen
 (2) twin-size beds with adjustable headrests, Froli® sleep system and filler cushion to convert to king-size bed (20TL only)
 Under-bed storage (20TL only)
 48 in. x 76 in. convertible sofa bed (20AL, 20DL)
 Bathroom wardrobe with drawers
 Shower with magnetic curtain surround
 Toilet with foot flush
 Medicine cabinet with mirror
 Powered roof vent in bathroom
 Seatbelts for driver/passenger seats and select cab locations
 Driver and passenger airbags
 Smoke alarm
 Carbon monoxide detector
 Fire extinguisher

WARRANTY



At Entegra Coach, we build our RVs to handle every adventure, then back them with an outstanding warranty. Our 2-year limited warranty has you covered for 2 camping seasons. That's 730 days. For a copy of our 2-year limited warranty with complete terms and conditions, please contact your local Entegra Coach dealer.

Floorplan	GVWR (lbs.)	GCWR (lbs.)	Wheel Base	Overall Length	Exterior Height w/ A/C & Satellite	Exterior Width	Interior Height	Fresh Water Capacity (gal.)	Grey Waste Water Capacity (gal.)	Black Waste Water Capacity (gal.)
20AL	9,350	11,500	159	20' 11"	9' 3"	83	74	21	16/17	12
20DL	9,350	11,500	159	20' 11"	9' 3"	83	74	21	16/17	12
20TL	9,350	11,500	159	20' 11"	9' 3"	83	74	18	14.5	13

It is important for your safety and enjoyment that you are aware of the weights and tow ratings of the RV you select. Consult a competent advisor for questions or advice. Whether you are new to RVing or a veteran, get a feel for the performance of your RV before heading out on the roadways. When you tow a vehicle with your RV, you must drive differently than when you drive a single vehicle. Practice hooking up, driving, backing up and braking in a safe environment or seek out professional instruction. Jayco affixes a weight label to each RV which lists weight information for that vehicle. Refer to that label to verify the vehicle will meet your requirements. Gross Vehicle Weight Rating (GVWR): The maximum permissible weight of the motorhome, including the Unloaded Vehicle Weight (UVW) plus passengers, personal items, all cargo, fluids, options and dealer-installed accessories. The GVWR is equal to or greater than the sum of the UVW and the Cargo Carrying Capacity. Gross Combined Weight Rating (GCWR): The maximum allowable combined weight of the motorhome used as a tow vehicle and the attached towed vehicle.



Part of Jayco Family of Companies

Entegra Coach, Inc., P.O. Box 460, Middlebury, IN 46540, www.entegracoach.com. See dealer for further information and prices. All information in this brochure is the latest available at the time of publication approval. Entegra Coach reserves the right to make changes and to discontinue models without notice or obligation. Photos in this brochure may show optional equipment and props for photography purposes. RVs built for sale in Canada may differ to conform to Canadian codes. ©2022 Entegra Coach, Inc. Printed in U.S.A. 2032560.2023



entegracoach.com/ethos-li