



BAY STAR

2023 GAS MOTOR COACH



B[★]

BAY STAR

2023 GAS MOTOR COACH

NEWMAR[™]

MUCH MORE THAN MEETS THE EYE.

The Bay Star, as one of our popular gas coaches, is all-new for 2023. Not only will you find fresh styling, upgrades, and features never-before-seen on a Bay Star—there's also plenty more that makes this coach perfect for your adventures.

MUCH MORE THAN MEETS THE EYE.

The Bay Star, as one of our popular gas coaches, is all-new for 2023. Not only will you find fresh styling, upgrades, and features never-before-seen on a Bay Star—there's also plenty more that makes this coach perfect for your adventures.

Ford® F-53 Chassis

7.3-liter V8 Engine // 350 HP // 468 lb./ft. torque

Burma Full-Paint Masterpiece Finish™ Exterior



30'–38' // 11 floor plans

Ford® F-53 Chassis

7.3-liter V8 Engine // 350 HP // 468 lb./ft. torque

Burma Full-Paint Masterpiece Finish™ Exterior



30'–38' // 11 floor plans

COCKPIT

6-Way Power Driver's Seat

Manual Footrest on Passenger Seat

Redesigned Dash and Cockpit Trim

Axxera Dash Radio

Apple CarPlay

Sirius® XM Ready

10" Single Monitor

Harman/JBL 180 Watt Sound System

Two Wireless Charging Pads

Rear and Side-View Cameras

Drop Down Bunk Bed Above Cockpit*

Folding Cockpit Table

*Available on select floor plans

COCKPIT

6-Way Power Driver's Seat

Manual Footrest on Passenger Seat

Redesigned Dash and Cockpit Trim

Axxera Dash Radio

Apple CarPlay

Sirius® XM Ready

10" Single Monitor

Harman/JBL 180 Watt Sound System

Two Wireless Charging Pads

Rear and Side-View Cameras

Drop Down Bunk Bed Above Cockpit*

Folding Cockpit Table

*Available on select floor plans



B⁺

| COCKPIT |

05

2023 // BAY STAR



CABIN

Taller 84" Ceiling Height

**Three New Décor Options:
Burma, Axis, and Colusa**

Newly Designed Furniture*

Wall Sconces

Vanity Light

Samsung® LED TV

Bose® Soundbar (Optional)

Samsung® 32" LED TV in Front Overhead¹ (Optional)

Two 13.5M Penguin™ Heat Pump Air Conditioners

*Multiple configurations available

¹Not available on models with drop down bunk

CABIN

Taller 84" Ceiling Height

**Three New Décor Options:
Burma, Axis, and Colusa**

Newly Designed Furniture*

Wall Sconces

Vanity Light

Samsung® LED TV

Bose® Soundbar (Optional)

Samsung® 32" LED TV in Front Overhead¹ (Optional)

Two 13.5M Penguin™ Heat Pump Air Conditioners

*Multiple configurations available

¹Not available on models with drop down bunk



Floor plan 3629 shown with Burma décor and Glacier cabinets



Floor plan 3629 shown with Burma décor and Glacier cabinets

CABIN

New Slideout Fascia

New Vinyl Tile Flooring

Vinyl Plank Flooring (Optional)

**WiFi Ranger Everest System
with Aspen Router** (Optional)

10.1" Central Monitor Panel*

*New for 2023

CABIN

New Slideout Fascia

New Vinyl Tile Flooring

Vinyl Plank Flooring (Optional)

**WiFi Ranger Everest System
with Aspen Router** (Optional)

10.1" Central Monitor Panel*

*New for 2023





GALLEY

Three Burner Cook Top

Convection Microwave

Norcold® 10 cu. ft. Refrigerator

Five Optional Refrigerator Configurations

Glazed Maple Hardwood Cabinets

Available in Three Matte Finish Color Options

Soft-Close Cabinet Drawers

New Cabinet Door and Drawer Front Style

New Hardware

New Backsplash

Polished Solid-Surface Countertop

New Countertop Edging

Undermounted Stainless Steel Sink

Kitchen Pantry

GALLEY

Three Burner Cook Top

Convection Microwave

Norcold® 10 cu. ft. Refrigerator

Five Optional Refrigerator Configurations

Glazed Maple Hardwood Cabinets

Available in Three Matte Finish Color Options

Soft-Close Cabinet Drawers

New Cabinet Door and Drawer Front Style

New Hardware

New Backsplash

Polished Solid-Surface Countertop

New Countertop Edging

Undermounted Stainless Steel Sink

Kitchen Pantry





DINETTE

Williamsburg Booth Sleeper Dinette

Drawers Underneath

Euro Booth Dinette (Optional*)

*Additional configurations available

DINETTE

Williamsburg Booth Sleeper Dinette

Drawers Underneath

Euro Booth Dinette (Optional*)

*Additional configurations available





MASTER BEDROOM

King Bed*

Pillow Top Mattress (Optional)

Power Adjustable Bed Base (Optional)

Samsung® LED TV

Lighted Wardrobe

Dresser Drawers

*Bed size varies by floor plan

MASTER BEDROOM

King Bed*

Pillow Top Mattress (Optional)

Power Adjustable Bed Base (Optional)

Samsung® LED TV

Lighted Wardrobe

Dresser Drawers

*Bed size varies by floor plan





BATHROOM

Polished Solid-Surface Countertops

40" x 30" or 36" Radius Shower*

Solid-Surface Backsplash**

New Plumbing Fixtures

New Sink

Gas/Electric Water Heater with Electric Ignition

Truma Comfort Plus Continuous Water Heater (Optional)

Linen and Vanity Cabinets

Splendide® Stacked Washer and Dryer (Optional)

*Shower sizes vary by floor plan

**New for 2023

BATHROOM

Polished Solid-Surface Countertops

40" x 30" or 36" Radius Shower*

Solid-Surface Backsplash**

New Plumbing Fixtures

New Sink

Gas/Electric Water Heater with Electric Ignition

Truma Comfort Plus Continuous Water Heater (Optional)

Linen and Vanity Cabinets

Splendide® Stacked Washer and Dryer (Optional)

*Shower sizes vary by floor plan

**New for 2023





EXTERIOR

New Front and Rear Caps

Industry-Exclusive Full-Paint Masterpiece Finish™

Three New Graphic Design and Color Options

SilverStar® Ultra Headlight Bulbs

Exterior Entertainment Center* (Optional)

Samsung® 32" LED TV

AM/FM Radio

Lighted Basement Storage

*Available on select floor plans

EXTERIOR

New Front and Rear Caps

Industry-Exclusive Full-Paint Masterpiece Finish™

Three New Graphic Design and Color Options

SilverStar® Ultra Headlight Bulbs

Exterior Entertainment Center* (Optional)

Samsung® 32" LED TV

AM/FM Radio

Lighted Basement Storage

*Available on select floor plans





EXTERIOR

5.5 kW Cummins Onan® Generator

25w Solar Panel (to charge chassis battery)

EXTERIOR

5.5 kW Cummins Onan® Generator

25w Solar Panel (to charge chassis battery)







INTERIOR/EXTERIOR
DESIGN OPTIONS

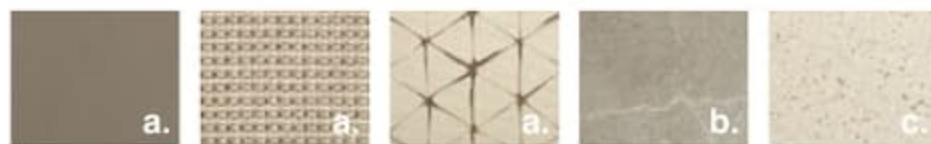


INTERIOR/EXTERIOR
DESIGN OPTIONS



Awning Color: Linen Tweed

AXIS INTERIOR a. Furniture/Fabric b. Flooring c. Counter Top



CABINET FINISHES



*Exterior colors and interior décor options can be matched to customer preference.

*Available in Matte Finish

Axis



Awning Color: Linen Tweed

AXIS INTERIOR a. Furniture/Fabric b. Flooring c. Counter Top



CABINET FINISHES



*Exterior colors and interior décor options can be matched to customer preference.

*Available in Matte Finish

Burma



Awning Color: Charcoal Tweed

BURMA INTERIOR a. Furniture/Fabric b. Flooring c. Counter Top



CABINET FINISHES



*Exterior colors and interior décor options can be matched to customer preference.

*Available in Matte Finish

Burma



Awning Color: Charcoal Tweed

BURMA INTERIOR a. Furniture/Fabric b. Flooring c. Counter Top



CABINET FINISHES



*Exterior colors and interior décor options can be matched to customer preference.

*Available in Matte Finish

Colusa



Awning Color: Charcoal Tweed

COLUSA INTERIOR a. Furniture/Fabric b. Flooring c. Counter Top



CABINET FINISHES



*Exterior colors and interior décor options can be matched to customer preference.

*Available in Matte Finish

Colusa



Awning Color: Charcoal Tweed

COLUSA INTERIOR a. Furniture/Fabric b. Flooring c. Counter Top



CABINET FINISHES



*Exterior colors and interior décor options can be matched to customer preference.

*Available in Matte Finish



FLOOR PLANS &
SPECIFICATIONS

A dark, low-key photograph of an RV interior, showing a living area with a sofa, a dining table, and a kitchen area. A clock is visible on the wall. The image is dimly lit, with the main text overlaid in a bright, golden-yellow color.

FLOOR PLANS & SPECIFICATIONS

Length: 30' 11"



3014

| | | | |
|---------------------|---------|--------------|------------|
| Length | 30' 11" | Grey Tank | 60 gal. |
| Width | 101.5" | Sewage Tank | 40 gal. |
| App. Overall Height | 12' 10" | Water Tank | 75 gal. |
| Interior Width | 95.5" | Propane Tank | 25 gal. |
| Interior Height | 84" | Furnace | 42,000 btu |

Length: 30' 11"



3020

| | | | |
|---------------------|---------|--------------|------------|
| Length | 30' 11" | Grey Tank | 60 gal. |
| Width | 101.5" | Sewage Tank | 40 gal. |
| App. Overall Height | 12' 10" | Water Tank | 75 gal. |
| Interior Width | 95.5" | Propane Tank | 25 gal. |
| Interior Height | 84" | Furnace | 42,000 btu |

Length: 31' 11"



3124

| | | | |
|---------------------|---------|--------------|------------|
| Length | 31' 11" | Grey Tank | 60 gal. |
| Width | 101.5" | Sewage Tank | 40 gal. |
| App. Overall Height | 12' 10" | Water Tank | 75 gal. |
| Interior Width | 95.5" | Propane Tank | 25 gal. |
| Interior Height | 84" | Furnace | 42,000 btu |

Length: 32' 11"



3225

| | | | |
|---------------------|---------|--------------|------------|
| Length | 32' 11" | Grey Tank | 60 gal. |
| Width | 101.5" | Sewage Tank | 40 gal. |
| App. Overall Height | 12' 10" | Water Tank | 75 gal. |
| Interior Width | 95.5" | Propane Tank | 25 gal. |
| Interior Height | 84" | Furnace | 42,000 btu |

★ - new floor plan

Length: 30' 11"



3014

| | | | |
|---------------------|---------|--------------|------------|
| Length | 30' 11" | Grey Tank | 60 gal. |
| Width | 101.5" | Sewage Tank | 40 gal. |
| App. Overall Height | 12' 10" | Water Tank | 75 gal. |
| Interior Width | 95.5" | Propane Tank | 25 gal. |
| Interior Height | 84" | Furnace | 42,000 btu |

Length: 30' 11"



3020

| | | | |
|---------------------|---------|--------------|------------|
| Length | 30' 11" | Grey Tank | 60 gal. |
| Width | 101.5" | Sewage Tank | 40 gal. |
| App. Overall Height | 12' 10" | Water Tank | 75 gal. |
| Interior Width | 95.5" | Propane Tank | 25 gal. |
| Interior Height | 84" | Furnace | 42,000 btu |

Length: 31' 11"



3124

| | | | |
|---------------------|---------|--------------|------------|
| Length | 31' 11" | Grey Tank | 60 gal. |
| Width | 101.5" | Sewage Tank | 40 gal. |
| App. Overall Height | 12' 10" | Water Tank | 75 gal. |
| Interior Width | 95.5" | Propane Tank | 25 gal. |
| Interior Height | 84" | Furnace | 42,000 btu |

Length: 32' 11"

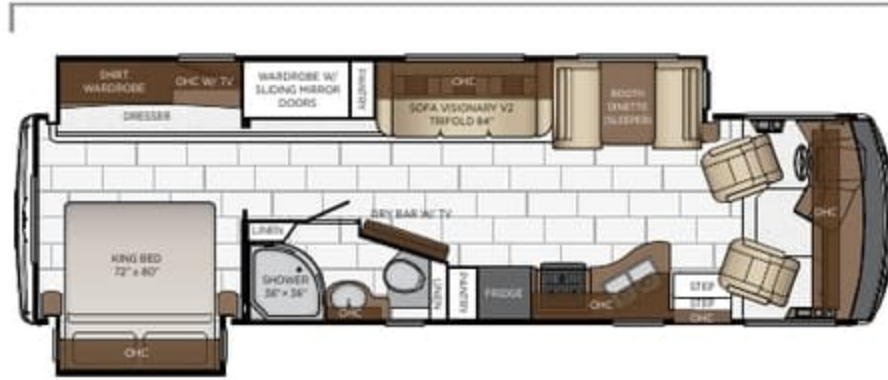


3225

| | | | |
|---------------------|---------|--------------|------------|
| Length | 32' 11" | Grey Tank | 60 gal. |
| Width | 101.5" | Sewage Tank | 40 gal. |
| App. Overall Height | 12' 10" | Water Tank | 75 gal. |
| Interior Width | 95.5" | Propane Tank | 25 gal. |
| Interior Height | 84" | Furnace | 42,000 btu |

★ - new floor plan

Length: 34' 11"



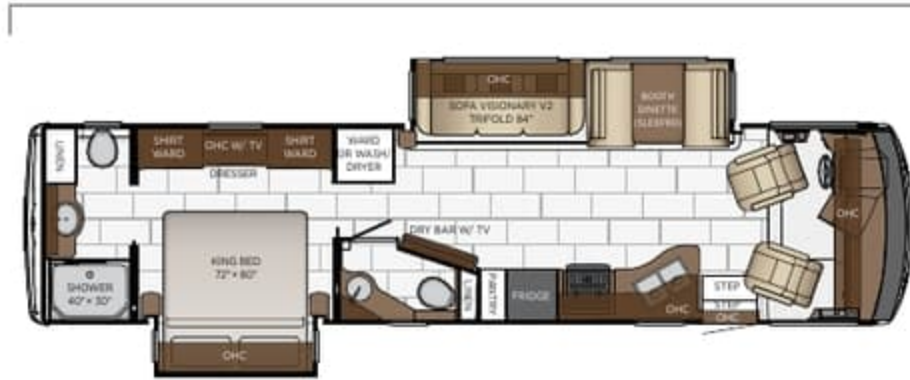
| | | | | |
|-------------|---------------------|---------|--------------|------------|
| 3401 | Length | 34' 11" | Grey Tank | 60 gal. |
| | Width | 101.5" | Sewage Tank | 40 gal. |
| | App. Overall Height | 12' 10" | Water Tank | 75 gal. |
| | Interior Width | 95.5" | Propane Tank | 25 gal. |
| | Interior Height | 84" | Furnace | 42,000 btu |

Length: 34' 11"



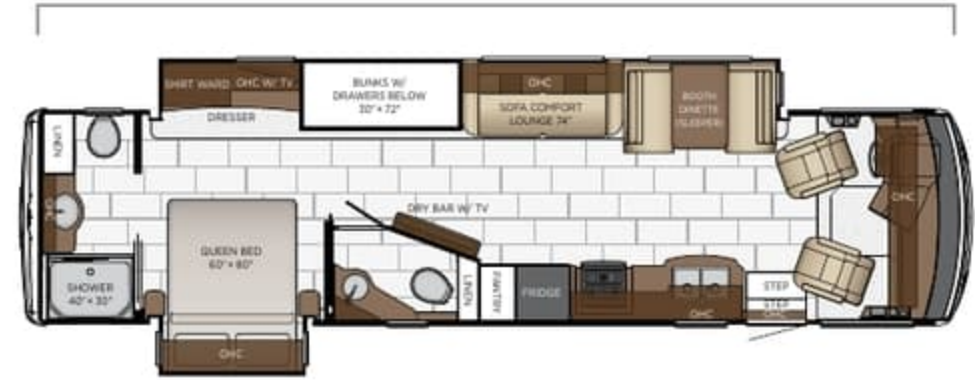
| | | | | |
|-------------|---------------------|---------|--------------|------------|
| 3408 | Length | 34' 11" | Grey Tank | 60 gal. |
| | Width | 101.5" | Sewage Tank | 40 gal. |
| | App. Overall Height | 12' 10" | Water Tank | 75 gal. |
| | Interior Width | 95.5" | Propane Tank | 25 gal. |
| | Interior Height | 84" | Furnace | 42,000 btu |

Length: 36' 11"



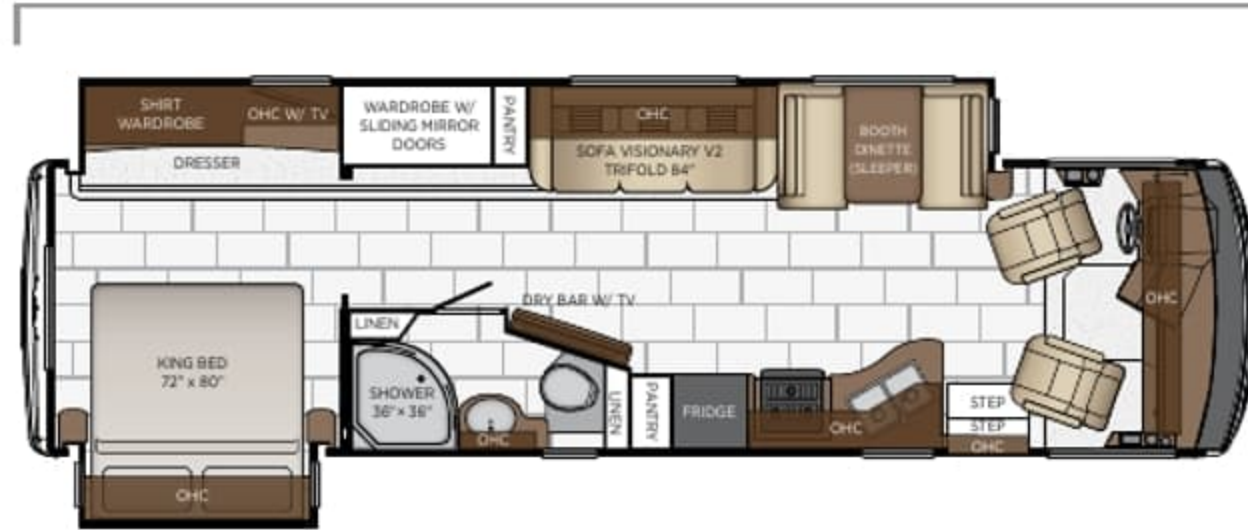
| | | | | |
|-------------|---------------------|---------|--------------|------------|
| 3609 | Length | 36' 11" | Grey Tank | 60 gal. |
| | Width | 101.5" | Sewage Tank | 92 gal. |
| | App. Overall Height | 12' 10" | Water Tank | 75 gal. |
| | Interior Width | 95.5" | Propane Tank | 25 gal. |
| | Interior Height | 84" | Furnace | 42,000 btu |

Length: 36' 11"



| | | | | |
|-------------|---------------------|---------|--------------|------------|
| 3616 | Length | 36' 11" | Grey Tank | 60 gal. |
| | Width | 101.5" | Sewage Tank | 92 gal. |
| | App. Overall Height | 12' 10" | Water Tank | 75 gal. |
| | Interior Width | 95.5" | Propane Tank | 25 gal. |
| | Interior Height | 84" | Furnace | 42,000 btu |

Length: 34' 11"



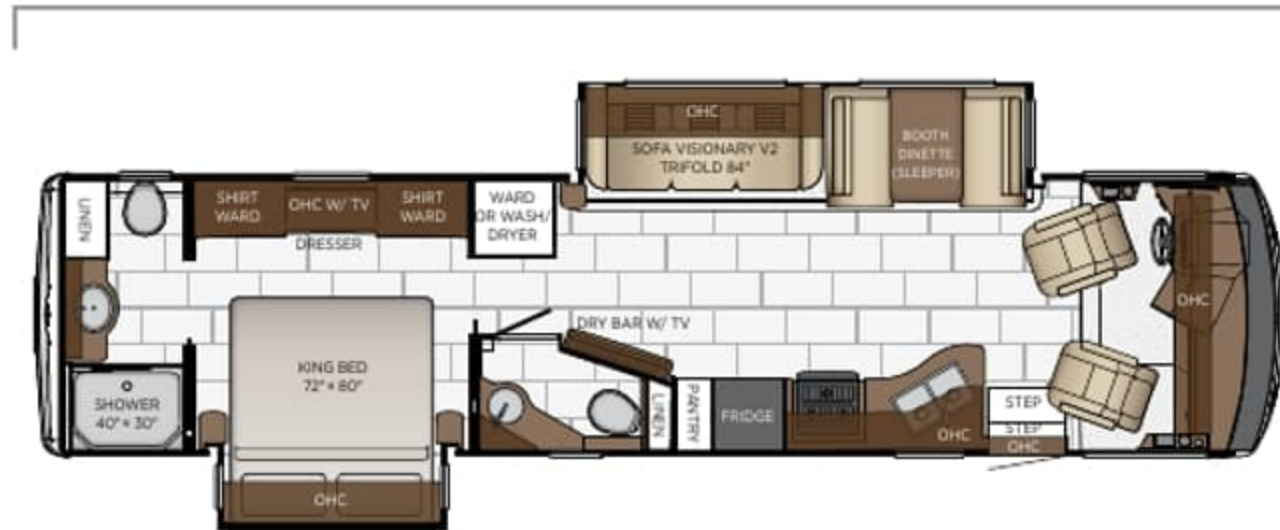
| | | | | |
|-------------|---------------------|---------|--------------|------------|
| 3401 | Length | 34' 11" | Grey Tank | 60 gal. |
| | Width | 101.5" | Sewage Tank | 40 gal. |
| | App. Overall Height | 12' 10" | Water Tank | 75 gal. |
| | Interior Width | 95.5" | Propane Tank | 25 gal. |
| | Interior Height | 84" | Furnace | 42,000 btu |

Length: 34' 11"



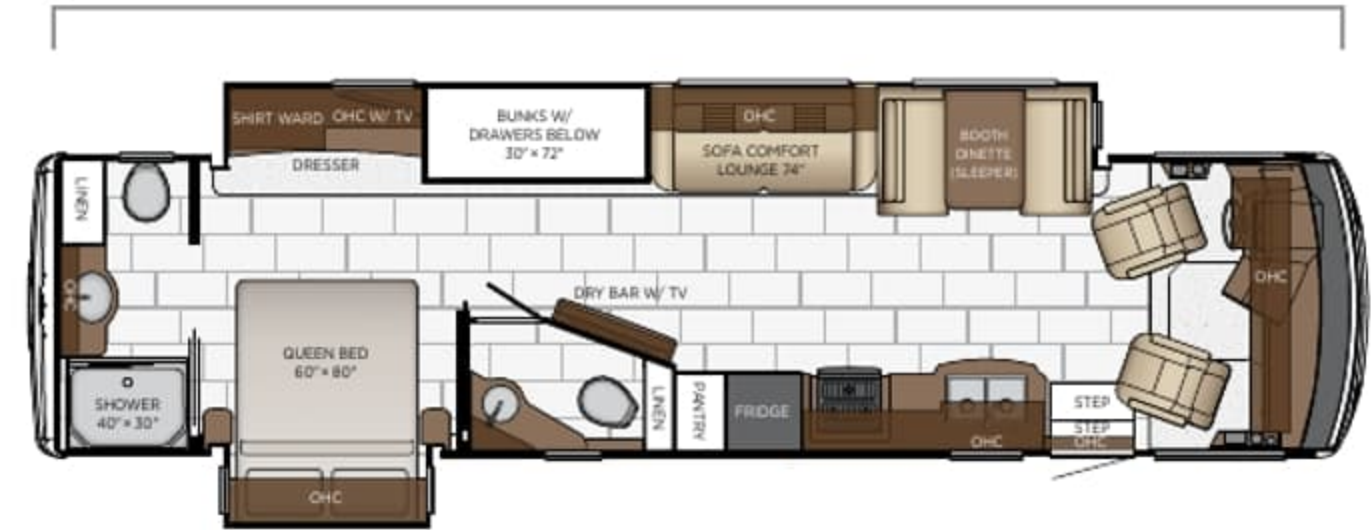
| | | | | |
|-------------|---------------------|---------|--------------|------------|
| 3408 | Length | 34' 11" | Grey Tank | 60 gal. |
| | Width | 101.5" | Sewage Tank | 40 gal. |
| | App. Overall Height | 12' 10" | Water Tank | 75 gal. |
| | Interior Width | 95.5" | Propane Tank | 25 gal. |
| | Interior Height | 84" | Furnace | 42,000 btu |

Length: 36' 11"



| | | | | |
|-------------|---------------------|---------|--------------|------------|
| 3609 | Length | 36' 11" | Grey Tank | 60 gal. |
| | Width | 101.5" | Sewage Tank | 92 gal. |
| | App. Overall Height | 12' 10" | Water Tank | 75 gal. |
| | Interior Width | 95.5" | Propane Tank | 25 gal. |
| | Interior Height | 84" | Furnace | 42,000 btu |

Length: 36' 11"



| | | | | |
|-------------|---------------------|---------|--------------|------------|
| 3616 | Length | 36' 11" | Grey Tank | 60 gal. |
| | Width | 101.5" | Sewage Tank | 92 gal. |
| | App. Overall Height | 12' 10" | Water Tank | 75 gal. |
| | Interior Width | 95.5" | Propane Tank | 25 gal. |
| | Interior Height | 84" | Furnace | 42,000 btu |



| | | | | |
|-------------|---------------------|---------|--------------|------------|
| 3626 | Length | 36' 11" | Grey Tank | 60 gal. |
| | Width | 101.5" | Sewage Tank | 40 gal. |
| | App. Overall Height | 12' 10" | Water Tank | 75 gal. |
| | Interior Width | 95.5" | Propane Tank | 25 gal. |
| | Interior Height | 84" | Furnace | 42,000 btu |



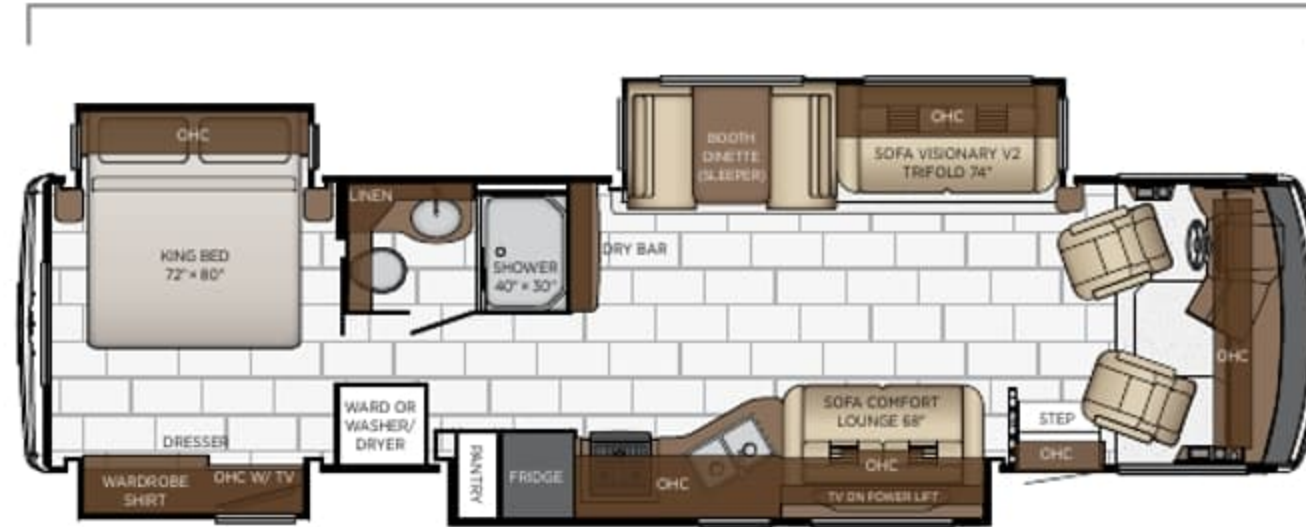
| | | | | |
|-------------|---------------------|---------|--------------|------------|
| 3629 | Length | 36' 11" | Grey Tank | 60 gal. |
| | Width | 101.5" | Sewage Tank | 92 gal. |
| | App. Overall Height | 12' 10" | Water Tank | 75 gal. |
| | Interior Width | 95.5" | Propane Tank | 25 gal. |
| | Interior Height | 84" | Furnace | 42,000 btu |



| | | | | |
|-------------|---------------------|---------|--------------|------------|
| 3811 | Length | 38' 11" | Grey Tank | 60 gal. |
| | Width | 101.5" | Sewage Tank | 40 gal. |
| | App. Overall Height | 12' 10" | Water Tank | 75 gal. |
| | Interior Width | 95.5" | Propane Tank | 25 gal. |
| | Interior Height | 84" | Furnace | 42,000 btu |

★ - new floor plan

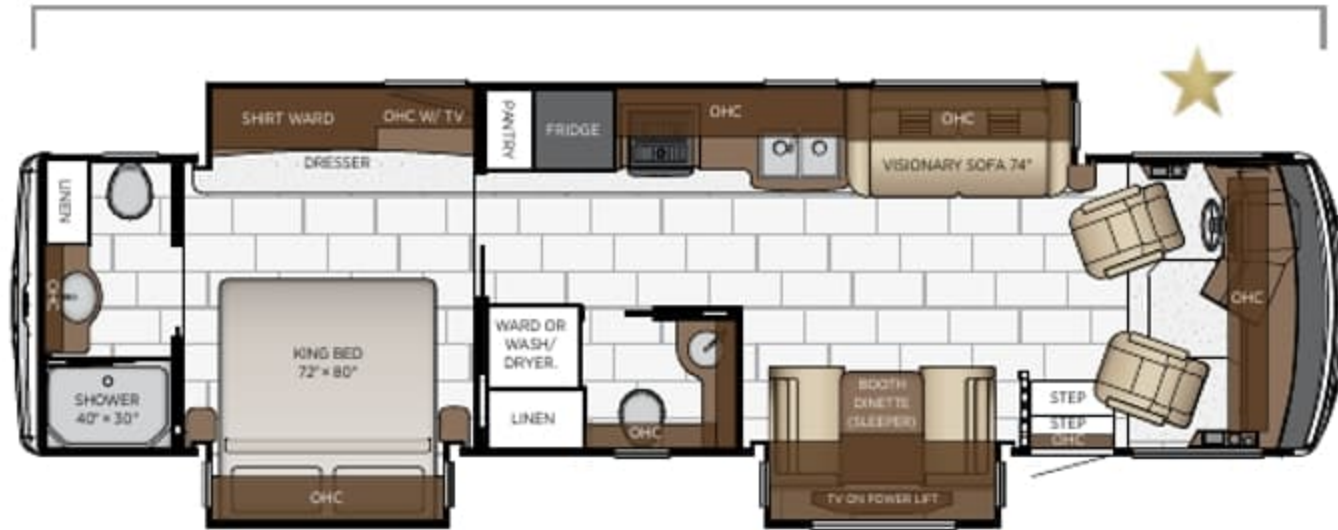
Length: 36' 11"



3626

| | | | |
|---------------------|---------|--------------|------------|
| Length | 36' 11" | Grey Tank | 60 gal. |
| Width | 101.5" | Sewage Tank | 40 gal. |
| App. Overall Height | 12' 10" | Water Tank | 75 gal. |
| Interior Width | 95.5" | Propane Tank | 25 gal. |
| Interior Height | 84" | Furnace | 42,000 btu |

Length: 36' 11"



3629

| | | | |
|---------------------|---------|--------------|------------|
| Length | 36' 11" | Grey Tank | 60 gal. |
| Width | 101.5" | Sewage Tank | 92 gal. |
| App. Overall Height | 12' 10" | Water Tank | 75 gal. |
| Interior Width | 95.5" | Propane Tank | 25 gal. |
| Interior Height | 84" | Furnace | 42,000 btu |

Length: 38' 11"



3811

| | | | |
|---------------------|---------|--------------|------------|
| Length | 38' 11" | Grey Tank | 60 gal. |
| Width | 101.5" | Sewage Tank | 40 gal. |
| App. Overall Height | 12' 10" | Water Tank | 75 gal. |
| Interior Width | 95.5" | Propane Tank | 25 gal. |
| Interior Height | 84" | Furnace | 42,000 btu |

★ - new floor plan

QUALITY YOU CAN FEEL

Like a fine home, the 2023 Bay Star is framed 16 inches on center, and is covered by a fiberglass roof with an integrated gutter rail.

| FORD® | | | | | | | | | | |
|------------|-----------|------------|-----------|------------|------------|-----------|-----------|-----------|-----------|----------|
| FLOOR PLAN | ENGINE HP | AXLE RATIO | FUEL CAP. | WHEEL BASE | FRONT GAWR | REAR GAWR | GVWR | GCWR | APP. UVW | APP. NCC |
| 3014 | 350 | 6.14 | 80 gal. | 210 | 9000 lb. | 15500 lb. | 24000 lb. | 30000 lb. | 20200 lb. | 3800 lb. |
| 3020 | 350 | 6.14 | 80 gal. | 210 | 9000 lb. | 15500 lb. | 24000 lb. | 30000 lb. | 20200 lb. | 3800 lb. |
| 3124 | 350 | 6.14 | 80 gal. | 222 | 9000 lb. | 15500 lb. | 24000 lb. | 30000 lb. | 20450 lb. | 3550 lb. |
| 3225 | 350 | 6.14 | 80 gal. | 228 | 9000 lb. | 15500 lb. | 24000 lb. | 30000 lb. | 21300 lb. | 2700 lb. |
| 3401 | 350 | 6.14 | 80 gal. | 234 | 9000 lb. | 17500 lb. | 26000 lb. | 30000 lb. | 21200 lb. | 4800 lb. |
| 3408 | 350 | 6.14 | 80 gal. | 234 | 9000 lb. | 17500 lb. | 26000 lb. | 30000 lb. | 22050 lb. | 3950 lb. |
| 3609 | 350 | 6.14 | 80 gal. | 242 | 9000 lb. | 17500 lb. | 26000 lb. | 30000 lb. | 21300 lb. | 4700 lb. |
| 3616 | 350 | 6.14 | 80 gal. | 242 | 9000 lb. | 17500 lb. | 26000 lb. | 30000 lb. | 22050 lb. | 3950 lb. |
| 3626 | 350 | 6.14 | 80 gal. | 242 | 9000 lb. | 17500 lb. | 26000 lb. | 30000 lb. | 22750 lb. | 3250 lb. |
| 3629 | 350 | 6.14 | 80 gal. | 242 | 9000 lb. | 17500 lb. | 26000 lb. | 30000 lb. | 22700 lb. | 3300 lb. |
| 3811 | 350 | 6.14 | 80 gal. | 254 | 9000 lb. | 17500 lb. | 26000 lb. | 30000 lb. | 22750 lb. | 3250 lb. |

The content in our literature depicts and describes products that are subject to change. For the most recent images and information, please visit NewmarCorp.com.

Lengths, heights, widths, and dry weights are approximate. Weight will vary based on optional equipment added to the above base weight.

GAWR: Gross Axle Weight Rating is the maximum permissible weight for an axle.

GVWR: Gross Vehicle Weight Rating is the maximum permissible weight for a fully loaded motor coach.

GCWR: Gross Combination Weight Rating is the value specified by the manufacturer of the vehicle as the maximum allowable loaded weight of this motor coach and any towed trailer or towed vehicle.

UVW: Unloaded Vehicle Weight is the weight of this motor coach as built at the factory with full fuel, engine oil, and coolants. Does not include cargo, fresh water, propane gas, or dealer-installed accessories.

NCC: Net Carrying Capacity is the maximum weight of all occupants, including the driver, personal belongings, food, fresh water, waste water, propane gas, tools, tongue weight of towed vehicle, dealer-installed accessories, etc., that can be carried by the motor coach.

Specifications supplied by the chassis manufacturer.

Bay Star R-Values:

Roof R-Value = 19

Sidewall R-Value = 11

Floor R-Value = 16

Basement R-Value = 4

QUALITY YOU CAN FEEL

Like a fine home, the 2023 Bay Star is framed 16 inches on center, and is covered by a fiberglass roof with an integrated gutter rail.

| FORD* | | | | | | | | | | |
|------------|-----------|------------|-----------|------------|------------|-----------|-----------|-----------|-----------|----------|
| FLOOR PLAN | ENGINE HP | AXLE RATIO | FUEL CAP. | WHEEL BASE | FRONT GAWR | REAR GAWR | GVWR | GCWR | APP. UVW | APP. NCC |
| 3014 | 350 | 6.14 | 80 gal. | 210 | 9000 lb. | 15500 lb. | 24000 lb. | 30000 lb. | 20200 lb. | 3800 lb. |
| 3020 | 350 | 6.14 | 80 gal. | 210 | 9000 lb. | 15500 lb. | 24000 lb. | 30000 lb. | 20200 lb. | 3800 lb. |
| 3124 | 350 | 6.14 | 80 gal. | 222 | 9000 lb. | 15500 lb. | 24000 lb. | 30000 lb. | 20450 lb. | 3550 lb. |
| 3225 | 350 | 6.14 | 80 gal. | 228 | 9000 lb. | 15500 lb. | 24000 lb. | 30000 lb. | 21300 lb. | 2700 lb. |
| 3401 | 350 | 6.14 | 80 gal. | 234 | 9000 lb. | 17500 lb. | 26000 lb. | 30000 lb. | 21200 lb. | 4800 lb. |
| 3408 | 350 | 6.14 | 80 gal. | 234 | 9000 lb. | 17500 lb. | 26000 lb. | 30000 lb. | 22050 lb. | 3950 lb. |
| 3609 | 350 | 6.14 | 80 gal. | 242 | 9000 lb. | 17500 lb. | 26000 lb. | 30000 lb. | 21300 lb. | 4700 lb. |
| 3616 | 350 | 6.14 | 80 gal. | 242 | 9000 lb. | 17500 lb. | 26000 lb. | 30000 lb. | 22050 lb. | 3950 lb. |
| 3626 | 350 | 6.14 | 80 gal. | 242 | 9000 lb. | 17500 lb. | 26000 lb. | 30000 lb. | 22750 lb. | 3250 lb. |
| 3629 | 350 | 6.14 | 80 gal. | 242 | 9000 lb. | 17500 lb. | 26000 lb. | 30000 lb. | 22700 lb. | 3300 lb. |
| 3811 | 350 | 6.14 | 80 gal. | 254 | 9000 lb. | 17500 lb. | 26000 lb. | 30000 lb. | 22750 lb. | 3250 lb. |

The content in our literature depicts and describes products that are subject to change. For the most recent images and information, please visit NewmarCorp.com.

Lengths, heights, widths, and dry weights are approximate. Weight will vary based on optional equipment added to the above base weight.

GAWR: Gross Axle Weight Rating is the maximum permissible weight for an axle.

GVWR: Gross Vehicle Weight Rating is the maximum permissible weight for a fully loaded motor coach.

GCWR: Gross Combination Weight Rating is the value specified by the manufacturer of the vehicle as the maximum allowable loaded weight of this motor coach and any towed trailer or towed vehicle.

UVW: Unloaded Vehicle Weight is the weight of this motor coach as built at the factory with full fuel, engine oil, and coolants. Does not include cargo, fresh water, propane gas, or dealer-installed accessories.

NCC: Net Carrying Capacity is the maximum weight of all occupants, including the driver, personal belongings, food, fresh water, waste water, propane gas, tools, tongue weight of towed vehicle, dealer-installed accessories, etc., that can be carried by the motor coach.

Specifications supplied by the chassis manufacturer.

Bay Star R-Values:

Roof R-Value = 19

Sidewall R-Value = 11

Floor R-Value = 16

Basement R-Value = 4







FEATURES & OPTIONS

A dark, low-key photograph of an RV interior. The scene shows a living area with a sofa on the right, a dining table with chairs on the left, and a kitchen area in the background. A round clock is mounted on the wall. The lighting is dim, highlighting the textures of the upholstery and cabinetry.

FEATURES & OPTIONS

EXTERIOR FEATURES

Full-Paint Masterpiece Finish™ with Clearcoat Finish

Diamond Shield Protection on Front Cap

Automatic Step for Entrance Door

Convex Exterior Mirrors with Defrost and Remote Control

Rear Hitch for Towing Car

Assist Handle at Entrance Door

Undercoating

Mud Flaps

Smart Level Hydraulic Leveling Jacks with Bluetooth Compatible Touch Pad

OPTIONS

Rear Ladder

Flag Pole Bracket

CONSTRUCTION FEATURES

One-Piece Molded Fiberglass Roof

Gelcoated Fiberglass Exterior Sidewalls, Front and Rear Caps

Aluminum-Frame Sidewalls and Roof Construction, on 16" Center

5/8" Foam Insulation Laminated in Sidewalls and Ceiling

Automatic Mechanical Lock Arms on Slideout Rooms-Scissor Style

Polar Pak R19 Batten Insulation in Roof

OPTIONS

Egress Door with Ladder System*

Power Entrance Step Well Cover on 3811

Power Opening Entrance Door for Wheelchair Lift on 3811

WINDOWS, AWNINGS, & VENTS

One-Piece Tinted Windshield

Frameless Double Pane Tinted Safety-Glass Windows

Fan-Tastic® Vent with Rain Sensor in Kitchen and Bathroom

Skylight Above Shower

Carefree Travel'r Side Awning with Alumaguard and Strip Lighting

Rear Window in Bedroom*

Slideout Covers

OPTIONS

Bunk Windows

Screen Door Over Wheelchair Lift Area on 3811

CHASSIS FEATURES

Ford® F-53 Chassis with 7.3Ltr V-8 Engine, 24,000 lb. on 30' - 32' Floor Plan

Ford® F-53 Chassis with 7.3Ltr V-8 Engine, 26,000 lb. on 34' - 38' Floor Plan

Aluminum Wheels

Cruise Control

Tilt Steering Wheel

Anti-Lock Braking System

Electronic Stability Control

AIR CONDITIONING & HEATING

Two 13.5M Penguin™ Heat Pump A/C, 5.5 Onan Generator, 50 Amp Service and Energy Management System

Dash Heater and Air Conditioner

Propane Gas Furnace with Ducted Heat

Defrost Fans Built into Front Overhead

OPTIONS

Auxiliary Heater in Rear of Coach

ELECTRICAL FEATURES

5.5 kW Onan® Generator with Remote Switch and Automatic Changeover

10 Watt Solar Panel to Charge Chassis Battery

Two 12 Volt House Batteries

Battery Disconnect Switch for House Battery

12 Volt Auxiliary Receptacle on Dash

45 Amp Converter

Daytime Running Lights

Emergency Engine Start Switch

LED Ceiling Lights

LED Awning Strip Lighting

Lights in Exterior Storage Compartment

Lights in Wardrobe

Manually Operated Hold-To-Run Slideout Switch

Cable TV Connection

USB Outlet at Dash for Driver Use

USB Charger at Passenger Seat Area

Drain Lift Pump with 1200 Watt Inverter*

Dash Radio, Cameras and Monitors to Power-Up from both House Batteries and Ignition

Multiplex Lighting Control System

EXTERIOR FEATURES

Full-Paint Masterpiece Finish™ with Clearcoat Finish

Diamond Shield Protection on Front Cap

Automatic Step for Entrance Door

Convex Exterior Mirrors with Defrost and Remote Control

Rear Hitch for Towing Car

Assist Handle at Entrance Door

Undercoating

Mud Flaps

Smart Level Hydraulic Leveling Jacks with Bluetooth Compatible Touch Pad

OPTIONS

Rear Ladder

Flag Pole Bracket

CONSTRUCTION FEATURES

One-Piece Molded Fiberglass Roof

Gelcoated Fiberglass Exterior Sidewalls, Front and Rear Caps

Aluminum-Frame Sidewalls and Roof Construction, on 16" Center

5/8" Foam Insulation Laminated in Sidewalls and Ceiling

Automatic Mechanical Lock Arms on Slideout Rooms-Scissor Style

Polar Pak R19 Batten Insulation in Roof

OPTIONS

Egress Door with Ladder System*

Power Entrance Step Well Cover on 3811

Power Opening Entrance Door for Wheelchair Lift on 3811

WINDOWS, AWNINGS, & VENTS

One-Piece Tinted Windshield

Frameless Double Pane Tinted Safety-Glass Windows

Fan-Tastic® Vent with Rain Sensor in Kitchen and Bathroom

Skylight Above Shower

Carefree Travel'r Side Awning with Alumaguard and Strip Lighting

Rear Window in Bedroom*

Slideout Covers

OPTIONS

Bunk Windows

Screen Door Over Wheelchair Lift Area on 3811

CHASSIS FEATURES

Ford® F-53 Chassis with 7.3Ltr V-8 Engine, 24,000 lb. on 30' - 32' Floor Plan

Ford® F-53 Chassis with 7.3Ltr V-8 Engine, 26,000 lb. on 34'-38' Floor Plan

Aluminum Wheels

Cruise Control

Tilt Steering Wheel

Anti-Lock Braking System

Electronic Stability Control

AIR CONDITIONING & HEATING

Two 13.5M Penguin™ Heat Pump A/C, 5.5 Onan Generator, 50 Amp Service and Energy Management System

Dash Heater and Air Conditioner

Propane Gas Furnace with Ducted Heat

Defrost Fans Built into Front Overhead

OPTIONS

Auxiliary Heater in Rear of Coach

ELECTRICAL FEATURES

5.5 kW Onan® Generator with Remote Switch and Automatic Changeover

10 Watt Solar Panel to Charge Chassis Battery

Two 12 Volt House Batteries

Battery Disconnect Switch for House Battery

12 Volt Auxiliary Receptacle on Dash

45 Amp Converter

Daytime Running Lights

Emergency Engine Start Switch

LED Ceiling Lights

LED Awning Strip Lighting

Lights in Exterior Storage Compartment

Lights in Wardrobe

Manually Operated Hold-To-Run Slideout Switch

Cable TV Connection

USB Outlet at Dash for Driver Use

USB Charger at Passenger Seat Area

Drain Lift Pump with 1200 Watt Inverter*

Dash Radio, Cameras and Monitors to Power-Up from both House Batteries and Ignition

Multiplex Lighting Control System

Multiplex Monitor System 10.1 in Center of Coach with Interior Lighting and HVAC Controls

Two Wireless Phone Chargers in Cockpit

OPTIONS

1200 Watt Inverter Ran to TV's*

1200 Watt Pure Sine Inverter for Bedbase, Nightstand and Overhead Cabinet Recept

2000 Watt Pure Sine with CPAP Prep, Six 6-Volt Batteries

Power Rewind Reel with 33' Cord*

Solar Prep with Six Gauge Wire Ran from Roof to First Storage Compartment

PLUMBING & BATH FEATURES

Demand Water System

Sewage Holding-Tank Rinse

Water Heater Bypass System

Dometic® 310 China Bowl Stool

ABS Shower Surround with Shower Door

Exterior Shower Located on Off Door Side

Systems Monitor Panel

OPTIONS

Water Filter for Entire Unit

INTERIOR FEATURES

Padded Vinyl Ceiling Panels

Decorative Wall Art

Mini Blinds in Kitchen and Bathroom Windows

Vinyl Floor in Kitchen, Living Area and Bathroom

Carpeting on Slideout floors

Interior Assist Handle at Main Entrance Door

Non-Quilted Fitted Bedspread and Accent Pillow

Inlaid Six Panel Design Interior Passenger Doors

Auto Motion Manual Double Roller Shads on Windows Behind Driver and Passenger Area

Auto Motion Power Shade at Windshield and Manual Shades at Driver and Passenger Side Windows

Dash Panel Color Coordinated ABS

Integrated Window Blind System on Entry Door

Shoe Storage Located in Entrance Door Step Compartment

OPTIONS

Vinyl Plank Floor in Place of Vinyl Tile

CABINETS & FURNITURE

Calypso Glazed Maple Mitered Flat Designer Cabinet Doors-Matte Finish

6-Way Power for Driver Seat

Manual Footrest on Passenger Seat

Concealed Hinges on Cabinet Doors

Drawers Underneath Booth Dinette Seats

Drawers with Full Extension Ball Bearing Guides

Pull-Out Pantry Shelves*

Polished Solid Surface Countertop in Kitchen with Undermounted Stainless Steel Sink and Sink Covers

Solid Surface Countertops in Bathroom and Bedroom

Dinette Booth Williamsburg Sleeper

Williamsburg Sofa and Front Seats

Passenger Seat Tablet Holder

Lifts on Bed Top

Smooth Top Mattress

Mesh Cell Phone Holder at Each Bunk Bed*

Soft-Close Cabinet Drawers

Molded Silverware Divider Tray

Bed Base Lowered with Power Incline Head of Bed and Adjustable Support Mattress on 3811

OPTIONS

Amaretto Glazed Maple Mitered Flat Designer Cabinets-Matte Finish

Arctic "B" Glazed Maple Mitered Flat Designer Cabinets-Matte Finish

Drop Down Bunk Bed Over Driver/Passenger Seats, Extends to Windshield with Front Overhead Cabinet and Bunk Ladder

Folding Cockpit Table

Plush Pillow Top Mattress

Buffet Dinette

Dinette Combo Desk with Buffet Table, Two Fixed and Two Folding Chairs

Euro Booth Dinette with One Table Leaf

Two Ottomans*

Two Recliners with Reading Lights

Sofa Inclinor 74" Non-Sleeper

Sofa Inclinor 84" Non-Sleeper

Theater Seating 74" (Manual) with Reading Lights

Theater Seating 84" (Manual) with Reading Lights

Lowered (Fixed) Bed Base with Freestyle Glideaway Adj. Bed Mechanism with Air Mattress and Window on 3811

Bed Base Power Adj. Height with Freestyle Glideaway Bed Mech., Air Mattress and Window on 3811

Bed Base Full Height on 3811

Multiplex Monitor System 10.1 in Center of Coach with Interior Lighting and HVAC Controls

Two Wireless Phone Chargers in Cockpit

OPTIONS

1200 Watt Inverter Ran to TV's*

1200 Watt Pure Sine Inverter for Bedbase, Nightstand and Overhead Cabinet Receptcs

2000 Watt Pure Sine with CPAP Prep, Six 6-Volt Batteries

Power Rewind Reel with 33' Cord*

Solar Prep with Six Gauge Wire Ran from Roof to First Storage Compartment

PLUMBING & BATH FEATURES

Demand Water System

Sewage Holding-Tank Rinse

Water Heater Bypass System

Dometic® 310 China Bowl Stool

ABS Shower Surround with Shower Door

Exterior Shower Located on Off Door Side

Systems Monitor Panel

OPTIONS

Water Filter for Entire Unit

INTERIOR FEATURES

Padded Vinyl Ceiling Panels

Decorative Wall Art

Mini Blinds in Kitchen and Bathroom Windows

Vinyl Floor in Kitchen, Living Area and Bathroom

Carpeting on Slideout floors

Interior Assist Handle at Main Entrance Door

Non-Quilted Fitted Bedspread and Accent Pillow

Inlaid Six Panel Design Interior Passenger Doors

Auto Motion Manual Double Roller Shads on Windows Behind Driver and Passenger Area

Auto Motion Power Shade at Windshield and Manual Shades at Driver and Passenger Side Windows

Dash Panel Color Coordinated ABS

Integrated Window Blind System on Entry Door

Shoe Storage Located in Entrance Door Step Compartment

OPTIONS

Vinyl Plank Floor in Place of Vinyl Tile

CABINETS & FURNITURE

Calypso Glazed Maple Mitered Flat Designer Cabinet Doors-Matte Finish

6-Way Power for Driver Seat

Manual Footrest on Passenger Seat

Concealed Hinges on Cabinet Doors

Drawers Underneath Booth Dinette Seats

Drawers with Full Extension Ball Bearing Guides

Pull-Out Pantry Shelves*

Polished Solid Surface Countertop in Kitchen with Undermounted Stainless Steel Sink and Sink Covers

Solid Surface Countertops in Bathroom and Bedroom

Dinette Booth Williamsburg Sleeper

Williamsburg Sofa and Front Seats

Passenger Seat Tablet Holder

Lifts on Bed Top

Smooth Top Mattress

Mesh Cell Phone Holder at Each Bunk Bed*

Soft-Close Cabinet Drawers

Molded Silverware Divider Tray

Bed Base Lowered with Power Incline Head of Bed and Adjustable Support Mattress on 3811

OPTIONS

Amaretto Glazed Maple Mitered Flat Designer Cabinets-Matte Finish

Arctic "B" Glazed Maple Mitered Flat Designer Cabinets-Matte Finish

Drop Down Bunk Bed Over Driver/Passenger Seats, Extends to Windshield with Front Overhead Cabinet and Bunk Ladder

Folding Cockpit Table

Plush Pillow Top Mattress

Buffet Dinette

Dinette Combo Desk with Buffet Table, Two Fixed and Two Folding Chairs

Euro Booth Dinette with One Table Leaf

Two Ottomans*

Two Recliners with Reading Lights

Sofa Incliner 74" Non-Sleeper

Sofa Incliner 84" Non-Sleeper

Theater Seating 74" (Manual) with Reading Lights

Theater Seating 84" (Manual) with Reading Lights

Lowered (Fixed) Bed Base with Freestyle Glideaway Adj. Bed Mechanism with Air Mattress and Window on 3811

Bed Base Power Adj. Height with Freestyle Glideaway Bed Mech., Air Mattress and Window on 3811

Bed Base Full Height on 3811

APPLIANCES & ACCESSORIES

Convection Microwave 30" Stainless Steel with Three Burner Cooktop

Convection Microwave Below Cooktop on BSCA 3811

Norcold® 10 Cf. Refrigerator

Raised Panel Refer Door Insert

6 gal. Gas/Electric Water Heater with Electric Ignition

OPTIONS

Norcold® 12 Cf. 4-Door Refrigerator with Icemaker

Icemaker Added to Standard Norcold® Refrigerator

Icemaker Added to Standard Norcold® Refrigerator with Heated Water Line

110 Volt Heat Pads for Holding Tanks

30" Convection Stainless Steel Microwave in Kitchen Overhead with a Drawer Below Cooktop on 3811 Only

Fireplace in Living Area

Prep for Two-Piece Washer and Dryer

Splendide® Two-Piece Stacked Washer and Dryer

Truma Comfort Plus Continuous Hot Water Heater

Whirlpool® 11Cf. Refrigerator with Ice Maker, Inverter 2000W Pure Sine with CPAP Prep, and Six 6-Volt Batteries

Whirlpool® 11Cf. Refrigerator, Inverter 2000W Pure Sine with CPAP Prep, and Six 6-Volt Batteries

AUDIO, VIDEO & ACCESSORIES

Samsung® LED TV in Living and Bedroom Areas (TV sizes vary per Floor Plan)

Axxera Dash Radio with Apple CarPlay and Sirius® XM Ready, 10" Single Monitor

Dash Radio with Harman/JBL 180 Watt Sound System

High Definition Component Wiring

Rearview Colored Monitor System with Audio

Side-View Cameras Displayed onto Rear View Monitor Screen

Satellite Dish Prep on Roof

Winegard Digital Crank Up TV Antenna

10 Bc Fire Extinguisher, Smoke Detector, Propane and Carbon Monoxide Detector

TV Jack and 110 Volt Recept in Door Side Exterior Storage Compartment

OPTIONS

43" Samsung® TV on Televator with Fireplace in Place of Front Overhead TV on 3811 Only

Bose® Soundbar Sound System

Samsung® 32" LED TV in Front Overhead*

WiFi Ranger Denali/Spruce LTE

WiFi System Everest with Aspen Interior Router

Winegard Automatic Dome Satellite Dish-Std/HD, DIRECTV Std. and Bell Canada

Winegard Automatic Open Face Satellite Dish-HD and Bell HD TV

Winegard Automatic Open Face SWM Satellite Dish-DIRECTV Std/HD

Winegard In-Motion Dome Satellite Dish-Std/HD, DIRECTV Std/HD and DIRECTV Std, and Bell Canada

Winegard Rayzar Automatic Digital TV Antenna

Exterior Entertainment Center in Sidewall with Samsung® 32" LED TV, AM/FM Radio and Speakers*

APPLIANCES & ACCESSORIES

| |
|--|
| Convection Microwave 30" Stainless Steel with Three Burner Cooktop |
| Convection Microwave Below Cooktop on BSCA 3811 |
| Norcold® 10 Cf. Refrigerator |
| Raised Panel Refer Door Insert |
| 6 gal. Gas/Electric Water Heater with Electric Ignition |

OPTIONS

| |
|---|
| Norcold® 12 Cf. 4-Door Refrigerator with Ice maker |
| Ice maker Added to Standard Norcold® Refrigerator |
| Ice maker Added to Standard Norcold® Refrigerator with Heated Water Line |
| 110 Volt Heat Pads for Holding Tanks |
| 30" Convection Stainless Steel Microwave in Kitchen Overhead with a Drawer Below Cooktop on 3811 Only |
| Fireplace in Living Area |
| Prep for Two-Piece Washer and Dryer |
| Splendide® Two-Piece Stacked Washer and Dryer |
| Truma Comfort Plus Continuous Hot Water Heater |
| Whirlpool® 11Cf. Refrigerator with Ice Maker, Inverter 2000W Pure Sine with CPAP Prep, and Six 6-Volt Batteries |
| Whirlpool® 11Cf. Refrigerator, Inverter 2000W Pure Sine with CPAP Prep, and Six 6-Volt Batteries |

AUDIO, VIDEO & ACCESSORIES

| |
|---|
| Samsung® LED TV in Living and Bedroom Areas (TV sizes vary per Floor Plan) |
| Axxera Dash Radio with Apple CarPlay and Sirius® XM Ready, 10" Single Monitor |
| Dash Radio with Harman/JBL 180 Watt Sound System |
| High Definition Component Wiring |
| Rearview Colored Monitor System with Audio |
| Side-View Cameras Displayed onto Rear View Monitor Screen |
| Satellite Dish Prep on Roof |
| Winegard Digital Crank Up TV Antenna |
| 10 Bc Fire Extinguisher, Smoke Detector, Propane and Carbon Monoxide Detector |
| TV Jack and 110 Volt Recept in Door Side Exterior Storage Compartment |

OPTIONS

| |
|--|
| 43" Samsung® TV on Televator with Fireplace in Place of Front Overhead TV on 3811 Only |
| Bose® Soundbar Sound System |
| Samsung® 32" LED TV in Front Overhead* |
| WiFi Ranger Denali/Spruce LTE |
| WiFi System Everest with Aspen Interior Router |
| Winegard Automatic Dome Satellite Dish-Std/HD, DIRECTV Std. and Bell Canada |
| Winegard Automatic Open Face Satellite Dish-HD and Bell HD TV |
| Winegard Automatic Open Face SWM Satellite Dish-DIRECTV Std/HD |
| Winegard In-Motion Dome Satellite Dish-Std/HD, DIRECTV Std/HD and DIRECTV Std, and Bell Canada |
| Winegard Rayzar Automatic Digital TV Antenna |
| Exterior Entertainment Center in Sidewall with Samsung® 32" LED TV, AM/FM Radio and Speakers* |

*CHECK WITH DEALERSHIP ON FLOOR PLAN AVAILABILITY







A. ROOF

Fiberglass Roof
 Batten Insulation
 A/C Ducting
 16" on Center Aluminum Rafter Framing
 Kraft Paper Vapor Barrier
 5/8" Bead Foam
 3/16" Panel
 Padded Vinyl Overlay

B. SIDEWALL

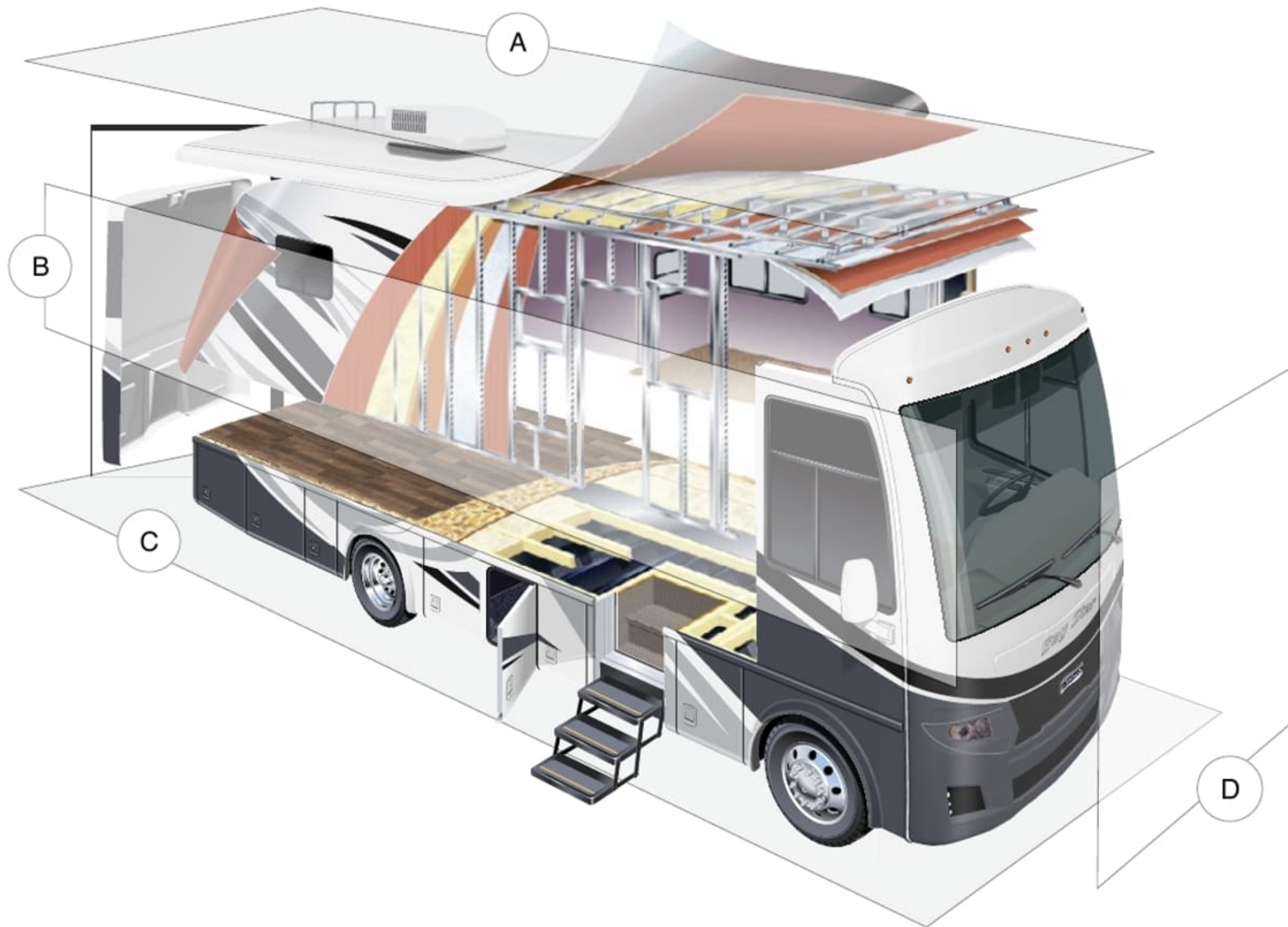
Interior Wall Panel
 5/8" Bead Foam
 Kraft Paper Vapor Barrier
 Batten Insulation
 Composite One-Piece
 Gelcoat Exterior Sidewall
 Aluminum Framing

C. FLOOR

Carpet/Tile
 Carpet Padding
 5/8" Floor Decking
 Batten Insulation
 16" on Center Wood Framing
 Polyethylene Moisture Barrier

D. EXTERIOR

15M Penguin™ Heat Pump Central
 Air Conditioner
 One-Piece Bonded Windshield
 Coated Aluminum Wheels
 Frameless, Double-Pane,
 Tinted Safety Glass Windows
 Side-Hinged Baggage Doors with
 Optional Pull-Out Tray



A. ROOF

Fiberglass Roof
 Batten Insulation
 A/C Ducting
 16" on Center Aluminum Rafter Framing
 Kraft Paper Vapor Barrier
 5/8" Bead Foam
 3/16" Panel
 Padded Vinyl Overlay

B. SIDEWALL

Interior Wall Panel
 5/8" Bead Foam
 Kraft Paper Vapor Barrier
 Batten Insulation
 Composite One-Piece
 Gelcoat Exterior Sidewall
 Aluminum Framing

C. FLOOR

Carpet/Tile
 Carpet Padding
 5/8" Floor Decking
 Batten Insulation
 16" on Center Wood Framing
 Polyethylene Moisture Barrier

D. EXTERIOR

15M Penguin™ Heat Pump Central
 Air Conditioner
 One-Piece Bonded Windshield
 Coated Aluminum Wheels
 Frameless, Double-Pane,
 Tinted Safety Glass Windows
 Side-Hinged Baggage Doors with
 Optional Pull-Out Tray

THE NEWMAR CUSTOMER EXPERIENCE

The Newmar difference goes beyond our industry-leading motor coaches to provide you with an unrivaled ownership experience.



QUALITY FROM THE START

Every Newmar is crafted one at a time by folks who have spent an average of eight years building them. And each coach we assemble must undergo more than 1,000 tests and checks before ever leaving our factory.



CAREFULLY SELECTED DEALERS

We view our dealership network in terms of quality, not quantity. Each of our dealers acts as a partner in our shared mission to exceed your highest of expectations, for an ownership experience that's second to none from day one.



EVERYTHING IN ONE PLACE

As a Newmar owner, you'll find resources specific to your coach through Newgle, an easy-to-use knowledge base that houses everything from user guides to technical support documents.



FRIENDS FOR LIFE

Meet fellow owners through the Newmar Kountry Klub, a top social club for RV travelers that hosts rallies and other special events throughout the U.S. and Canada.



SEAMLESS SERVICE

When you join the Newmar family, we pair you with a dedicated service specialist with expert knowledge of your exact coach. Our service specialists guarantee dealer warranty authorizations within four business hours and ship all in-stock parts the same day, free of charge.



ROCK-SOLID PROTECTION

All models include a one-year/unlimited mileage limited warranty and a five-year, non-transferable structural warranty that covers your coach's superstructure in the event it fails to perform. Ask your Newmar dealer for more details.

THE NEWMAR CUSTOMER EXPERIENCE

The Newmar difference goes beyond our industry-leading motor coaches to provide you with an unrivaled ownership experience.



QUALITY FROM THE START

Every Newmar is crafted one at a time by folks who have spent an average of eight years building them. And each coach we assemble must undergo more than 1,000 tests and checks before ever leaving our factory.



CAREFULLY SELECTED DEALERS

We view our dealership network in terms of quality, not quantity. Each of our dealers acts as a partner in our shared mission to exceed your highest of expectations, for an ownership experience that's second to none from day one.



EVERYTHING IN ONE PLACE

As a Newmar owner, you'll find resources specific to your coach through Newgle, an easy-to-use knowledge base that houses everything from user guides to technical support documents.



FRIENDS FOR LIFE

Meet fellow owners through the Newmar Kountry Klub, a top social club for RV travelers that hosts rallies and other special events throughout the U.S. and Canada.



SEAMLESS SERVICE

When you join the Newmar family, we pair you with a dedicated service specialist with expert knowledge of your exact coach. Our service specialists guarantee dealer warranty authorizations within four business hours and ship all in-stock parts the same day, free of charge.



ROCK-SOLID PROTECTION

All models include a one-year/unlimited mileage limited warranty and a five-year, non-transferable structural warranty that covers your coach's superstructure in the event it fails to perform. Ask your Newmar dealer for more details.

OUR PARTNERS

Newmar Quality Begins with the Company We Keep

You deserve class-leading performance from names you can trust. That's why we only work with suppliers dedicated to providing our customers with unrivaled quality, comfort, and support.



We create chemistry

BASF

The Coatings division of BASF is a global expert in the development and production of innovative and sustainable OEM and refinish coatings that deliver solutions beyond your imagination.



INDUSTRIAL FINISHES

Industrial Finishes has supported RV manufacturers for over four decades. The Industrial Finishes paint process delivers uncompromising quality, providing your coach with a true "Masterpiece" finish.



Driven By You

FREIGHTLINER CUSTOM CHASSIS

Freightliner® Custom Chassis Corp. (FCCC) is renowned for delivering the industry's best ownership experience through exceptional 24/7 factory-direct support, exceptional ride and handling, and developing high-performance innovations such as DRIVETECH. It's the only RV driving system that prioritizes safety and automotive luxury by putting every command at your fingertips.



RIVERPARK

At RiverPark, we proudly represent the leading brands in consumer electronics—brands you know and trust to provide exceptional quality and innovative technology. Newmar features Samsung's incredible 4K TVs, Xite Infotainment systems featuring Nav-N-Go Navigation, Bose® soundbars, and JBL and Infinity premium audio. Step into a 2023 Newmar and experience dazzling audio and video performance throughout the coach.



RV CHASSIS

SPARTAN MOTORS

Spartan® Motors is an American company with over 30 years of experience designing and manufacturing the premier motorhome chassis, which provides superior performance, exceptional safety ratings, and industry-leading technology.

OUR PARTNERS

Newmar Quality Begins with the Company We Keep

You deserve class-leading performance from names you can trust. That's why we only work with suppliers dedicated to providing our customers with unrivaled quality, comfort, and support.



We create chemistry

BASF

The Coatings division of BASF is a global expert in the development and production of innovative and sustainable OEM and refinish coatings that deliver solutions beyond your imagination.



INDUSTRIAL FINISHES

Industrial Finishes has supported RV manufacturers for over four decades. The Industrial Finishes paint process delivers uncompromising quality, providing your coach with a true "Masterpiece" finish.



Driven By You

FREIGHTLINER CUSTOM CHASSIS

Freightliner® Custom Chassis Corp. (FCCC) is renowned for delivering the industry's best ownership experience through exceptional 24/7 factory-direct support, exceptional ride and handling, and developing high-performance innovations such as DRIVETECH. It's the only RV driving system that prioritizes safety and automotive luxury by putting every command at your fingertips.



RIVERPARK

At RiverPark, we proudly represent the leading brands in consumer electronics—brands you know and trust to provide exceptional quality and innovative technology. Newmar features Samsung's incredible 4K TVs, Xite Infotainment systems featuring Nav-N-Go Navigation, Bose® soundbars, and JBL and Infinity premium audio. Step into a 2023 Newmar and experience dazzling audio and video performance throughout the coach.



RV CHASSIS

SPARTAN MOTORS

Spartan® Motors is an American company with over 30 years of experience designing and manufacturing the premier motorhome chassis, which provides superior performance, exceptional safety ratings, and industry-leading technology.



WHEN YOU KNOW THE DIFFERENCESM



WHEN YOU KNOW THE DIFFERENCESM