



20  
23

LUXURY MOTORCOACH

# MOUNTAIN AIRE





20  
23

LUXURY MOTORCOACH

# MOUNTAIN AIRE





MOUNTAIN  
AIRE

## YOUR PRIVATE MOUNTAIN CHALET.

Take the next step up into luxurious travel with the Mountain Aire, designed for discerning motorhome owners. This coach comes stacked with standard features and is offered in six unique floor plans.





MOUNTAIN  
AIRE

## YOUR PRIVATE MOUNTAIN CHALET.

Take the next step up into luxurious travel with the Mountain Aire, designed for discerning motorhome owners. This coach comes stacked with standard features and is offered in six unique floor plans.





# Spartan® K3 Tag Axle Chassis

Cummins X12 Diesel Engine // 500 HP // 1695 lb./ft. torque  
Linley Full-Paint Masterpiece Finish™ Exterior



41'–45' // 6 floor plans





# Spartan® K3 Tag Axle Chassis

Cummins X12 Diesel Engine // 500 HP // 1695 lb./ft. torque  
Linley Full-Paint Masterpiece Finish™ Exterior



41'–45' // 6 floor plans





# COCKPIT

## **Heated Driver and Passenger Seats**

Power Lumbar, Recline, and Footrest  
Passenger Seat Workstation

## **Industry-First Comfort Drive™ Adaptive Steering with Passive Steer Technology**

## **OnGuard™ Collision Mitigation Adaptive Cruise System with Adjustable Following Distance Control**

## **Mobileye® Lane Tracking and Lane Departure System**

## **Digital Glare-Free Dash**

### **Xite Dash Radio**

Apple CarPlay  
10" Dual Monitor  
Nav-N-Go Navigation System  
HD 360 Camera System with  
Predictive Grid Lines and Tri-View Rear Camera

## **Passenger-Side Monitor** (Optional)

## **Wireless Charger Mats**





# COCKPIT

## **Heated Driver and Passenger Seats**

Power Lumbar, Recline, and Footrest  
Passenger Seat Workstation

## **Industry-First Comfort Drive™ Adaptive Steering with Passive Steer Technology**

## **OnGuard™ Collision Mitigation Adaptive Cruise System with Adjustable Following Distance Control**

## **Mobileye® Lane Tracking and Lane Departure System**

## **Digital Glare-Free Dash**

### **Xite Dash Radio**

Apple CarPlay  
10" Dual Monitor  
Nav-N-Go Navigation System  
HD 360 Camera System with  
Predictive Grid Lines and Tri-View Rear Camera

## **Passenger-Side Monitor** (Optional)

## **Wireless Charger Mats**













# CABIN

**Four Décor Options:  
Haven\*, Linley\*, Avalon, and Beckford**

**Ranger Denali LTE System with Spruce Router**

**10" Silverleaf® System to Control  
Elements of the Coach**

My Rozie Internet Connection

\*New for 2023



# CABIN

**Four Décor Options:  
Haven\*, Linley\*, Avalon, and Beckford**

**Ranger Denali LTE System with Spruce Router**

**10" Silverleaf® System to Control  
Elements of the Coach**

My Rozie Internet Connection

\*New for 2023





*Floor plan 4591 with Linley décor  
and Bermuda cabinets*







*Floor plan 4591 with Linley décor  
and Bermuda cabinets*







# CABIN

**Three 15M Penguin™ Heat Pump  
Central Air Conditioners and Remote**

**Electric Radiant Heat  
Beneath Main Floor Tile**

**Samsung® 4K LED TV on  
Televisor and Front Overhead**

Bose® 500 Subwoofer

Bose® 900 Sound Touch Soundbar





# CABIN

**Three 15M Penguin™ Heat Pump  
Central Air Conditioners and Remote**

**Electric Radiant Heat  
Beneath Main Floor Tile**

**Samsung® 4K LED TV on  
Televator and Front Overhead**

Bose® 500 Subwoofer

Bose® 900 Sound Touch Soundbar













# GALLEY

**Whirlpool® 19.7 Cu. Ft. Refrigerator**

**30" Convection Stainless Microwave**

**Recessed Three Burner Cooktop**

**All Electric Recessed Mount**

**Induction Cooktop** (Optional)

Available with 8 AGM Batteries or Lithium Ion 640 AHR Battery System

**Stainless Front Dishwasher in Drawer** (Optional)

**Glazed Maple Hardwood Cabinets**

Available in Four Matte or High Gloss Finish Color Options

Soft-close Cabinet Doors

Undermounted LED Lights

**Super Polished Solid Surface Countertops**

**Kitchen Window** (Optional)





# GALLEY

**Whirlpool® 19.7 Cu. Ft. Refrigerator**

**30" Convection Stainless Microwave**

**Recessed Three Burner Cooktop**

**All Electric Recessed Mount**

**Induction Cooktop** (Optional)

Available with 8 AGM Batteries or Lithium Ion 640 AHR Battery System

**Stainless Front Dishwasher in Drawer** (Optional)

**Glazed Maple Hardwood Cabinets**

Available in Four Matte or High Gloss Finish Color Options

Soft-close Cabinet Doors

Undermounted LED Lights

**Super Polished Solid Surface Countertops**

**Kitchen Window** (Optional)













# DINETTE

**Door-Side Euro Booth Dinette\***

**Buffet Dinette (Optional)\*\***

Three Configurations Available

\*Floor plan 4521

\*\*Additional dinette configurations available





# DINETTE

**Door-Side Euro Booth Dinette\***

**Buffet Dinette (Optional)\*\***

Three Configurations Available

\*Floor plan 4521

\*\*Additional dinette configurations available













# MASTER BEDROOM

**Redesigned Dresser Cabinets,  
TV, and Window Area**

**Wardrobe with Safe**

**King Bed with Pillow Top Mattress**

Adjustable Support Air Bed (Optional)

**Samsung® LED TV**





# MASTER BEDROOM

**Redesigned Dresser Cabinets,  
TV, and Window Area**

**Wardrobe with Safe**

**King Bed with Pillow Top Mattress**

Adjustable Support Air Bed (Optional)

**Samsung® LED TV**













# BATHROOM

**Walk-Through Mid-Ship Bath\***

**40" x 32" Residential Shower\*\***

**Aqua Miser® Shower System**

**Dual Sink Vanity¹**

**Linen Storage**

**Splendide® Two-Piece Stacked Washer and Dryer**

**Chinook Dual Loop Heat with Continuous Hot Water**

**Super Polished Solid Surface Countertop**

**Cathedral Ceiling for Added Height**

(Rear Bath Floor Plans)

**Crown Molding**

(Rear Bath Floor Plans)

\*Floor plan 4586

\*\*Floor plan 4118

¹Vanity varies by floor plan

Shower size varies by floor plan





# BATHROOM

**Walk-Through Mid-Ship Bath\***

**40" x 32" Residential Shower\*\***

**Aqua Miser® Shower System**

**Dual Sink Vanity¹**

**Linen Storage**

**Splendide® Two-Piece Stacked Washer and Dryer**

**Chinook Dual Loop Heat with Continuous Hot Water**

**Super Polished Solid Surface Countertop**

**Cathedral Ceiling for Added Height**

(Rear Bath Floor Plans)

**Crown Molding**

(Rear Bath Floor Plans)

\*Floor plan 4586

\*\*Floor plan 4118

¹Vanity varies by floor plan

Shower size varies by floor plan













# EXTERIOR

**Lighted Front Grill Newmar Badge**

**Industry-Exclusive Full-Paint Masterpiece Finish™  
with Cut and Buff**

**Four Graphic Design and Color Options**

**Industry-Exclusive STAR Foundation**

**Lithium Ion Battery System** (Optional)

Two Lithionics 320 AHR Battery Packs  
Surge Guard Transfer Switch

**Silverstar Ultra Headlight Bulbs**





# EXTERIOR

**Lighted Front Grill Newmar Badge**

**Industry-Exclusive Full-Paint Masterpiece Finish™  
with Cut and Buff**

**Four Graphic Design and Color Options**

**Industry-Exclusive STAR Foundation**

**Lithium Ion Battery System** (Optional)

Two Lithionics 320 AHR Battery Packs  
Surge Guard Transfer Switch

**Silverstar Ultra Headlight Bulbs**













# EXTERIOR

**Basement Storage with Easy-Close Doors**

**Dometic® 3.0 Cu. Ft. Freezer on Pull-Out Tray**

**Exterior Entertainment Center** (Optional)

Samsung® 43" 4K LED TV

Bose® Soundbar

**12.5 kW Cummins Onan® Diesel Generator**

**10w Solar Panel** (to charge chassis battery)





# EXTERIOR

**Basement Storage with Easy-Close Doors**

**Dometic® 3.0 Cu. Ft. Freezer on Pull-Out Tray**

**Exterior Entertainment Center** (Optional)

Samsung® 43" 4K LED TV

Bose® Soundbar

**12.5 kW Cummins Onan® Diesel Generator**

**10w Solar Panel** (to charge chassis battery)













INTERIOR/EXTERIOR  
DESIGN OPTIONS





INTERIOR/EXTERIOR  
DESIGN OPTIONS



# Avalon



Awning Color: Charcoal Tweed

**AVALON INTERIOR** a. Furniture/Fabric b. Flooring c. Counter Top



**CABINET FINISHES**



\*Exterior colors and interior décor options can be matched to customer preference.

\*Available in High Gloss or Matte Finish





# Avalon



Awning Color: Charcoal Tweed

## AVALON INTERIOR a. Furniture/Fabric b. Flooring c. Counter Top



## CABINET FINISHES



\*Exterior colors and interior décor options can be matched to customer preference.

\*Available in High Gloss or Matte Finish







# Beckford



Awning Color: Charcoal Tweed

## BECKFORD INTERIOR a. Furniture/Fabric b. Flooring c. Counter Top



## CABINET FINISHES



\*Exterior colors and interior décor options can be matched to customer preference.

\*Available in High Gloss or Matte Finish





# Beckford



Awning Color: Charcoal Tweed

## BECKFORD INTERIOR a. Furniture/Fabric b. Flooring c. Counter Top



## CABINET FINISHES



\*Exterior colors and interior décor options can be matched to customer preference.

\*Available in High Gloss or Matte Finish



# Haven



Awning Color: Linen Tweed



**HAVEN INTERIOR** a. Furniture/Fabric b. Flooring c. Counter Top



**CABINET FINISHES**



\*Exterior colors and interior décor options can be matched to customer preference.

\*Available in High Gloss or Matte Finish



# Haven



Awning Color: Linen Tweed

## HAVEN INTERIOR

a. Furniture/Fabric   b. Flooring   c. Counter Top



## CABINET FINISHES



\*Exterior colors and interior décor options can be matched to customer preference.

\*Available in High Gloss or Matte Finish







# Linley



Awning Color: Charcoal Tweed

### LINLEY INTERIOR a. Furniture/Fabric b. Flooring c. Counter Top



### CABINET FINISHES



\*Exterior colors and interior décor options can be matched to customer preference.

\*Available in High Gloss or Matte Finish





# Linley



Awning Color: Charcoal Tweed

**LINLEY INTERIOR** a. Furniture/Fabric b. Flooring c. Counter Top



**CABINET FINISHES**



\*Exterior colors and interior décor options can be matched to customer preference.

\*Available in High Gloss or Matte Finish













# FLOOR PLANS & SPECIFICATIONS





# FLOOR PLANS & SPECIFICATIONS





Length: 41' 10"



**4118**

|                     |         |              |            |
|---------------------|---------|--------------|------------|
| Length              | 41' 10" | Grey Tank    | 80 gal.    |
| Width               | 101.5"  | Sewage Tank  | 60 gal.    |
| App. Overall Height | 13' 02" | Water Tank   | 105 gal.   |
| Interior Width      | 95.5"   | Propane Tank | 22 gal.    |
| Interior Height     | 83"     | Furnace      | 50,000 btu |

Length: 44' 10"



**4521**

|                     |         |              |            |
|---------------------|---------|--------------|------------|
| Length              | 44' 10" | Grey Tank    | 80 gal.    |
| Width               | 101.5"  | Sewage Tank  | 60 gal.    |
| App. Overall Height | 13' 02" | Water Tank   | 105 gal.   |
| Interior Width      | 95.5"   | Propane Tank | 22 gal.    |
| Interior Height     | 83"     | Furnace      | 50,000 btu |

Length: 44' 10"



**4535**

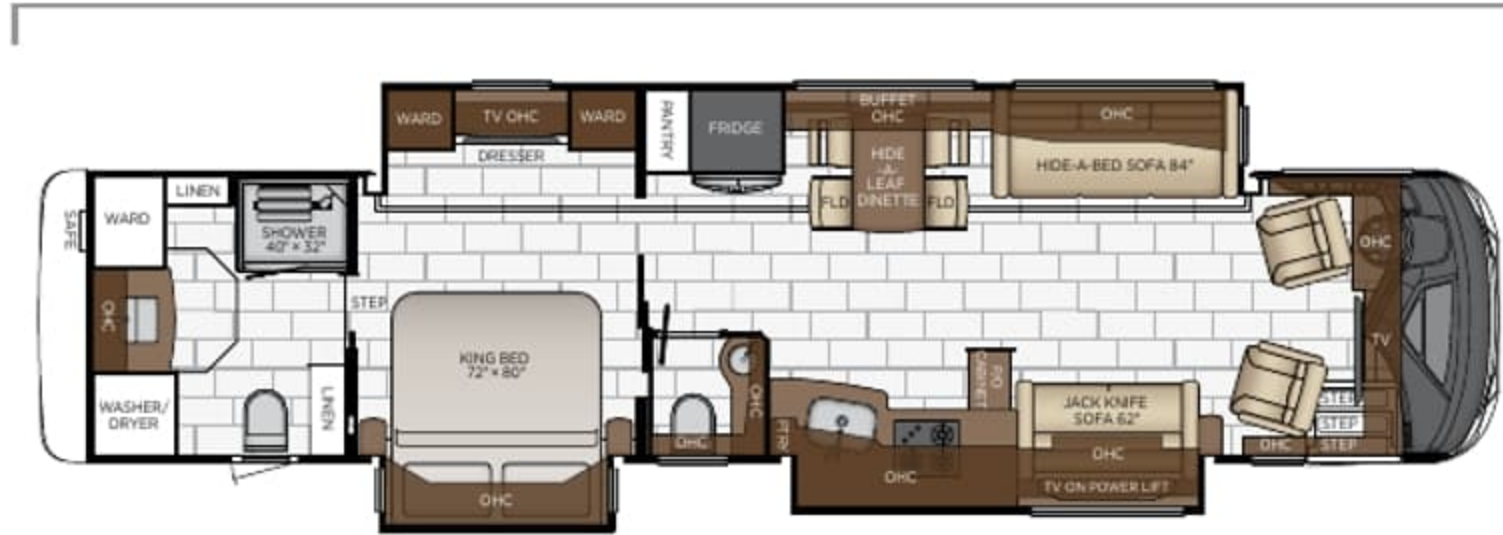
|                     |         |              |            |
|---------------------|---------|--------------|------------|
| Length              | 44' 10" | Grey Tank    | 80 gal.    |
| Width               | 101.5"  | Sewage Tank  | 60 gal.    |
| App. Overall Height | 13' 02" | Water Tank   | 105 gal.   |
| Interior Width      | 95.5"   | Propane Tank | 22 gal.    |
| Interior Height     | 83"     | Furnace      | 50,000 btu |

★new floor plan





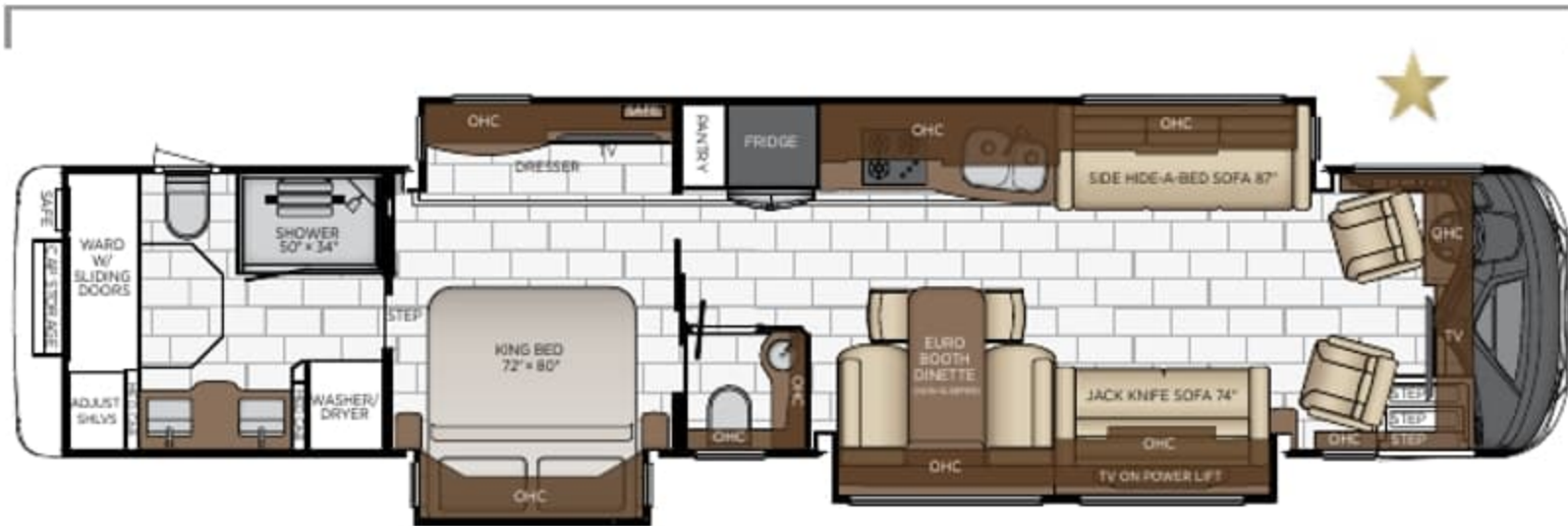
Length: 41' 10"



**4118**

|                     |         |              |            |
|---------------------|---------|--------------|------------|
| Length              | 41' 10" | Grey Tank    | 80 gal.    |
| Width               | 101.5"  | Sewage Tank  | 60 gal.    |
| App. Overall Height | 13' 02" | Water Tank   | 105 gal.   |
| Interior Width      | 95.5"   | Propane Tank | 22 gal.    |
| Interior Height     | 83"     | Furnace      | 50,000 btu |

Length: 44' 10"



**4521**

|                     |         |              |            |
|---------------------|---------|--------------|------------|
| Length              | 44' 10" | Grey Tank    | 80 gal.    |
| Width               | 101.5"  | Sewage Tank  | 60 gal.    |
| App. Overall Height | 13' 02" | Water Tank   | 105 gal.   |
| Interior Width      | 95.5"   | Propane Tank | 22 gal.    |
| Interior Height     | 83"     | Furnace      | 50,000 btu |

Length: 44' 10"



**4535**

|                     |         |              |            |
|---------------------|---------|--------------|------------|
| Length              | 44' 10" | Grey Tank    | 80 gal.    |
| Width               | 101.5"  | Sewage Tank  | 60 gal.    |
| App. Overall Height | 13' 02" | Water Tank   | 105 gal.   |
| Interior Width      | 95.5"   | Propane Tank | 22 gal.    |
| Interior Height     | 83"     | Furnace      | 50,000 btu |

★new floor plan





Length: 44' 10"



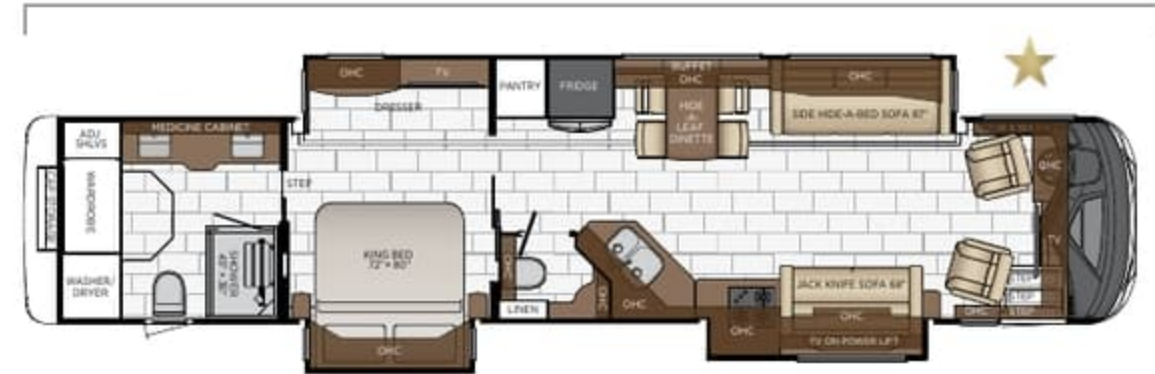
|             |                     |         |              |            |
|-------------|---------------------|---------|--------------|------------|
| <b>4551</b> | Length              | 44' 10" | Grey Tank    | 80 gal.    |
|             | Width               | 101.5"  | Sewage Tank  | 60 gal.    |
|             | App. Overall Height | 13' 02" | Water Tank   | 105 gal.   |
|             | Interior Width      | 95.5"   | Propane Tank | 22 gal.    |
|             | Interior Height     | 83"     | Furnace      | 50,000 btu |

Length: 44' 10"



|             |                     |         |              |            |
|-------------|---------------------|---------|--------------|------------|
| <b>4586</b> | Length              | 44' 10" | Grey Tank    | 80 gal.    |
|             | Width               | 101.5"  | Sewage Tank  | 60 gal.    |
|             | App. Overall Height | 13' 02" | Water Tank   | 105 gal.   |
|             | Interior Width      | 95.5"   | Propane Tank | 22 gal.    |
|             | Interior Height     | 83"     | Furnace      | 50,000 btu |

Length: 44' 10"



|             |                     |         |              |            |
|-------------|---------------------|---------|--------------|------------|
| <b>4591</b> | Length              | 44' 10" | Grey Tank    | 80 gal.    |
|             | Width               | 101.5"  | Sewage Tank  | 60 gal.    |
|             | App. Overall Height | 13' 02" | Water Tank   | 105 gal.   |
|             | Interior Width      | 95.5"   | Propane Tank | 22 gal.    |
|             | Interior Height     | 83"     | Furnace      | 50,000 btu |

★ - new floor plan



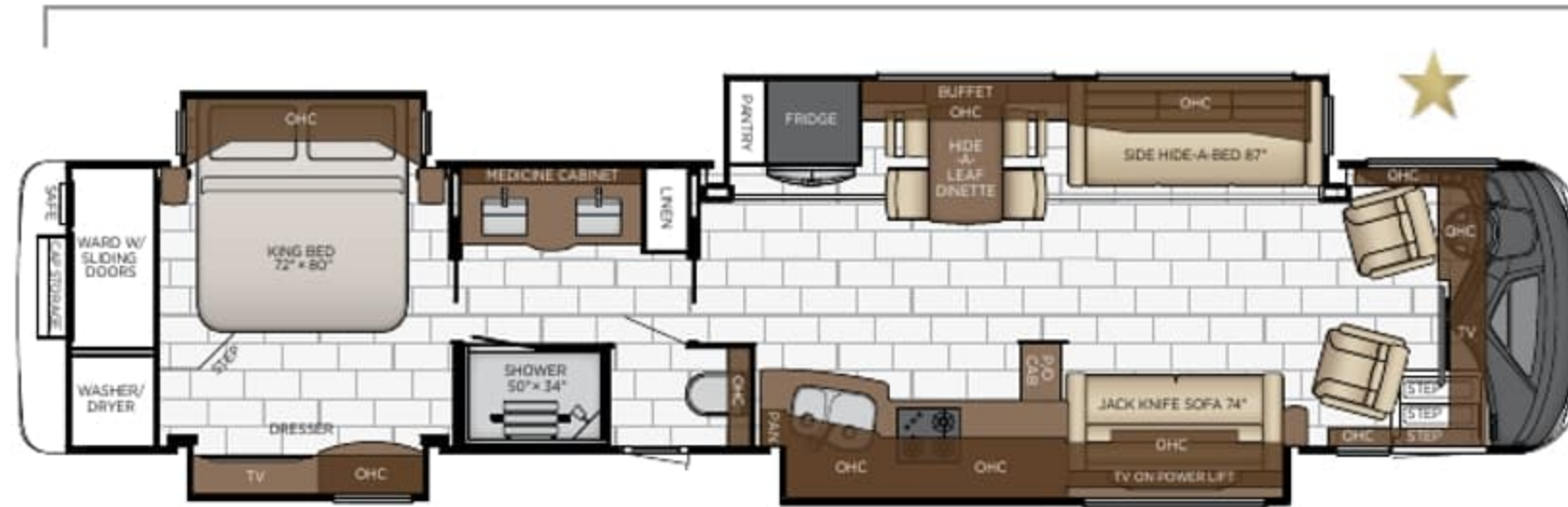


Length: 44' 10"



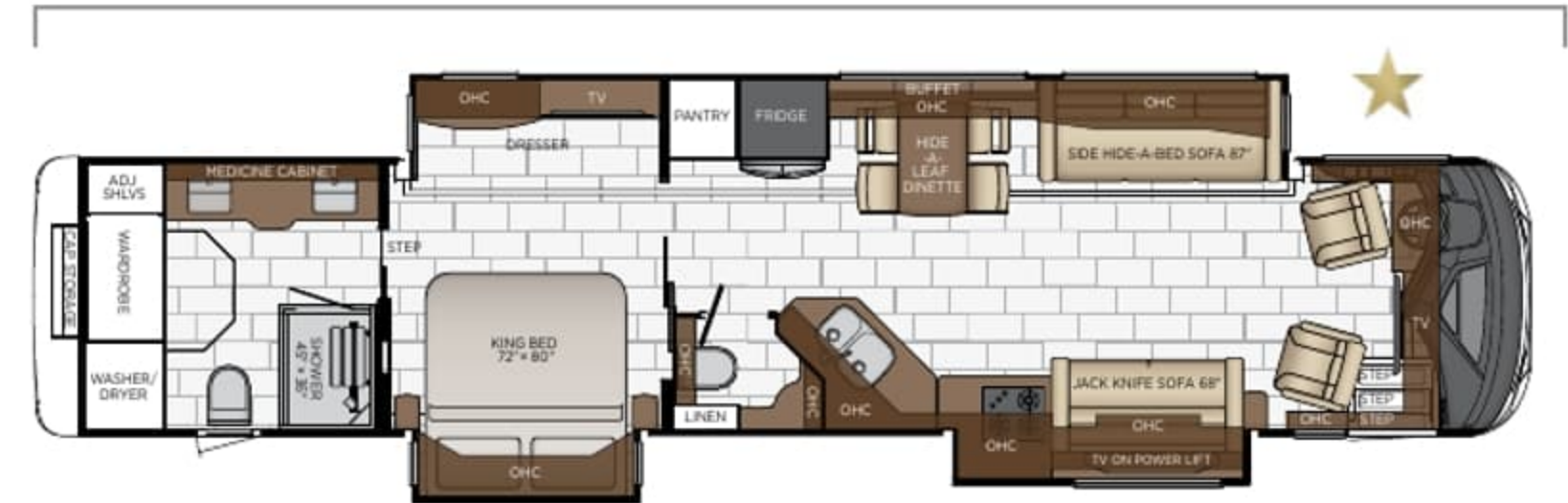
|             |                     |         |              |            |
|-------------|---------------------|---------|--------------|------------|
| <b>4551</b> | Length              | 44' 10" | Grey Tank    | 80 gal.    |
|             | Width               | 101.5"  | Sewage Tank  | 60 gal.    |
|             | App. Overall Height | 13' 02" | Water Tank   | 105 gal.   |
|             | Interior Width      | 95.5"   | Propane Tank | 22 gal.    |
|             | Interior Height     | 83"     | Furnace      | 50,000 btu |

Length: 44' 10"



|             |                     |         |              |            |
|-------------|---------------------|---------|--------------|------------|
| <b>4586</b> | Length              | 44' 10" | Grey Tank    | 80 gal.    |
|             | Width               | 101.5"  | Sewage Tank  | 60 gal.    |
|             | App. Overall Height | 13' 02" | Water Tank   | 105 gal.   |
|             | Interior Width      | 95.5"   | Propane Tank | 22 gal.    |
|             | Interior Height     | 83"     | Furnace      | 50,000 btu |

Length: 44' 10"



|             |                     |         |              |            |
|-------------|---------------------|---------|--------------|------------|
| <b>4591</b> | Length              | 44' 10" | Grey Tank    | 80 gal.    |
|             | Width               | 101.5"  | Sewage Tank  | 60 gal.    |
|             | App. Overall Height | 13' 02" | Water Tank   | 105 gal.   |
|             | Interior Width      | 95.5"   | Propane Tank | 22 gal.    |
|             | Interior Height     | 83"     | Furnace      | 50,000 btu |

★ - new floor plan



# QUALITY YOU CAN FEEL

Like a fine home, the 2023 Mountain Aire is framed 16 inches on center, and is covered by a fiberglass roof with an integrated gutter rail.



| SPARTAN    |           |            |           |            |            |           |           |           |           |           |           |
|------------|-----------|------------|-----------|------------|------------|-----------|-----------|-----------|-----------|-----------|-----------|
| FLOOR PLAN | ENGINE HP | AXLE RATIO | FUEL CAP. | WHEEL BASE | FRONT GAWR | REAR GAWR | TAG GAWR  | GVWR      | GCWR      | APP. UVW  | APP. NCC  |
| 4118       | 500       | 4.3        | 150       | 258+TAG    | 20000 lb.  | 20000 lb. | 14000 lb. | 54000 lb. | 69000 lb. | 42500 lb. | 11500 lb. |
| 4521       | 500       | 4.3        | 150       | 294+TAG    | 20000 lb.  | 20000 lb. | 14000 lb. | 54000 lb. | 69000 lb. | 45000 lb. | 9000 lb.  |
| 4535       | 500       | 4.3        | 150       | 294+TAG    | 20000 lb.  | 20000 lb. | 14000 lb. | 54000 lb. | 69000 lb. | 44400 lb. | 9600 lb.  |
| 4551       | 500       | 4.3        | 150       | 294+TAG    | 20000 lb.  | 20000 lb. | 14000 lb. | 54000 lb. | 69000 lb. | 44200 lb. | 9800 lb.  |
| 4586       | 500       | 4.3        | 150       | 294+TAG    | 20000 lb.  | 20000 lb. | 14000 lb. | 54000 lb. | 69000 lb. | 44100 lb. | 9900 lb.  |
| 4591       | 500       | 4.3        | 150       | 294+TAG    | 20000 lb.  | 20000 lb. | 14000 lb. | 54000 lb. | 69000 lb. | 44200 lb. | 9800 lb.  |

**The content in our literature depicts and describes products that are subject to change. For the most recent images and information, please visit [NewmarCorp.com](http://NewmarCorp.com).**

Lengths, heights, widths, and dry weights are approximate. Weight will vary based on optional equipment added to the above base weight.

**GAWR:** Gross Axle Weight Rating is the maximum permissible weight for an axle.

**GVWR:** Gross Vehicle Weight Rating is the maximum permissible weight for a fully loaded motor coach.

**GCWR:** Gross Combination Weight Rating is the value specified by the manufacturer of the vehicle as the maximum allowable loaded weight of this motor coach and any towed trailer or towed vehicle.

**UVW:** Unloaded Vehicle Weight is the weight of this motor coach as built at the factory with full fuel, engine oil, and coolants. Does not include cargo, fresh water, propane gas, or dealer-installed accessories.

**NCC:** Net Carrying Capacity is the maximum weight of all occupants, including the driver, personal belongings, food, fresh water, waste water, propane gas, tools, tongue weight of towed vehicle, dealer-installed accessories, etc., that can be carried by the motor coach.

**Specifications supplied by the chassis manufacturer.**

**Mountain Aire R-Values:**

Roof R-Value = 24

Sidewall R-Value = 11

Floor R-Value = 16

Basement R-Value = 16



## QUALITY YOU CAN FEEL

Like a fine home, the 2023 Mountain Aire is framed 16 inches on center, and is covered by a fiberglass roof with an integrated gutter rail.



| SPARTAN    |           |            |           |            |            |           |           |           |           |           |           |
|------------|-----------|------------|-----------|------------|------------|-----------|-----------|-----------|-----------|-----------|-----------|
| FLOOR PLAN | ENGINE HP | AXLE RATIO | FUEL CAP. | WHEEL BASE | FRONT GAWR | REAR GAWR | TAG GAWR  | GVWR      | GCWR      | APP. UVW  | APP. NCC  |
| 4118       | 500       | 4.3        | 150       | 258+TAG    | 20000 lb.  | 20000 lb. | 14000 lb. | 54000 lb. | 69000 lb. | 42500 lb. | 11500 lb. |
| 4521       | 500       | 4.3        | 150       | 294+TAG    | 20000 lb.  | 20000 lb. | 14000 lb. | 54000 lb. | 69000 lb. | 45000 lb. | 9000 lb.  |
| 4535       | 500       | 4.3        | 150       | 294+TAG    | 20000 lb.  | 20000 lb. | 14000 lb. | 54000 lb. | 69000 lb. | 44400 lb. | 9600 lb.  |
| 4551       | 500       | 4.3        | 150       | 294+TAG    | 20000 lb.  | 20000 lb. | 14000 lb. | 54000 lb. | 69000 lb. | 44200 lb. | 9800 lb.  |
| 4586       | 500       | 4.3        | 150       | 294+TAG    | 20000 lb.  | 20000 lb. | 14000 lb. | 54000 lb. | 69000 lb. | 44100 lb. | 9900 lb.  |
| 4591       | 500       | 4.3        | 150       | 294+TAG    | 20000 lb.  | 20000 lb. | 14000 lb. | 54000 lb. | 69000 lb. | 44200 lb. | 9800 lb.  |

The content in our literature depicts and describes products that are subject to change. For the most recent images and information, please visit [NewmarCorp.com](http://NewmarCorp.com).

Lengths, heights, widths, and dry weights are approximate. Weight will vary based on optional equipment added to the above base weight.

**GAWR:** Gross Axle Weight Rating is the maximum permissible weight for an axle.

**GVWR:** Gross Vehicle Weight Rating is the maximum permissible weight for a fully loaded motor coach.

**GCWR:** Gross Combination Weight Rating is the value specified by the manufacturer of the vehicle as the maximum allowable loaded weight of this motor coach and any towed trailer or towed vehicle.

**UVW:** Unloaded Vehicle Weight is the weight of this motor coach as built at the factory with full fuel, engine oil, and coolants. Does not include cargo, fresh water, propane gas, or dealer-installed accessories.

**NCC:** Net Carrying Capacity is the maximum weight of all occupants, including the driver, personal belongings, food, fresh water, waste water, propane gas, tools, tongue weight of towed vehicle, dealer-installed accessories, etc., that can be carried by the motor coach.

**Specifications supplied by the chassis manufacturer.**

**Mountain Aire R-Values:**

Roof R-Value = 24

Sidewall R-Value = 11

Floor R-Value = 16

Basement R-Value = 16





# FEATURES & OPTIONS







# FEATURES & OPTIONS







## EXTERIOR FEATURES

|   |
|---|
| Full-Paint Masterpiece Finish™ with Cut and Buff with Beta Fusion Protection on Front Cap |
| Lighted Newmar Badge in Front Grill   |
| Convex Exterior Mirrors with Remote Control, Defrost, Turn Signals and Side View Cameras  |
| Chrome Power Baggage Door Locks, Keyless Entrance Door with Touch Pad and Door Bell       |
| Entrance Door with Automatic Step   |
| Rear Hitch for Towing Car   |
| Assist Handle at Entrance Door  |
| Mud Flaps   |
| Rear Protective Tow Guard with Stainless Steel Newmar Name Cutout                         |
| Undercoating  |
| Hydraulic Leveling Jacks  |
| Stainless Steel Exterior Trim Pieces and Entrance Door Kick Panel                         |
| Magnetic Switches in Baggage Doors Instead of Plunger                                     |
| Storage Bins in Pegboard Compartment  |

### OPTIONS

|   |
|---|
| Stainless Steel Trim Kit for Exterior Compartment Doors |
| Flag Pole Bracket                                       |
| Storage Tray 26 X 90 Power Location-Bay 2               |
| Storage Tray 26 X 91 Non-Power, Location Bay 2          |
| Storage Tray 40 X 90 Power, Location-Bay 2              |
| Storage Tray 40 X 90 Power, Location-Bay 3              |
| Storage Tray 42 X 91 Non-Power, Location-Bay 2          |
| Storage Tray 42 X 91 Non-Power, Location-Bay 3          |
| Storage Tray 43 X 56 Non-Power, Location-Bay 3          |
| Storage Tray 43 X 56 Non-Power, Location-Bay 4          |

## CONSTRUCTION FEATURES

|   |
|---|
| Fiberglass Roof and Integrated Gutter Rail                                  |
| Gelcoated Fiberglass Exterior Sidewalls, Front and Rear Caps                |
| Aluminum-Frame Sidewalls and Roof Construction, 16" on Center               |
| 5/8" Foam Insulation Laminated in Sidewalls and Ceiling                     |
| Polar Pak R19 Batten Insulation on Roof                                     |
| Automatic Mechanical Lock Arms on Non Hydraulic Slideout Rooms-Paddle Style |
| Egress Door with Ladder System  |
| New Basement Storage Door Seals   |

## WINDOWS, AWNINGS, & VENTS

|  |
|--|
| Frameless Double-Pane Tinted Safety-Glass Windows  |
| Fan-Tastic® Vent with Rain Sensor in Kitchen, Bathroom and Enclosed Stool Room                 |
| Hardwood Louvered Cover on Fan-Tastic® Vent in Kitchen   |
| Skylight Above Shower*   |
| Girard® Package-Two Nova Side Awnings, Slideout Covers, Entrance Door and Power Window Awnings |
| One Piece Tinted Windshield  |
| Driver Side Power Window   |
| Large Non-Ventilated Living Room and Dinette Windows   |

### OPTIONS

|                |
|----------------|
| Bunk Windows   |
| Kitchen Window |

## CHASSIS FEATURES

|   |
|---|
| Spartan® K3 Tag Axle 500 Hp   |
| Air Leveling System   |
| Aluminum Wheels   |
| Electronic Chassis Information Center in Dash   |
| Electronic Stability Control  |
| Cruise Control  |
| Comfort Drive™ Steering with Power Column and Adjustable Control  |
| Steering Wheel Nine Function Switch Pod in Center on Spartan® Chassis   |
| Recessed Fuel Fills with Crossover to Fill from Either Side   |
| Back-Up Alarm   |
| Anti-Lock Braking System  |
| Chassis Battery Disconnect  |
| Automatic Headlights ON/OFF   |
| Push Button Engine Start  |
| OnGuard™ Collision Mitigation Adaptive Cruise System with Adj. Following Distance Control on Spartan® Chassis |
| Tire Pressure Monitoring on Tag Axle Chassis  |
| Mobileye® Lane Tracking and Lane Departure Warning System   |
| Valid Digital Glare Free Dash on Spartan® Chassis   |
| Radio Controls and Headlight/Marker Light Flash on Steering Wheel   |
| 20K IFS Steer Axle with Shorter Wheel Cut on Spartan® Chassis   |

### OPTIONS

|  |
|--|
| Curt Spectrum Integrated Brake Control on Spartan® Chassis |
|--|



## EXTERIOR FEATURES

Full-Paint Masterpiece Finish™ with Cut and Buff with Beta Fusion Protection on Front Cap

Lighted Newmar Badge in Front Grill

Convex Exterior Mirrors with Remote Control, Defrost, Turn Signals and Side View Cameras

Chrome Power Baggage Door Locks, Keyless Entrance Door with Touch Pad and Door Bell

Entrance Door with Automatic Step

Rear Hitch for Towing Car

Assist Handle at Entrance Door

Mud Flaps

Rear Protective Tow Guard with Stainless Steel Newmar Name Cutout

Undercoating

Hydraulic Leveling Jacks

Stainless Steel Exterior Trim Pieces and Entrance Door Kick Panel

Magnetic Switches in Baggage Doors Instead of Plunger

Storage Bins in Pegboard Compartment

### OPTIONS

Stainless Steel Trim Kit for Exterior Compartment Doors

Flag Pole Bracket

Storage Tray 26 X 90 Power Location-Bay 2

Storage Tray 26 X 91 Non-Power, Location Bay 2

Storage Tray 40 X 90 Power, Location-Bay 2

Storage Tray 40 X 90 Power, Location-Bay 3

Storage Tray 42 X 91 Non-Power, Location-Bay 2

Storage Tray 42 X 91 Non-Power, Location-Bay 3

Storage Tray 43 X 56 Non-Power, Location-Bay 3

Storage Tray 43 X 56 Non-Power, Location-Bay 4

## CONSTRUCTION FEATURES

Fiberglass Roof and Integrated Gutter Rail

Gelcoated Fiberglass Exterior Sidewalls, Front and Rear Caps

Aluminum-Frame Sidewalls and Roof Construction, 16" on Center

5/8" Foam Insulation Laminated in Sidewalls and Ceiling

Polar Pak R19 Batten Insulation on Roof

Automatic Mechanical Lock Arms on Non Hydraulic Slideout Rooms-Paddle Style

Egress Door with Ladder System

New Basement Storage Door Seals

## WINDOWS, AWNINGS, & VENTS

Frameless Double-Pane Tinted Safety-Glass Windows

Fan-Tastic® Vent with Rain Sensor in Kitchen, Bathroom and Enclosed Stool Room

Hardwood Louvered Cover on Fan-Tastic® Vent in Kitchen

Skylight Above Shower\*

Girard® Package-Two Nova Side Awnings, Slideout Covers, Entrance Door and Power Window Awnings

One Piece Tinted Windshield

Driver Side Power Window

Large Non-Ventilated Living Room and Dinette Windows

### OPTIONS

Bunk Windows

Kitchen Window

## CHASSIS FEATURES

Spartan® K3 Tag Axle 500 Hp

Air Leveling System

Aluminum Wheels

Electronic Chassis Information Center in Dash

Electronic Stability Control

Cruise Control

Comfort Drive™ Steering with Power Column and Adjustable Control

Steering Wheel Nine Function Switch Pod in Center on Spartan® Chassis

Recessed Fuel Fills with Crossover to Fill from Either Side

Back-Up Alarm

Anti-Lock Braking System

Chassis Battery Disconnect

Automatic Headlights ON/OFF

Push Button Engine Start

OnGuard™ Collision Mitigation Adaptive Cruise System with Adj. Following Distance Control on Spartan® Chassis

Tire Pressure Monitoring on Tag Axle Chassis

Mobileye® Lane Tracking and Lane Departure Warning System

Valid Digital Glare Free Dash on Spartan® Chassis

Radio Controls and Headlight/Marker Light Flash on Steering Wheel

20K IFS Steer Axle with Shorter Wheel Cut on Spartan® Chassis

### OPTIONS

Curt Spectrum Integrated Brake Control on Spartan® Chassis







## AIR CONDITIONING & HEATING

- Three 15M Penguin™ Heat Pump Central Air Conditioners with Remote Control Thermostat
- Chinook Dual Loop Heat with Continuous Hot Water
- Dash Heater and Air Conditioner
- Driver and Passenger Dash Overhead Ventilation System
- Wall Mounted Sensors for Heating and Air Conditioning
- Roof Air Conditioning Drainage System
- Electric Radiant Heat Installed Below Main Floor Tile

## ELECTRICAL FEATURES

- 12.5 kW Cummins Onan® Diesel Generator
- 50 Amp Electrical Service with Flexible Cord with Automatic Transfer Switch
- Six 6-Volt House Batteries
- Battery Disconnect Switch for House Battery
- 10 Watt Solar Panel to Charge Chassis Battery
- 3000 Watt True Sine Inverter
- 12 Volt Auxiliary Receptacle on Dashboard
- Emergency Engine Start Switch
- Engine Block Heater
- Energy Management System
- Exterior Security Lights
- Midship Side Turn Signals
- LED Lights Recessed in Ceiling and Underneath Overhead Cabinets
- Accent Lights in Feature Ceiling, Slideout Fascia Trim and Lambrequins
- LED Lighting in Pull Out Pantry, Kitchen and Bathroom Base Cabinets
- LED Lights in Exterior Storage Compartments on Automatic Switches
- LED Lights Installed Under Door Side Slideouts
- Lights in Wardrobes
- Manually Operated Hold-To-Run Slideout Switch
- Automatic Generator Start on Low Battery or Temperature Setting
- Generator Start/Stop Function on Touchscreen in Water Bay Compartment
- Cable TV Connection
- Interior Courtesy Lights
- USB Outlet at Dinette and Bedroom Night Stand
- USB Outlet at Dash for Driver Use
- Power Rewind Wheel with 50' Cord\*
- Recessed Docking Lights

- KIB Touch Screen Interior Light and Shade Controls
- Secondary Multiple Touch Screen in Bedroom
- Silverleaf® Multiplex Electrical Wiring System
- Expanded Lighting Control Functionality on Silverleaf® System
- Rozie Remote Internet Connection for Silverleaf Multiplex System
- System Control App to Control Numerous Features from Personal Device
- Solar Prep with Six Gauge Wire from Roof to House Battery Compartment
- Spare Fuses in Chassis and House Fuse Panels
- Wireless Phone Charger Pad in Driver Area
- Wireless Charging Mat Built into Passenger Console
- 110 Volt Recept in Bed Overhead with Two Pass-Through Ports
- 110 Volt/USB Outlet at Head of Each Bunk\*
- Dimmable with Adjustable Aim Reading Lights at Head of Bed
- Transfer Switch with Surge Protector
- Dash Radio, Cameras and Monitors to Power-up from both House Batteries and Ignition

### OPTIONS

- LED Strip Lighting Installed Under Off Door Side Slideouts
- Four Flexible 110 Watt Solar Panels on Roof

## PLUMBING & BATH FEATURES

- Demand Water System
- Sewage Holding-Tank Rinse
- Dometic® 321 China Bowl Stool or Macerator Stool\*
- Aqua Miser® Shower System
- Tiled Shower Walls with Glass Door
- Soap Dispenser in Shower
- Fold-Down Shower Seat
- Water Filter for Entire Unit
- Exterior Shower
- Auto Fill for Fresh Water Tank
- Power Water Hose Reel
- Hot Water Line to Generator Area\*
- Grey Holding Tank Rinse
- Bladder Tank for Water Pump System

### OPTIONS

- Assist Handle in Shower
- RV Sanicon Turbo System





## AIR CONDITIONING & HEATING

- Three 15M Penguin™ Heat Pump Central Air Conditioners with Remote Control Thermostat
- Chinook Dual Loop Heat with Continuous Hot Water
- Dash Heater and Air Conditioner
- Driver and Passenger Dash Overhead Ventilation System
- Wall Mounted Sensors for Heating and Air Conditioning
- Roof Air Conditioning Drainage System
- Electric Radiant Heat Installed Below Main Floor Tile

## ELECTRICAL FEATURES

- 12.5 kW Cummins Onan® Diesel Generator
- 50 Amp Electrical Service with Flexible Cord with Automatic Transfer Switch
- Six 6-Volt House Batteries
- Battery Disconnect Switch for House Battery
- 10 Watt Solar Panel to Charge Chassis Battery
- 3000 Watt True Sine Inverter
- 12 Volt Auxiliary Receptacle on Dashboard
- Emergency Engine Start Switch
- Engine Block Heater
- Energy Management System
- Exterior Security Lights
- Midship Side Turn Signals
- LED Lights Recessed in Ceiling and Underneath Overhead Cabinets
- Accent Lights in Feature Ceiling, Slideout Fascia Trim and Lambrequins
- LED Lighting in Pull Out Pantry, Kitchen and Bathroom Base Cabinets
- LED Lights in Exterior Storage Compartments on Automatic Switches
- LED Lights Installed Under Door Side Slideouts
- Lights in Wardrobes
- Manually Operated Hold-To-Run Slideout Switch
- Automatic Generator Start on Low Battery or Temperature Setting
- Generator Start/Stop Function on Touchscreen in Water Bay Compartment
- Cable TV Connection
- Interior Courtesy Lights
- USB Outlet at Dinette and Bedroom Night Stand
- USB Outlet at Dash for Driver Use
- Power Rewind Wheel with 50' Cord\*
- Recessed Docking Lights

- KIB Touch Screen Interior Light and Shade Controls
- Secondary Multiple Touch Screen in Bedroom
- Silverleaf® Multiplex Electrical Wiring System
- Expanded Lighting Control Functionality on Silverleaf® System
- Rozie Remote Internet Connection for Silverleaf Multiplex System
- System Control App to Control Numerous Features from Personal Device
- Solar Prep with Six Gauge Wire from Roof to House Battery Compartment
- Spare Fuses in Chassis and House Fuse Panels
- Wireless Phone Charger Pad in Driver Area
- Wireless Charging Mat Built into Passenger Console
- 110 Volt Recept in Bed Overhead with Two Pass-Through Ports
- 110 Volt/USB Outlet at Head of Each Bunk\*
- Dimmable with Adjustable Aim Reading Lights at Head of Bed
- Transfer Switch with Surge Protector
- Dash Radio, Cameras and Monitors to Power-up from both House Batteries and Ignition

### OPTIONS

- LED Strip Lighting Installed Under Off Door Side Slideouts
- Four Flexible 110 Watt Solar Panels on Roof

## PLUMBING & BATH FEATURES

- Demand Water System
- Sewage Holding-Tank Rinse
- Dometic® 321 China Bowl Stool or Macerator Stool\*
- Aqua Miser® Shower System
- Tiled Shower Walls with Glass Door
- Soap Dispenser in Shower
- Fold-Down Shower Seat
- Water Filter for Entire Unit
- Exterior Shower
- Auto Fill for Fresh Water Tank
- Power Water Hose Reel
- Hot Water Line to Generator Area\*
- Grey Holding Tank Rinse
- Bladder Tank for Water Pump System

### OPTIONS

- Assist Handle in Shower
- RV Sanicon Turbo System





## INTERIOR FEATURES

|  |
|--|
| Designer Feature Ceiling and Cathedral Ceiling with Added Height on Rear Bath Floor Plans* |
| Tile Floor in Kitchen, Bathroom, Bedroom and Living Area                                   |
| Auto Motion Power Shades and Lambrequins   |
| Auto Motion Power Shades for Windshield and Driver/Passenger Side Windows                  |
| Hardwood Window Sills  |
| Hardwood Raised Panel Interior Passage Doors   |
| Flush Handles on Swinging Bath Doors   |
| Interior Assist Handle at Main Entry Door  |
| Fitted Non-Quilted Bedspread with Accent Pillows   |
| Safe Located in Bedroom Wardrobe   |
| Wastebasket in Kitchen Base Under Sink   |
| Maximized Shoe Storage Shelves Recessed in Rear of Wardrobe                                |
| New Paper Towel Holder for Exterior Water Compartment                                      |
| Finished Cover Over KIB Lighting Control Box   |

## CABINETS & FURNITURE

|  |
|--|
| Bermuda Glazed Maple Hardwood Cabinets with Raised Panel Doors with Matte Finish                           |
| Concealed Hinges on Cabinet Doors  |
| Super Polished Solid Surface Countertop in Kitchen with Under Mounted Stainless Steel Sink and Sink Covers |
| Super Polished Solid Surface Countertop in Bathroom and Bedroom  |
| Cooktop Cover Flush, Matching Countertop Material  |
| Lifts on Bed Top   |
| Passenger Seat Work Station  |
| Pull-Out Pantry Shelves*   |
| Push-to-Release Drawer Slides in Pantry  |
| Soft Close Cabinet Doors*  |
| Pantry with Space for Serving Trays/Bakeware   |
| Drawers with Dove Tail Sides with Self Closing Full Extension Ball Bearing Guides                          |
| Villa Ultra Leather Sofa and Driver/Passenger Seats with Integrated Seat Belts                             |
| Driver Seat with Vibrator for Haptic Feedback  |
| Driver and Passenger Seats Heated with Power-Lumbar, Recline, Footrest and Standard Width Passenger Seat   |
| Plush Pillow Top Mattress  |
| Extended Rotation Concealed Hinge for Washer/Dryer Cabinet Door  |
| Side Folding Hide-A-Bed Sofa with Memory Foam Mattress*  |

|  |
|--|
| Full Height Wardrobes Beside Lav*                                |
| Mesh Cell Phone Holder at Each Bunk Bed*                         |
| Molded Silverware Divider Tray                                   |
| Dinette Euro Booth with Two Table Leaves and Two Folding Chairs* |
| Redesigned Bedroom Dresser Center Cabinetry and Window Area      |
| Space for Serving Trays/Bakeware in Pantry                       |

## OPTIONS

|  |
|--|
| Glacier Glazed Maple Hardwood Cabinets with Raised Panel Doors with High Gloss or Matte Finish |
| Bermuda Glazed Maple Hardwood Cabinets with Raised Panel Doors-High Gloss                      |
| Driftwood Glazed Maple Hardwood Cabinets with Raised Panel Doors-High Gloss or Matte Finish    |
| Sable Maple Hardwood Cabinets with Raised Panel Doors-High Gloss or Matte Finish               |
| Adjustable Support Air Bed   |
| Power Extenda Flex Dinette   |
| Combination Desk/Dinette with Buffet Table, Two Fixed/Two Folding Chairs                       |
| Dinette Convertible with Two Fixed/Two Folding Chairs that Face Window*                        |
| Euro Booth Dinette with Two Table Leaves and Two Folding Chairs                                |
| Euro Booth/Hide-A-Bed Combo 162" with Two Table Leaves and Two Folding Chairs                  |
| Two Recliners with Lampstand and Reading Lights  |
| Two Ottomans*  |
| Passenger Seat Queen Size  |
| Powered Theater Seating 84"  |
| Powered Theater Seating 87"  |

## APPLIANCES & ACCESSORIES

|   |
|---|
| Stainless Steel 30" Convection Microwave with Recessed Three Burner Gas Cooktop |
| Air Horns   |
| Whirlpool® 19.7 Refrigerator  |
| Splendide® Two-Piece Stacked Washer/Dryer                                       |
| Dometic® 3.0 Cf Freezer on Pull-Out Tray in Exterior Baggage Compartment        |
| Storage Shelf Above Freezer   |
| Central Vacuum with Tool Kit  |

## OPTIONS

|  |
|--|
| All Electric Recessed Mount Induction Cooktop and 8 AGM Batteries  |
| All Electric Recessed Mount Induction Cooktop, Lithium Ion 640 AHR Battery System with Two 3000W Inverters |
| Dishwasher in Drawer with Stainless Steel Front  |



## INTERIOR FEATURES

Designer Feature Ceiling and Cathedral Ceiling with Added Height on Rear Bath Floor Plans\*

Tile Floor in Kitchen, Bathroom, Bedroom and Living Area

Auto Motion Power Shades and Lambrequins

Auto Motion Power Shades for Windshield and Driver/Passenger Side Windows

Hardwood Window Sills

Hardwood Raised Panel Interior Passage Doors

Flush Handles on Swinging Bath Doors

Interior Assist Handle at Main Entry Door

Fitted Non-Quilted Bedspread with Accent Pillows

Safe Located in Bedroom Wardrobe

Wastebasket in Kitchen Base Under Sink

Maximized Shoe Storage Shelves Recessed in Rear of Wardrobe

New Paper Towel Holder for Exterior Water Compartment

Finished Cover Over KIB Lighting Control Box

## CABINETS & FURNITURE

Bermuda Glazed Maple Hardwood Cabinets with Raised Panel Doors with Matte Finish

Concealed Hinges on Cabinet Doors

Super Polished Solid Surface Countertop in Kitchen with Under Mounted Stainless Steel Sink and Sink Covers

Super Polished Solid Surface Countertop in Bathroom and Bedroom

Cooktop Cover Flush, Matching Countertop Material

Lifts on Bed Top

Passenger Seat Work Station

Pull-Out Pantry Shelves\*

Push-to-Release Drawer Slides in Pantry

Soft Close Cabinet Doors\*

Pantry with Space for Serving Trays/Bakeware

Drawers with Dove Tail Sides with Self Closing Full Extension Ball Bearing Guides

Villa Ultra Leather Sofa and Driver/Passenger Seats with Integrated Seat Belts

Driver Seat with Vibrator for Haptic Feedback

Driver and Passenger Seats Heated with Power-Lumbar, Recline, Footrest and Standard Width Passenger Seat

Plush Pillow Top Mattress

Extended Rotation Concealed Hinge for Washer/Dryer Cabinet Door

Side Folding Hide-A-Bed Sofa with Memory Foam Mattress\*

Full Height Wardrobes Beside Lav\*

Mesh Cell Phone Holder at Each Bunk Bed\*

Molded Silverware Divider Tray

Dinette Euro Booth with Two Table Leaves and Two Folding Chairs\*

Redesigned Bedroom Dresser Center Cabinetry and Window Area

Space for Serving Trays/Bakeware in Pantry

## OPTIONS

Glacier Glazed Maple Hardwood Cabinets with Raised Panel Doors with High Gloss or Matte Finish

Bermuda Glazed Maple Hardwood Cabinets with Raised Panel Doors-High Gloss

Driftwood Glazed Maple Hardwood Cabinets with Raised Panel Doors-High Gloss or Matte Finish

Sable Maple Hardwood Cabinets with Raised Panel Doors-High Gloss or Matte Finish

Adjustable Support Air Bed

Power Extenda Flex Dinette

Combination Desk/Dinette with Buffet Table, Two Fixed/Two Folding Chairs

Dinette Convertible with Two Fixed/Two Folding Chairs that Face Window\*

Euro Booth Dinette with Two Table Leaves and Two Folding Chairs

Euro Booth/Hide-A-Bed Combo 162" with Two Table Leaves and Two Folding Chairs

Two Recliners with Lampstand and Reading Lights

Two Ottomans\*

Passenger Seat Queen Size

Powered Theater Seating 84"

Powered Theater Seating 87"

## APPLIANCES & ACCESSORIES

Stainless Steel 30" Convection Microwave with Recessed Three Burner Gas Cooktop

Air Horns

Whirlpool® 19.7 Refrigerator

Splendide® Two-Piece Stacked Washer/Dryer

Dometic® 3.0 Cf Freezer on Pull-Out Tray in Exterior Baggage Compartment

Storage Shelf Above Freezer

Central Vacuum with Tool Kit

## OPTIONS

All Electric Recessed Mount Induction Cooktop and 8 AGM Batteries

All Electric Recessed Mount Induction Cooktop, Lithium Ion 640 AHR Battery System with Two 3000W Inverters

Dishwasher in Drawer with Stainless Steel Front







**AUDIO, VIDEO & ACCESSORIES**

- Samsung® LED TV in Living and Bedroom Areas\* (TV Sizes Vary Per Floor Plan)
- Samsung® 43" 4K LED TV in Front Overhead
- Samsung® 50" 4K LED TV on Televator in Living Area\*
- Bose® 500 Subwoofer
- Bose® 900 Sound Touch Soundbar in Livingroom
- Xite Dash Radio with Apple CarPlay, 10" Dual Monitor with Nav-N-Go Navigation
- Xite HD 360 Camera System with Predictive Grid Lines and Tri-View Rear Camera
- Rearview Color Monitor System
- Winegard Rayzar Automatic Digital TV Antenna
- Satellite Dish Prep on Roof
- Two Bedroom Radio Speakers
- TV Jack and 110 Volt Recept in Door Side Exterior Storage Compartment
- Cat 6 TV Cables
- Infrared Repeater System to Operate Audio/Visual Components
- WiFi Ranger Denali/Spruce LTE
- 10 Bc Fire Extinguisher, Smoke Detector, Propane and Carbon Monoxide Detector
- Harmony Universal Remote

**OPTIONS**

- Radio Sirius® XM Capability with Antenna (Does not include monthly subscription)
- Exterior Entertainment Center in Sidewall with Samsung 43" 4K LED TV and Soundbar
- Exterior Entertainment Center in Storage Compartment with Samsung 43" 4K LED TV and Bose® Soundbar
- WiFi System Everest with Aspen Interior Router
- Winegard Automatic Open Face Satellite Dish-For Dish HD and Bell HD TV
- Winegard Automatic Open Face SWM Satellite Dish-for DIRECTV Std/HD and In-Motion DIRECTV Std, Dish Std/HD
- Winegard Automatic Open Face SWM Satellite Dish-for DIRECTV Std/HD
- Winegard Automatic Open Face Satellite Dish and Winegard In-Motion for Dish Network
- Winegard In-Motion Dome Satellite Dish-for Dish Std/HD, DIRECTV Std. and Bell Canada
- Two-19" Skyworth TV/DVD Monitors at each Bunk\*
- Extra Monitor on Passenger Side
- Rear Camera (2) Prep for Use with Stacker Trailer
- Universal Toll Module

\*CHECK WITH DEALERSHIP ON FLOOR PLAN AVAILABILITY







**AUDIO, VIDEO & ACCESSORIES**

- Samsung® LED TV in Living and Bedroom Areas\* (TV Sizes Vary Per Floor Plan)
- Samsung® 43" 4K LED TV in Front Overhead
- Samsung® 50" 4K LED TV on Televator in Living Area\*
- Bose® 500 Subwoofer
- Bose® 900 Sound Touch Soundbar in Livingroom
- Xite Dash Radio with Apple CarPlay, 10" Dual Monitor with Nav-N-Go Navigation
- Xite HD 360 Camera System with Predictive Grid Lines and Tri-View Rear Camera
- Rearview Color Monitor System
- Winegard Rayzar Automatic Digital TV Antenna
- Satellite Dish Prep on Roof
- Two Bedroom Radio Speakers
- TV Jack and 110 Volt Recept in Door Side Exterior Storage Compartment
- Cat 6 TV Cables
- Infrared Repeater System to Operate Audio/Visual Components
- WiFi Ranger Denali/Spruce LTE
- 10 Bc Fire Extinguisher, Smoke Detector, Propane and Carbon Monoxide Detector
- Harmony Universal Remote

**OPTIONS**

- Radio Sirius® XM Capability with Antenna (Does not include monthly subscription)
- Exterior Entertainment Center in Sidewall with Samsung 43" 4K LED TV and Soundbar
- Exterior Entertainment Center in Storage Compartment with Samsung 43" 4K LED TV and Bose® Soundbar
- WiFi System Everest with Aspen Interior Router
- Winegard Automatic Open Face Satellite Dish-For Dish HD and Bell HD TV
- Winegard Automatic Open Face SWM Satellite Dish-for DIRECTV Std/HD and In-Motion DIRECTV Std, Dish Std/HD
- Winegard Automatic Open Face SWM Satellite Dish-for DIRECTV Std/HD
- Winegard Automatic Open Face Satellite Dish and Winegard In-Motion for Dish Network
- Winegard In-Motion Dome Satellite Dish-for Dish Std/HD, DIRECTV Std. and Bell Canada
- Two-19" Skyworth TV/DVD Monitors at each Bunk\*
- Extra Monitor on Passenger Side
- Rear Camera (2) Prep for Use with Stacker Trailer
- Universal Toll Module

\*CHECK WITH DEALERSHIP ON FLOOR PLAN AVAILABILITY







## A. ROOF

Fiberglass Roof  
Batten Insulation  
A/C Ducting  
16" on Center Aluminum Rafter Framing  
Kraft Paper Vapor Barrier  
5/8" Bead Foam  
3/16" Panel  
Padded Vinyl Overlay

## B. SIDEWALL

Interior Wall Panel  
5/8" Bead Foam  
Kraft Paper Vapor Barrier  
Batten Insulation  
Composite One-Piece  
Gelcoat Exterior Sidewall  
Aluminum Framing

## C. FLOOR

Carpet/Tile  
Carpet Padding  
5/8" Floor Decking  
Batten Insulation  
16" on Center Wood Framing  
Polyethylene Moisture Barrier

## D. EXTERIOR

15M Penguin™ Heat Pump Central  
Air Conditioner  
One-Piece Bonded Windshield  
Coated Aluminum Wheels  
Frameless, Double-Pane,  
Tinted Safety Glass Windows  
Side-Hinged Baggage Doors with  
Optional Pull-Out Tray





## A. ROOF

Fiberglass Roof  
 Batten Insulation  
 A/C Ducting  
 16" on Center Aluminum Rafter Framing  
 Kraft Paper Vapor Barrier  
 5/8" Bead Foam  
 3/16" Panel  
 Padded Vinyl Overlay

## B. SIDEWALL

Interior Wall Panel  
 5/8" Bead Foam  
 Kraft Paper Vapor Barrier  
 Batten Insulation  
 Composite One-Piece  
 Gelcoat Exterior Sidewall  
 Aluminum Framing

## C. FLOOR

Carpet/Tile  
 Carpet Padding  
 5/8" Floor Decking  
 Batten Insulation  
 16" on Center Wood Framing  
 Polyethylene Moisture Barrier

## D. EXTERIOR

15M Penguin™ Heat Pump Central  
 Air Conditioner  
 One-Piece Bonded Windshield  
 Coated Aluminum Wheels  
 Frameless, Double-Pane,  
 Tinted Safety Glass Windows  
 Side-Hinged Baggage Doors with  
 Optional Pull-Out Tray





# THE NEWMAR CUSTOMER EXPERIENCE

The Newmar difference goes beyond our industry-leading motor coaches to provide you with an unrivaled ownership experience.



## QUALITY FROM THE START

Every Newmar is crafted one at a time by folks who have spent an average of eight years building them. And each coach we assemble must undergo more than 1,000 tests and checks before ever leaving our factory.



## CAREFULLY SELECTED DEALERS

We view our dealership network in terms of quality, not quantity. Each of our dealers acts as a partner in our shared mission to exceed your highest of expectations, for an ownership experience that's second to none from day one.



## EVERYTHING IN ONE PLACE

As a Newmar owner, you'll find resources specific to your coach through Newgle, an easy-to-use knowledge base that houses everything from user guides to technical support documents.



## FRIENDS FOR LIFE

Meet fellow owners through the Newmar Kountry Klub, a top social club for RV travelers that hosts rallies and other special events throughout the U.S. and Canada.



## SEAMLESS SERVICE

When you join the Newmar family, we pair you with a dedicated service specialist with expert knowledge of your exact coach. Our service specialists guarantee dealer warranty authorizations within four business hours and ship all in-stock parts the same day, free of charge.



## ROCK-SOLID PROTECTION

All models include a one-year/unlimited mileage limited warranty and a five-year, non-transferable structural warranty that covers your coach's superstructure in the event it fails to perform. Ask your Newmar dealer for more details.



# THE NEWMAR CUSTOMER EXPERIENCE

The Newmar difference goes beyond our industry-leading motor coaches to provide you with an unrivaled ownership experience.



## QUALITY FROM THE START

Every Newmar is crafted one at a time by folks who have spent an average of eight years building them. And each coach we assemble must undergo more than 1,000 tests and checks before ever leaving our factory.



## CAREFULLY SELECTED DEALERS

We view our dealership network in terms of quality, not quantity. Each of our dealers acts as a partner in our shared mission to exceed your highest of expectations, for an ownership experience that's second to none from day one.



## EVERYTHING IN ONE PLACE

As a Newmar owner, you'll find resources specific to your coach through Newgle, an easy-to-use knowledge base that houses everything from user guides to technical support documents.



## FRIENDS FOR LIFE

Meet fellow owners through the Newmar Kountry Klub, a top social club for RV travelers that hosts rallies and other special events throughout the U.S. and Canada.



## SEAMLESS SERVICE

When you join the Newmar family, we pair you with a dedicated service specialist with expert knowledge of your exact coach. Our service specialists guarantee dealer warranty authorizations within four business hours and ship all in-stock parts the same day, free of charge.



## ROCK-SOLID PROTECTION

All models include a one-year/unlimited mileage limited warranty and a five-year, non-transferable structural warranty that covers your coach's superstructure in the event it fails to perform. Ask your Newmar dealer for more details.



# OUR PARTNERS

Newmar Quality Begins with the Company We Keep

You deserve class-leading performance from names you can trust. That's why we only work with suppliers dedicated to providing our customers with unrivaled quality, comfort, and support.



We create chemistry

## BASF

The Coatings division of BASF is a global expert in the development and production of innovative and sustainable OEM and refinish coatings that deliver solutions beyond your imagination.



## INDUSTRIAL FINISHES

Industrial Finishes has supported RV manufacturers for over four decades. The Industrial Finishes paint process delivers uncompromising quality, providing your coach with a true "Masterpiece" finish.



Driven By You

## FREIGHTLINER CUSTOM CHASSIS

Freightliner® Custom Chassis Corp. (FCCC) is renowned for delivering the industry's best ownership experience through exceptional 24/7 factory-direct support, exceptional ride and handling, and developing high-performance innovations such as DRIVETECH. It's the only RV driving system that prioritizes safety and automotive luxury by putting every command at your fingertips.



## RIVERPARK

At RiverPark, we proudly represent the leading brands in consumer electronics—brands you know and trust to provide exceptional quality and innovative technology. Newmar features Samsung's incredible 4K TVs, Xite Infotainment systems featuring Nav-N-Go Navigation, Bose® soundbars, and JBL and Infinity premium audio. Step into a 2023 Newmar and experience dazzling audio and video performance throughout the coach.



RV CHASSIS

## SPARTAN MOTORS

Spartan® Motors is an American company with over 30 years of experience designing and manufacturing the premier motorhome chassis, which provides superior performance, exceptional safety ratings, and industry-leading technology.



# OUR PARTNERS

Newmar Quality Begins with the Company We Keep

You deserve class-leading performance from names you can trust. That's why we only work with suppliers dedicated to providing our customers with unrivaled quality, comfort, and support.



We create chemistry

## BASF

The Coatings division of BASF is a global expert in the development and production of innovative and sustainable OEM and refinish coatings that deliver solutions beyond your imagination.



## INDUSTRIAL FINISHES

Industrial Finishes has supported RV manufacturers for over four decades. The Industrial Finishes paint process delivers uncompromising quality, providing your coach with a true "Masterpiece" finish.



Driven By You

## FREIGHTLINER CUSTOM CHASSIS

Freightliner® Custom Chassis Corp. (FCCC) is renowned for delivering the industry's best ownership experience through exceptional 24/7 factory-direct support, exceptional ride and handling, and developing high-performance innovations such as DRIVETECH. It's the only RV driving system that prioritizes safety and automotive luxury by putting every command at your fingertips.



## RIVERPARK

At RiverPark, we proudly represent the leading brands in consumer electronics—brands you know and trust to provide exceptional quality and innovative technology. Newmar features Samsung's incredible 4K TVs, Xite Infotainment systems featuring Nav-N-Go Navigation, Bose® soundbars, and JBL and Infinity premium audio. Step into a 2023 Newmar and experience dazzling audio and video performance throughout the coach.



RV CHASSIS

## SPARTAN MOTORS

Spartan® Motors is an American company with over 30 years of experience designing and manufacturing the premier motorhome chassis, which provides superior performance, exceptional safety ratings, and industry-leading technology.





WHEN YOU KNOW THE DIFFERENCE<sup>SM</sup>





WHEN YOU KNOW THE DIFFERENCE<sup>SM</sup>