



Columbus

BY PALOMINO



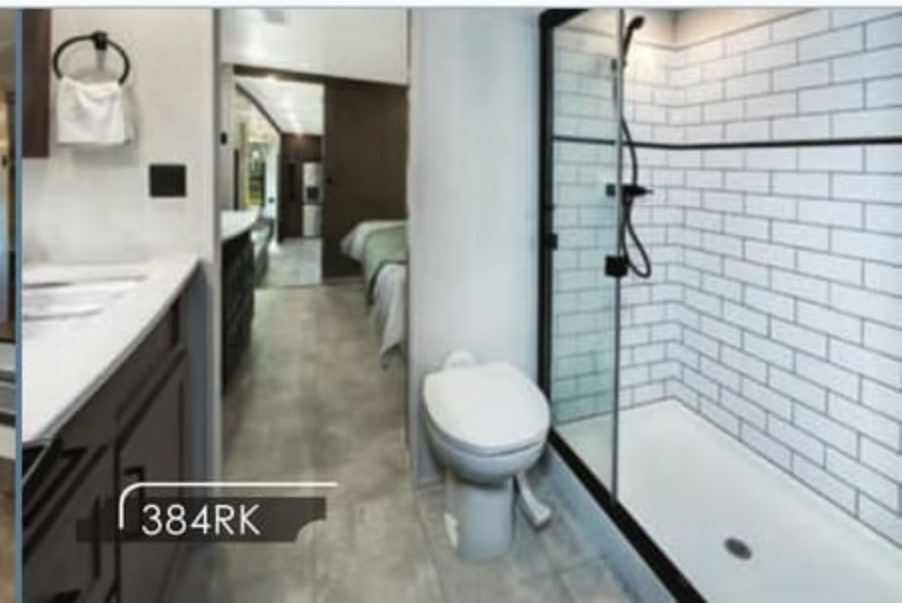
Columbus

BY PALOMINO

Columbus

TRAVEL WHERE THE ROAD TAKES YOU

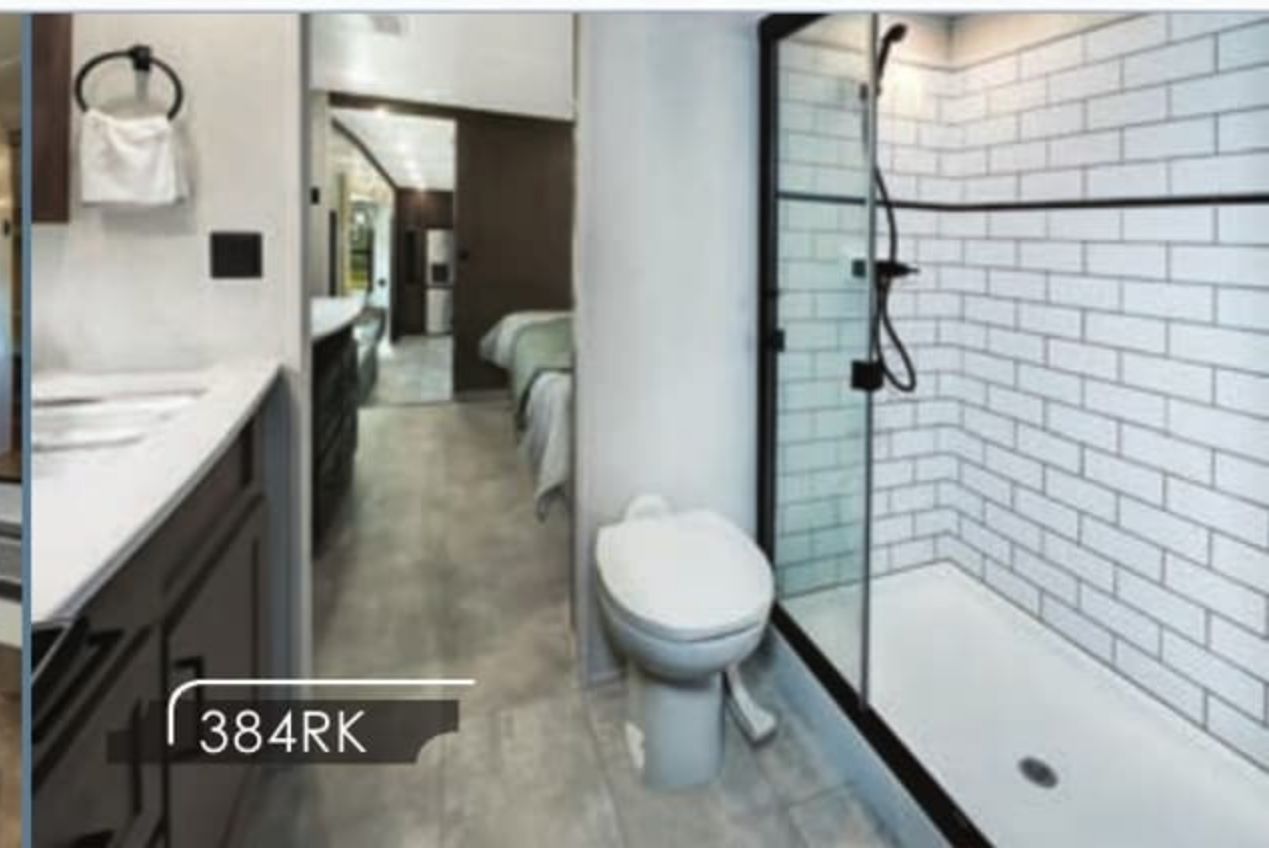
Explore new places off the beaten path and arrive at your destination in style in a Columbus 5th wheel. Designed with seasonal campers in mind, the Columbus has a distinct residential look. The 101" wide body, drop-frame chassis, residential kitchen and a larger bedroom and bathroom truly create the feeling of a home away from home. Wherever your destination, Columbus has got you covered indoors and on the road.



Columbus

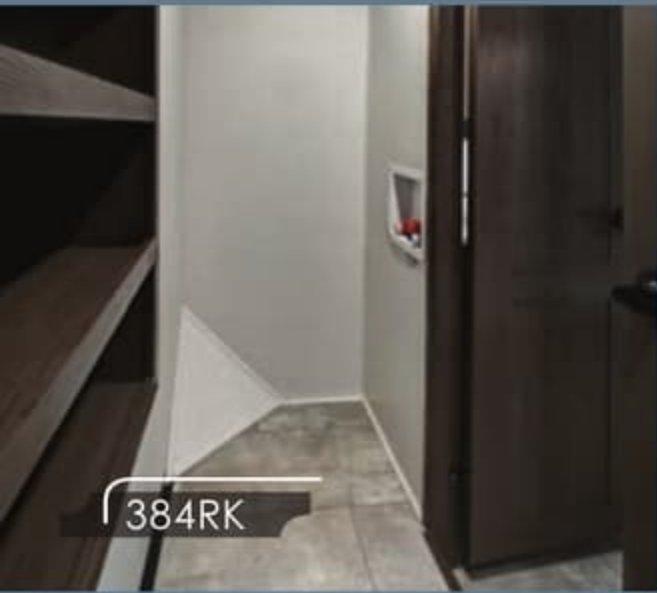
TRAVEL WHERE THE ROAD TAKES YOU

Explore new places off the beaten path and arrive at your destination in style in a Columbus 5th wheel. Designed with seasonal campers in mind, the Columbus has a distinct residential look. The 101" wide body, drop-frame chassis, residential kitchen and a larger bedroom and bathroom truly create the feeling of a home away from home. Wherever your destination, Columbus has got you covered indoors and on the road.









384RK



384RK



329DV

Construction

- 101" Wide Body
- All Welded Aluminum Frame Superstructure
- Climate Controlled Drop-Frame Storage
- 5/8" Tongue & Groove Plywood Floor
- Residential 5" Radius Wood Truss Roof
- 6' 11" Height Living Area Slides (N/A 388FK)
- Heat Ducts in Out-of-Traffic Areas
- Snap-in Ceiling Molding (No Staples or Tape)
- 12V Heat Pads on All Holding Tanks
- R38 Floor Insulation
- R40 Roof Insulation
- R11 Sidewall Insulation
- MORryde CRE3000 Suspension System
- Vacuum-Bonded Walls with Azdel
- Lippert Axles
- 16" Wheels
- Painted Fiberglass Front Cap
- 3rd Ducted A/C Prep
- Rear-View Camera Prep
- Slide Topper Prep

Interior

- Large, Frameless, Tinted Windows Throughout
- Hidden Hinges
- Soft-Close, Reinforced Doors & Drawers with Upgraded Hardware
- Upgraded Crack, Mold, & Mildew Resistant Flooring
- LED Light Fixtures
- Residential Crown Molding Throughout Unit
- Solid Wood Slide Fascia
- Roller Day/Night Shades (Main Areas Only)
- Solid Wood Steps
- Large Entry Closet for Jacket & Shoe Storage (Selected Models)

Exterior

- Slam Latches on All Storage Doors
- Magnetic Compartment Door-Holds
- Two-Tone Aluminum Wheels
- Grey Wheel-Well Skirting
- Heated Utility Convenience Center
- Black Tank Flush
- Outside Shower
- Two 30 Lb. LP Tanks
- Entry Door with Window & Screen Door
- Quick Battery Disconnect
- Power Awning with LED Lighting
- 7000 Lb. Axles
- Crank-Down Spare Tire
- 2" Hitch Receiver
- Tire Pressure Monitoring System

Kitchen

- Full Pantry (N/A 388FK)
- Upgraded True Solid-Surface Countertops
- Trash Can with Dedicated Storage (Select Models)
- Rollaway Sink Covers
- Residential Under-Counter Storage
- Residential Backsplash
- Additional Lighting Above Sink Area
- Deep-Bowl Stainless Steel Sink
- Single-Lever Faucet with Pull-Out Sprayer

Bedroom

- 15,000 BTU Coleman Bedroom Serenity A/C
- 32" Bedroom TV
- Pressed Dresser Top
- Plush Pillow Top Mattress
- Mirrored, Sliding Closet Doors
- High-End Bedspread & Pillows
- Reading Lights with USB Charging Ports

Bathroom

- Large, Signature Spa Shower Surround with Teak Wood Flip-Up Seat (Select Models)
- Solid-Surface Counter Top
- Three-Speed Power Vent
- Porcelain Toilet
- Shower Skylight

Furniture

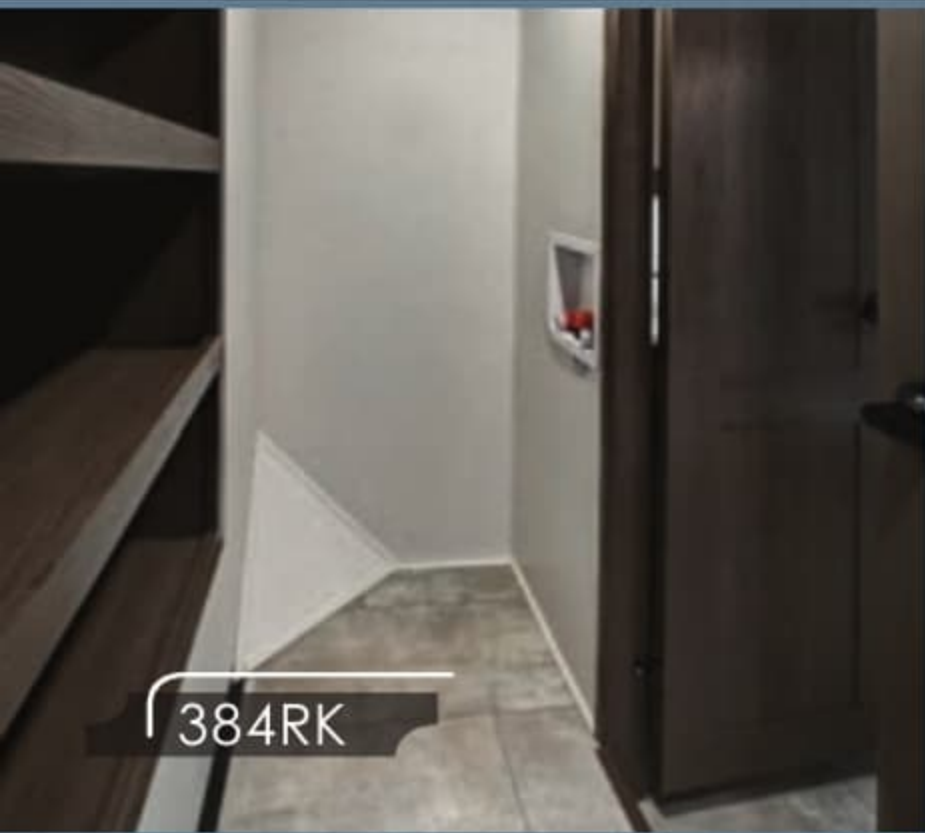
- Power Theater Seat with Storage & USB Charging
- 50/50 Split 88" Sleeper Sofa (Per Model)
- Pressed Wood Countertops
- Residential High-End Dining Chairs

Appliances

- 20 Cu. Ft. Residential Refrigerator with Ice Maker & 1000W Inverter
- Insignia 4-Burner Gas Cooktop (N/A 388FK)
- Insignia 24" Residential Oven (N/A 388FK)
- 50" TV with Built-in Soundbar
- 12 Gal Water Heater with Quick Recovery
- Washer/Dryer Prep
- Full-System Water Purifier
- 30" Residential Microwave
- (2) 15,000 BTU Coleman Serenity A/Cs with Bedroom Heat Pump
- 35,000 BTU Furnace
- Omni-Directional Rooftop Antenna with 4G LTE/Wi-Fi Prep
- 50 Amp Converter w/Built-in Charge Wizard

Options

- Stackable Washer/Dryer
- Dual-Pane Windows
- Full-Body Paint
- Slide Toppers
- 18 Cu. Ft. Gas/Electric Refrigerator
- 17.5" Goodyear H-Rated Tires with Upgraded Rims
- Generator Prep
- 200W Solar Panel
- 3rd 15,000 BTU A/C Install
- 5.5KW Onan Generator



384RK



384RK



329DV

Construction

- 101" Wide Body
- All Welded Aluminum Frame Superstructure
- Climate Controlled Drop-Frame Storage
- 5/8" Tongue & Groove Plywood Floor
- Residential 5" Radius Wood Truss Roof
- 6' 11" Height Living Area Slides (N/A 388FK)
- Heat Ducts in Out-of-Traffic Areas
- Snap-in Ceiling Molding (No Staples or Tape)
- 12V Heat Pads on All Holding Tanks
- R38 Floor Insulation
- R40 Roof Insulation
- R11 Sidewall Insulation
- MORryde CRE3000 Suspension System
- Vacuum-Bonded Walls with Azdel
- Lippert Axles
- 16" Wheels
- Painted Fiberglass Front Cap
- 3RD Ducted A/C Prep
- Rear-View Camera Prep
- Slide Topper Prep

Interior

- Large, Frameless, Tinted Windows Throughout
- Hidden Hinges
- Soft-Close, Reinforced Doors & Drawers with Upgraded Hardware
- Upgraded Crack, Mold, & Mildew Resistant Flooring
- LED Light Fixtures
- Residential Crown Molding Throughout Unit
- Solid Wood Slide Fascia
- Roller Day/Night Shades (Main Areas Only)
- Solid Wood Steps
- Large Entry Closet for Jacket & Shoe Storage (Selected Models)

Exterior

- Slam Latches on All Storage Doors
- Magnetic Compartment Door-Holds
- Two-Tone Aluminum Wheels
- Grey Wheel-Well Skirting
- Heated Utility Convenience Center
- Black Tank Flush
- Outside Shower
- Two 30 Lb. LP Tanks
- Entry Door with Window & Screen Door
- Quick Battery Disconnect
- Power Awning with LED Lighting
- 7000 Lb. Axles
- Crank-Down Spare Tire
- 2" Hitch Receiver
- Tire Pressure Monitoring System

Kitchen

- Full Pantry (N/A 388FK)
- Upgraded True Solid-Surface Countertops
- Trash Can with Dedicated Storage (Select Models)
- Rollaway Sink Covers
- Residential Under-Counter Storage
- Residential Backsplash
- Additional Lighting Above Sink Area
- Deep-Bowl Stainless Steel Sink
- Single-Lever Faucet with Pull-Out Sprayer

Bedroom

- 15,000 BTU Coleman Bedroom Serenity A/C
- 32" Bedroom TV
- Pressed Dresser Top
- Plush Pillow Top Mattress
- Mirrored, Sliding Closet Doors
- High-End Bedspread & Pillows
- Reading Lights with USB Charging Ports

Bathroom

- Large, Signature Spa Shower Surround with Teak Wood Flip-Up Seat (Select Models)
- Solid-Surface Counter Top
- Three-Speed Power Vent
- Porcelain Toilet
- Shower Skylight

Furniture

- Power Theater Seat with Storage & USB Charging
- 50/50 Split 88" Sleeper Sofa (Per Model)
- Pressed Wood Countertops
- Residential High-End Dining Chairs

Appliances

- 20 Cu. Ft. Residential Refrigerator with Ice Maker & 1000W Inverter
- Insignia 4-Burner Gas Cooktop (N/A 388FK)
- Insignia 24" Residential Oven (N/A 388FK)
- 50" TV with Built-in Soundbar
- 12 Gal Water Heater with Quick Recovery
- Washer/Dryer Prep
- Full-System Water Purifier
- 30" Residential Microwave
- (2) 15,000 BTU Coleman Serenity A/Cs with Bedroom Heat Pump
- 35,000 BTU Furnace
- Omni-Directional Rooftop Antenna with 4G LTE/Wi-Fi Prep
- 50 Amp Converter w/Built-in Charge Wizard

Options

- Stackable Washer/Dryer
- Dual-Pane Windows
- Full-Body Paint
- Slide Toppers
- 18 Cu. Ft. Gas/Electric Refrigerator
- 17.5" Goodyear H-Rated Tires with Upgraded Rims
- Generator Prep
- 200W Solar Panel
- 3RD 15,000 BTU A/C Install
- 5.5KW Onan Generator

1492 PACKAGE

- Wall-Mounted, Free-Standing Dinette Table with Extension
- Two Residential Dinette Chairs
- Two-Tone Painted Front Cap
- 50" LED TV
- 32" Bedroom TV
- Large, Signature Spa Walk-in Shower with Teak Wood Flip-Up Seat *(Select Models)*
- MCD Day/Night Roller Shades
- Hybrid Carpet
- Aluminum-Framed Bed Base with King Bed
- Power Theater Seating with USB Charging
- 50/50 Split Sleeper Sofa
- Upgraded Residential Hardware
- Deep-Bowl Stainless Steel Kitchen Sink
- Ceiling Fan in Living Room
- Stainless Steel Residential Appliance Package Featuring 20 Cu. Ft. Residential Refrigerator with Ice Maker
- Washer/Dryer Prep
- Porcelain Toilet
- Large Kitchen Pantry *(Select Models)*
- Electric Fireplace
- Kitchen Maxx Air Vent with Rain Hood
- Pop-Up Receptacles
- Two Folding Chairs
- Wood-Look Linoleum
- Dishwasher Prep *(N/A 388FK)*

VOYAGER PACKAGE

- 6-Point Hydraulic Leveling System
- MORryde CRE3000 Suspension
- 7000 Lb. Axles
- Two-Tone Aluminum Wheels
- G-Rated Tires with G-Rated Spare
- MORryde Upgraded Pinbox
- High-Gloss Fiberglass with Azdel Onboard
- Two-Tone Painted Front Cap
- Two 15,000 BTU Quietcool Serenity A/C Units
- 12 Gal Water Heater
- Power Cord Storage Reel
- 2" Hitch Receiver
- Tire Pressure Monitoring System
- Frameless Windows
- Quick Battery Disconnect
- 12V Heat Pads on Tanks
- LED Awning Lights
- MORryde Strut-Assist Stepabove Entry Steps
- Syphon 360 Vent Covers
- Screenless One Control® Operating System
- Wi-Fi Booster with 4G LTE Capability Prep
- Ladder
- LP Quick Connect
- Back Up Camera Prep
- Slide Topper Prep
- Go Power Solar Prep
- Metal-Wrapped Awning



1492 PACKAGE

- Wall-Mounted, Free-Standing Dinette Table with Extension
- Two Residential Dinette Chairs
- Two-Tone Painted Front Cap
- 50" LED TV
- 32" Bedroom TV
- Large, Signature Spa Walk-in Shower with Teak Wood Flip-Up Seat *(Select Models)*
- MCD Day/Night Roller Shades
- Hybrid Carpet
- Aluminum-Framed Bed Base with King Bed
- Power Theater Seating with USB Charging
- 50/50 Split Sleeper Sofa
- Upgraded Residential Hardware
- Deep-Bowl Stainless Steel Kitchen Sink
- Ceiling Fan in Living Room
- Stainless Steel Residential Appliance Package Featuring 20 Cu. Ft. Residential Refrigerator with Ice Maker
- Washer/Dryer Prep
- Porcelain Toilet
- Large Kitchen Pantry *(Select Models)*
- Electric Fireplace
- Kitchen Maxx Air Vent with Rain Hood
- Pop-Up Receptacles
- Two Folding Chairs
- Wood-Look Linoleum
- Dishwasher Prep *(N/A 388FK)*

VOYAGER PACKAGE

- 6-Point Hydraulic Leveling System
- MORryde CRE3000 Suspension
- 7000 Lb. Axles
- Two-Tone Aluminum Wheels
- G-Rated Tires with G-Rated Spare
- MORryde Upgraded Pinbox
- High-Gloss Fiberglass with Azdel Onboard
- Two-Tone Painted Front Cap
- Two 15,000 BTU Quietcool Serenity A/C Units
- 12 Gal Water Heater
- Power Cord Storage Reel
- 2" Hitch Receiver
- Tire Pressure Monitoring System
- Frameless Windows
- Quick Battery Disconnect
- 12V Heat Pads on Tanks
- LED Awning Lights
- MORryde Strut-Assist Stepabove Entry Steps
- Syphon 360 Vent Covers
- Screenless One Control® Operating System
- Wi-Fi Booster with 4G LTE Capability Prep
- Ladder
- LP Quick Connect
- Back Up Camera Prep
- Slide Topper Prep
- Go Power Solar Prep
- Metal-Wrapped Awning



299RL



Dimensions	Length: 36' 1"	WIDTH: 101"	HEIGHT: 13' 6"	AWNING: 10', 16'
Weights	UVW: 11284	GVWR: 15880	CCC: 4596	HITCH: 2180
Tanks	Fresh: 75 Gal	GRAY: 78 Gal	BLACK: 39 GAL	

329DV



Dimensions	Length: 37' 6"	WIDTH: 101"	HEIGHT: 13' 6"	AWNING: 10', 17'
Weights	UVW: 11964	GVWR: 14962	CCC: 2998	Hitch: 2035
Tanks	Fresh: 75 Gal	GRAY: 71 Gal	BLACK: 39 GAL	

375BH



DS Slide Option



Dimensions	Length: 42' 11"	WIDTH: 101"	HEIGHT: 13' 6"	AWNING: 11', 16'
Weights	UVW: 13110	GVWR: 16755	CCC: 3586	HITCH: 2755
Tanks	Fresh: 75 Gal	GRAY: 117 Gal	BLACK: 78 GAL	

379MB



Dimensions	Length: 41' 2"	WIDTH: 101"	HEIGHT: 13' 6"	AWNING: 11', 20'
Weights	UVW: 12624	GVWR: 15580	CCC: 2956	HITCH: 2100
Tanks	Fresh: 75 Gal	GRAY: 71 Gal	BLACK: 39 GAL	

299RL



Dimensions	Length: 36' 1"	WIDTH: 101"	HEIGHT: 13' 6"	AWNING: 10', 16'
Weights	UVW: 11284	GVWR: 15880	CCC: 4596	HITCH: 2180
Tanks	Fresh: 75 Gal	GRAY: 78 Gal	BLACK: 39 GAL	

329DV

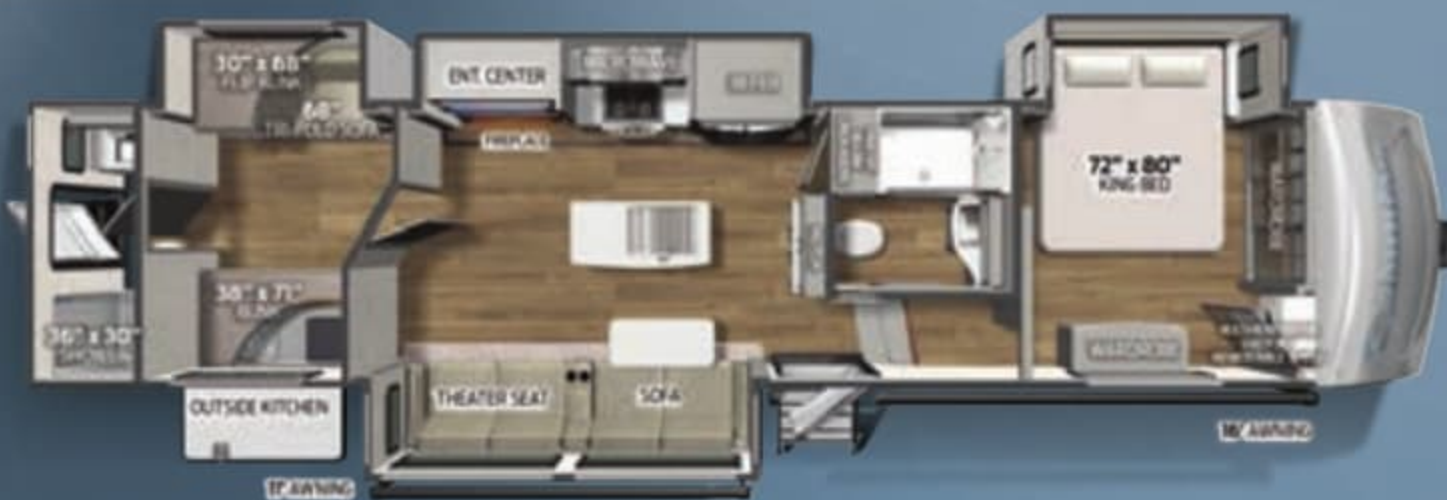


Dimensions	Length: 37' 6"	WIDTH: 101"	HEIGHT: 13' 6"	AWNING: 10', 17'
Weights	UVW: 11964	GVWR: 14962	CCC: 2998	Hitch: 2035
Tanks	Fresh: 75 Gal	GRAY: 71 Gal	BLACK: 39 GAL	

375BH



DS Slide Option



Dimensions	Length: 42' 11"	WIDTH: 101"	HEIGHT: 13' 6"	AWNING: 11', 16'
Weights	UVW: 13110	GVWR: 16755	CCC: 3586	HITCH: 2755
Tanks	Fresh: 75 Gal	GRAY: 117 Gal	BLACK: 78 GAL	

379MB



Dimensions	Length: 41' 2"	WIDTH: 101"	HEIGHT: 13' 6"	AWNING: 11', 20'
Weights	UVW: 12624	GVWR: 15580	CCC: 2956	HITCH: 2100
Tanks	Fresh: 75 Gal	GRAY: 71 Gal	BLACK: 39 GAL	

382FB



Dimensions	Length: 41' 2"	WIDTH: 101"	HEIGHT: 13' 6"	AWNING: 11', 12'
Weights	UVW: 13122	GVWR: 16150	CCC: 3028	HITCH: 2573
Tanks	Fresh: 75 Gal	GRAY: 78 Gal	BLACK: 39 GAL	

383FB



Dimensions	Length: 41' 2"	WIDTH: 101"	HEIGHT: 13' 6"	AWNING: 11', 12'
Weights	UVW: 13322	GVWR: 16150	CCC: 2828	HITCH: 2573
Tanks	Fresh: 75 Gal	GRAY: 78 Gal	BLACK: 78 GAL	

384RK



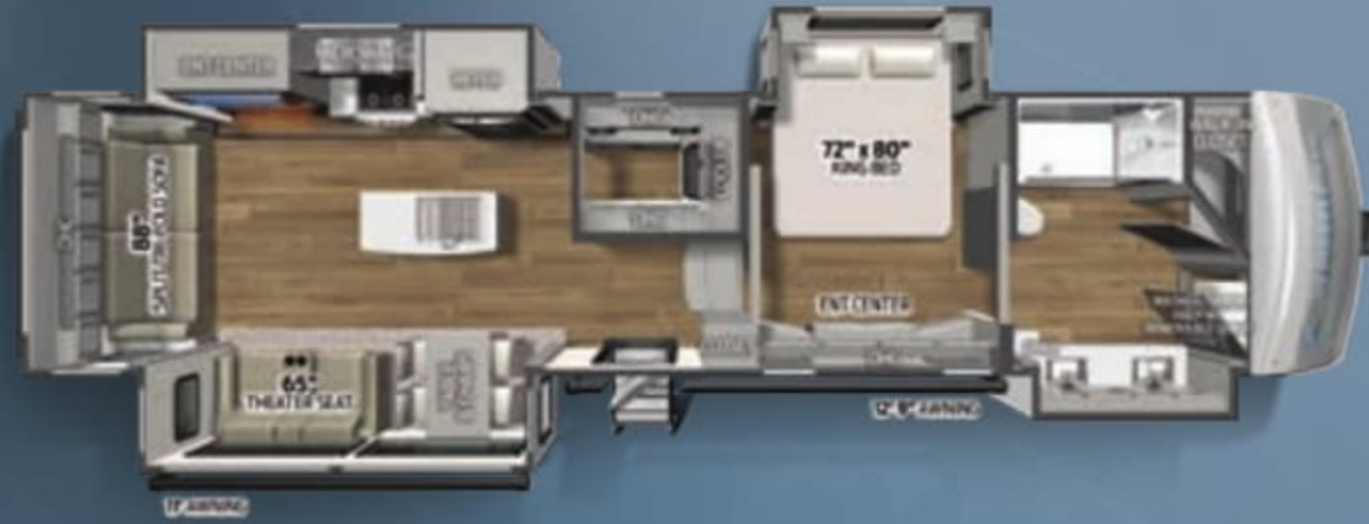
Dimensions	Length: 42' 2"	WIDTH: 101"	HEIGHT: 13' 6"	AWNING: 11', 18'
Weights	UVW: 12819	GVWR: 16600	CCC: 3781	HITCH: 2600
Tanks	Fresh: 75 Gal	GRAY: 78 Gal	BLACK: 71 GAL	

388FK



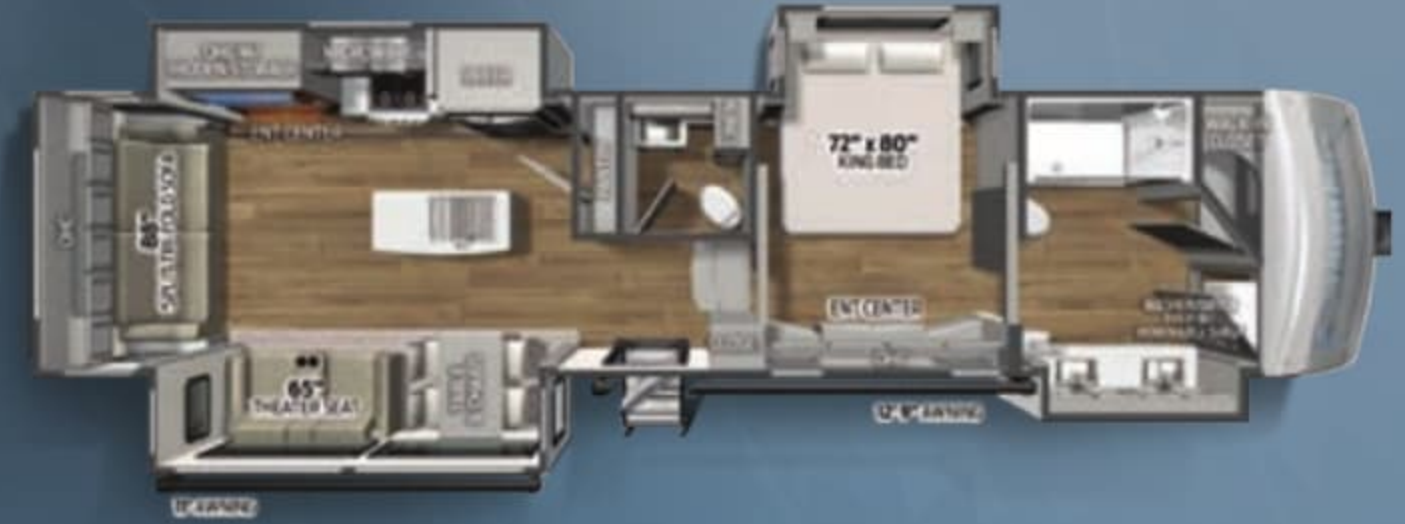
Dimensions	Length: 41' 11"	WIDTH: 101"	HEIGHT: 13' 6"	AWNING: 18' 6"
Weights	UVW: 13744	GVWR: 16743	CCC: 2999	HITCH: 2367
Tanks	Fresh: 75 Gal	GRAY: 75 Gal	BLACK: 39 GAL	

382FB



Dimensions	Length: 41' 2"	WIDTH: 101"	HEIGHT: 13' 6"	AWNING: 11', 12'
Weights	UVW: 13122	GVWR: 16150	CCC: 3028	HITCH: 2573
Tanks	Fresh: 75 Gal	GRAY: 78 Gal	BLACK: 39 GAL	

383FB



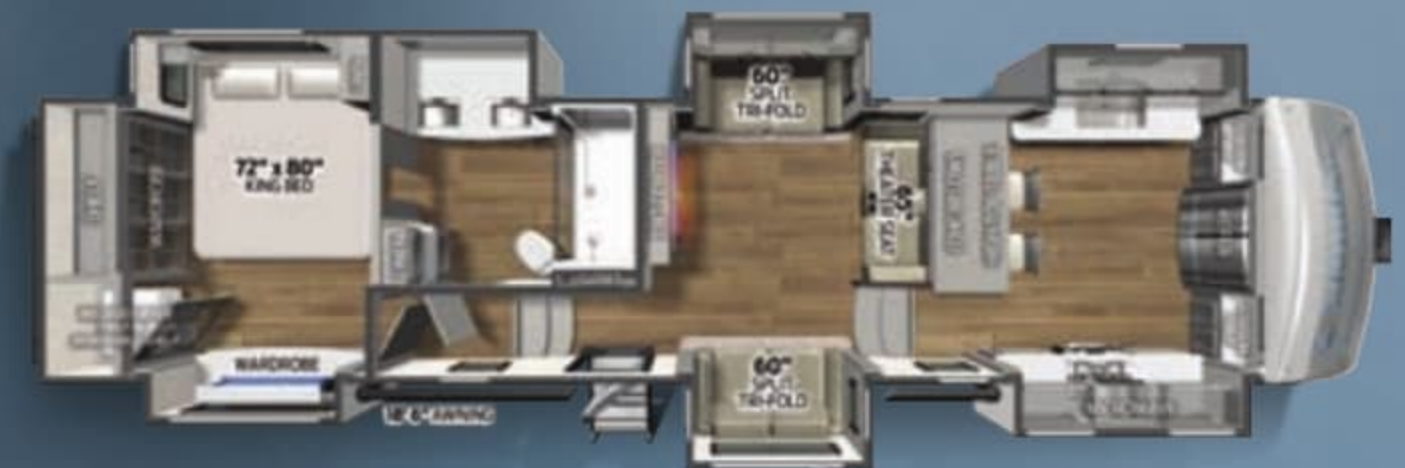
Dimensions	Length: 41' 2"	WIDTH: 101"	HEIGHT: 13' 6"	AWNING: 11', 12'
Weights	UVW: 13322	GVWR: 16150	CCC: 2828	HITCH: 2573
Tanks	Fresh: 75 Gal	GRAY: 78 Gal	BLACK: 78 GAL	

384RK



Dimensions	Length: 42' 2"	WIDTH: 101"	HEIGHT: 13' 6"	AWNING: 11', 18'
Weights	UVW: 12819	GVWR: 16600	CCC: 3781	HITCH: 2600
Tanks	Fresh: 75 Gal	GRAY: 78 Gal	BLACK: 71 GAL	

388FK



Dimensions	Length: 41' 11"	WIDTH: 101"	HEIGHT: 13' 6"	AWNING: 18' 6"
Weights	UVW: 13744	GVWR: 16743	CCC: 2999	HITCH: 2367
Tanks	Fresh: 75 Gal	GRAY: 75 Gal	BLACK: 39 GAL	

PALOMINO

COLUMBUS BY PALOMINO
A Division Of Forest River, Inc.
105-1/2 C.R. 14 • Middlebury, In 46540
www.palominorv.com



Follow us!
#RVBOUND



Specification Definitions

GVWR (Gross Vehicle Weight Rating): is the maximum permissible weight of the unit when fully loaded. It includes all weights, inclusive of all fluids, cargo, optional equipment and accessories. For safety and product performance do NOT exceed the GVWR.
GAWR (Gross Axle Weight Rating): is the maximum permissible weight, including cargo, fluids, optional equipment and accessories that can be safely supported by a combination of all axles. **UVW (Unloaded Vehicle Weight):** is the typical weight of the unit as manufactured at the factory. It includes all weight at the unit's axle(s) and tongue or pin and LP Gas. The UVW does not include cargo, fresh potable water, additional optional equipment or dealer installed accessories. **CCC (Cargo Carrying Capacity):*** is the amount of weight available for fresh potable water, cargo, additional optional equipment and accessories. CCC is equal to GVWR minus UVW. Available CCC should accommodate fresh potable water (8.3 lww per gallon). Before filling the fresh water tank, empty the black and gray tanks to provide for more cargo capacity. Each Forest River RV is weighed at the manufacturing facility prior to shipping. A label identifying the unloaded vehicle weight of the actual unit and the cargo carrying capacity is applied to every Forest River RV prior to leaving our facilities. The load capacity of your unit is designated by weight, not by volume, so you cannot necessarily use all available space when loading your unit.

All information contained in this brochure is believed to be accurate at the time of publication. However, during the model year, it may be necessary to make revisions and Forest River, Inc., reserves the right to make all such changes without notice, including prices, colors, materials, equipment and specifications as well as the addition of new models and the discontinuance of models shown in this brochure. Therefore, please consult with your Forest River dealer and confirm the existence of any materials, design or specifications that are material to your purchase decision. © 2022 Palomino RV, a Division of Forest River, Inc., a Berkshire Hathaway Company. 11/01 Columbus

*Estimated Average based on standard build optional equipment



24/7 EMERGENCY ROADSIDE ASSISTANCE WITH VEHICLE PURCHASE*

TOWING
JUMP-STARTS
TIRE CHANGES
FLUID DELIVERY
LOCKOUT
SERVICE

WINCH-OUT
MOBILE MECHANIC
TECHNICAL
SUPPORT
DEALER LOCATOR
SERVICES



*VALID FOR 1 YEAR FROM DATE OF PURCHASE



PRE-DELIVERY INSPECTION FACILITY

20,000 square feet of quality assurance. The bare essentials for a premium product. This state-of-the-art facility gives immediate daily feedback to production for quality assurance in every unit built.

CUSTOMER SATISFACTION



www.ForestRiverBuyLocal.com



Learn More
Scan this barcode using
a QR Reader on your
smart phone to learn
more about Forest River.



A Berkshire Hathaway company.

FREE MEMBERSHIP
to Forest River Owners' Group

www.forestriverfrog.com



FOREST RIVER OWNER "DIGITAL KIT" APP

Now you can have your Owner's Manual with you wherever you are. Download our FREE App from the App Store or Google Play and you'll have the information right at your fingertips.



PALOMINO

COLUMBUS BY PALOMINO
 A Division Of Forest River, Inc.
 105-1/2 C.R. 14 • Middlebury, In 46540
www.palominoRV.com



Follow us!
 #RVBOUND



Specification Definitions

GVWR (Gross Vehicle Weight Rating): is the maximum permissible weight of the unit when fully loaded. It includes all weights, inclusive of all fluids, cargo, optional equipment and accessories. For safety and product performance do NOT exceed the GVWR.
GAWR (Gross Axle Weight Rating): is the maximum permissible weight, including cargo, fluids, optional equipment and accessories that can be safely supported by a combination of all axles. **UVW (Unloaded Vehicle Weight):** is the typical weight of the unit as manufactured at the factory. It includes all weight at the unit's axle(s) and tongue or pin and LP Gas. The UVW does not include cargo, fresh potable water, additional optional equipment or dealer installed accessories. **CCC (Cargo Carrying Capacity):*** is the amount of weight available for fresh potable water, cargo, additional optional equipment and accessories. CCC is equal to GVWR minus UVW. Available CCC should accommodate fresh potable water (8.3 IWW per gallon). Before filling the fresh water tank, empty the black and gray tanks to provide for more cargo capacity. Each Forest River RV is weighed at the manufacturing facility prior to shipping. A label identifying the unloaded vehicle weight of the actual unit and the cargo carrying capacity is applied to every Forest River RV prior to leaving our facilities. The load capacity of your unit is designated by weight, not by volume, so you cannot necessarily use all available space when loading your unit.

All information contained in this brochure is believed to be accurate at the time of publication. However, during the model year, it may be necessary to make revisions and Forest River, Inc., reserves the right to make all such changes without notice, including prices, colors, materials, equipment and specifications as well as the addition of new models and the discontinuance of models shown in this brochure. Therefore, please consult with your Forest River dealer and confirm the existence of any materials, design or specifications that are material to your purchase decision. © 2022 Palomino RV, a Division of Forest River, Inc., a Berkshire Hathaway Company. 11/01 Columbus

*Estimated Average based on standard build optional equipment



24/7 EMERGENCY ROADSIDE ASSISTANCE WITH VEHICLE PURCHASE*

- | | |
|----------------|-----------------|
| TOWING | WINCH-OUT |
| JUMP-STARTS | MOBILE MECHANIC |
| TIRE CHANGES | TECHNICAL |
| FLUID DELIVERY | SUPPORT |
| LOCKOUT | DEALER LOCATOR |
| SERVICE | SERVICES |



*VALID FOR 1 YEAR FROM DATE OF PURCHASE



PRE-DELIVERY INSPECTION FACILITY

20,000 square feet of quality assurance. The bare essentials for a premium product. This state-of-the-art facility gives immediate daily feedback to production for quality assurance in every unit built.

CUSTOMER SATISFACTION



www.ForestRiverBuyLocal.com



Learn More
 Scan this barcode using a QR Reader on your smart phone to learn more about Forest River.



A Berkshire Hathaway company.

FREE MEMBERSHIP
 to Forest River Owners' Group

www.forestriverfrog.com



FOREST RIVER OWNER "DIGITAL KIT" APP

Now you can have your Owner's Manual with you wherever you are. Download our FREE App from the App Store or Google Play and you'll have the information right at your fingertips.

