

Single Axle



172FB



180BHS



19BH



182RB



188BHS

Dual Axle



20FBS



26RLS



20MB



263TH



233TH



26BHS



26BH



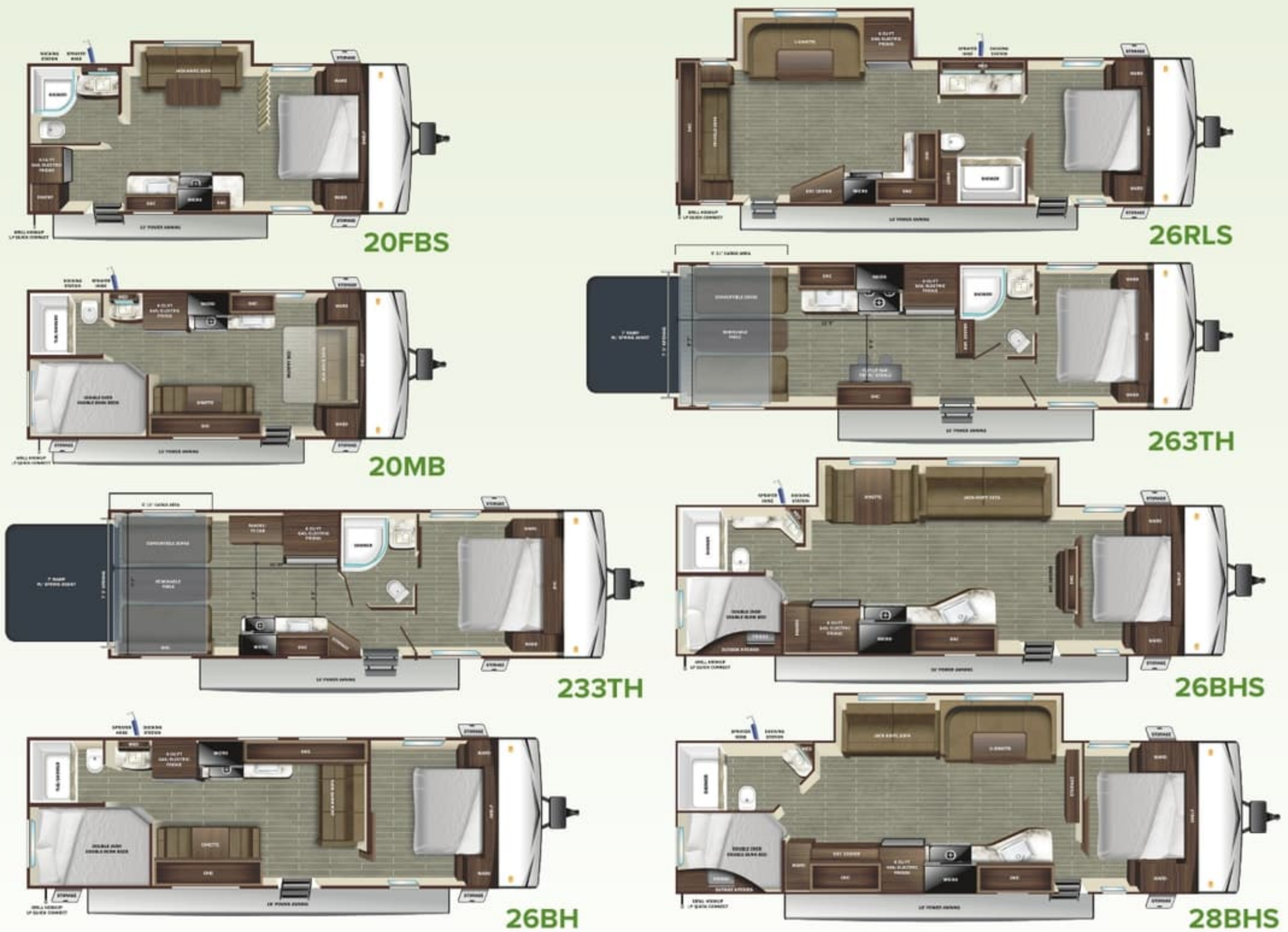
28BHS

Optional 8 cu. ft. 12V refrigerator (available on all floorplans shown)

Single Axle



Dual Axle



Optional 8 cu. ft. 12V refrigerator (available on all floorplans shown)

STANDARD INTERIOR EQUIPMENT

- 75 lb. ball bearing drawer guides
- 81" interior height
- AM/FM/Bluetooth® radio with indoor/outdoor zoned speakers
- Closeable A/C vents
- Flush floor slides with residential vinyl flooring
- Foot flush toilet
- Hardwood cabinet doors
- LED interior lighting
- Pleated blackout night shades
- Pocket-screwed lumbercore cabinet construction
- Pressed membrane kitchen countertops
- Range hood
- Residential high-rise kitchen faucet with pull-down sprayer
- Single basin under-mount kitchen sink
- Storage below main bed

STANDARD EXTERIOR EQUIPMENT

- 120 GFCI protected receptacle
- 5/8" main floor decking
- 96" exterior width
- Black front diamond plate protection
- Exterior docking center (dual axle models)
- Detachable power cords
- Fiberglass insulation
- Flexible LP lines

- Galvanized wheel wells
- Grab handle
- In-frame battery rack
- Magnetic baggage door catches
- Magnum Roof™ system
- Marine grade exterior speakers (2)
- PVC roofing membrane (limited lifetime warranty)
- Rain guttering with molded drip spouts
- Rear camera prep
- Safety bumper with drain hose carrier and end caps
- Self-adjusting electric brakes and E-Z Lube® axles
- Thermal Seal- enclosed, insulated, and heated underbelly and fully insulated roof with a PVC roofing membrane (dual axle models)
- Tinted safety-glass windows throughout

CUSTOMER CONVENIENCE PACKAGE (Mandatory)

- 13,500 BTU roof mounted A/C
- 17" oven (dual axle models)
- 2-burner range with glass cover (single axle models)
- 3-burner range with glass cover (dual axle models)
- Dome style digital TV antenna
- Gas/electric water heater
- Microwave
- Powered awning with LED lighting

- Powered bathroom vent
- Nitrogen filled radial tires
- Residential vinyl flooring throughout
- Solar prep
- Stabilizer jacks (4)
- Solid swing down step (main)
- Entrance door with window and shade prep
- Water heater bypass

OPTIONS

- Xtend Solar I Package (200 watt solar panel with 30 amp controller)
- 15,000 BTU A/C (dual axle models)
- 50 amp service with 2nd A/C (26BHS, 26RLS, 28BHS)
- 8 cu. ft. 12V refrigerator
- Smart TV
- Spare tire with carrier (mandatory on single axle models)



Go the distance with our 3-Year Limited Structural Warranty plus a 1-Year Limited Manufacturer's Warranty—freedom from worry is your best travel companion.

SPECIFICATIONS (May Include Estimated Values)	172FB ¹	180BHS ¹	198H ¹	182RB	188BHS	20FBS	20MB	233TH	268H ²	26RLS	263TH	26BHS	28BHS
Unloaded Vehicle Weight (lbs.)	3,075	3,760	3,460	3,470	TBD	4,595	4,183	5,240	4,640	5,780	5,020	5,730	6,165
Dry Hitch Weight (lbs.)	280	410	360	380	TBD	465	530	845	580	700	845	705	760
Gross Vehicle Weight Rating (GVWR)	3,750	4,900	4,450	4,250	4,900	6,000	5,250	7,500	6,500	7,500	7,500	7,500	7,600
Cargo (Gross)	675	1,140	990	780	TBD	1,405	1,067	2,260	1,860	1,720	2,480	1,770	1,435
Exterior Length (Overall)	19' 3"	22' 2"	22' 4"	22' 11"	23' 7"	23' 8"	24' 6"	28' 4"	29' 7"	30' 1"	30' 5"	30' 8"	33' 10"
Exterior Height	10' 2"	10' 6"	10' 7"	10' 2"	10' 2"	11' 0"	10' 6"	10' 6"	10' 6"	10' 11"	11' 1"	11' 1"	11' 1"
Exterior Width	8' 0"	8' 0"	8' 0"	8' 0"	8' 0"	8' 0"	8' 0"	8' 0"	8' 0"	8' 0"	8' 0"	8' 0"	8' 0"
Exterior Width (Slides Out)	N/A	10' 1"	N/A	N/A	10' 6"	9' 5"	N/A	N/A	N/A	11' 0"	N/A	11' 0"	11' 0"
Interior Height	6' 9"	6' 9"	6' 9"	6' 9"	6' 9"	6' 9"	6' 9"	6' 9"	6' 9"	6' 9"	6' 9"	6' 9"	6' 9"
Fresh Water Capacity (Gal.) ³	26	26	26	26	26	48	48	48	48	48	48	48	48
Gray Waste Water Capacity (Gal.)	19.9	19.9	19.9	19.9	39	32.5	32.5	39	32.5	32.5	39	32.5	39
Black Waste Water Capacity (Gal.)	19.9	19.9	19.9	19.9	39	32.5	32.5	39	32.5	32.5	39	32.5	39
LP Capacity (lbs.)	20	20	20	20	20	60	60	60	60	60	60	60	60
Tire Size	14"	15"	15"	14"	15"	14"	14"	14"	14"	14"	14"	15"	14"
Awning Size	9'	11'	13'	13'	16'	12'	18'	16'	19'	16'	16'	16'	18'

¹Includes water heater

²Specifications, weights, measurements, and capacities above are from model year 2022 and are estimates only for model year 2023. Actual specs, weights, measurements, and capacities may be different for model year 2023 than what is listed above. For the most up-to-date model year 2023 specs, please speak with your local Starcraft dealer, and <http://www.StarcraftRV.com>, and check the yellow sticker on the door of your Starcraft RV before purchasing, operating, and towing the RV.

³Only available in Western United States and Western Canada
⁴Only available in Eastern United States and Eastern Canada

Learn more about our standard features and full options packages at StarcraftRV.com/Autumn-Ridge

LOCAL DEALER INFO

STARCRRAFT
 Starcraft RV — Part of the Jayco Family of Companies
 903 S. Main Street
 Middlebury, IN 46540, USA
 (800) 945-4787

Unloaded Vehicle Weight (UVW). Sometimes referred to as "Dry Weight" UVW means the total weight of the trailer as built at the factory. The UVW is used to prohibit overloading and other prohibited activities. Does not include water, fresh, propane, battery, propane or diesel auxiliary accessories, hitch weight, etc. The UVW is used in product literature and other promotional materials. Does not include cargo, fresh water, propane gas, options or dealer-installed accessories. The addition of these items of items will affect the UVW. Exceeding the UVW is prohibited. Exceeding the UVW may void the warranty. Please refer to the manufacturer's literature for more information. Always use proper tie-down technique to load and handle the UVW of the RV you tow. Remove weights and items of your RV before and behind a hitchweight advisor for questions or advice. Whether you are new to RVing or a veteran, get a tow for the performance of your tow vehicle before heading out on the road. When you are at the RV you must drive differently than when you drive a single vehicle. Practice backing up, driving, backing up and towing in a safe environment to learn and performance instruction. Starcraft offers a weight table for each RV which lists weight information for that vehicle. See specifications sheet on the respective page of this brochure.

Starcraft RV, 903 S. Main Street | Middlebury, IN 46540. See dealer for further information and prices. No representation is made in this brochure and on www.StarcraftRV.com or the other literature of the brand or publications herein. Starcraft RV reserves the right to make changes and to discontinue models without notice or obligation. Photography may show optional equipment or props used for illustration purposes only. RVs built for sale in Canada may differ in features to Canadian codes. Starcraft and the S are registered trademarks of Jayco, Inc. Printed in U.S.A. 20230223



STANDARD INTERIOR EQUIPMENT

- 75 lb. ball bearing drawer guides
- 81" interior height
- AM/FM/Bluetooth® radio with indoor/outdoor zoned speakers
- Closeable A/C vents
- Flush floor slides with residential vinyl flooring
- Foot flush toilet
- Hardwood cabinet doors
- LED interior lighting
- Pleated blackout night shades
- Pocket-screwed lumbercore cabinet construction
- Pressed membrane kitchen countertops
- Range hood
- Residential high-rise kitchen faucet with pull-down sprayer
- Single basin under-mount kitchen sink
- Storage below main bed

STANDARD EXTERIOR EQUIPMENT

- 120 GFCI protected receptacle
- 5/8" main floor decking
- 96" exterior width
- Black front diamond plate protection
- Exterior docking center (dual axle models)
- Detachable power cords
- Fiberglass insulation
- Flexible LP lines

- Galvanized wheel wells
- Grab handle
- In-frame battery rack
- Magnetic baggage door catches
- Magnum Roof™ system
- Marine grade exterior speakers (2)
- PVC roofing membrane (limited lifetime warranty)
- Rain guttering with molded drip spouts
- Rear camera prep
- Safety bumper with drain hose carrier and end caps
- Self-adjusting electric brakes and E-Z Lube® axles
- Thermal Seal- enclosed, insulated, and heated underbelly and fully insulated roof with a PVC roofing membrane (dual axle models)
- Tinted safety-glass windows throughout

CUSTOMER CONVENIENCE PACKAGE (Mandatory)

- 13,500 BTU roof mounted A/C
- 17" oven (dual axle models)
- 2-burner range with glass cover (single axle models)
- 3-burner range with glass cover (dual axle models)
- Dome style digital TV antenna
- Gas/electric water heater
- Microwave
- Powered awning with LED lighting

- Powered bathroom vent
- Nitrogen filled radial tires
- Residential vinyl flooring throughout
- Solar prep
- Stabilizer jacks (4)
- Solid swing down step (main)
- Entrance door with window and shade prep
- Water heater bypass

OPTIONS

- Xtend Solar I Package (200 watt solar panel with 30 amp controller)
- 15,000 BTU A/C (dual axle models)
- 50 amp service with 2nd A/C (26BHS, 26RLS, 28BHS)
- 8 cu. ft. 12V refrigerator
- Smart TV
- Spare tire with carrier (mandatory on single axle models)



Go the distance with our **3-Year Limited Structural Warranty** plus a 1-Year Limited Manufacturer's Warranty—freedom from worry is your best travel companion.

SPECIFICATIONS (May Include Estimated Values)	172FB ¹	180BHS ¹	19BH ¹	182RB	188BHS	20FBS	20MB	233TH	26BH ²	26RLS	263TH	26BHS	28BHS
Unloaded Vehicle Weight (lbs.)	3,075	3,760	3,460	3,470	TBD	4,595	4,183	5,240	4,640	5,780	5,020	5,730	6,165
Dry Hitch Weight (lbs.)	280	410	360	380	TBD	465	530	845	580	700	845	705	760
Gross Vehicle Weight Rating (GVWR)	3,750	4,900	4,450	4,250	4,900	6,000	5,250	7,500	6,500	7,500	7,500	7,500	7,600
Cargo (Gross)	675	1,140	990	780	TBD	1,405	1,067	2,260	1,860	1,720	2,480	1,770	1,435
Exterior Length (Overall)	19' 3"	22' 2"	22' 4"	22' 11"	23' 7"	23' 8"	24' 6"	28' 4"	29' 7"	30' 1"	30' 5"	30' 8"	33' 10"
Exterior Height	10' 2"	10' 6"	10' 7"	10' 2"	10' 2"	11' 0"	10' 6"	10' 6"	10' 6"	10' 11"	11' 1"	11' 1"	11' 1"
Exterior Width	8' 0"	8' 0"	8' 0"	8' 0"	8' 0"	8' 0"	8' 0"	8' 0"	8' 0"	8' 0"	8' 0"	8' 0"	8' 0"
Exterior Width (Slides Out)	N/A	10' 1"	N/A	N/A	10' 6"	9' 5"	N/A	N/A	N/A	11' 0"	N/A	11' 0"	11' 0"
Interior Height	6' 9"	6' 9"	6' 9"	6' 9"	6' 9"	6' 9"	6' 9"	6' 9"	6' 9"	6' 9"	6' 9"	6' 9"	6' 9"
Fresh Water Capacity (Gal.) ³	26	26	26	26	26	48	48	48	48	48	48	48	48
Gray Waste Water Capacity (Gal.)	19.9	19.9	19.9	19.9	39	32.5	32.5	39	32.5	32.5	39	32.5	39
Black Waste Water Capacity (Gal.)	19.9	19.9	19.9	19.9	39	32.5	32.5	39	32.5	32.5	39	32.5	39
LP Capacity (lbs.)	20	20	20	20	20	60	60	60	60	60	60	60	60
Tire Size	14"	15"	15"	14"	15"	14"	14"	14"	14"	14"	14"	15"	14"
Awning Size	9'	11'	13'	13'	16'	12'	18'	16'	19'	16'	16'	16'	18'

¹Includes water heater

²Specifications, weights, measurements, and capacities above are from model year 2022 and are estimates only for model year 2023. Actual specs, weights, measurements, and capacities may be different for model year 2023 than what is listed above. For the most up-to-date model year 2023 specs, please speak with your local Starcraft dealer, visit <http://www.StarcraftRV.com>, and check the yellow sticker on the door of your Starcraft RV before purchasing, operating, and towing the RV.

³Only available in Western United States and Western Canada
⁴Only available in Eastern United States and Eastern Canada

Learn more about our standard features and full options packages at StarcraftRV.com/Autumn-Ridge



StarcraftRV.com
 #CampingPureAndSimple

LOCAL DEALER INFO

STARCRAFT
 Starcraft RV – Part of the Jayco Family of Companies
 903 S. Main Street
 Middlebury, IN 46540 USA
 (800) 945-4787

Unloaded Vehicle Weight (UVW). Sometimes referred to as "Dry Weight," UVW means the typical weight of this trailer as built at the factory. The UVW, as used in product literature and other promotional materials, does not include cargo, fresh water, propane, options or dealer-installed accessories. Hitch Weight (HW). The hitch weight, as used in product literature and other promotional materials, does not include cargo, fresh water, propane gas, options or dealer-installed accessories. The addition of these types of items will either add to or subtract from the stated hitch weight. It is important for your safety and enjoyment that your tow vehicle be adequately rated and equipped to tow and handle the GVWR of the RV you select. Review weights and rating of your tow vehicle and consult a competent advisor for questions or advice. Whether you are new to RVing or a veteran, get a feel for the performance of your tow vehicle before heading out on the roadways. When you tow an RV, you must drive differently than when you drive a single vehicle. Practice backing up, driving, backing up and braking in a safe environment or seek out professional instruction. Starcraft affixes a weight label to each RV which lists weight information for that vehicle. See specifications chart on the respective pages of this brochure.

Starcraft RV | 903 S. Main Street | Middlebury, IN 46540 | See dealer for further information and prices. All information in this brochure and on www.StarcraftRV.com is the latest available at the time of publication approval. Starcraft RV reserves the right to make changes and to discontinue models without notice or obligation. Photography may show optional equipment or props used for decoration purposes only. RVs built for sale in Canada may differ to conform to Canadian codes. Starcraft and the S are registered trademarks of Jayco, Inc. Printed in U.S.A. 202202 2023