



CRESCENT CITY



LAKEPORT

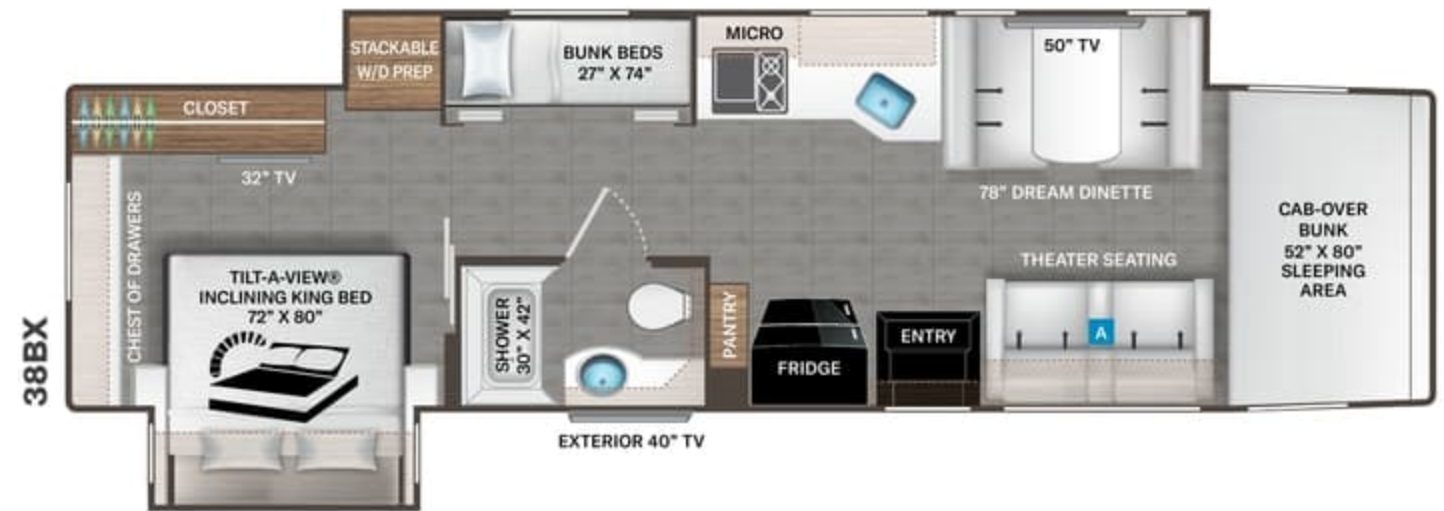


SANTA CRUZ

Standard



Optional



# PASADENA™

Options Available on  
Select Floor Plans:







CRESCENT CITY



LAKEPORT

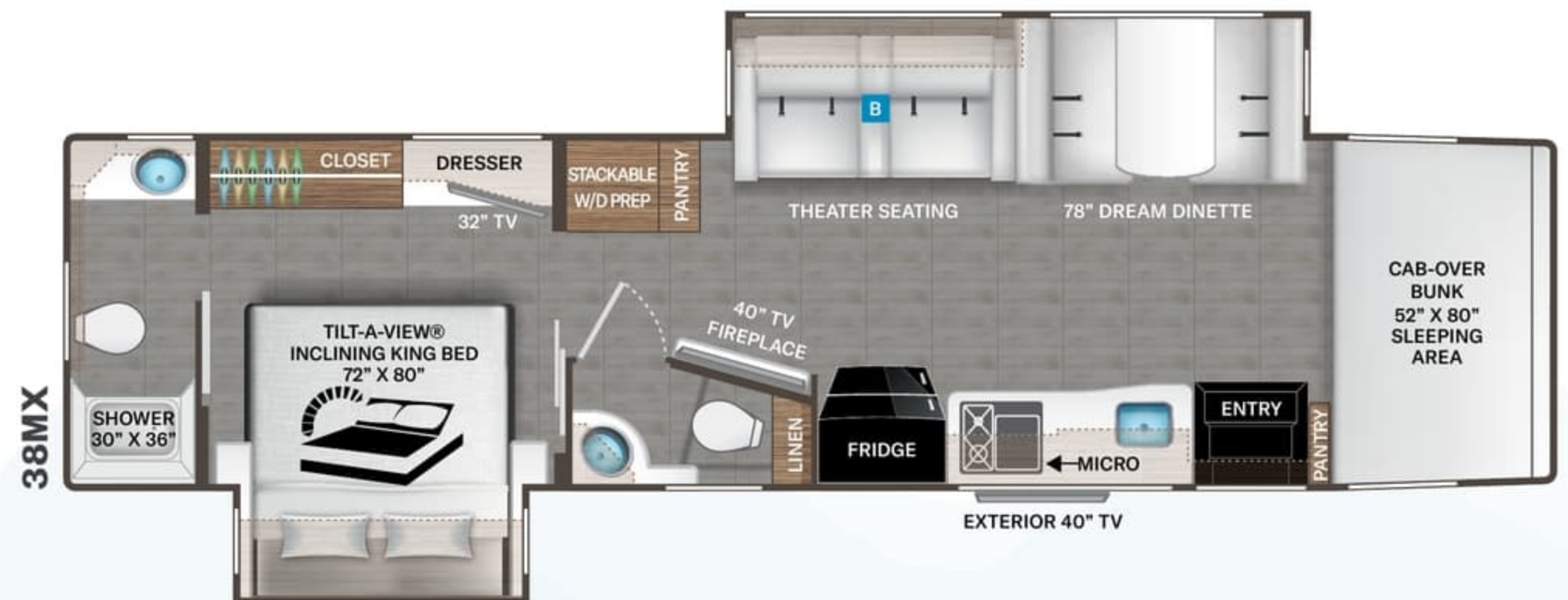
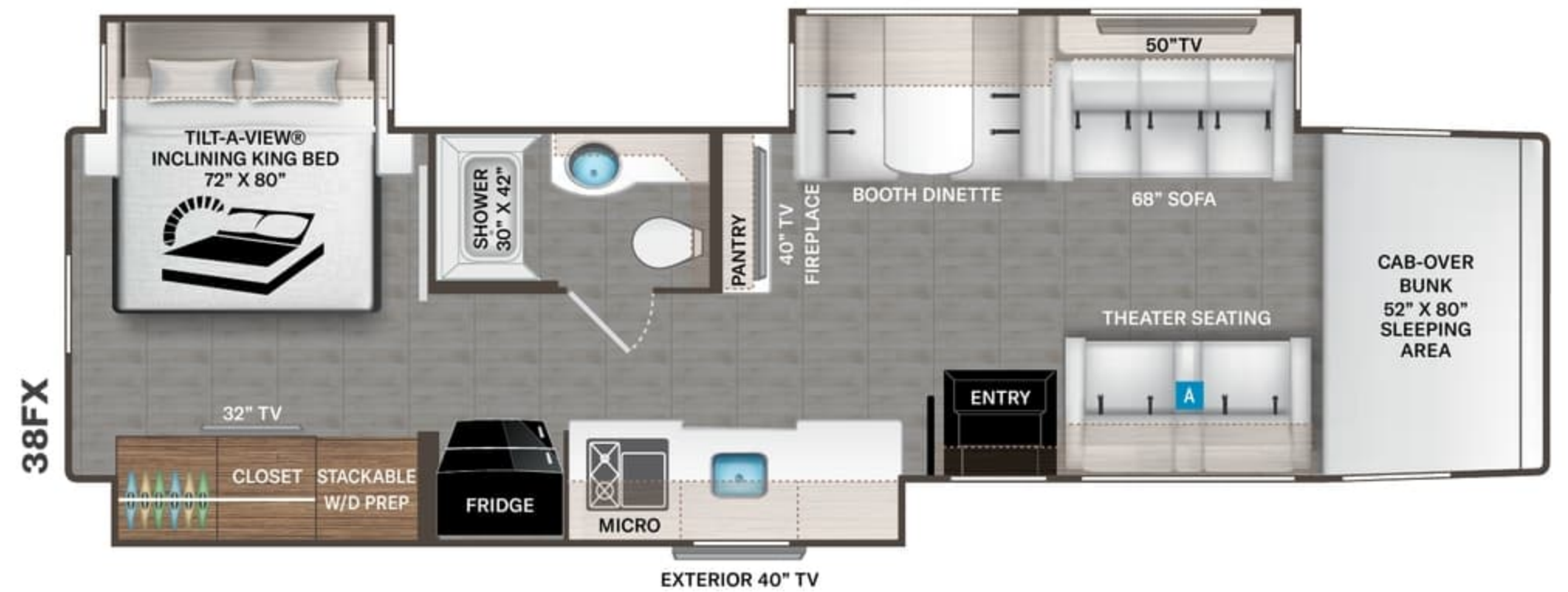
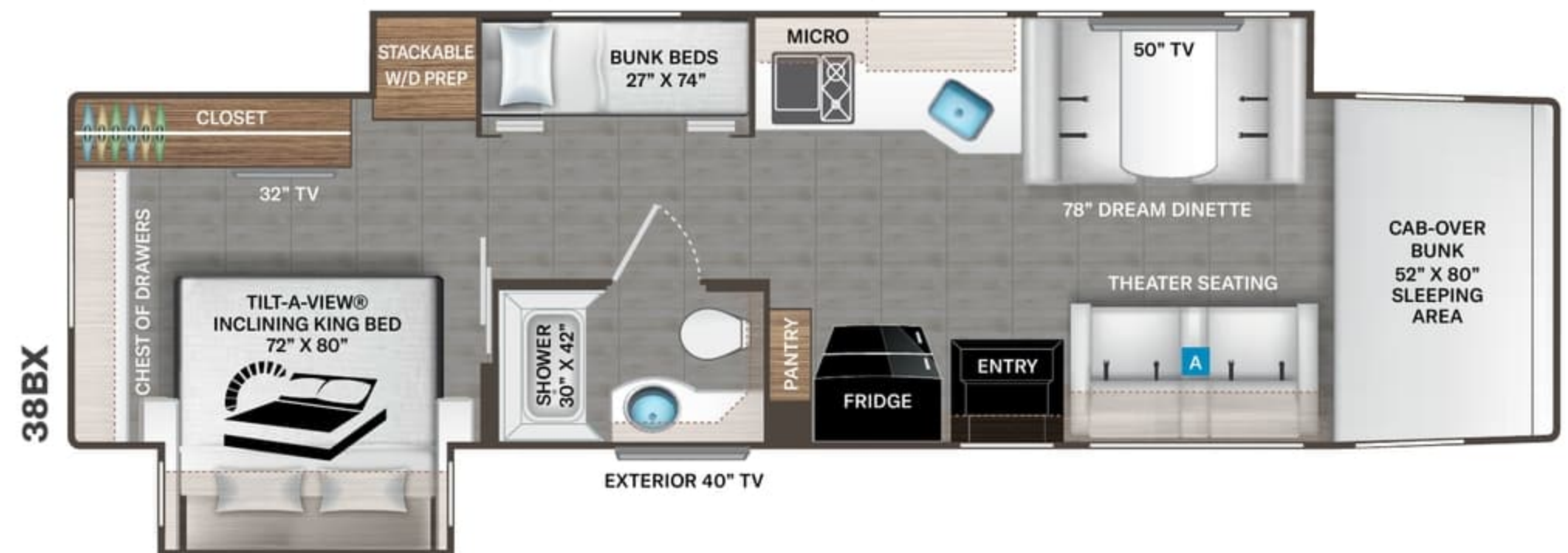


SANTA CRUZ

Standard



Optional



# PASADENA™

Options Available on Select Floor Plans:





# Featured Highlights

## CONSTRUCTION & EXTERIOR

- Freightliner® S2RV Chassis - Cummins® B6.7L / 360HP & 800 lb-ft Torque
- Welded Tubular Steel Floor
- Welded Tubular Aluminum Roof & Sidewall Cage Construction
- Premium One-Piece Roof
- Fiberglass Front & Rear Cap
- Full-Body Paint Package with Gel Coated Sidewalls
- Invisible Front Paint Protection
- Automatic Leveling Jacks with Touchpad Controls
- Rotocast Storage Compartments
- Basement Pass-Through Storage
- Side-Hinged Aluminum Compartment Doors
- Pet-Link™ Multi-Purpose Tie-Down
- Power Patio Awning with Integrated LED Lighting
- Power Entry Door Awning (38FX)
- Powered Sky View Shade in Cab Overhead
- Slideout Room Awnings
- Roof Ladder
- Electric Entry Step
- Automatic Courtesy Lights Over Cab Entry
- Frameless Dual Pane Windows

## AUTOMOTIVE & COCKPIT

- 10.1" Touchscreen Dash Radio with Bluetooth®, Apple CarPlay®/Android Auto® & Sirius/XM® Prep
- Heated/Remote Exterior Mirrors
- Side View Camera System
- Emergency Engine Start Switch
- Air Ride Adjustable Driver & Passenger Captain's Chairs with Center Arm Rests
- Power Windows & Door Locks

- Cruise Control
- Tilt & Telescoping Steering Wheel
- Map Light
- Drink Holders
- Fog Lamps
- All Weather Cab Floor Mats
- Privacy Curtain
- Cabover Sleeping Area
- Fiberglass Running Boards
- 295/75R Tires with 22.5" Aluminum Wheels

## INTERIOR

- Luxury Vinyl Tile
- 84" Interior Ceiling Height
- Soft Touch Vinyl Ceiling
- LED Lighting
- Ceiling Ducted Air Conditioning System
- Hardwood Veneer Paneling in Select Areas
- Satin Finish Cabinetry with Solid Wood Flat Panel Cabinet Doors & Nickel Finish Hardware
- Full Extension Metal Ball-Bearing Drawer Guides
- Lambrequin Window Treatments
- Window Privacy Roller Shades
- Leatherette Dream Dinette® Booth with Cup Holders
- Single Child Safety Tether in Dinette
- Passenger Seatbelts in Select Areas
- Pressed Laminate Countertops in Select Areas
- Leatherette Theater Seating with Footrests
- Leatherette Sofa Bed (38FX)
- Electric Fireplace with Remote Control (38FX & 38MX)

## INTERIOR OPTIONS

- Painted Cabinetry with Solid Wood Flat Panel Cabinet Doors & Nickel Finish Hardware
- Leatherette Sofa IPO Theater Seating

## KITCHEN

- Residential Refrigerator
- 2-Burner High-Output Gas Range with Single Induction Cooktop
- Stainless Steel 30" Over-the-Range Convection Microwave Oven
- Solid Surface Countertops & Sink Covers
- Kitchen Countertop LED Accent Lighting
- Decorative Tile Backsplash
- Stainless Steel Double Bowl Sink with Single Handle Faucet & Pull-Down Sprayer
- Pantry
- Waste Basket
- 12-volt High Capacity Power Vent with Cover

## BEDROOM & BATHROOM

- King Size Bed with Tilt-A-View® Inclining Bed Mechanism
- Designer Headboard, Bedspread & Pillow Shams
- Bedroom 110-volt Outlet on Inverter for CPAP Machine
- Bunk Beds Convert to Closet (38BX)
- Fiberglass Shower with Obscure Glass Door
- Skylight in Shower
- Stainless Steel Bathroom Sink
- Foot Flush Porcelain Toilet
- Power Bath Vent with Cover

## ENTERTAINMENT

- 50" TV in Living Area (38BX & 38FX)
- 40" LED TV in Living Area (38MX)
- Blu-Ray Player in Living Area
- Soundbar in Living Area
- 32" TV in Bedroom
- TV Prep in Bunk Beds (38BX)
- Tablet Holders and USB Charge Ports in Bunk Bed (38BX)
- Exterior 40" TV on Swivel Bracket with Bluetooth® Built-in Sound Bar and Radio
- HDMI Video Distribution
- Cable TV Ready
- Digital TV Antenna
- Winegard® Connect™ 2.0 WiFi / 4G / TV Antenna
- USB Charging Ports - Bedroom & Living Area

## ELECTRICAL & PLUMBING

- Onan® RV QD 8000 Diesel Generator
- Automatic Generator Start
- 50-amp Shoreline Power Cord
- Automatic Transfer Switch with Power Protection
- 1800-watt Inverter
- Dual 15,000 Roof Air Conditioners with Heat Pumps
- Four (4) Auxiliary House Batteries
- Battery Disconnect Switch
- 100-watt Solar Charging System with Solar Controller through Main Multiplex Control Panel
- Rapid Camp+® Multiplex Wiring Control System, WiFi Enabled and 7" Touchscreen
- Whole Coach Water Filtration System
- Tankless Water Heater

- Water Heater Bypass System
- Enclosed & Heated Holding Tanks
- Black Tank Flush System
- 360° Siphon® RV Holding Tank Vent Cap
- Exterior LP Connection
- Stackable Washer/Dryer Prep
- Outside Shower

For a complete listing of available features visit [thormotorcoach.com/pasadena](http://thormotorcoach.com/pasadena).

Use your phone's camera to find out more information.

Just scan the code!



	38BX	38FX	38MX
Chassis	Freightliner	Freightliner	Freightliner
Gross Vehicle (GVWR)	32,700	32,700	32,700
Gross Combined (GCWR)	TBD	TBD	TBD
Wheel Base	279"	279"	279"
Exterior Length (w/o ladder)	39'-10"	39'-10"	39'-10"
Exterior Height (w/AC)	13'-3"	13'-3"	13'-3"
Exterior Width (w/o mirrors)	101"	101"	101"
Interior Height (living area)	84"	84"	84"
Awning Size	17'	17'	17'
Fuel (gal)	100	100	100
LPG (lbs)	105	105	105
Fresh/Waste/Gray Water (gal)	100 / 40 / 41	100 / 40 / 40	100 / 40F - 40R / 40F - 40R
Water Heater (gal)	Tankless	Tankless	Tankless
Furnace (BTUs)	35,000	35,000	35,000
Exterior Storage Capacity (cu. ft.)	180	180	147
Hitch Weight Rating (lbs)	15,000	15,000	15,000



**IMPORTANT-PLEASE READ:** This brochure reflects product design, fabrication, material, components and specifications at the date of printing, which date is disclosed below. Please visit us online at [ThorMotorCoach.com](http://ThorMotorCoach.com) or consult with your selling dealership for the latest in standards, options, specification and technical information. Photographs in the brochure may depict optional equipment or may only be available in certain floor plans. Components, appliances and the chassis may have been manufactured in a calendar year before the vehicle's designated model year. All capacities are approximate. The actual length of the vehicle may differ from that indicated in the brochure due to variances in the manufacturing processes and/or installed components. All dry weights are based on standard model features and do not include optional features or equipment. Component part and appliance manufacturers issue limited warranties covering portions of the vehicle not covered under the limited warranty we issue. Copyright Thor Motor Coach, Inc. © MY 04/01/2022

P.O. Box 1486, Elkhart, IN 46515 Sales Department: 800.860.5658

[thormotorcoach.com/pasadena](http://thormotorcoach.com/pasadena)





# Featured Highlights

## CONSTRUCTION & EXTERIOR

- Freightliner® S2RV Chassis - Cummins® B6.7L / 360HP & 800 lb-ft Torque
- Welded Tubular Steel Floor
- Welded Tubular Aluminum Roof & Sidewall Cage Construction
- Premium One-Piece Roof
- Fiberglass Front & Rear Cap
- Full-Body Paint Package with Gel Coated Sidewalls
- Invisible Front Paint Protection
- Automatic Leveling Jacks with Touchpad Controls
- Rotocast Storage Compartments
- Basement Pass-Through Storage
- Side-Hinged Aluminum Compartment Doors
- Pet-Link™ Multi-Purpose Tie-Down
- Power Patio Awning with Integrated LED Lighting
- Power Entry Door Awning (38FX)
- Powered Sky View Shade in Cab Overhead
- Slideout Room Awnings
- Roof Ladder
- Electric Entry Step
- Automatic Courtesy Lights Over Cab Entry
- Frameless Dual Pane Windows

## AUTOMOTIVE & COCKPIT

- 10.1" Touchscreen Dash Radio with Bluetooth®, Apple CarPlay®/Android Auto® & Sirius/XM® Prep
- Heated/Remote Exterior Mirrors
- Side View Camera System
- Emergency Engine Start Switch
- Air Ride Adjustable Driver & Passenger Captain's Chairs with Center Arm Rests
- Power Windows & Door Locks

- Cruise Control
- Tilt & Telescoping Steering Wheel
- Map Light
- Drink Holders
- Fog Lamps
- All Weather Cab Floor Mats
- Privacy Curtain
- Cabover Sleeping Area
- Fiberglass Running Boards
- 295/75R Tires with 22.5" Aluminum Wheels

## INTERIOR

- Luxury Vinyl Tile
- 84" Interior Ceiling Height
- Soft Touch Vinyl Ceiling
- LED Lighting
- Ceiling Ducted Air Conditioning System
- Hardwood Veneer Paneling in Select Areas
- Satin Finish Cabinetry with Solid Wood Flat Panel Cabinet Doors & Nickel Finish Hardware
- Full Extension Metal Ball-Bearing Drawer Guides
- Lambrequin Window Treatments
- Window Privacy Roller Shades
- Leatherette Dream Dinette® Booth with Cup Holders
- Single Child Safety Tether in Dinette
- Passenger Seatbelts in Select Areas
- Pressed Laminate Countertops in Select Areas
- Leatherette Theater Seating with Footrests
- Leatherette Sofa Bed (38FX)
- Electric Fireplace with Remote Control (38FX & 38MX)

## INTERIOR OPTIONS

- Painted Cabinetry with Solid Wood Flat Panel Cabinet Doors & Nickel Finish Hardware
- Leatherette Sofa IPO Theater Seating

## KITCHEN

- Residential Refrigerator
- 2-Burner High-Output Gas Range with Single Induction Cooktop
- Stainless Steel 30" Over-the-Range Convection Microwave Oven
- Solid Surface Countertops & Sink Covers
- Kitchen Countertop LED Accent Lighting
- Decorative Tile Backsplash
- Stainless Steel Double Bowl Sink with Single Handle Faucet & Pull-Down Sprayer
- Pantry
- Waste Basket
- 12-volt High Capacity Power Vent with Cover

## BEDROOM & BATHROOM

- King Size Bed with Tilt-A-View® Inclining Bed Mechanism
- Designer Headboard, Bedspread & Pillow Shams
- Bedroom 110-volt Outlet on Inverter for CPAP Machine
- Bunk Beds Convert to Closet (38BX)
- Fiberglass Shower with Obscure Glass Door
- Skylight in Shower
- Stainless Steel Bathroom Sink
- Foot Flush Porcelain Toilet
- Power Bath Vent with Cover

## ENTERTAINMENT

- 50" TV in Living Area (38BX & 38FX)
- 40" LED TV in Living Area (38MX)
- Blu-Ray Player in Living Area
- Soundbar in Living Area
- 32" TV in Bedroom
- TV Prep in Bunk Beds (38BX)
- Tablet Holders and USB Charge Ports in Bunk Bed (38BX)
- Exterior 40" TV on Swivel Bracket with Bluetooth® Built-in Sound Bar and Radio
- HDMI Video Distribution
- Cable TV Ready
- Digital TV Antenna
- Winegard® Connect™ 2.0 WiFi / 4G / TV Antenna
- USB Charging Ports - Bedroom & Living Area

## ELECTRICAL & PLUMBING

- Onan® RV QD 8000 Diesel Generator
- Automatic Generator Start
- 50-amp Shoreline Power Cord
- Automatic Transfer Switch with Power Protection
- 1800-watt Inverter
- Dual 15,000 Roof Air Conditioners with Heat Pumps
- Four (4) Auxiliary House Batteries
- Battery Disconnect Switch
- 100-watt Solar Charging System with Solar Controller through Main Multiplex Control Panel
- Rapid Camp+® Multiplex Wiring Control System, WiFi Enabled and 7" Touchscreen
- Whole Coach Water Filtration System
- Tankless Water Heater

- Water Heater Bypass System
- Enclosed & Heated Holding Tanks
- Black Tank Flush System
- 360° Siphon® RV Holding Tank Vent Cap
- Exterior LP Connection
- Stackable Washer/Dryer Prep
- Outside Shower

For a complete listing of available features visit [thormotorcoach.com/pasadena](http://thormotorcoach.com/pasadena).

Use your phone's camera to find out more information.

Just scan the code!



	38BX	38FX	38MX
Chassis	Freightliner	Freightliner	Freightliner
Gross Vehicle (GVWR)	32,700	32,700	32,700
Gross Combined (GCWR)	TBD	TBD	TBD
Wheel Base	279"	279"	279"
Exterior Length (w/o ladder)	39'-10"	39'-10"	39'-10"
Exterior Height (w/AC)	13'-3"	13'-3"	13'-3"
Exterior Width (w/o mirrors)	101"	101"	101"
Interior Height (living area)	84"	84"	84"
Awning Size	17'	17'	17'
Fuel (gal)	100	100	100
LPG (lbs)	105	105	105
Fresh/Waste/Gray Water (gal)	100 / 40 / 41	100 / 40 / 40	100 / 40F - 40R / 40F - 40R
Water Heater (gal)	Tankless	Tankless	Tankless
Furnace (BTUs)	35,000	35,000	35,000
Exterior Storage Capacity (cu. ft.)	180	180	147
Hitch Weight Rating (lbs)	15,000	15,000	15,000



**IMPORTANT—PLEASE READ:** This brochure reflects product design, fabrication, material, components and specifications at the date of printing, which date is disclosed below. Please visit us online at [ThorMotorCoach.com](http://ThorMotorCoach.com) or consult with your selling dealership for the latest in standards, options, specification and technical information. Photographs in the brochure may depict optional equipment or may only be available in certain floor plans. Components, appliances and the chassis may have been manufactured in a calendar year before the vehicle's designated model year. All capacities are approximate. The actual length of the vehicle may differ from that indicated in the brochure due to variances in the manufacturing processes and/or installed components. All dry weights are based on standard model features and do not include optional features or equipment. Component part and appliance manufacturers issue limited warranties covering portions of the vehicle not covered under the limited warranty we issue. Copyright Thor Motor Coach, Inc. © MY 04/01/2022

P.O. Box 1486, Elkhart, IN 46515 Sales Department: 800.860.5658

[thormotorcoach.com/pasadena](http://thormotorcoach.com/pasadena)

