

WINNEBAGO



HIKE 100 FLEX

WINNEBAGO



HIKE 100 FLEX







Unplug and Unwind.

Ruggedly built, yet light enough to be towed by many SUVs, the HIKE 100 FLX is designed for extended off-grid stays, and provides a comfortable, well-designed base camp for any adventure.



Unplug and Unwind.

Ruggedly built, yet light enough to be towed by many SUVs, the HIKE 100 FLX is designed for extended off-grid stays, and provides a comfortable, well-designed base camp for any adventure.

The FLX Package Freedom to Camp Almost Anywhere.

The factory-designed, factory-installed and factory-backed FLX package is an integrated system of five technologies that allow you to camp in comfort for up to five days without electrical and water hook-ups.



Go Power!® 200-Watt Solar Panel

It all starts up top, where a 200-watt panel harnesses solar energy to charge the system. The FLX is also pre-wired for an additional portable panel.



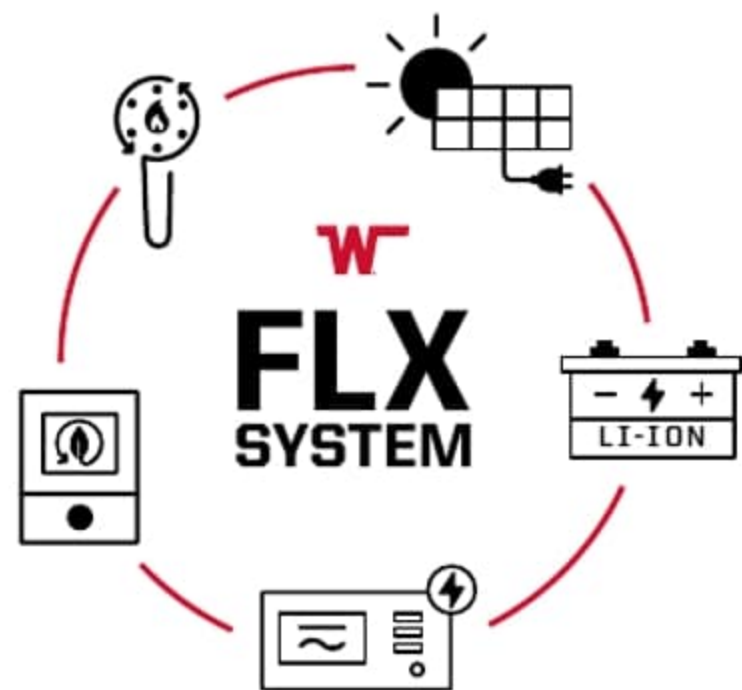
Lithionics Battery

The electricity from the panel flows through a 30-amp MPPT charge controller to the 320-amp-hour Lithionics® lithium-ion battery.



The FLX Package Freedom to Camp Almost Anywhere.

The factory-designed, factory-installed and factory-backed FLX package is an integrated system of five technologies that allow you to camp in comfort for up to five days without electrical and water hook-ups.



Go Power!® 200-Watt Solar Panel

It all starts up top, where a 200-watt panel harnesses solar energy to charge the system. The FLX is also pre-wired for an additional portable panel.



Lithionics Battery

The electricity from the panel flows through a 30-amp MPPT charge controller to the 320-amp-hour Lithionics® lithium-ion battery.





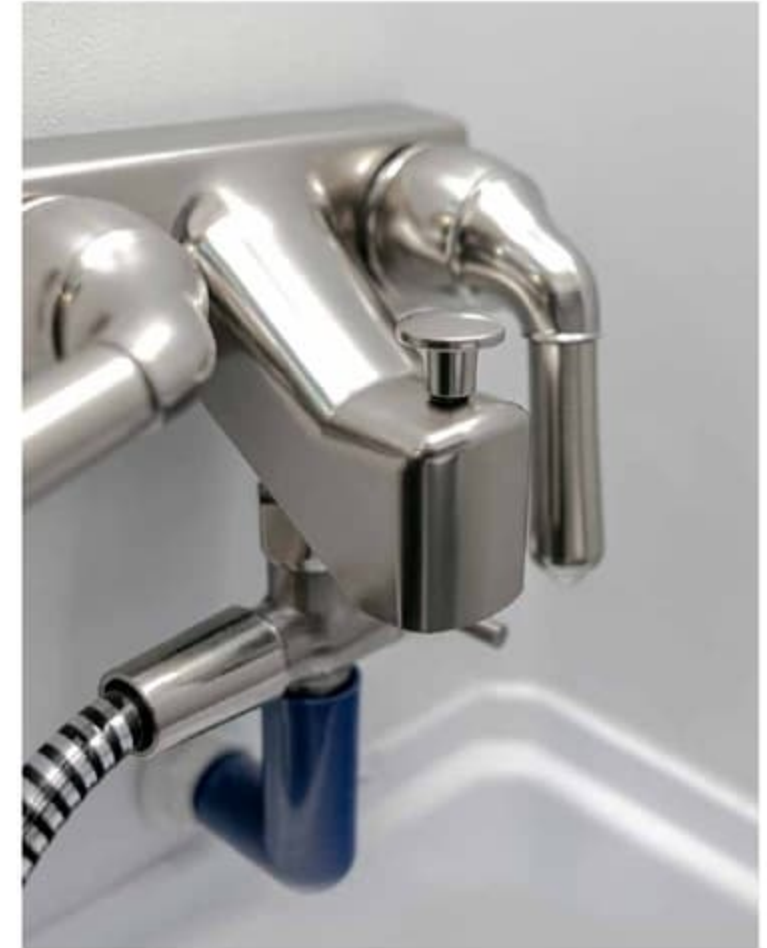
Xantrex Inverter

The 3000-watt Xantrex™ XC Pro pure sine wave inverter provides clean, quiet 110-volt AC current for household appliances, and allows you to lower the input amperage to match the campground current.



Truma Pieces

To further reduce energy use, the HIKE 100 FLX incorporates the ultra-efficient Truma® AquaGo® water heater, VarioHeat™ furnace and Aventa air conditioning system.



Showermiser

The Showermiser freshwater reclamation system provides hot water almost instantly, and recirculates the unused cold water to conserve water and support longer off-grid stays.





Xantrex Inverter

The 3000-watt Xantrex™ XC Pro pure sine wave inverter provides clean, quiet 110-volt AC current for household appliances, and allows you to lower the input amperage to match the campground current.



Truma Pieces

To further reduce energy use, the HIKE 100 FLX incorporates the ultra-efficient Truma® AquaGo® water heater, VarioHeat™ furnace and Aventa air conditioning system.



Showermiser

The Showermiser freshwater reclamation system provides hot water almost instantly, and recirculates the unused cold water to conserve water and support longer off-grid stays.





Floorplan Shown 1316TB



Floorplan Shown 1316TB



Smart Floorplans that Simply Work.

Lives Larger

The living area includes a wardrobe and interior cabinets to keep things organized and uncluttered, with a variety of sleeping options and sitting arrangements to choose from. The standard Wi-Fi prep, wireless cellphone charger, USB charge ports and portable JBL® speaker keep the juice and the tunes flowing.

This Galley Cooks

The full galley includes a refrigerator, sink, and convection/microwave oven, plus an induction cooktop — portable so you can cook outdoors when the occasion is right.

Wet Bath/Dry Gear

The wet bath includes a shower for cleaning up at the end of a long day, and doubles as a gear-drying area thanks to the power vent and integrated storage racks.





Smart Floorplans that Simply Work.

Lives Larger

The living area includes a wardrobe and interior cabinets to keep things organized and uncluttered, with a variety of sleeping options and sitting arrangements to choose from. The standard Wi-Fi prep, wireless cellphone charger, USB charge ports and portable JBL® speaker keep the juice and the tunes flowing.

This Galley Cooks

The full galley includes a refrigerator, sink, and convection/microwave oven, plus an induction cooktop — portable so you can cook outdoors when the occasion is right.

Wet Bath/Dry Gear

The wet bath includes a shower for cleaning up at the end of a long day, and doubles as a gear-drying area thanks to the power vent and integrated storage racks.



Epic Adventure
Starts Here.



Epic Adventure
Starts Here.





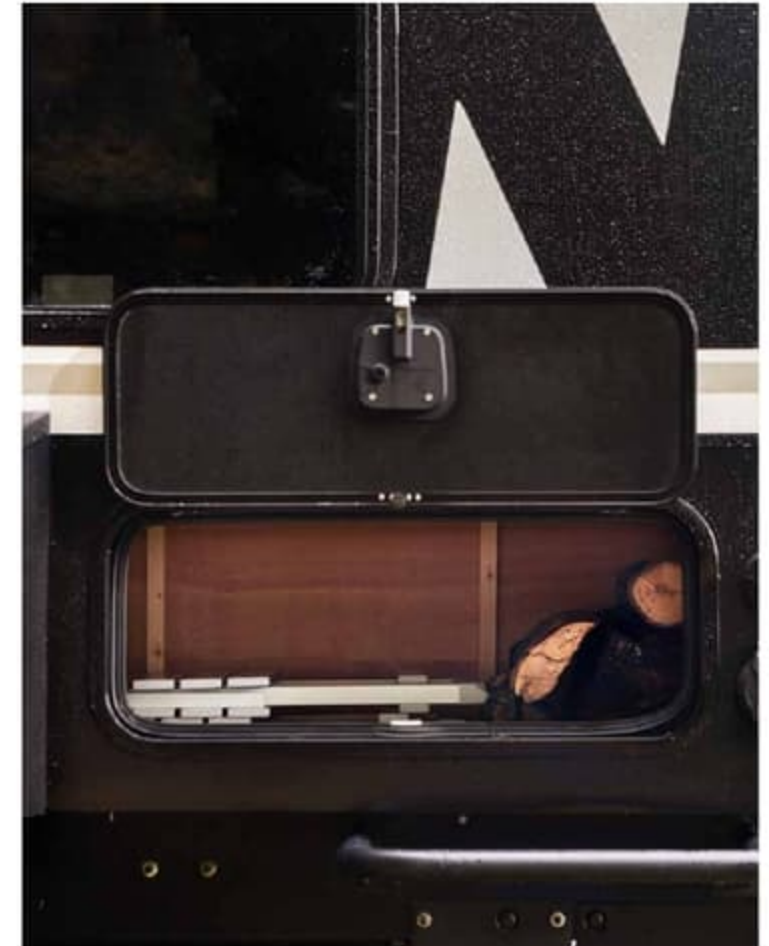
Fender Storage/Cooktop

Dual powder-coated fender storage compartments haul extra supplies or gear, and provide the perfect platform for a grill or the portable induction stove.



Off-Road Warrior

16" Goodyear® Wrangler off-road tires are mounted on aluminum wheels, and when the going gets tough, the BAL® Independent Suspension with Dexter® TORFLEX® Torsion stub axles smooths things out.



Hauls It All

Each floorplan includes innovative storage solutions inside and out, including a 2" hitch receiver that's perfect for a bike rack, and the patented exoskeleton framework that accepts Thule® and Yakima® accessories, making it easy to secure outdoor gear.



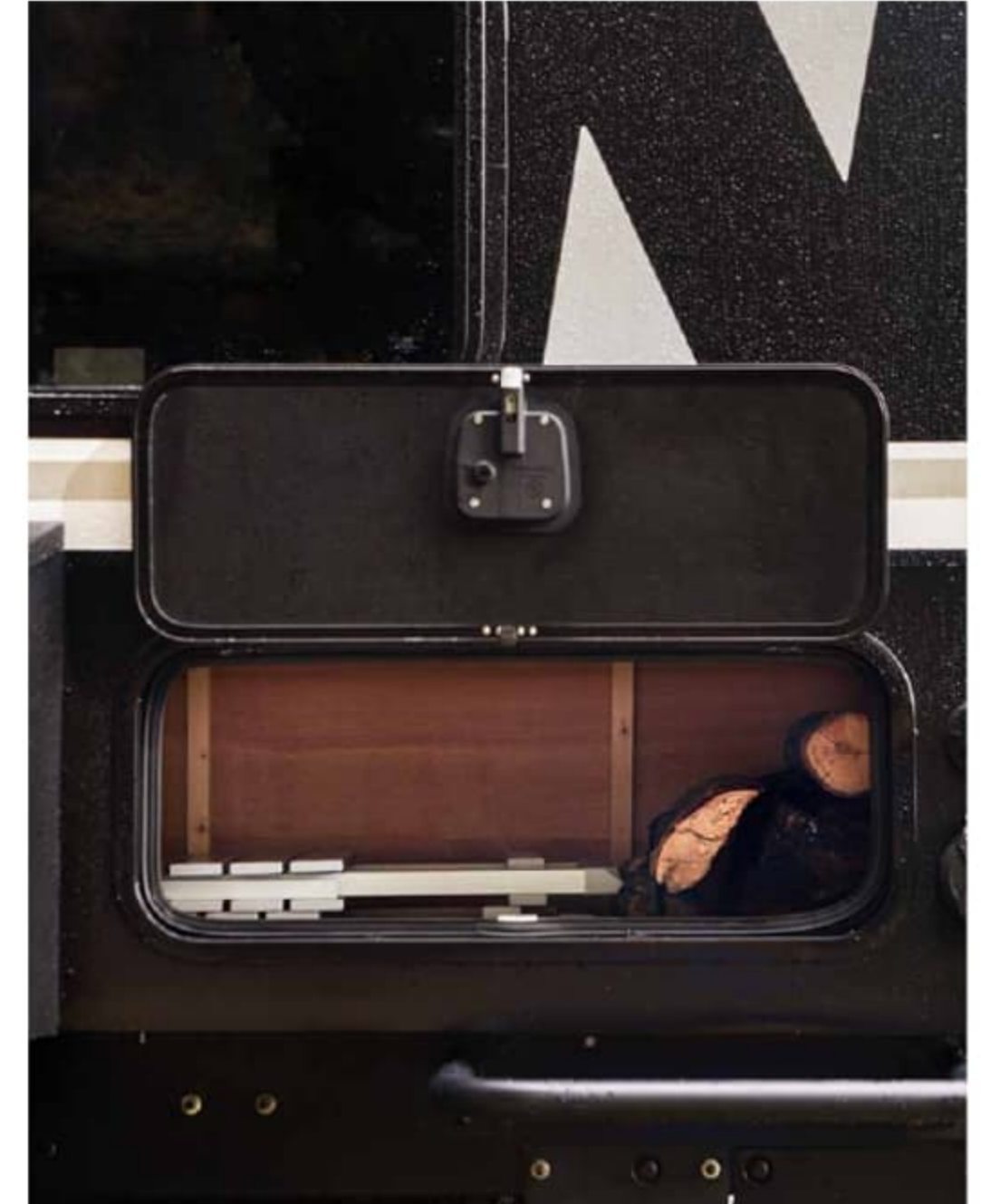
Fender Storage/Cooktop

Dual powder-coated fender storage compartments haul extra supplies or gear, and provide the perfect platform for a grill or the portable induction stove.



Off-Road Warrior

16" Goodyear® Wrangler off-road tires are mounted on aluminum wheels, and when the going gets tough, the BAL® Independent Suspension with Dexter® TORFLEX® Torsion stub axles smooths things out.



Hauls It All

Each floorplan includes innovative storage solutions inside and out, including a 2" hitch receiver that's perfect for a bike rack, and the patented exoskeleton framework that accepts Thule® and Yakima® accessories, making it easy to secure outdoor gear.

WINNEBAGO

HIKE 100 FLX / Specifications

WEIGHTS & MEASURES	1316SB	1316FB	1316TB	1316DB	1316MB
Exterior Length	15'11"	15'11"	15'11"	15'11"	15'11"
Exterior Height ¹	9'11"	9'11"	9'11"	9'11"	9'11"
Exterior Width ²	8'1"	8'1"	8'1"	8'1"	8'1"
Interior Height	6'5"	6'5"	6'5"	6'5"	6'5"
GVWR	4,200	4,200	4,200	4,200	4,200
Axles	1 @ 4,000	1 @ 4,000	1 @ 4,000	1 @ 4,000	1 @ 4,000
Dry Weight	TBD	TBD	TBD	TBD	TBD
Dry Hitch Weight	TBD	TBD	TBD	TBD	TBD
Hitch Height	28"	28"	28"	28"	28"
Freshwater Tank Capacity ³ (gal.)	31	31	31	31	31
Holding Tank Capacity - Black ³ (gal.)	4.75	4.75	4.75	4.75	4.75
Holding Tank Capacity - Gray 1 ³ (gal.)	25	25	25	25	25
Holding Tank Capacity - Gray 2 ³ (gal.)	N/A	N/A	N/A	N/A	N/A
Water Heater Capacity (gal.)	Tankless	Tankless	Tankless	Tankless	Tankless
LP Capacity ⁴ (lbs.)	20	20	20	20	20
Furnace (BTU)	11,500	11,500	11,500	11,500	11,500
Awning Length	10'	10'	10'	10'	10'
Tire Size	225/75R16E	225/75R16E	225/75R16E	225/75R16E	225/75R16E
Sleeps ⁵	4	3	4	3	2

Interior

- Molle panel
- Flip down table (Only applicable on 1316SB)
- TransCore fully composite flooring
- JBL portable Bluetooth® speaker
- Interior TV prep
- Folding table (Only applicable on 1316TB, 1316SB, and 1316MB)
- Designated wardrobe

Galley

- 1.1 cubic ft. convection microwave
- 3.3 cubic ft. 12-volt refrigerator
- Undermount single bowl stainless steel sink with cover
- Portable induction cooktop
- Pull out countertop extension
- Contemporary cabinet style

Bath

- Wet bath with power vent
- Integrated gear drying racks
- Cassette Toilet
- Cubby for dry storage

Bedroom

- Versatile sleeping arrangements
- Sleeps up to 4 adults depending on the floorplan

Exterior

- NXG engineered frame
- 2" thick FILON® MAX fiberglass sidewalls with Azdel Onboard® panels
- Fully walkable roof
- Side-mount ladder
- Premium Suspension Upgrade BAL

Independent Suspension with Dexter TorFlex torsion stub axles

- Goodyear Wrangler 16" off-road tires
- Aluminum wheel assemblies
- Goodyear Wrangler 16" spare tire
- Powered patio awning with LED lighting
- Manual rear and off-camp side batwing awning with drop-down panels for exterior shower
- Designated outdoor shower
- Power tongue jack
- Power stabilization jacks
- All LED exterior lighting with reverse lights integrated into brake lights
- Fully enclosed underbelly with radiant foil insulation
- Powder coated roof exoskeleton
- Powder coated fender gear boxes
- 2" accessory receiver hitch
- Lower nerf bars integrated into the frame

Exterior patio side LP quick connect Thick core slam latch baggage doors

- Outdoor kitchen (Only applicable on 1316FB and 1316DB)
- Portable Truma cooler (Only applicable on 1316FB and 1316DB)
- Protective metal front and side brush guard
- Quick connect spray port
- Patio side TV prep
- Rearview backup camera prep

Heating & Cooling System

- Truma VarioHeat furnace 11,500 BTU
- Truma low-profile Aventa A/C 13,500 BTU
- 20 lb. LP tank

Electrical System

- 200-watt solar panel with 30-amp MPPT charge controller
- Side mount solar prep for additional panel

WINNEBAGO

HIKE 100 FLX / Specifications

WEIGHTS & MEASURES	1316SB	1316FB	1316TB	1316DB	1316MB
Exterior Length	15'11"	15'11"	15'11"	15'11"	15'11"
Exterior Height ¹	9'11"	9'11"	9'11"	9'11"	9'11"
Exterior Width ²	8'1"	8'1"	8'1"	8'1"	8'1"
Interior Height	6'5"	6'5"	6'5"	6'5"	6'5"
GVWR	4,200	4,200	4,200	4,200	4,200
Axles	1@4,000	1@4,000	1@4,000	1@4,000	1@4,000
Dry Weight	TBD	TBD	TBD	TBD	TBD
Dry Hitch Weight	TBD	TBD	TBD	TBD	TBD
Hitch Height	28"	28"	28"	28"	28"
Freshwater Tank Capacity ³ (gal.)	31	31	31	31	31
Holding Tank Capacity - Black ³ (gal.)	4.75	4.75	4.75	4.75	4.75
Holding Tank Capacity - Gray 1 ³ (gal.)	25	25	25	25	25
Holding Tank Capacity - Gray 2 ³ (gal.)	N/A	N/A	N/A	N/A	N/A
Water Heater Capacity (gal.)	Tankless	Tankless	Tankless	Tankless	Tankless
LP Capacity ⁴ (lbs.)	20	20	20	20	20
Furnace (BTU)	11,500	11,500	11,500	11,500	11,500
Awning Length	10'	10'	10'	10'	10'
Tire Size	225/75R16E	225/75R16E	225/75R16E	225/75R16E	225/75R16E
Sleeps ⁵	4	3	4	3	2

Interior

Molle panel
 Flip down table (Only applicable on 1316SB)
 TransCore fully composite flooring
 JBL portable Bluetooth® speaker
 Interior TV prep
 Folding table (Only applicable on 1316TB, 1316SB, and 1316MB)
 Designated wardrobe

Galley

1.1 cubic ft. convection microwave
 3.3 cubic ft. 12-volt refrigerator
 Undermount single bowl stainless steel sink with cover
 Portable induction cooktop
 Pull out countertop extension
 Contemporary cabinet style

Bath

Wet bath with power vent
 Integrated gear drying racks
 Cassette Toilet
 Cubby for dry storage

Bedroom

Versatile sleeping arrangements
 Sleeps up to 4 adults depending on the floorplan

Exterior

NXG engineered frame
 2" thick FILON® MAX fiberglass sidewalls with Azdel Onboard® panels
 Fully walkable roof
 Side-mount ladder
 Premium Suspension Upgrade BAL

Independent Suspension with Dexter TorFlex torsion stub axles

Goodyear Wrangler 16" off-road tires

Aluminum wheel assemblies

Goodyear Wrangler 16" spare tire

Powered patio awning with LED lighting

Manual rear and off-camp side batwing awning with drop-down panels for exterior shower

Designated outdoor shower

Power tongue jack

Power stabilization jacks

All LED exterior lighting with reverse lights integrated into brake lights

Fully enclosed underbelly with radiant foil insulation

Powder coated roof exoskeleton

Powder coated fender gear boxes

2" accessory receiver hitch

Lower nerf bars integrated into the frame

Exterior patio side LP quick connect
 Thick core slam latch baggage doors

Outdoor kitchen (Only applicable on 1316FB and 1316DB)

Portable Truma cooler (Only applicable on 1316FB and 1316DB)

Protective metal front and side brush guard

Quick connect spray port

Patio side TV prep

Rearview backup camera prep

Heating & Cooling System

Truma VarioHeat furnace 11,500 BTU
 Truma low-profile Aventa A/C 13,500 BTU
 20 lb. LP tank

Electrical System

200-watt solar panel with 30-amp MPPT charge controller
 Side mount solar prep for additional panel



- Xantrex control panel
- GoPower! control panel
- Truma control panel
- Winnebago all-in-one control panel
- 320-amp-hour Lithium-ion battery
- 3,000-watt pure sine wave inverter
- 12-volt tank pad heaters with interior switch
- USB/ USBC charge ports
- Wi-Fi Prep integrated into King Omni Antenna
- Wireless cellphone charger
- Tire Pressure Monitoring System Prep

Plumbing System

- Truma Aqua-GO water heater
- Showermiser water reclamation system
- 31-gallon freshwater tank
- 4.75-gallon cassette toilet
- 25-gallon gray tank

Warranty

See your dealer for complete warranty information.

FOOTNOTES

- The height of each model is measured to the top of the tallest standard feature and is based on the curb weight of a typically equipped unit. The actual height of our vehicle may vary by several inches depending on chassis or equipment variations. Please contact your dealer for further information.
 - Floorplans feature a wide-body design - over 96-inches. In making your purchase decision, you should be aware that some states restrict access on some or all state roads to 96-inches in body width. Before making your purchase decision, you should confirm the road usage laws in the states of interest to you.
 - Capacities are based on measurements prior to tank installation. Slight capacity variations can result due to installation applications.
 - Capacities shown are tank manufacturer's listed water capacity (W.C.). Actual filled LP capacity is 80% of listing due to overfilling prevention device on tank.
 - Sleeping capacity is the maximum based on a specific floorplan. Because features, specification, equipment, and options may vary from those highlighted on this website, the buyer is responsible for confirming with the dealer the features, specifications, equipment, and options included in their specific vehicle.
- In addition, Winnebago's program of continuous product improvement may result in changes to vehicle specifications, equipment, model availability, and price without notice.

DECOR

Everglade



EXTERIORS



White

FLOORPLANS

1316SB



1316FB



1316TB



1316DB



1316MB



Dotted lines denote overhead storage area. Blue dashed lines denote sleeping areas. Floorplans are representations only and are subject to change. Please contact a certified Winnebago dealer for more information.



- Xantrex control panel
- GoPower! control panel
- Truma control panel
- Winnebago all-in-one control panel
- 320-amp-hour Lithium-ion battery
- 3,000-watt pure sine wave inverter
- 12-volt tank pad heaters with interior switch
- USB/ USBC charge ports
- Wi-Fi Prep integrated into King Omni Antenna
- Wireless cellphone charger
- Tire Pressure Monitoring System Prep

Plumbing System

- Truma Aqua-60 water heater
- Showermiser water reclamation system
- 31-gallon freshwater tank
- 4.75-gallon cassette toilet
- 25-gallon gray tank

Warranty

See your dealer for complete warranty information.

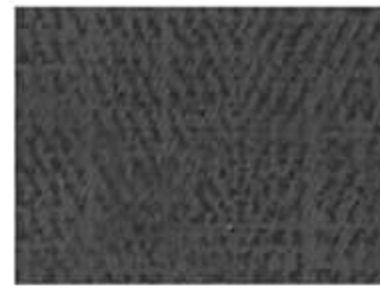
FOOTNOTES

- The height of each model is measured to the top of the tallest standard feature and is based on the curb weight of a typically equipped unit. The actual height of our vehicle may vary by several inches depending on chassis or equipment variations. Please contact your dealer for further information.
- Floorplans feature a wide-body design - over 96-inches. In making your purchase decision, you should be aware that some states restrict access on some or all state roads to 96-inches in body width. Before making your purchase decision, you should confirm the road usage laws in the states of interest to you.
- Capacities are based on measurements prior to tank installation. Slight capacity variations can result due to installation applications.
- Capacities shown are tank manufacturer's listed water capacity (W.C.). Actual filled LP capacity is 80% of listing due to overfilling prevention device on tank.
- Sleeping capacity is the maximum based on a specific floorplan. Because features, specification, equipment, and options may vary from those highlighted on this website, the buyer is responsible for confirming with the dealer the features, specifications, equipment, and options included in their specific vehicle.

In addition, Winnebago's program of continuous product improvement may result in changes to vehicle specifications, equipment, model availability, and price without notice.

DECOR

Everglade



Fabric

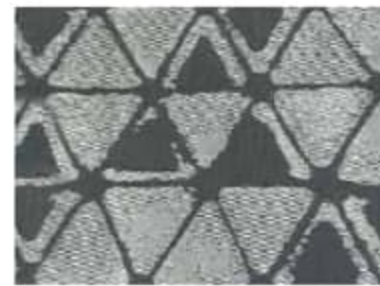


Wall Board



Cabinetry

Accent



Bedsread



Countertop



Flooring

EXTERIORS



White

FLOORPLANS

1316SB



1316FB



1316TB



1316DB



1316MB



Dotted lines denote overhead storage area. Blue dashed lines denote sleeping areas. Floorplans are representations only and are subject to change. Please contact a certified Winnebago dealer for more information.

QUALITY

Winnebago RVs are designed and built around you, with superior craftsmanship, advanced manufacturing technologies and steel-focused construction to enhance safety and reliability.

INNOVATION

From groundbreaking RVs to game-changing features to the spacious floorplans made possible by our SmartSpace™ design, our heritage is unrivaled for continuous industry firsts in vehicle technology and design.

SERVICE

Our carefully chosen dealers are supported by factory training and our advanced parts supply system, while owners benefit from excellent real-world customer support as well as 24/7 access to online technical information.

WINNEBAGO.



QUALITY

Winnebago RVs are designed and built around you, with superior craftsmanship, advanced manufacturing technologies and steel-focused construction to enhance safety and reliability.

INNOVATION

From groundbreaking RVs to game-changing features to the spacious floorplans made possible by our SmartSpace™ design, our heritage is unrivaled for continuous industry firsts in vehicle technology and design.

SERVICE

Our carefully chosen dealers are supported by factory training and our advanced parts supply system, while owners benefit from excellent real-world customer support as well as 24/7 access to online technical information.

WINNEBAGO.

