

CONCORD

Coachmen

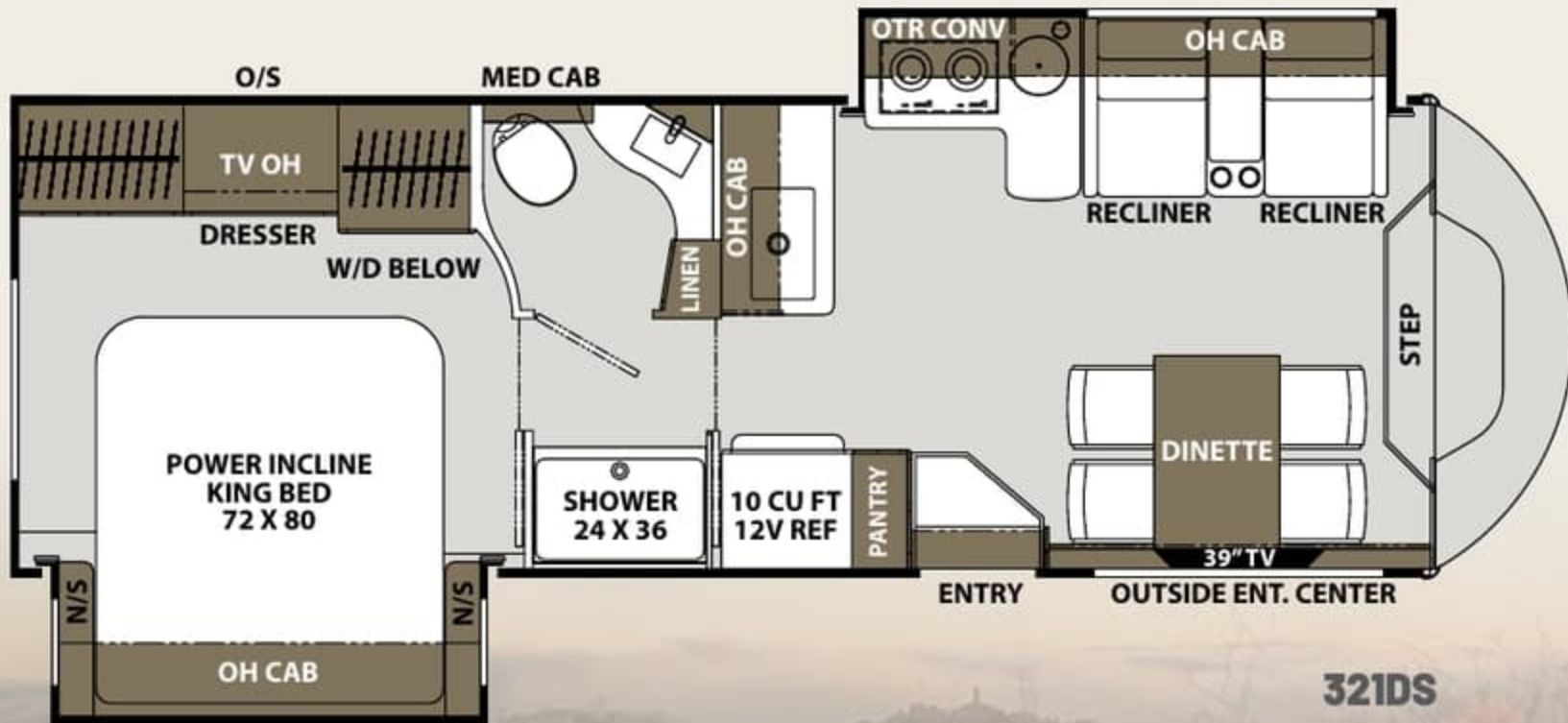
FULL BODY PAINT OPTIONS



Gold Rush



Sapphire



321DS

SPECIFICATIONS

	321DS
CHASSIS	FORD E450
ENGINE	V8 7.3L
HORSE POWER	325
TORQUE	468
WHEEL BASE	223"
GVWR (LBS.)	14,500
GCWR (LBS.)	22,000
UVW (APPROX. LBS.)	13,600
CCC (APPROX. LBS.)	1,200
GAWR FRONT (LBS.)	5,000
GAWR REAR (LBS.)	9,600
INTERIOR HEIGHT	6' 8"
EXTERIOR HEIGHT	10' 11"
EXTERIOR WIDTH	8' 4"
EXTERIOR LENGTH (WITH HITCH)	32' 9"
HITCH WEIGHT (LBS.)	7,500
FUEL CAPACITY (GAL.)	55
LP CAPACITY (LBS.)	68
FRESH WATER CAPACITY (GAL.)	48
WATER HEATER CAPACITY	TANKLESS
GREY TANK CAPACITY (GAL.)	34
BLACK TANK CAPACITY (GAL.)	31
EXTERIOR STORAGE (CU. FT.)	105
AWNING LENGTH (FT.)	15

GVWR (Gross Vehicle Weight Rating) is the maximum permissible weight of the unit when fully loaded. It includes all weights, inclusive of all fluids, occupants, cargo, optional equipment and accessories. For safety and product performance do NOT exceed the GVWR.

GCWR (Gross Combined Weight Rating) is the maximum permissible loaded weight of your motor home and any towed trailer or towed vehicle. Actual GCWR of this vehicle may be limited by the sum of the GVWR and the installed hitch receiver maximum capacity rating; see hitch rating label for detail.

GAWR (Gross Axle Weight Rating) is the maximum permissible weight, including cargo, fluids, optional equipment and accessories that can be safely supported by each axle.

UVW (Unloaded Vehicle Weight)* is the typical weight of the unit as manufactured at the factory. It includes all weight at the unit's axle(s), including full fuel, all fluids and LP Gas. The UVW does not include cargo, fresh potable water, additional optional equipment or dealer installed accessories.

*Estimated Average based on standard build optional equipment.

CCC (Cargo Carrying Capacity)** is the amount of weight available for fresh potable water, cargo, passengers, additional optional equipment and accessories. CCC is equal to GVWR minus UVW. Available CCC should accommodate fresh potable water (8.3 lbs per gallon). Before filling the fresh water tank, empty the black and gray tanks to provide for more cargo capacity.

** Estimated average based on standard build optional equipment

Each Coachmen motorhome is weighed at the manufacturing facility prior to shipping. A label identifying the unloaded vehicle weight of the actual unit and the cargo carrying capacity is applied to every Coachmen motorhome prior to leaving our facilities.

The load capacity of your unit is designated by weight, not by volume, so you cannot necessarily use all available space when loading your unit.

Actual towing capacity is dependent upon your particular loading and towing circumstances, which includes the GVWR, GAWR and GCWR as well as adequate trailer brakes. Please refer to the Operator's Manual of your vehicle for further towing information.

KEY FEATURES

- **Two Full Body Paint Options with Fiberglass Running Boards and Aluminum Wheels**
- **50 Amp Service Coach with Electric Power Reel**
- **Dual 15,000 BTU A/C's with Heat Pumps**
- **Auto Flex Rear Air - Ride Suspension**
- **Molded Front Fiberglass Cap with Oversized Window**
- **Molded Rear Fiberglass Cap with Backup Proximity Sensors**
- **Aqua View Showermiser and Tankless Water Heater**
- **2-Burner Induction Cooktop and Residential Convection Microwave**

CUSTOMER SATISFACTION



www.ForestRiverBuyLocal.com

**24/7 EMERGENCY
ROADSIDE ASSISTANCE
WITH VEHICLE PURCHASE***

TOWING	WINCH-OUT
JUMP-STARTS	MOBILE MECHANIC
TIRE CHANGES	TECHNICAL
FLUID DELIVERY	SUPPORT
LOCKOUT SERVICE	DEALER LOCATOR SERVICES



*VALID FOR 1 YEAR FROM DATE OF PURCHASE



COA

COACHMEN OWNERS ASSOCIATION

FREE MEMBERSHIP

www.coachmenowners.com

YOUR CONCORD DEALER



Learn More
Scan this barcode using a QR Reader on your smart phone to learn more about Forest River.



A Berkshire Hathaway company.



SCAN HERE
For more available Standards, Options and Features!



Coachmen
Leader to the Great Outdoors.

Coachmen RV, a Division of Forest River, Inc.,
A Berkshire Hathaway Company

423 N. Main St., P.O. Box 30, Middlebury, IN 46540

To learn more about Coachmen RV and our products and see how Coachmen is making the easy life easier, visit www.coachmenrv.com

All information contained in this brochure is believed to be accurate at the time of publication. However, during the model year, it may be necessary to make revisions and Coachmen reserves the right to make all such changes without notice, including prices, colors, materials, equipment and specifications as well as the addition of new models and the discontinuance of models shown in this brochure. Therefore, please consult with your Coachmen dealer and confirm the existence of any materials, design or specifications that are material to your purchase decision. 09/23
©Copyright 2023 Coachmen RV a Division of Forest River Inc - All Rights Reserved.