

2024 ENTEGRA COACH EXPANSE

# ExpansE

GAS CLASS B MOTORHOME



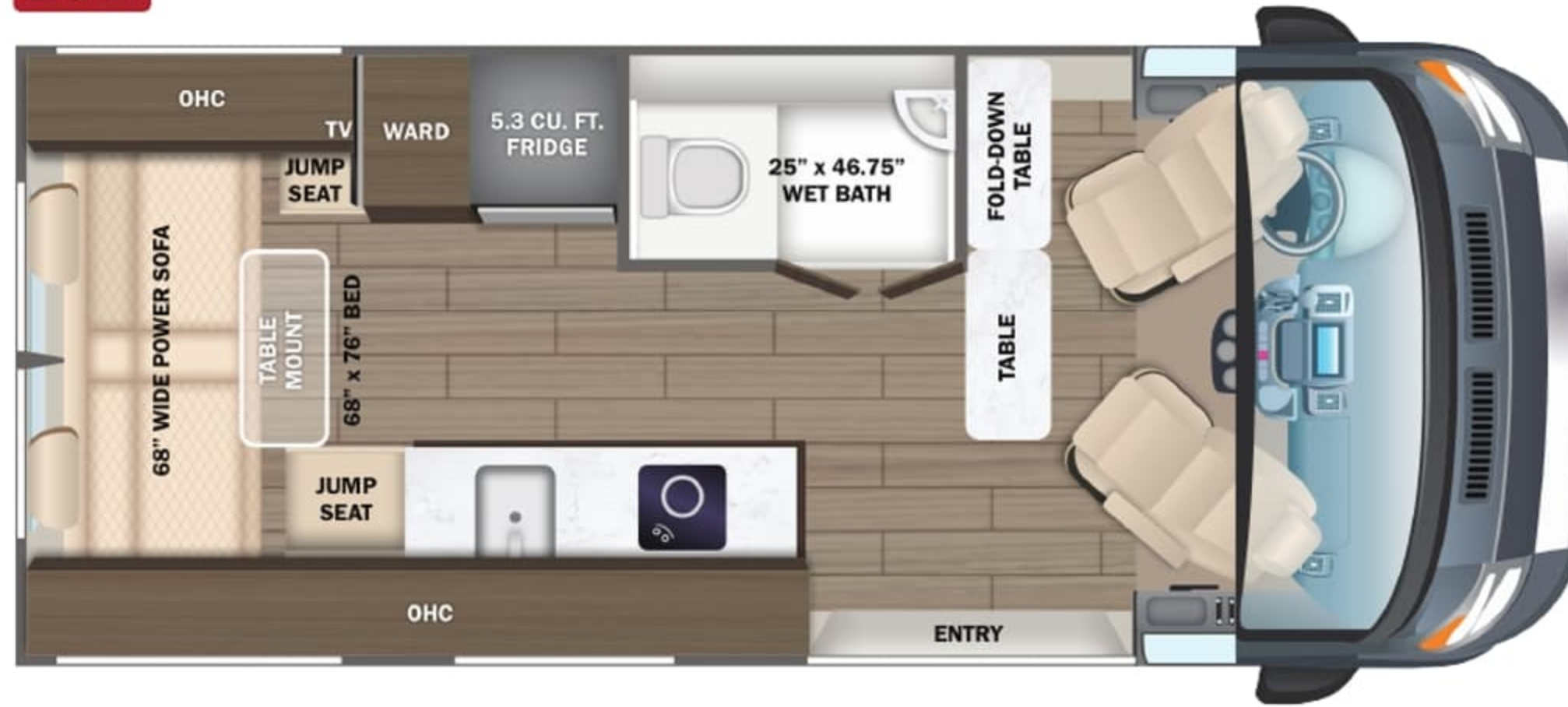
**ENTEGR**A  
COACH®







21B



## EXTERIOR



## CUSTOMER VALUE PACKAGE

- E-Z Drive™: Hellwig® helper springs, rear Koni® shocks
- Carefree® armless motion sensing patio awning with LED light strip
- Truma Combi Eco Plus water heater and furnace
- 4-way swivel driver and passenger seats
- Winegard® Connect 2.0 4G/Wi-Fi/digital TV antenna

## CHASSIS

- Ford® Transit AWD 350HD
- 148 in. wheelbase
- GVWR - 11,000 lb.
- GCWR - 13,000 lb.
- 3.5L EcoBoost V6 310 HP engine with 400 ft.-lb. torque
- 10-speed transmission
- 3.73 limited slip axle
- 250-amp alternator
- 205/75R16C BSW all-season tires
- Aluminum wheels
- Heavy-duty trailer tow package with dual 4/7 pin connector
- (2) 12V AGM chassis batteries (70 amp-hr)
- 25 gal. fuel tank (gas)

## EXTERIOR

- Fiberglass running boards for cab and entry doors
- Keyless entry pad
- Daytime running headlamps
- Cable TV hookup with RG-6 coax
- Onan® 2,800W generator with auto-gen start
- 200W roof-mounted GoPower® solar panel with integrated control panel
- Portable solar plug
- 1,000W inverter
- (2) 12V AGM house batteries
- House battery disconnect switch
- 30-amp electrical service with detachable power cord
- (2) 120V exterior outlets
- 6 gal. propane tank (20 lb.)
- LP quick-connect hookup
- Heated grey holding tank (12V pad)
- LED-lit holding tank valves
- Black tank flush
- Winterization drain system
- 12V demand water pump
- Water filtration system
- Outside shower

## COCKPIT

- 12 in. SYNC 4 HD/NAV/IACC multi-function display
- Power-adjusting side-view mirrors
- 360° camera with split view and front camera washer
- Rear-view camera with trailer hitch assist

- Backup camera displayed in rear-view mirror
- Blind spot assist 1.0 with trailer coverage and cross-traffic alert
- Intelligent adaptive cruise control
- Lane-keeping system
- Front, side and reverse sensing systems
- Forward collision warning
- Pre-collision assist with automatic emergency braking (AEB)
- Post-collision braking
- SOS Post Crash Alert System™
- Driver and passenger airbags
- Safety Canopy® side-curtain airbags
- Ford® AdvanceTrac® with RSC® (roll stability control)
- Side wind stabilization
- Hill start assist
- SecuriLock® passive anti-theft system with engine immobilizer
- Autolocking drive away with crash unlocking
- Remote keyless entry
- FordPass™ Connect
- Tire pressure monitoring system (TPMS)
- Rain-sensing wiper system
- Automatic high-beam headlights
- Wiper-activated headlights
- Power windows and door locks
- Privacy shades for cab windows

## INTERIOR

- Custom-molded ABS interior wall panels
- Soft-touch vinyl ceiling
- High-intensity LED ceiling lights
- Tecnoform® European-style, high-gloss cabinetry
- Ball-bearing drawer guides
- Residential vinyl flooring
- Firefly Multiplex system - wall-mounted touchscreen and mobile app for total coach control
- 120V Coleman®-Mach® 10 13,500 BTU air conditioner
- Powered roof vent in living area
- Side screen door with magnetic and zipper close offs
- Sliding vented windows
- Rear screen door with roll-up and black-out capabilities
- Removable privacy shade for sliding door window
- 24 in. LED HD TV
- JBL® Flip 5 removable wireless Bluetooth speaker
- Adjustable table with multiple mounts and fold-down work station
- 5.3 cu. ft. 12V refrigerator
- 2-burner gas cooktop
- Convection microwave
- Stainless steel sink
- Solid-surface kitchen countertop
- Power sofa converts to 68 in. x 76 in. bed
- Shower with magnetic curtain surround
- Aqua View® SHOWERMISER™ water management system
- Toilet with foot flush

- Medicine cabinet with mirror
- Powered roof vent in bathroom
- Seatbelts for driver/passenger seats and select cab locations
- Smoke alarm
- Carbon monoxide detector
- Fire extinguisher

## OPTIONS

- Starlink satellite internet system

### Li Package

- 48V-210 amp hour smart lithium battery providing 10KW hours of power IPO 2,800W generator (2) 12V AGM house batteries
- Auto engine start with high idle
- 3,500W inverter IPO 1,000W inverter
- 2nd 48V alternator dedicated to lithium battery
- Trickle charge solar panel for chassis battery
- Timberline hydronic heating system IPO Truma Combi Eco Plus water heater and furnace
- 48V Coleman®-Mach® 10 13.5K BTU air conditioner IPO 120V Coleman®-Mach® 10 13.5K BTU air conditioner
- 1-burner induction cooktop IPO 2-burner gas cooktop
- No propane - all-electric coach

## WARRANTY



At Entegra Coach, we build our RVs to handle every adventure, then back them with an outstanding warranty. Our 2-year limited warranty has you covered for 2 camping seasons. That's 730 days. For a copy of our 2-year limited warranty with complete terms and conditions, please contact your local Entegra Coach dealer.

Floorplan	GVWR (lbs.)	GCWR (lbs.)	Wheel Base	Overall Length	Exterior Height w/ A/C & Satellite	Exterior Width	Interior Height	Fresh Water Capacity (gal.)	Grey Waste Water Capacity (gal.)	Black Waste Water Capacity (gal.)
21B	11,000	13,000	148	22'	10'	86"	78"	24	14	16

It is important for your safety and enjoyment that you are aware of the weights and tow ratings of the RV you select. Consult a competent advisor for questions or advice. Whether you are new to RVing or a veteran, get a feel for the performance of your RV before heading out on the roadways. When you tow a vehicle with your RV, you must drive differently than when you drive a single vehicle. Practice hooking up, driving, backing up and braking in a safe environment or seek out professional instruction. Jayco affixes a weight label to each RV which lists weight information for that vehicle. Refer to that label to verify the vehicle will meet your requirements. Gross Vehicle Weight Rating (GVWR): The maximum permissible weight of the motorhome, including the Unloaded Vehicle Weight (UVW) plus passengers, personal items, all cargo, fluids, options and dealer-installed accessories. The GVWR is equal to or greater than the sum of the UVW and the Cargo Carrying Capacity. Gross Combined Weight Rating (GCWR): The maximum allowable combined weight of the motorhome used as a tow vehicle and the attached towed vehicle.



Part of Jayco Family of Companies

Entegra Coach, Inc., P.O. Box 460, Middlebury, IN 46540, www.entegracoach.com. See dealer for further information and prices. All information in this brochure is the latest available at the time of publication approval. Entegra Coach reserves the right to make changes and to discontinue models without notice or obligation. Photos in this brochure may show optional equipment and props for photography purposes. RVs built for sale in Canada may differ to conform to Canadian codes. ©2023 Entegra Coach, Inc. Printed in U.S.A. 2032821.2024



entegracoach.com/expanses