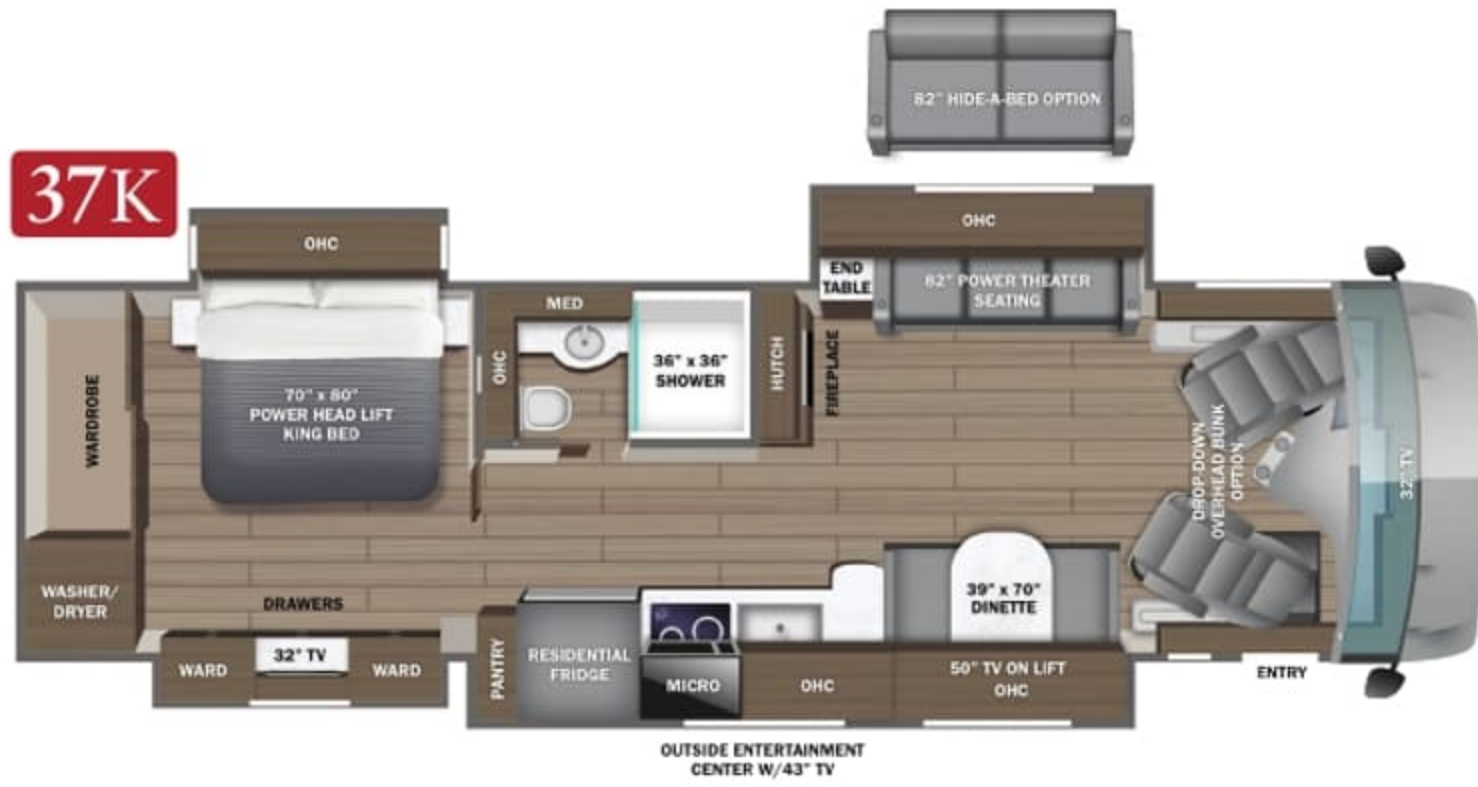
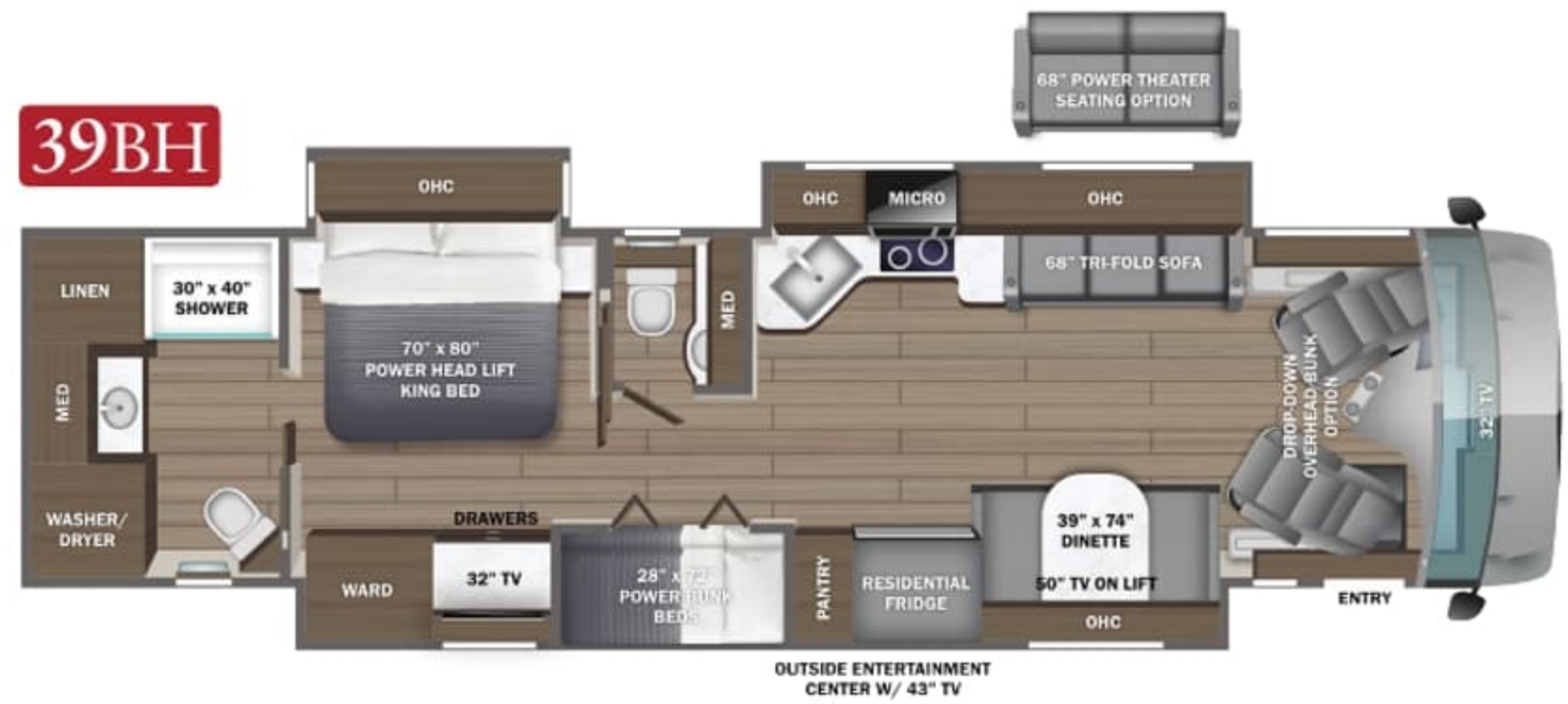


# 2024 REATTA XL

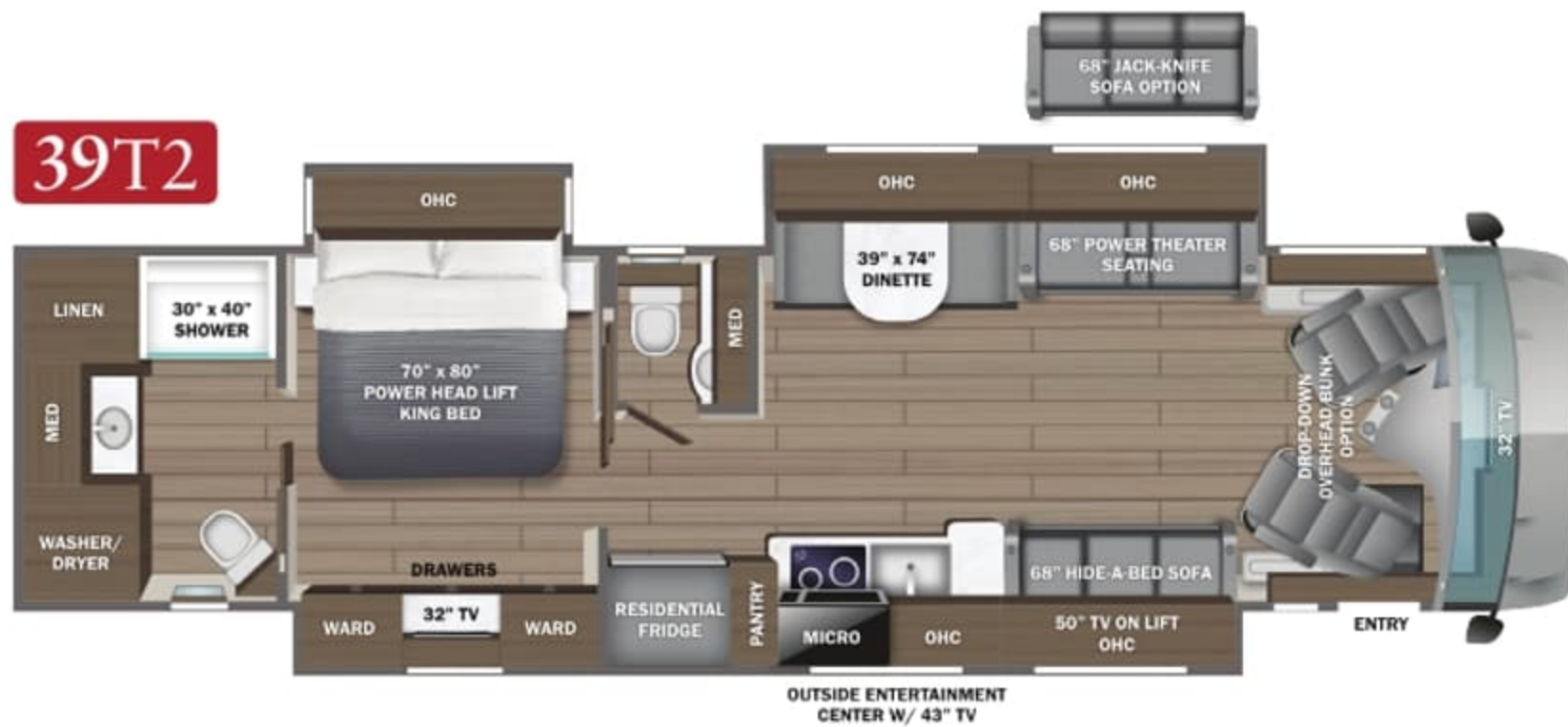
**37K**



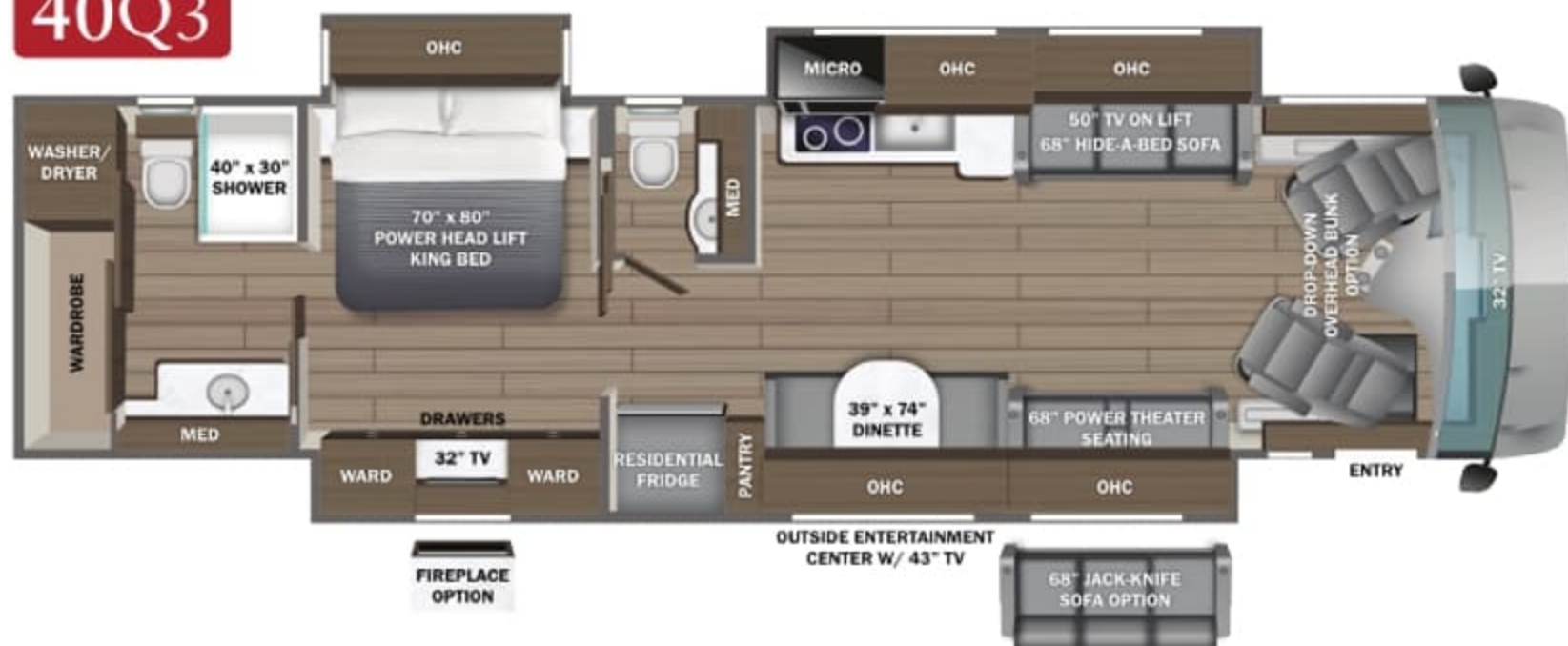
**39BH**



**39T2**



**40Q3**



## PAINT SELECTIONS



Blue Pearl



Brandywine



Rio Red



Sahara Dunes

# REATA XL

# Standards & Options

## CHASSIS

Spartan® K2 raised-rail chassis  
 Cummins® L9 turbocharged 380 HP engine with 1,150 lb.-ft. torque at 1,400 RPM  
 Allison® 3,000 MH 6-speed transmission  
 Rear-mounted radiator  
 170 amp alternator  
 1,000W engine block heater  
 Variable geometry turbo (VGT) engine brake  
 Independent front air suspension (IFS) front axle - 14,320 lb. rating  
 Rear axle - 22,000 lb. rating  
 4.88 rear axle ratio  
 Michelin® 275/80R 22.5 in. tires  
 Bilstein® 46mm shocks  
 Wireless tire pressure monitoring system (TPMS) with temperature monitoring  
 Equalizer™ hydraulic automatic coach leveling  
 Remote air connection  
 (2) 12V chassis batteries  
 100 gal. fuel tank  
 10 gal. DEF tank  
 Spartan® Safehaul tow vehicle air brake system  
 10,000 lb. hitch with 7-pin plug

Aqua-Hot® 250D hydronic water and heating system with 5 in. LED screen  
 Electric radiant floor heating system  
 LED-lit fireplace with 5,000 BTU heating element (37K only)  
 Sani-Con® macerator holding tank dump system with manual gate valves and manual backup  
 Black holding tank sprayer  
 City and tank water filtration system

Steering wheel with integrated controls for cruise, wipers, radio and Bluetooth® phone functionality  
 Manual tilt and telescoping steering column  
 Ultra-Vision® one-piece wrap-around tinted windshield  
 32 in. Samsung® LED 1080P Smart TV in front overhead  
 6-way power adjustable driver and passenger seats with power recline  
 Powered flush stepwell cover  
 Powered adjustable brake and accelerator pedals  
 Powered front sun visors and privacy shades

Carbon monoxide detector  
 Smoke alarm  
 Storage safe

## OPTIONS

Canadian standards (CSA)  
 Theater seating with power recliners (39BH)  
 Theater seating with power recliners  
 34 in. bedroom fireplace (40Q2)  
 Winegard® in-motion satellite dome  
 Winegard® TRAV'LER satellite dish Dish Network®  
 Drop-down overhead bunk in cab area with 750 lb. capacity

## EXTERIOR

Carefree® power patio awning with LED lights  
 Carefree® power entrance door awning with LED lights  
 Carefree® slideout awnings  
 Carefree® window awnings  
 Frameless, dual-pane, tinted, safety-glass windows  
 Grab handle and keypad system for keyless entry  
 43 in. Samsung® 4K UHD Smart TV with tilt, swivel, and extend adjustment  
 JBL® radio and speakers with USB port and receptacle  
 Heated, remote-control, side-view mirrors with integrated cameras  
 Diamond Shield™ front protective film mask  
 Halogen high and low beam headlights and fog lights  
 Daytime running lights  
 LED marker lights, turn lights, license plate light, third brake light, accent lights and docking lights  
 Porch light  
 Mudflap with chrome "Entegra" nameplate  
 Winegard® TRAV'LER satellite dish DIRECTV® - standard with USA option  
 Winegard® TRAV'LER satellite dish Shaw TV - standard with CSA option  
 Winegard Connect 2.0 Wi-Fi/4G antenna  
 Exterior utility center  
 Slideout basement storage tray  
 Sikkens custom full-body paint

## INTERIOR

Firefly multiplex system with 10 in. VegaTouch touchscreen for complete integration of coach controls (mobile app available)  
 50 in. Samsung® 4K UHD Smart TV  
 Samsung® sound bar with subwoofer  
 Sony® Blu-ray™ player  
 Premium furniture  
 Hand-laid, woodgrain porcelain tiled floors  
 LED interior lighting  
 Decorative ceiling feature with integrated accent lighting  
 Manual solar day shades and blackout night shades  
 Central vacuum system  
 Removable screen on entry door

## WARRANTY

**2+3**  
 YEAR | YEAR  
 LIMITED | STRUCTURAL  
**WARRANTY**

**NO ONE OFFERS  
 A BETTER WARRANTY**

At Entegra Coach, we build our RVs to handle every adventure, then back them with our industry-leading 2+3 Warranty. Our 2-year limited warranty has you covered for 2 camping seasons. That's 730 days. In addition, our 3-year structural warranty has you covered for 3 camping seasons or 1,095 days. You won't find a better warranty in the business, because the only strings we attach are those that deliver the ultimate in reliability. For a copy of our 2-year limited + 3-year structural warranty with complete terms and conditions, please contact your local Entegra Coach dealer.

## CONSTRUCTION

Roof: One-piece fiberglass with 3/8 in. plywood decking, 4 in. arched aluminum trusses, insulation and reflective Flexfoil® (R-24)  
 Sidewalls: Vacuum-bonded, high-gloss gelcoat with R-8 bead-foam insulation  
 Floors: Vacuum-bonded layers of Darco underbelly, a welded aluminum frame, R-9 bead-foam insulation, 3/8 in. Structurwood® and 1/4 in. plywood  
 X-Bridge™ bracing welded into chassis frame  
 Heated basement storage  
 Insulated front and rear caps (R-24)  
 Electric-powered slideout rooms

## KITCHEN

Window with push out lever operation and screen  
 Stainless steel residential refrigerator with ice maker and water dispenser  
 Induction cooktop  
 1.5 cu. ft. convection microwave oven  
 Solid-surface countertops with stainless steel sink  
 Fan-Tastic power exhaust fan with intake  
 Slide-out storage tray(s) in overhead cabinet

## HEAT, A/C, WATER, AND POWER

Onan® 10,000W diesel generator, with automatic start, on slide-out tray  
 2,000W pure sine wave inverter with 100 amp battery charger  
 (2) L16 AGM batteries (6V/390 amp hrs. ea.)  
 50 amp power cord on electric powered reel  
 Automatic transfer switch with surge protection  
 (2) 190W Go Power!® solar panels  
 (3) 15,000 BTU A/C units with heat pumps  
 [(2) 15,000 BTU units with heat pumps on 37K]

## COCKPIT

Valid™ 12.3 in. digital dash with quad core graphics processor, on-board diagnostics, selector knob and ability to display traditional instrument cluster, 360° camera system or GPS navigation  
 Xite™ 360° HD digital camera system  
 Xite™ XSG4 infotainment system with 9 in. touchscreen, iGO navigation, Bluetooth®, Sirius XM™ and AM/FM tuner, integrated camera control and house mode whole-coach audio distribution

## BEDROOM

King-size pillow-top mattress on tilt bed  
 32 in. Samsung® LED 1080P Smart TV  
 Sony® Blu-ray™ player  
 Solid-surface countertops with integrated sink  
 One-piece fiberglass shower with skylight  
 Aqua View SHOWERMISER™ water saving system  
 Thetford® Aqua Magic toilet with foot flush  
 Fan-Tastic power exhaust fan with intake  
 Separate washer and dryer

Floorplan	GVWR (lbs.)	GCWR (lbs.)	Front GAWR (lbs.)	Rear GAWR (lbs.)	Tag GAWR (lbs.)	Wheel Base	Overall Length	Exterior Height w/ A/C & Satellite	Exterior Width	Interior Height	Fresh Water Capacity (gal.)	Grey Waste Water Capacity (gal.)	Black Waste Water Capacity (gal.)
37K	36,320	46,320	14,320	22,000	N/A	230"	37' 10"	12' 10"	101"	84"	100	62	41
39BH	36,320	46,320	14,320	22,000	N/A	255"	39' 11"	12' 10"	101"	84"	100	62	41
39T2	36,320	46,320	14,320	22,000	N/A	255"	39' 11"	12' 10"	101"	84"	100	62	41
40Q2	36,320	46,320	14,320	22,000	N/A	267"	40' 11"	12' 10"	101"	84"	100	62	41

It is important for your safety and enjoyment that you are aware of the weights and tow ratings of the RV you select. Consult a competent advisor for questions or advice. Whether you are new to RVing or a veteran, get a feel for the performance of your RV before heading out on the roadways. When you tow a vehicle with your RV, you must drive differently than when you drive a single vehicle. Practice hooking up, driving, backing up and braking in a safe environment or seek out professional instruction. Jayco affixes a weight label to each RV which lists weight information for that vehicle. Refer to that label to verify the vehicle will meet your requirements. Gross Vehicle Weight Rating (GVWR): The maximum permissible weight of the motorhome, including the Unloaded Vehicle Weight (UVW) plus passengers, personal items, all cargo, fluids, options and dealer-installed accessories. The GVWR is equal to or greater than the sum of the UVW and the Cargo Carrying Capacity. Gross Combined Weight Rating (GCWR): The maximum allowable combined weight of the motorhome used as a tow vehicle and the attached towed vehicle.



Part of Jayco Family of Companies

Entegra Coach, Inc., P.O. Box 460, Middlebury, IN 46540, www.entegracoach.com. See dealer for further information and prices. All information in this brochure is the latest available at the time of publication approval. Entegra Coach reserves the right to make changes and to discontinue models without notice or obligation. Photos in this brochure may show optional equipment and props for photography purposes. RVs built for sale in Canada may differ to conform to Canadian codes. ©2023 Entegra Coach, Inc. Printed in U.S.A. 2032551.2024



entegracoach.com/reatta-xl