

# WOLF DEN

JOIN THE PACK.  
TRAVEL TRAILERS



16EV



ALL-ELECTRIC

17EV



ALL-ELECTRIC

26EV



ALL-ELECTRIC

20RDSE



# WOLF DEN

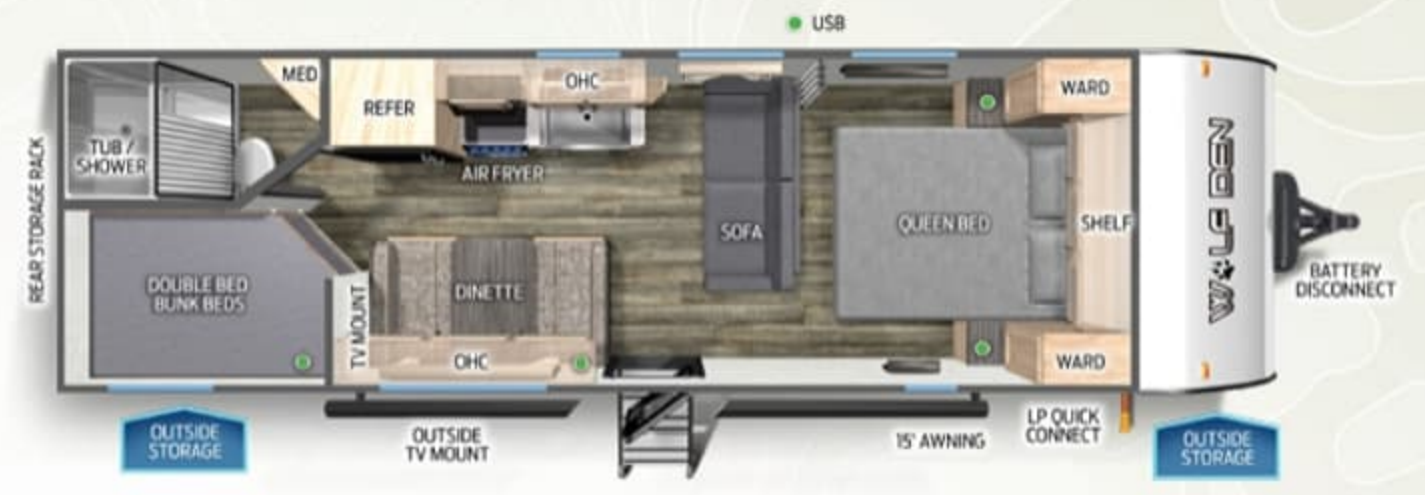
	16EV	17EV	26EV	20RDSE	22MKSE	26DJSE	232MB	242TR	262DBH	272BRB	272RK	282DS
Dry Hitch Weight	393-LBS.	350-LBS.	605-LBS.	450-LBS.	585-LBS.	574-LBS.	675-LBS.	705-LBS.	830-LBS.	805-LBS.	930-LBS.	885-LBS.
Ship Weight	3037-LBS.	3030-LBS.	4425-LBS.	4015-LBS.	4303-LBS.	4550-LBS.	5445-LBS.	5680-LBS.	5950-LBS.	6020-LBS.	6250-LBS.	6840-LBS.
Unloaded Vehicle Weight	2995-LBS.	3030-LBS.	4425-LBS.	4053-LBS.	4341-LBS.	4596-LBS.	5483-LBS.	5718-LBS.	5988-LBS.	6058-LBS.	6288-LBS.	6878-LBS.
Cargo Carrying Capacity	2498-LBS.	2420-LBS.	3180-LBS.	3397-LBS.	3244-LBS.	2978-LBS.	2192-LBS.	5187-LBS.	5042-LBS.	3927-LBS.	3707-LBS.	4207-LBS.
Axle Weight	2644-LBS.	2680-LBS.	3820-LBS.	3565-LBS.	3718-LBS.	3976-LBS.	4770-LBS.	4975-LBS.	4842-LBS.	5215-LBS.	5320-LBS.	5955-LBS.
Exterior Length	21'-9"	21'-10"	29'-6"	25'-4"	26'-9"	29'-6"	29'-9"	31'-3"	33'-3"	32'-8"	34'-1"	37'
Exterior Height w/A/C	10'-6"	10'-6"	10'-6"	10'-6"	10'-6"	97"	111"	111"	111"	11'-1"	111"	11'-1"
Exterior Width	7'-6"	7'-6"	97"	97"	97"	10'-6"	97"	97"	97"	97"	97"	97"
Grey Capacity	28-GAL.	28-GAL.	38 GAL	38 GAL.	38 GAL	38 GAL	38-GAL.	38-GAL.	38-GAL.	38-GAL.	38-GAL.	38-GAL.
Black Capacity	28-GAL.	28-GAL.	28 GAL	28 GAL.	28 GAL	28 GAL	38-GAL.	38-GAL.	38-GAL.	38-GAL.	38-GAL.	38-GAL.
Fresh Capacity	26-GAL.	26-GAL.	40-GAL	40-GAL.	40-GAL	40-GAL	55.GAL.	40-GAL.	40-GAL.	40-GAL.	55-GAL.	55-GAL.



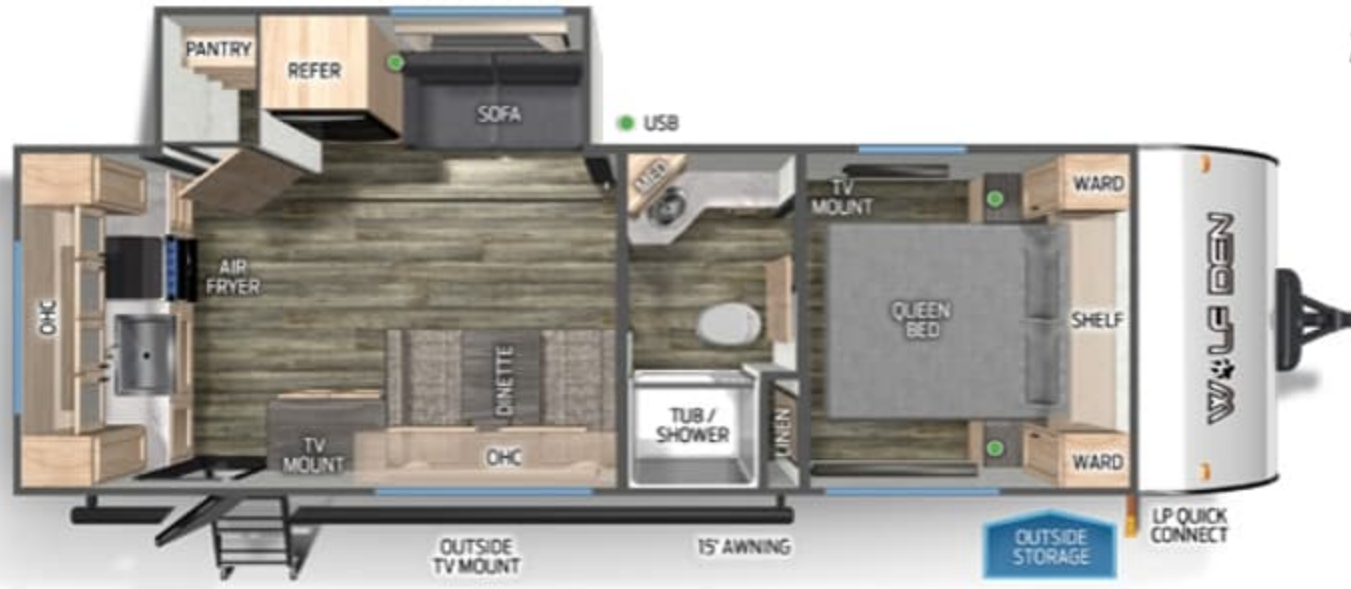
22MKSE



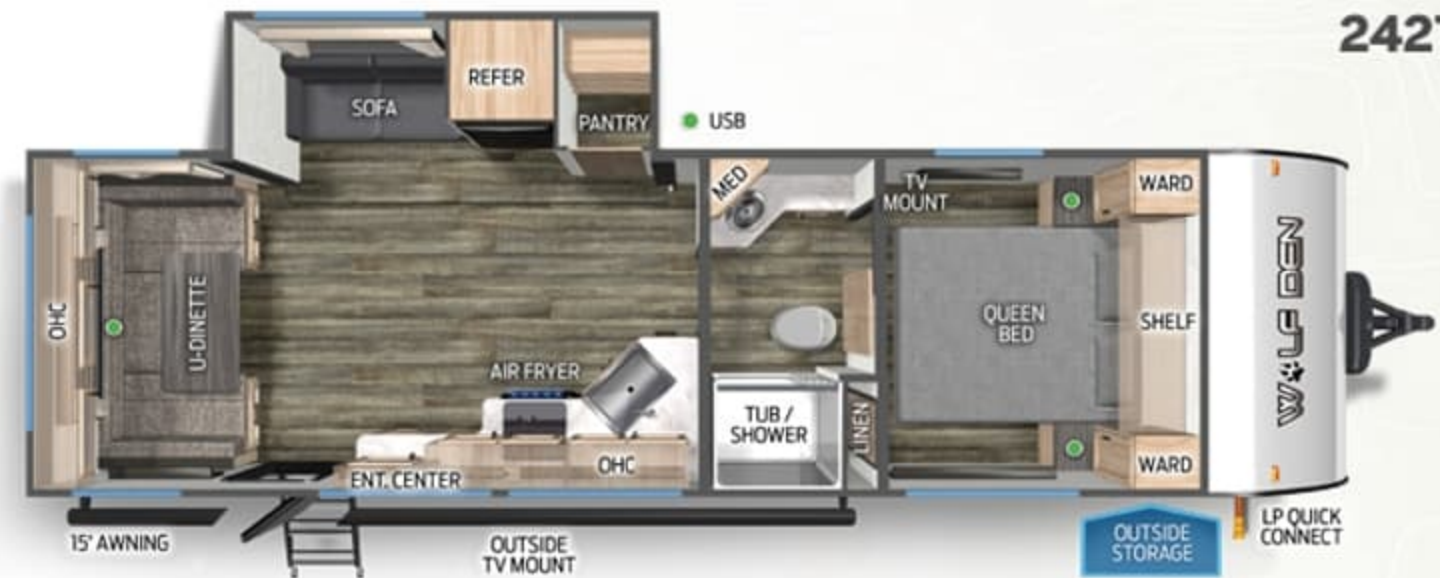
26DJSE



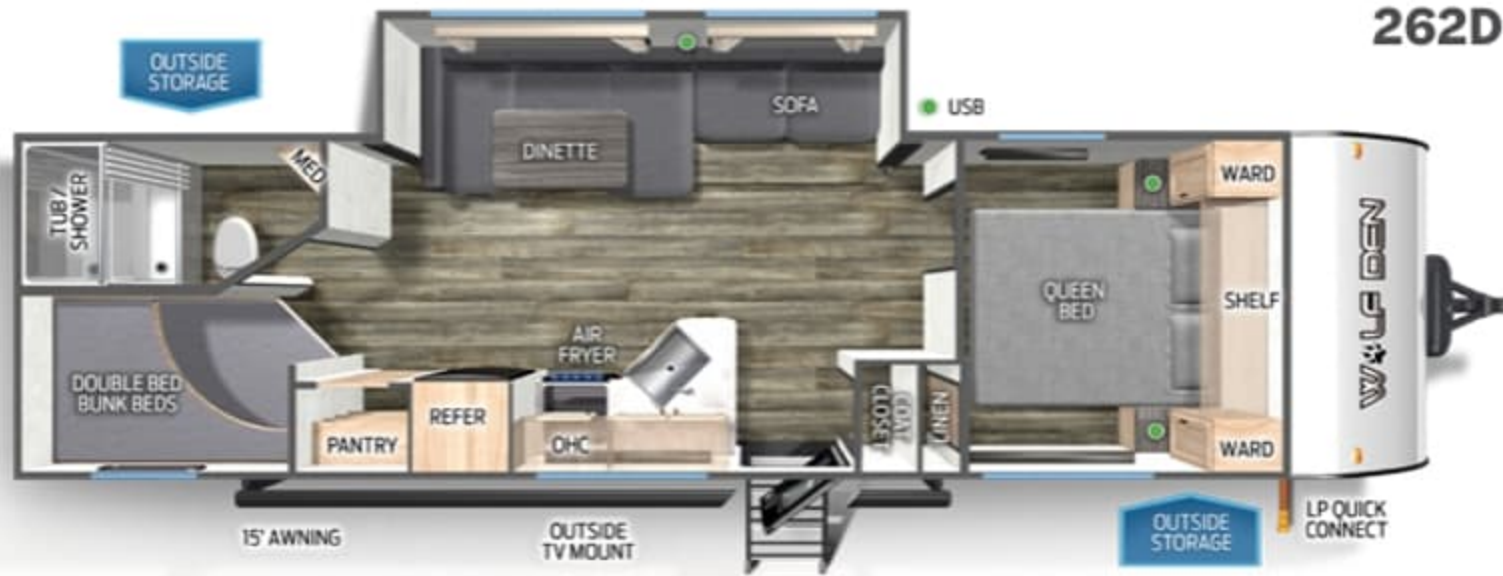
232MB



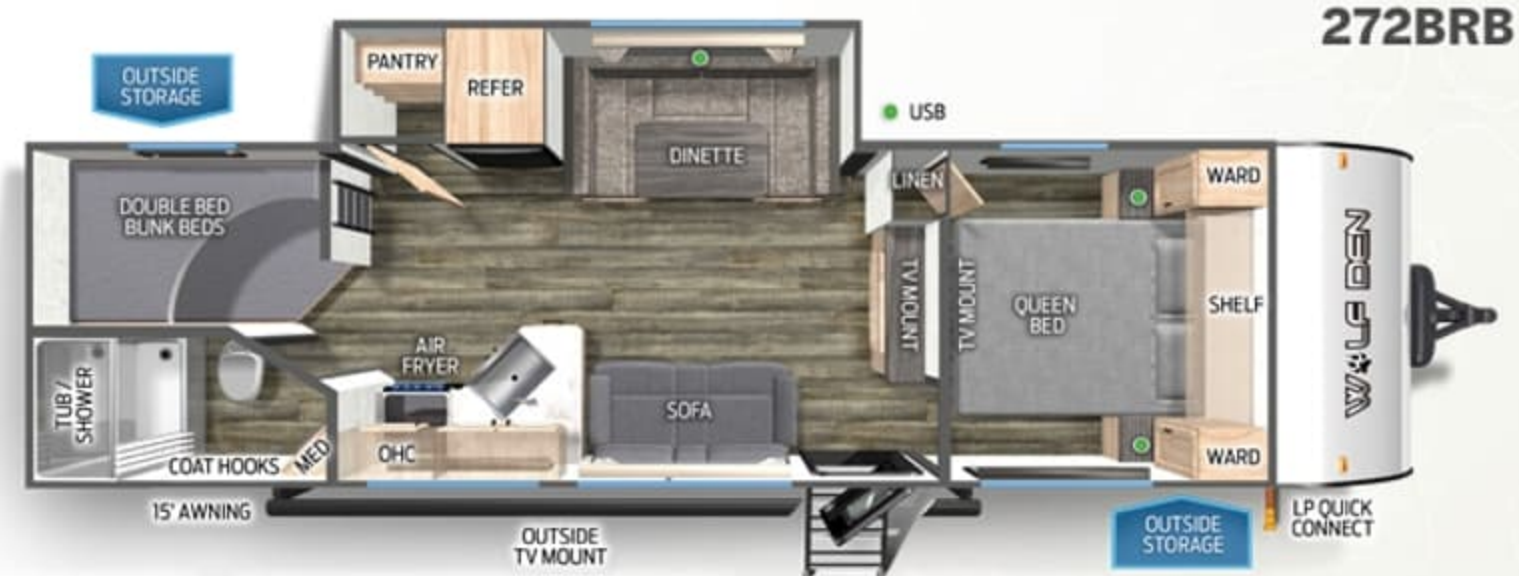
242TR



262DBH



272BRB



272RK



282DS



# WOLF DEN



## 24/7 EMERGENCY ROADSIDE ASSISTANCE WITH VEHICLE PURCHASE\*

TOWING  
JUMP-STARTS  
TIRE CHANGES  
FLUID DELIVERY  
LOCKOUT  
SERVICE

WINCH-OUT  
MOBILE MECHANIC  
TECHNICAL  
SUPPORT  
DEALER LOCATOR  
SERVICES



\*VALID FOR 1 YEAR FROM DATE OF PURCHASE

## CUSTOMER SATISFACTION



[www.ForestRiverBuyLocal.com](http://www.ForestRiverBuyLocal.com)



Learn More  
Scan this barcode using  
a QR Reader on your  
smart phone to learn  
more about Forest River.



A Berkshire Hathaway company.

## FREE MEMBERSHIP to Forest River Owners' Group

[www.forestriverfrog.com](http://www.forestriverfrog.com)



## PRE-DELIVERY INSPECTION FACILITY

20,000 square feet of quality assurance. The bare essentials for a premium product. This state-of-the-art facility gives immediate daily feedback to production for quality assurance in every unit built.

## YOUR WOLF DEN DEALER

## Specification Definitions

**UVW (Unloaded Vehicle Weight)\*** - is the typical weight of the unit as manufactured at the factory. It includes all weight at the unit's axle(s) and tongue or pin and LP Gas. The UVW does not include cargo, fresh potable water, additional optional equipment or dealer installed accessories.

\*Estimated average based on standard build optional equipment.

**CCC (Cargo Carrying Capacity)\*\*** - is the amount of weight available for fresh potable water, cargo, additional optional equipment and accessories. CCC is equal to GVWR minus UVW. Available CCC should accommodate fresh potable water (8.3 lbs per gallon). Before filling the fresh water tank, empty the black and gray tanks to provide for more cargo capacity.

\*\* Estimated average based on standard build optional equipment

Each Forest River RV is weighed at the manufacturing facility prior to shipping. A label identifying the unloaded vehicle weight of the actual unit and the cargo carrying capacity is applied to every Forest River RV prior to leaving our facilities.

The load capacity of your unit is designated by weight, not by volume, so you cannot necessarily use all available space when loading your unit.

All information contained in this brochure is believed to be accurate at the time of publication. However, during the model year, it may be necessary to make revisions and Forest River, Inc., reserves the right to make all such changes without notice, including prices, colors, materials, equipment and specifications as well as the addition of new models and the discontinuance of models shown in this brochure. Therefore, please consult with your Forest River, Inc., dealer and confirm the existence of any materials, design or specifications that are material to your purchase decision. Litho. U.S.A. FOR 2339 P/W: 2023.12.01