

ARCADIA

SUPER LITE / SELECT / FULL SIZE FIFTH WHEELS



KEYSTONE
RV COMPANY

CAMP BETTER
KINDNESS · COMMUNITY · PLANET



3140RK



3140RK



294SL



27SBH



27SBH



3140RK

VISIT OUR WEBSITE FOR PHOTOS, 360° TOURS, AND FULL PRODUCT DETAILS



STEP INTO ARCADIA

Step into a world where the spirit of adventure knows no bounds – welcome to the 2024 Keystone Arcadia. Embrace the essence of exploration, where every mile of the open road becomes a canvas for the stories you create, the memories you forge, and the joie de vivre that permeates every journey. Explore this collection of Arcadia Super Light and ultra-affordable Arcadia Select floorplans and discover our unwavering commitment to infusing your travels with boundless excitement. Designed for the next generation of RV travel, Arcadia continues to captivate with a fresh approach to function and design.

Get ready to embark on a transformative odyssey where the road becomes a symbol of endless possibilities and the pursuit of happiness takes center stage.

ARCADIA SUPER LITE EXCEPTIONAL FEATURES

- NEW Painted Cap & Exterior Graphics w/ Dynamic Two-Tone Skirt Metal
- One-Piece Alpha Super Flex TPO Roof Membrane w/ Limited Lifetime Warranty
- Lippert Road Defense™ Powder-Coated Chassis Protection
- Curt® ARV Deluxe Hitch Pin
- NEW Road Armor™ Upgraded Suspension Package
- Upgraded E-Load Tires w/ 6-Year Warranty
- Upgraded Dexter® Axles w/ EZ-Lube™ Hubs & NEV-R-Adjust™ Brakes
- HyperDeck™ Water-Resistant Floors
- Peak™ Weather Protection Package
- Enclosed, Heated Holding Tanks w/ 12V Heat Pads
- Upgraded 35K BTU Furnace
- Fireplace w/ Additional 5.1K BTU Heating Element (SELECT MODELS)
- Girard® Tankless On-Demand Water Heater
- Coleman-Mach Quiet Series 15K BTU Air Conditioner, w/ Optional 13.5K A/C
- Blade Pure™ High-Performance Airflow System
- Straight-Line Pass-Through Storage
- Stand-Alone Convenience Center
- NEW Soft-Close Cabinet Doors
- Bailey & Paxton Decor Options (SEE KEYSTONERV.COM FOR DETAILS)
- Extra Large, 12V Solar-Friendly Refrigerator
- Residential Roman Shades
- Upgraded Residential-Size 60"x80" Queen Mattress
- SolarFlex™ Protect 220 and Discover 440i Packages w/ Optional Dragonfly Energy Lithium-Ion Batteries
- 1-Year Limited Base Warranty & 3-Year Limited Structural Warranty (SEE KEYSTONERV.COM FOR DETAILS)

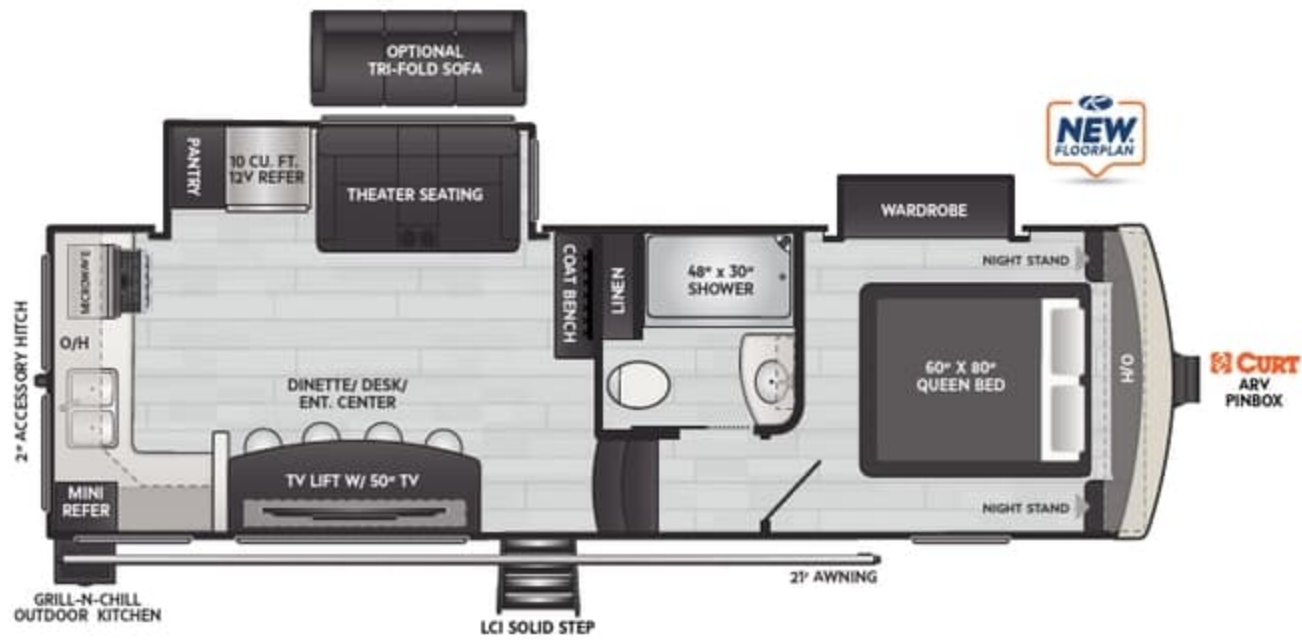


"We took our Keystone Arcadia 248SLRE on a 10,000+ mile road trip from Wisconsin to Alaska with our family of 6 for 2 months and we had an amazing time! Our Arcadia held up so well on the rough Alaskan roads and we were able to take it anywhere and everywhere we wanted to go!"

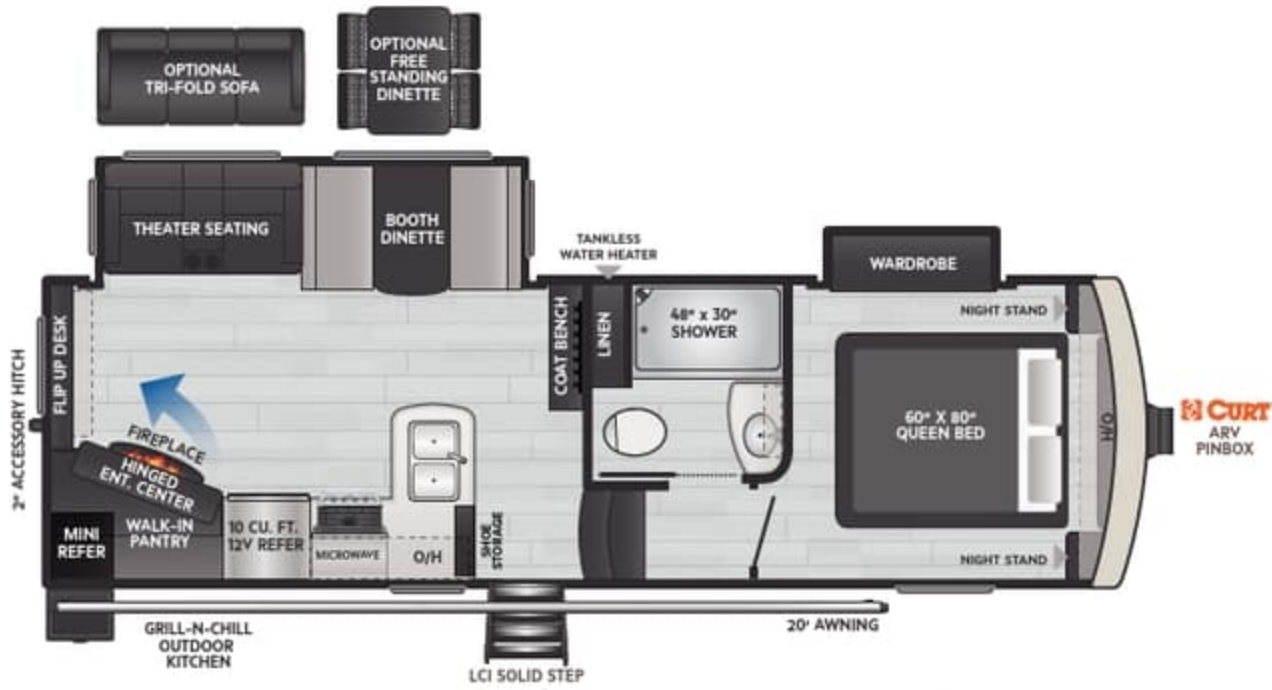


@CRAZYFAMILYADVENTURE —ARCADIA 248SLRE OWNERS

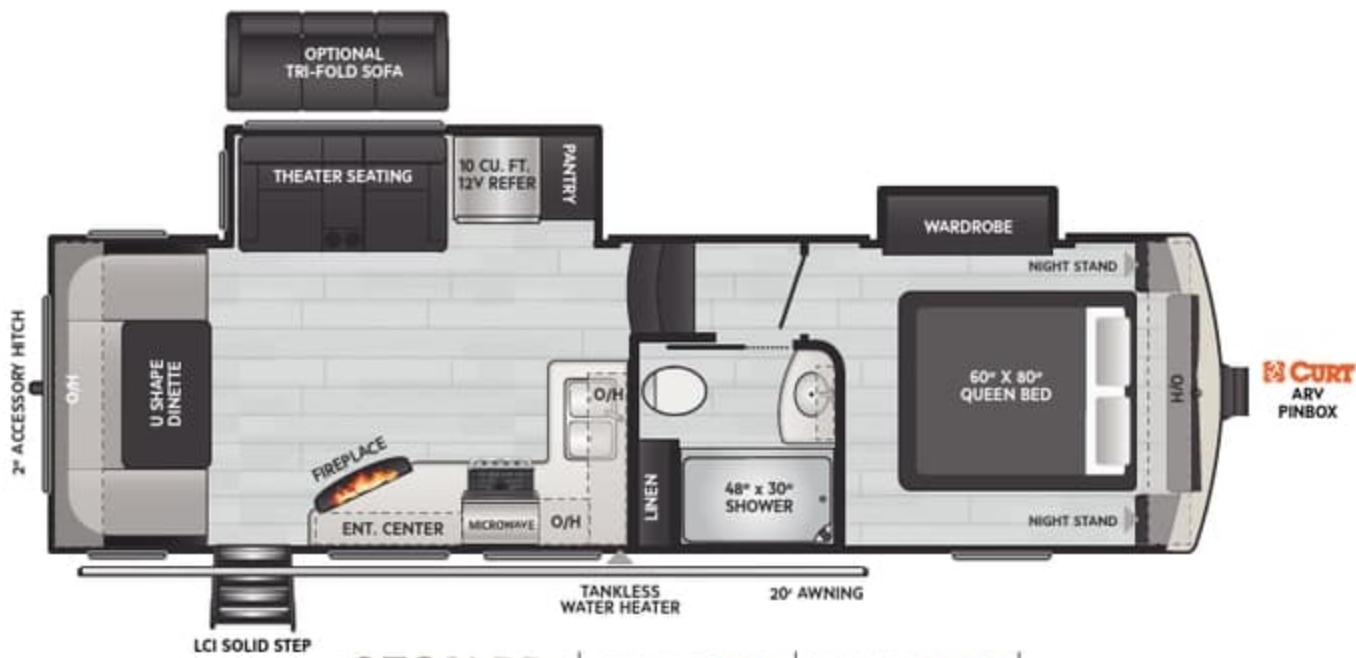
ARCADIA SUPER LITE FIFTH WHEELS



246SLRK | WEIGHT **7195** | LENGTH **28' 6"**



248SLRE | WEIGHT **8193** | LENGTH **28' 11"**

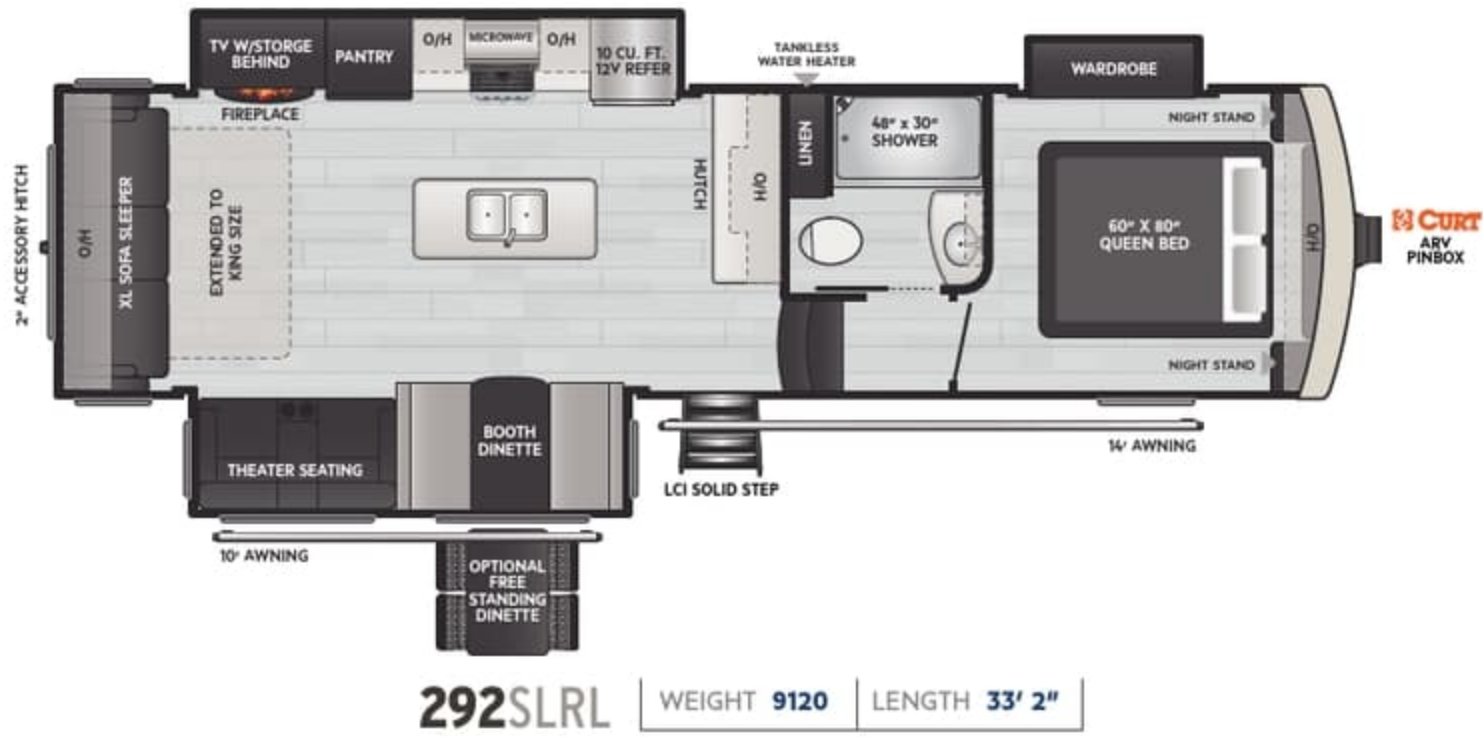


253SLRD | WEIGHT **7838** | LENGTH **29' 3"**

ARCADIA SUPER LITE SPECIFICATIONS

MODEL	WEIGHT	CARRYING CAPACITY	HITCH WEIGHT	FRESH WATER**	WASTE WATER	GRAY WATER	LPG	LENGTH*	WIDTH	HEIGHT	AWNING
246SLRK	7915	1985	1440	54	30	60	60	28' 6"	8'	12' 6"	21'
248SLRE	8143	1857	1295	54	30	60	60	28' 11"	8'	12' 6"	21'
253SLRD	7838	2262	1420	54	30	60	60	29' 3"	8'	12' 6"	20'

ARCADIA SUPER LITE FIFTH WHEELS

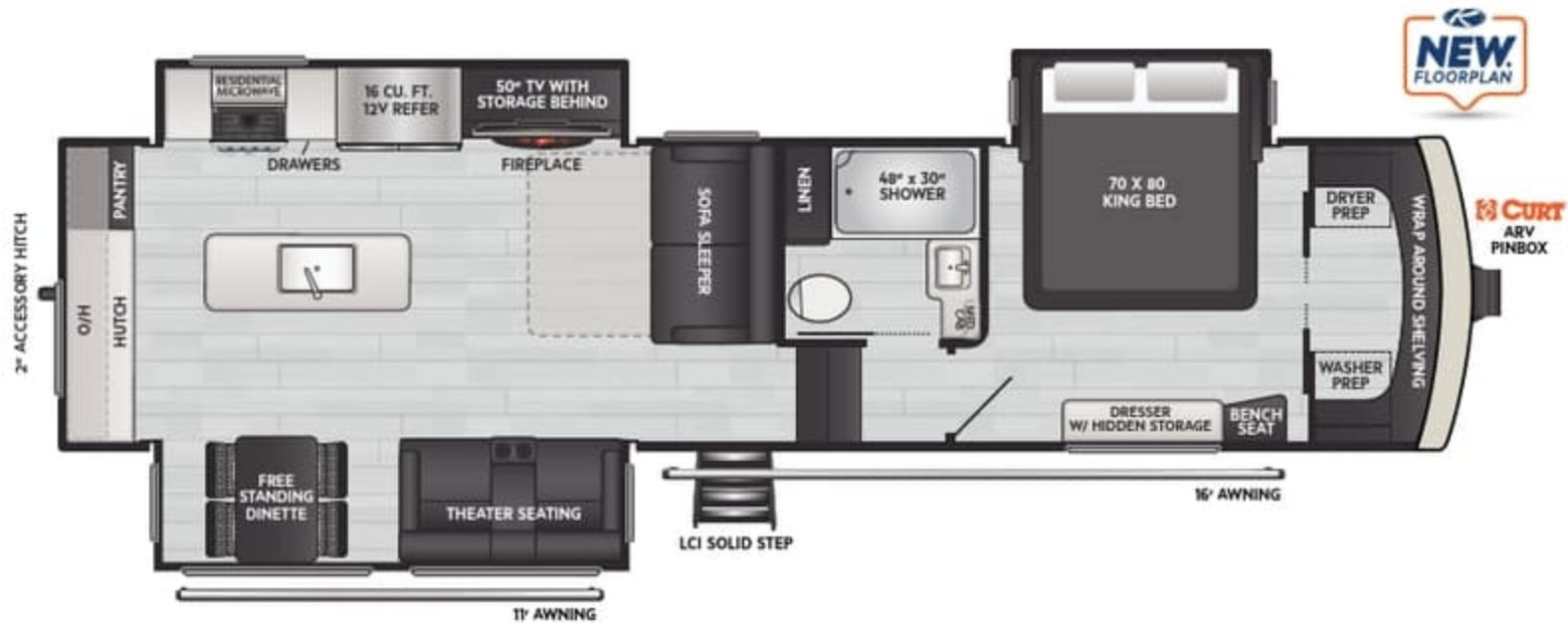


ARCADIA SUPER LITE SPECIFICATIONS

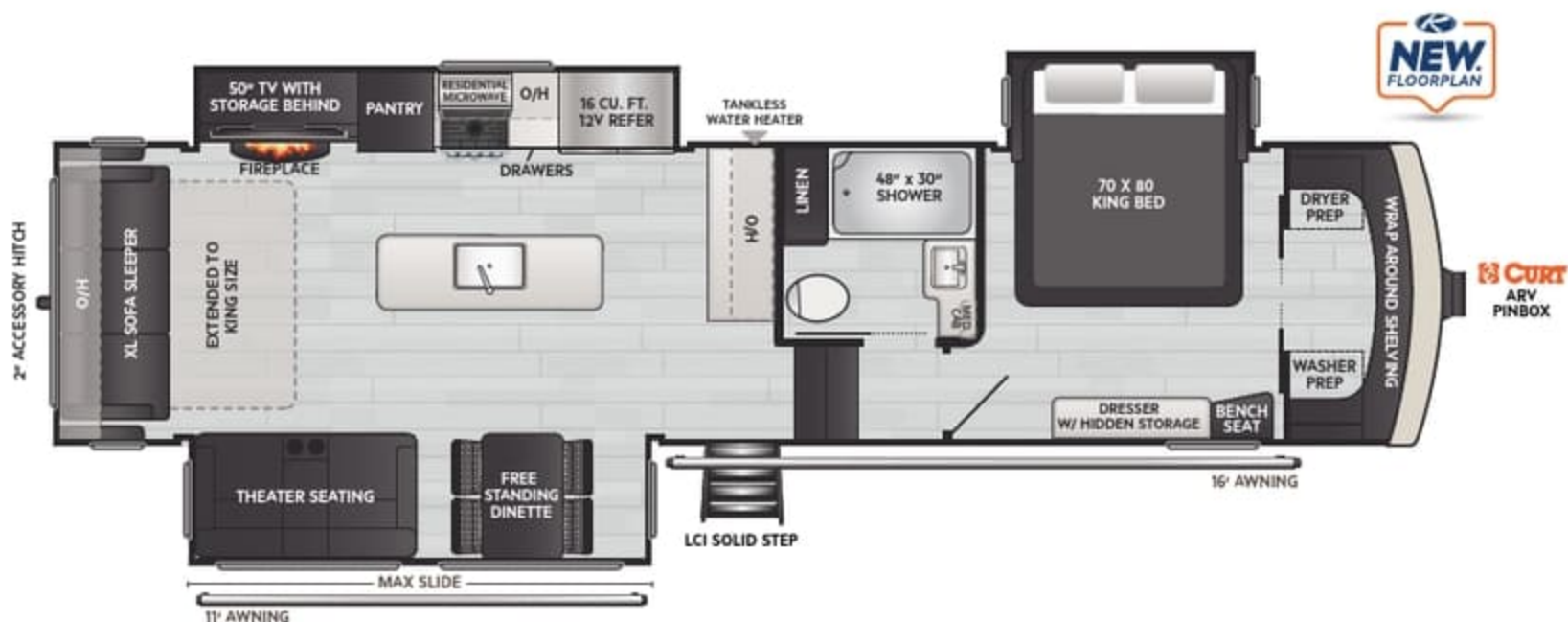
MODEL	WEIGHT	CARRYING CAPACITY	HITCH WEIGHT	FRESH WATER**	WASTE WATER	GRAY WATER	LPG	LENGTH*	WIDTH	HEIGHT	AWNING
288SLBH	8857	2143	1585	54	30	60	60	32' 8"	8'	12' 6"	20'
292SLRL	9120	1880	1500	54	30	60	60	33' 2"	8'	12' 6"	14'/10'
294SLRD	9035	1965	1495	54	30	60	60	33' 2"	8'	12' 6"	14'/11'

ARCADIA FULL SIZE FEATURES & FLOORPLANS

- Road Defense Powder Coated Chassis
- NGC2 Crawlspace Chassis
- Peak Weather Protection Package
- Enclosed, Heated Holding Tanks W/ 12-Volt Heat Pads
- Curt® Arv Deluxe Hitch Pin
- Upgraded Dexter® Axles W/ Ez-Lube™ Hubs & Nev-R-Adjust™ Brakes
- Upgraded E-Load Sailun Tires W/ 6-Year Warranty
- Alpha® TPO Roof Membrane W/ Lifetime Warranty
- Hyperdeck™ Laminated Floor Construction
- Straight-Line Pass Through Storage
- Stand Alone Convenience Center
- Extra Large 12-Volt Solar Friendly Refrigerators
- Upgraded 35,000 Btu Furnace
- Fireplace W/ Additional 5,100 Btu Heating Element
- Girard Tankless Water Heater For Endless And Instant Hot Water
- Blade Pure™ High Performance Air Flow System
- Residential Roman Shades
- Solarflex Protect 220i And Discover 440i Packages Available
- Optional Dragonfly Energy Lithium-Ion Batteries
- **NEW** Road Armor™ Upgraded Suspension Package
- **NEW** Soft-Close Cabinet Doors
- Bailey & Paxton Decor Options
- Upgraded Residential-Size 60" x 80" Queen Mattress
- 1-Year Limited Base Warranty & 3-Year Limited Structural Warranty (SEE KEYSTONERV.COM FOR DETAILS)
- Coleman-Mach Quiet Series 15k Btu Air Conditioner, W/ Optional 15k A/C-3rd Ac Prep



3140RK | WEIGHT 10855 | LENGTH 35' 10"



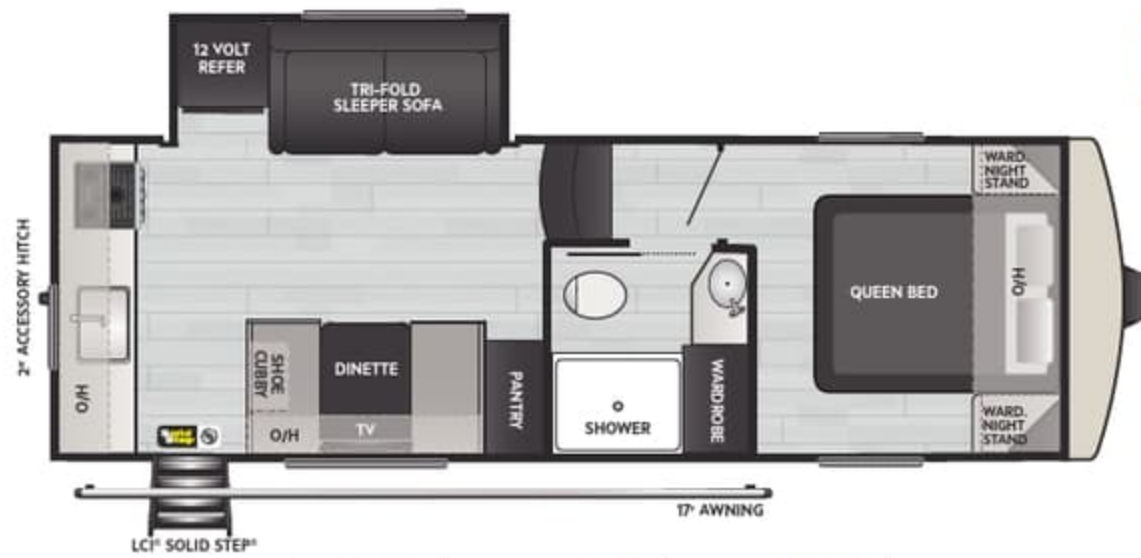
3260RL | WEIGHT 11070 | LENGTH 36' 6"

ARCADIA FULL SIZE SPECIFICATIONS

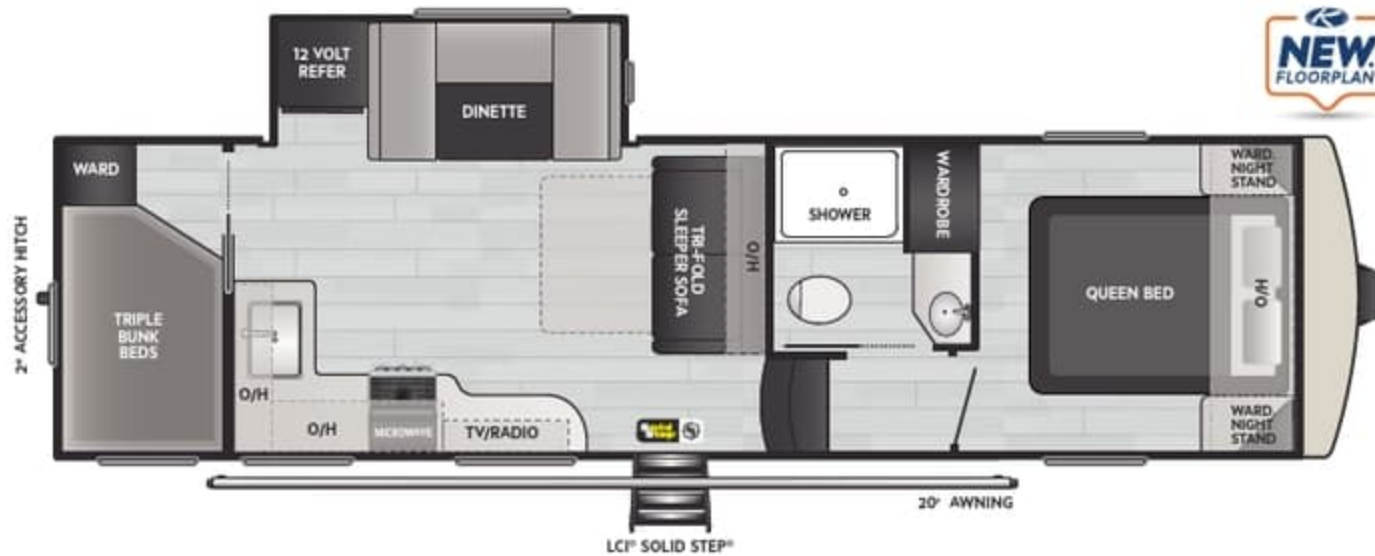
MODEL	WEIGHT	CARRYING CAPACITY	HITCH WEIGHT	FRESH WATER**	WASTE WATER	GRAY WATER	LPG	LENGTH*	WIDTH	HEIGHT	AWNING
3140RK	10855	2645	1955	54	49	88	60	35' 10"	8'	13' 4"	16'/11'
3260RL	11070	2430	2080	54	49	88	60	36' 6"	8'	13' 4"	16'/11'

ARCADIA SELECT FEATURES & FLOORPLANS

- Automotive-Grade Painted Fiberglass Front Cap w/ KeyShield™ Protection & Amber LED Lights
- One-Piece Alpha Super Flex TPO Roof Membrane w/ Limited Lifetime Warranty
- Electric Stabilizer Jacks
- Lippert SolidStep® on Main Entry Door
- Upgraded Roto-Flex Pinbox w/ Maxturn™ Technology
- Tinted Frameless Windows
- Rear Observation Prep
- Slamlatch Compartment Doors
- Two 30lb. LPG Bottles
- Dexter E-Z Lube Bearing Lubrication System
- Dexter Nev-R-Adjust Electric Brake System
- Winegard Air 360+ Omni-Directional Rooftop Antenna w/Exclusive Satellite Pass-Through
- HyperDeck™ Water-Resistant Floors
- Blade Air Conditioning System
- Girard® Tankless On-Demand Water Heater
- Furrion 17" Range w/ Piezo Ignition & Glass Stove-top Cover
- 10 Cu. Ft. 12V Refrigerator
- Tall Slides for Added Comfort and Headroom
- High Rise Chef's Faucet and Sprayer
- Exterior Convenience Center
- 1-Year Limited Base Warranty & 3-Year Limited Structural Warranty (SEE KEYSTONERV.COM FOR DETAILS)
- Heated & Enclosed Underbelly



21SRK | WEIGHT **6750** | LENGTH **26' 4"**



27SBH | WEIGHT **7655** | LENGTH **32' 3"**

ARCADIA SELECT SPECIFICATIONS

MODEL	WEIGHT	CARRYING CAPACITY	HITCH WEIGHT	FRESH WATER**	WASTE WATER	GRAY WATER	LPG	LENGTH*	WIDTH	HEIGHT	AWNING
21SRK	6750	1750	1225	54	30	60	60	26' 4"	8'	12' 4"	17'
27SBH	7655	1845	1315	54	30	60	60	32' 3"	8'	12' 7"	20'

SOLARTM FLEX



NEW 2024 PACKAGE UPDATES

For more information scan the QR code
or visit keystonerv.com.

TAKE *CHARGE* OF HOW YOU CAMP

EXCEPTIONAL QUALITY, IMPOSSIBLY VERSATILE, SolarFlexTM
IS SHATTERING CUSTOMER'S EXPECTATIONS OF FACTORY-INSTALLED SOLAR POWER.
EXCLUSIVELY AVAILABLE ON ALL KEYSTONE RV MODELS.



Keystone RV is proud to partner with Dragonfly Energy to offer their legendary heated Lithium-ion batteries exclusively on all Keystone models.



FOLLOW US FOR THE LATEST!



DISCLAIMER: Product information is as accurate as possible as of the date of publication of this brochure. All features, floor plans, and specifications in this brochure are subject to change without notice. Please also consult Keystone's web site at www.keystonerv.com for more current product information and specifications. Tow Vehicle Disclaimer. CAUTION: Owners of Keystone recreational vehicles are solely responsible for the selection and proper use of tow vehicles. All customers should consult with a motor vehicle manufacturer or their dealer concerning the purchase and use of suitable tow vehicles for Keystone products. Keystone disclaims any liability or damages suffered as a result of the selection, operation, use or misuse of a tow vehicle. KEYSTONE'S LIMITED WARRANTY DOES NOT COVER DAMAGE TO THE RECREATIONAL VEHICLE OR THE TOW VEHICLE AS A RESULT OF THE SELECTION, OPERATION, USE OR MISUSE OF THE TOW VEHICLE. *Length is defined as the distance from the centerline of hitch pin/coupler to rear bumper of trailer. ** Fresh water capacity includes water heater. Please review owner's manual prior to purchase for more information on service warranties, extended use, towing and maintenance. Owner's manuals can be found at keystonerv.com.

PRINT 10.2023