

OUTBACK

PREMIUM / ULTRA-LITE TRAVEL TRAILERS



KEYSTONE
RV COMPANY

CAMP BETTER
KINDNESS · COMMUNITY · PLANET

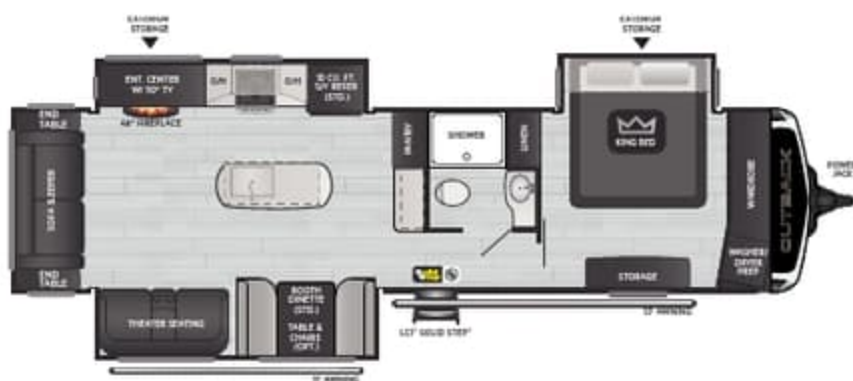
OUTBACK PREMIUM TRAVEL TRAILERS

Welcome to a world of unparalleled luxury and sophistication with 2024 Outback Premium Travel Trailers. Discover a realm where high-end features, exquisite style, and uncompromising comfort seamlessly converge. Crafted with meticulous attention to detail and using only the finest materials, components, and construction techniques, every facet is designed to elevate your travel experience.

PREMIUM FEATURES

- NEW Exterior Graphics
- 10.5" Norco BAL Z-Channel Frame w/ Huck Bolt Assembly
- Fully Walkable Roof
- One-Piece Alpha Super Flex TPO Roof Membrane w/ Limited Lifetime Warranty
- Rear Ladder
- 5,100 lb. Dexter® E-Z Lube Axles w/ 10" Electric Brakes
- Leaf Spring Suspension System
- 15" Radial Tires w/ Aluminum Wheels & Spare
- Lippert Tire Pressure Monitoring System Prep
- Back-Up Camera Prep
- 50 AMP Shore Power Line
- Two 30 lb. Propane Bottles w/ Auto-Changeover
- Elements™ Extended Season Climate Control Package
- 35K BTU High-Capacity Furnace
- Heated & Enclosed Underbelly w/ Electric Tank Heating Pads
- Coleman-Mach Quiet Series 15K BTU Ducted Air Conditioner
- Blade Pure™ High-Performance Airflow System w/MERV 9 Filtration
- Giggy Box 12-Volt Distribution Center w/ Battery Disconnect
- Lighted Power Awning w/ Adjustable Arms
- Friction-Hinge Entry Door w/ Self-Closing Screen & Oversized Grab Handle
- Lippert SolidStep® w/ Extra-Wide First Step
- Winegard Air 360+ Omni-Directional Rooftop Antenna w/ Exclusive Satellite Pass-Through
- Key TV Multi-Source Signal Controller
- Color-Coded & Numbered Wiring
- Girard® Tankless On-Demand Water Heater
- NEW 2024 Castleton Maple Interior Redesign w/ Marble & Gold Accents
- NEW Liam & Cashmere Decor Options (SEE KEYSTONERV.COM FOR DETAILS)
- NEW Theater Seating & Sofa Design w/ Quilted Lumbar
- Solid Surface Countertops
- 48" Fireplace
- SolarFlex™ Protect 220 & Discover 440i Solar Power Systems w/ Optional Dragonfly Energy Lithium-ion Batteries
- 1-Year Limited Base Warranty & 3-Year Limited Structural Warranty (SEE KEYSTONERV.COM FOR DETAILS)

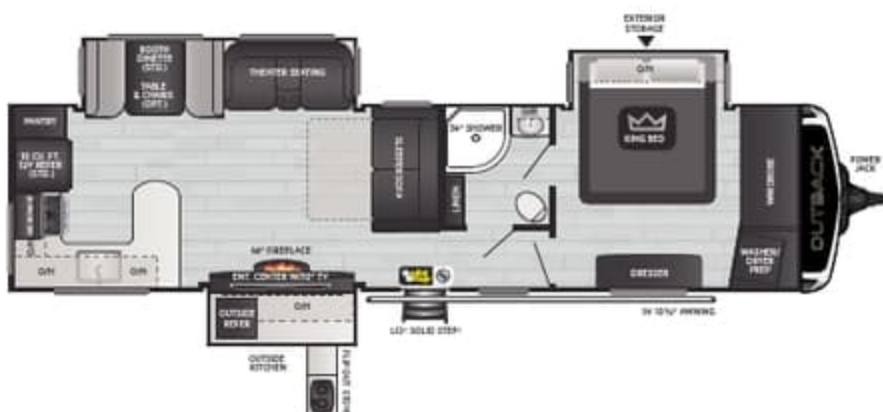
PREMIUM TRAVEL TRAILERS



328RL | WEIGHT 8791 | LENGTH 37' 7"



330RL | WEIGHT 8854 | LENGTH 37' 7"



332ML | WEIGHT 8653 | LENGTH 37' 10"

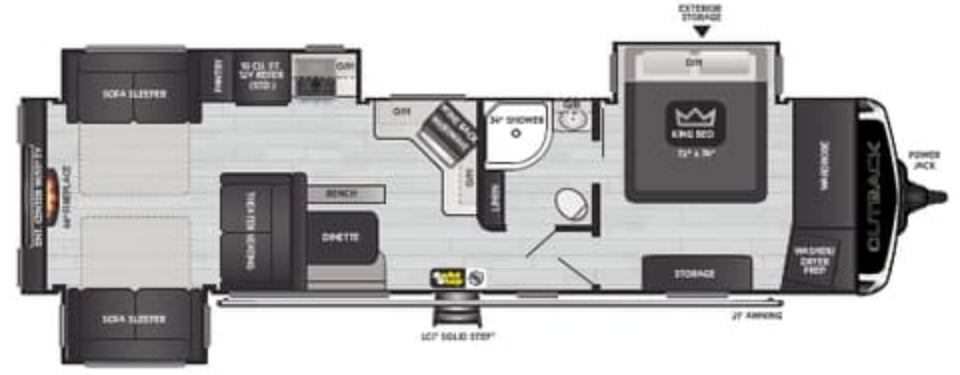


335CG | WEIGHT 8349 | LENGTH 37' 0"

PREMIUM TRAVEL TRAILERS



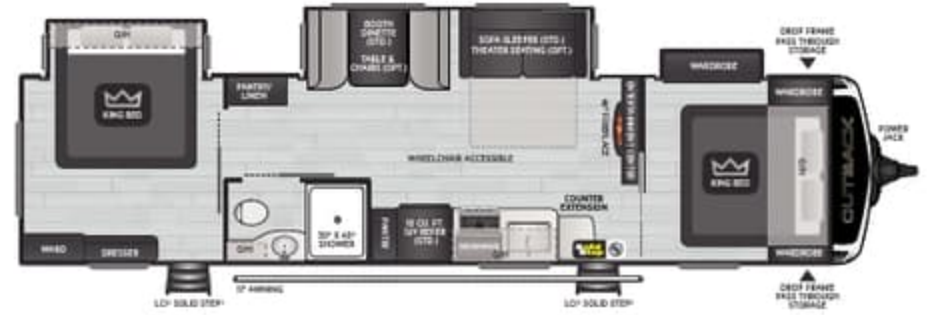
340BH | WEIGHT 8930 | LENGTH 38' 6"



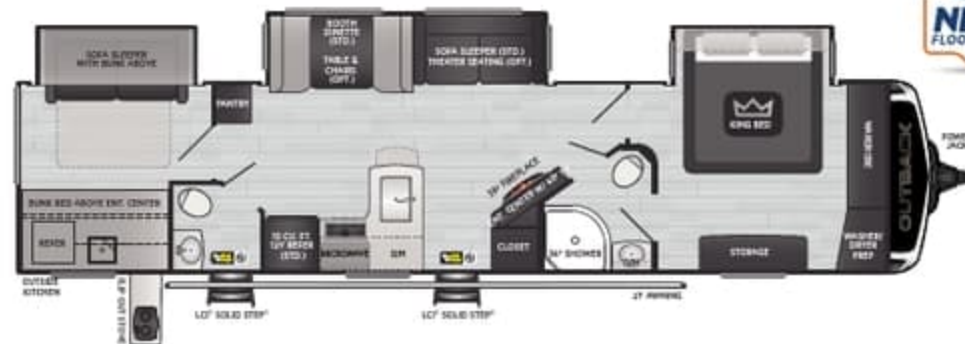
341RD | WEIGHT 8535 | LENGTH 38' 1"



342CG | WEIGHT 8212 | LENGTH 38' 0"



343DB | WEIGHT 8265 | LENGTH 38' 0"



370BH | WEIGHT 9450 | LENGTH 41' 2"



OUTBACK PREMIUM SPECIFICATIONS

MODEL	WEIGHT	CARRYING CAPACITY	HITCH WEIGHT	FRESH WATER**	WASTE WATER	GRAY WATER	LPG	LENGTH*	WIDTH	HEIGHT	AWNING
328RL	8791	1709	1075	54	38	76	60	37' 7"	8'	11' 4"	11'/13'
330RL	8854	1646	1335	54	38	76	60	37' 7"	8'	11' 4"	13'
332ML	8653	1847	1020	54	38	76	60	37' 10"	8'	11' 4"	15'
335CG	8349	2151	1155	54	38	76	60	37' 0"	8'	11' 4"	21'
340BH	8930	2070	1160	54	38	76	60	38' 6"	8'	11' 4"	20'
341RD	8535	1965	1045	54	38	76	60	38' 1"	8'	11' 4"	21'
342CG	8212	2288	960	54	38	76	60	38' 0"	8'	11' 4"	17'
343DB	8265	2235	1165	54	38	76	60	38' 0"	8'	11' 4"	21'
370BH	9450	2050	1230	54	38	76	60	41' 2"	8'	11' 6"	21'

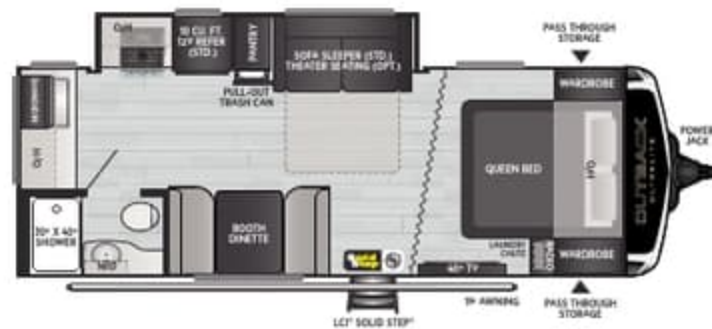
OUTBACK ULTRA-LITE TRAVEL TRAILERS

The 2024 Outback Ultra-Lite lineup encapsulates the same unparalleled luxury, style, and comfort as Outback Premium, translated into smaller, ultra-lightweight floorplans. Redefine your journey with the ultimate blend of high-end features and uncompromising comfort, coupled with exceptional towing performance.

ULTRA-LITE FEATURES

- **NEW** Exterior Graphics
- 9" Norco BAL Z-Channel Frame w/ Huck Bolt Assembly
- Fully Walkable Roof
- Rear Ladder
- One-Piece Alpha Super Flex TPO Roof Membrane w/ Limited Lifetime Warranty
- HyperDeck™ High-Performance, Water-Resistant Floors
- Lippert Power Stabilizing Jacks
- 3,500 lb. Dexter® E-Z Lube Axles w/ 10" Electric Brakes
- Leaf Spring Suspension System
- 14" Radial Tires w/ Aluminum Wheels & Spare
- Back-Up Camera Prep
- Two 30 lb. Propane Bottles w/ Auto-Changeover
- Elements™ Extended Season Climate Control Package
- 35K BTU High-Capacity Furnace
- Heated & Enclosed Underbelly w/ Electric Tank Heating Pads
- Coleman-Mach Quiet Series 15K BTU Ducted Air Conditioner
- Blade Pure™ High-Performance, Airflow System w/MERV 9 Filtration
- Giggy Box 12-Volt Distribution Center w/ Battery Disconnect
- Lighted Power Awning w/ Adjustable Arms
- Friction-Hinge Entry Door w/ Self-Closing Screen & Oversized Grab Handle
- Lippert SolidStep® w/ Extra-Wide First Step
- Winegard Air 360+ Omni-Directional Rooftop Antenna w/ Exclusive Satellite Pass-Through
- Key TV Multi-Source Signal Controller
- Color-Coded & Numbered Wiring
- Girard® Tankless On-Demand Water Heater
- **NEW** 2024 Castleton Maple Interior Redesign w/ Gold Accents
- **NEW** Liam & Cashmere Decor Options (SEE KEYSTONERV.COM FOR DETAILS)
- **NEW** Theater Seating & Sofa Design w/ Quilted Lumbar
- Solid Surface Countertops
- SolarFlex™ Protect 220 & Discover 440i Solar Power Systems w/ Optional Dragonfly Energy Lithium-ion Batteries
- 1-Year Limited Base Warranty & 3-Year Limited Structural Warranty (SEE KEYSTONERV.COM FOR DETAILS)

ULTRA-LITE TRAVEL TRAILERS



221UMD | WEIGHT 5304 | LENGTH 27' 0"

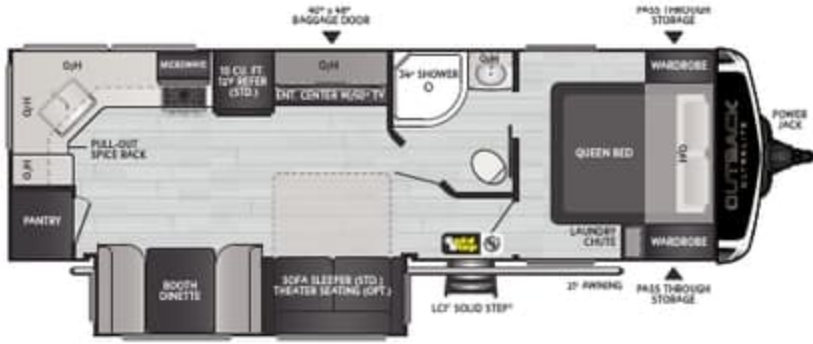


240URS | WEIGHT 5599 | LENGTH 28' 6"

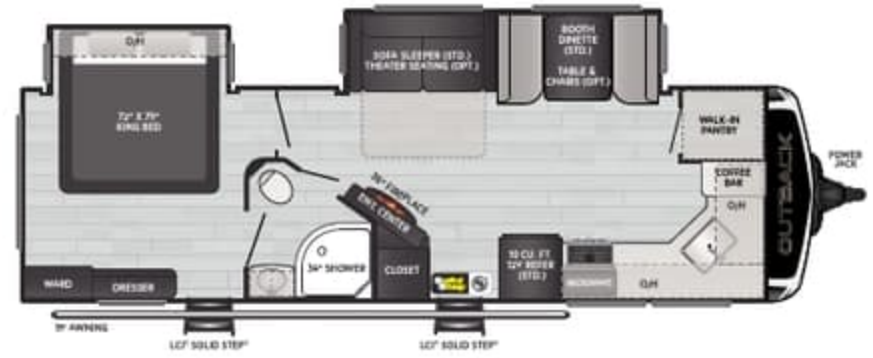


244UBH | WEIGHT 5840 | LENGTH 28' 11"

ULTRA-LITE TRAVEL TRAILERS



260UML | WEIGHT 6370 | LENGTH 30' 8"



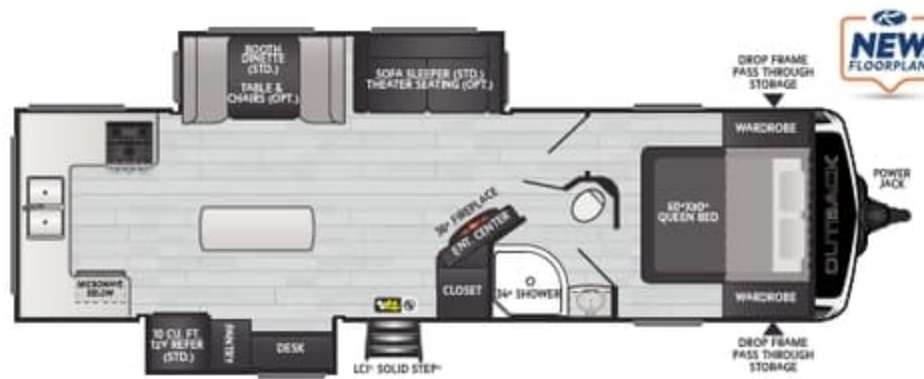
271UFK | WEIGHT 6861 | LENGTH 31' 10"



291UBH | WEIGHT 7030 | LENGTH 33' 8"



292URL | WEIGHT 7280 | LENGTH 33' 11"



296URK | WEIGHT 7075 | LENGTH 33' 11"

OUTBACK ULTRA-LITE SPECIFICATIONS

MODEL	WEIGHT	CARRYING CAPACITY	HITCH WEIGHT	FRESH WATER**	WASTE WATER	GRAY WATER	LPG	LENGTH*	WIDTH	HEIGHT	AWNING
221UMD	5304	1896	600	54	30	30	60	27' 0"	8'	11' 1"	19'
240URS	5599	2101	755	54	30	30	60	28' 6"	8'	11' 1"	20'
244UBH	5840	1830	670	54	30	60	60	28' 11"	8'	11' 1"	21'
260UML	6370	1830	870	54	30	60	60	30' 8"	8'	11' 1"	21'
271UFK	6861	1639	990	54	30	60	60	31' 10"	8'	11' 1"	19'
291UBH	7030	1770	995	54	30	60	60	33' 8"	8'	11' 1"	21'
292URL	7280	2220	890	54	30	60	60	33' 11"	8'	11' 1"	21'
296URK	7075	2425	875	54	30	60	60	33' 11"	8'	11' 2"	21'

KEYSTONE OWNER'S SUPPORT

Keystone makes operating and maintaining your new RV easy with world-class resources and support. Owners have access to a wide variety of support tools and services via the MyKeystone mobile app and the Owner's section of KeystonerRV.com.

FIRST TIME CAMPER'S VIDEO SERIES

A comprehensive guide to RV camping basics with Keystone's Matt & Bart.

PRO TIPS DIY OPERATION & MAINTENANCE VIDEO LIBRARY

Visit our growing collection of step-by-step video and written guides to operating, maintaining, and repairing your Keystone RV.

DIGITAL OWNER'S MANUAL

Our new online owner's manual is fully searchable and features helpful visual and video support.

DIY REPAIR PROGRAM*

Which includes free parts for small repairs within your first year of ownership

1-YEAR LIMITED BASE WARRANTY*

3-YEAR LIMITED STRUCTURAL WARRANTY*

*See KeystoneRV.com for full details. PRO TIP: Owners should work with their dealers or other Keystone authorized service center or mobile tech to document all warranty claims within the warranty period.

VISIT OUR WEBSITE FOR PHOTOS,
360° TOURS, AND FULL PRODUCT DETAILS



"We are so glad we chose the Outback 302UBH travel trailer! This model was a perfect floor plan for our family of 4 with 3 dogs and 2 cats. We fell in love with the modern and stylish design, and as full time RV travelers, the Outback hasn't let us down. It has the perfect bunk house for our 2 children with all their belongings and a pet kennel built into the master bed base. This unit has taken us to many awesome boondocking spots and because of the 34' 10" length, it has enabled us to be able to access State and National Parks across the country. We definitely recommend Keystone and the Outback model!"



@DASH.OF.ADVENTURE — OUTBACK 302UBH OWNERS

SOLARTM FLEX



NEW 2024 PACKAGE UPDATES

For more information scan the QR code
or visit keystonerv.com.

TAKE *CHARGE* OF HOW YOU CAMP

EXCEPTIONAL QUALITY, IMPOSSIBLY VERSATILE, SolarFlexTM
IS SHATTERING CUSTOMER'S EXPECTATIONS OF FACTORY-INSTALLED SOLAR POWER.
EXCLUSIVELY AVAILABLE ON ALL KEYSTONE RV MODELS.



Keystone RV is proud to partner with Dragonfly Energy to offer their legendary heated Lithium-ion batteries exclusively on all Keystone models.



FOLLOW US FOR THE LATEST!



DISCLAIMER: Product information is as accurate as possible as of the date of publication of this brochure. All features, floor plans, and specifications in this brochure are subject to change without notice. Please also consult Keystone's web site at www.keystonerv.com for more current product information and specifications. Tow Vehicle Disclaimer. CAUTION: Owners of Keystone recreational vehicles are solely responsible for the selection and proper use of tow vehicles. All customers should consult with a motor vehicle manufacturer or their dealer concerning the purchase and use of suitable tow vehicles for Keystone products. Keystone disclaims any liability or damages suffered as a result of the selection, operation, use or misuse of a tow vehicle. KEYSTONE'S LIMITED WARRANTY DOES NOT COVER DAMAGE TO THE RECREATIONAL VEHICLE OR THE TOW VEHICLE AS A RESULT OF THE SELECTION, OPERATION, USE OR MISUSE OF THE TOW VEHICLE. *Length is defined as the distance from the centerline of hitch pin/coupler to rear bumper of trailer. ** Fresh water capacity includes water heater. Please review owner's manual prior to purchase for more information on service warranties, extended use, towing and maintenance. Owner's manuals can be found at keystonerv.com.

PRINT 10.2023