

SPRINTER

FIFTH WHEELS / TRAVEL TRAILERS



KEYSTONE
RV COMPANY

CAMP BETTER
KINDNESS · COMMUNITY · PLANET

BOLD. UNEXPECTED. SPRINTER

Introducing Sprinter's 2024 collection of fifth wheel and travel trailer RVs – where spacious living, abundant storage, and enhanced towing stability unite under the umbrella of a remarkable 100" wide body design. We invite you to embrace the advantages of a wider interior, providing you with more room for relaxation, increased space for storing your essentials, and a towing experience that is both secure and confident. Sprinter's commitment to value is evident in every floorplan, as we leverage our size advantage to offer models tailor-made for large families – a rarity in the RV industry.

With Sprinter, you're not just entering an RV, but a realm of comfort, convenience, and innovative design that redefines your travel experience. Discover the luxury of more, and unlock the potential of limitless adventures with Sprinter.

SPRINTER EXCEPTIONAL FEATURES

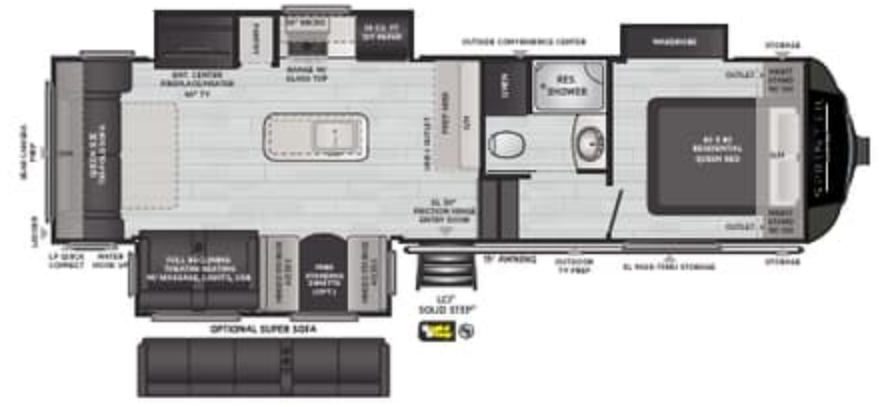
- 100" Wide Body Construction, 5-7% Increase in Floor Space
- Tru-Fit™ Slide Construction
- Automotive-Grade Painted Fiberglass Front Cap w/ Keyshield™ Protection
- Maxturn™ Technology (FIFTH WHEEL MODELS ONLY)
- Hitch Vision™ (FIFTH WHEEL MODELS ONLY)
- Lippert Road Armor™ Suspension
- One-Piece Alpha Super Flex TPO Roof Membrane W/ Limited Lifetime Warranty
- Exterior Ladder for Easy Access to Fully Walkable Roof & Slide Boxes
- E-Z Lube Dexter® Axles
- Dexter® Nev-R-Adjust™ Brakes
- Thermal Package Weather Protection
- Heated & Enclosed Underbelly
- Blade Pure™ High-Performance Airflow System w/ MERV-9 Filtration
- A-Track Air Conditioner Ducting System
- 30K BTU Furnace
- Girard® Tankless, On-Demand Water Heater
- In-Command® SMART RV Control System
- Winegard Air 360+ Omni-Directional Rooftop Antenna w/ Exclusive Satellite Pass-Through
- More Walkable Living Space
- Largest Windows in Class
- Best-In-Class Exterior & Interior Storage
- 75-Gallon Fresh Water Tank
- **NEW** Exterior All-In-One Convenience Center
- **NEW** Pearl and Cedar Decor Options (SEE WEBSITE FOR DETAILS)
- Larger Islands & Countertops
- Solid Surface Countertops (LIMITED 5TH WHEELS & TT ONLY)
- **NEW** Optional Super Sofa (Select Models)
- Furrion® Glass-Front Refrigerators
- Optional, Factory-Installed Splendide Washer & Dryer (LIMITED 5TH WHEELS & TT ONLY)
- SolarFlex™ Protect 220 & Discover 440i Solar Power Packages w/ Optional Dragon Energy Lithium-Ion Batteries
- 1-Year Limited Base Warranty & 3-Year Limited Structural Warranty (SEE KEYSTONERV.COM FOR DETAILS)



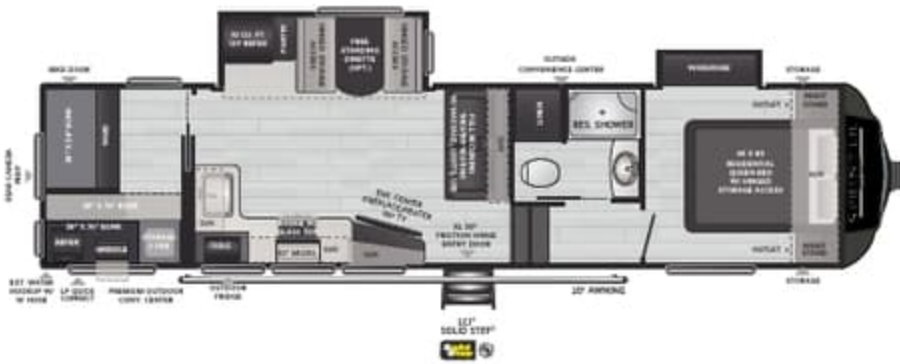
SPRINTER FIFTH WHEELS



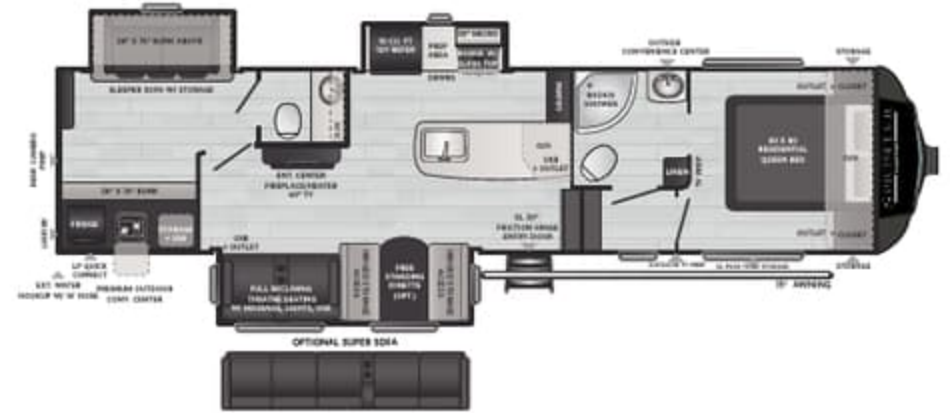
25ML | WEIGHT 8756 | LENGTH 29' 9"



30RL | WEIGHT 10320 | LENGTH 33' 6"



31TB | WEIGHT 10145 | LENGTH 35' 9"



32BH | WEIGHT 10554 | LENGTH 37' 0"



35BH | WEIGHT 11485 | LENGTH 39' 7"

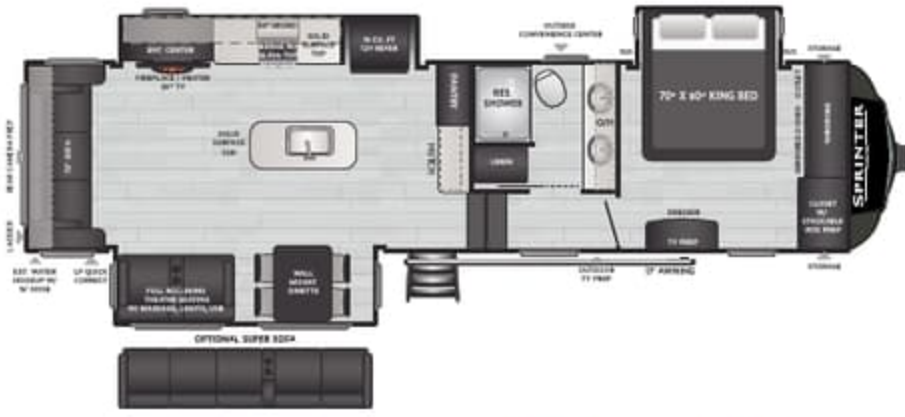


We purchased our Keystone Sprinter Campfire 31FWMB in June 2019 and within 30 days of our purchase we had jumped into full-time RVing with our then 18-month-old daughter and our 2 dogs. It's easily the greatest decision we ever made. We love that we can tow our 36' fifth wheel tirelessly with our older Ram 3500 because it weighs in at under 13,000 lbs fully loaded with everything we own on board and still allows us the luxury of 2 bedrooms with doors. Lennon loves her mid bunk with plenty of room for toy storage and our favorite feature is our big back window allowing tons of light into our kitchen/living. There's so much light coming through in fact that I was able to keep many of my houseplants from our sticks and bricks. We just upgraded our solar with 3 Lithium-ion batteries from Dragonfly Energy so that we can Camp Better and we're looking forward to the many milestones of memories ahead with our Keystone RV!

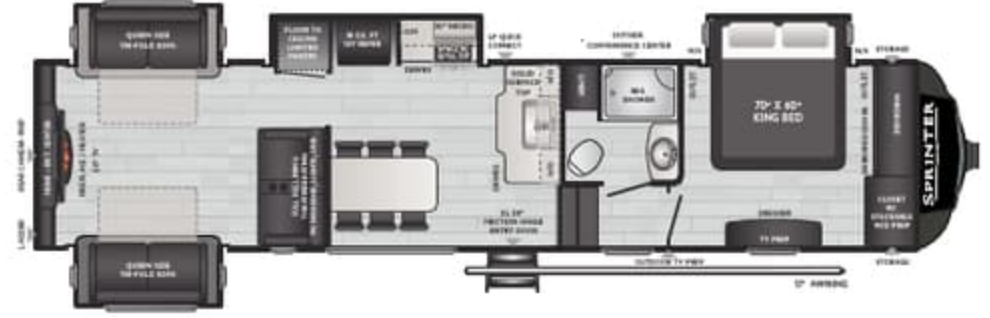


@LLAMALLAMAADVENTURES — SPRINTER 31FWMB OWNERS

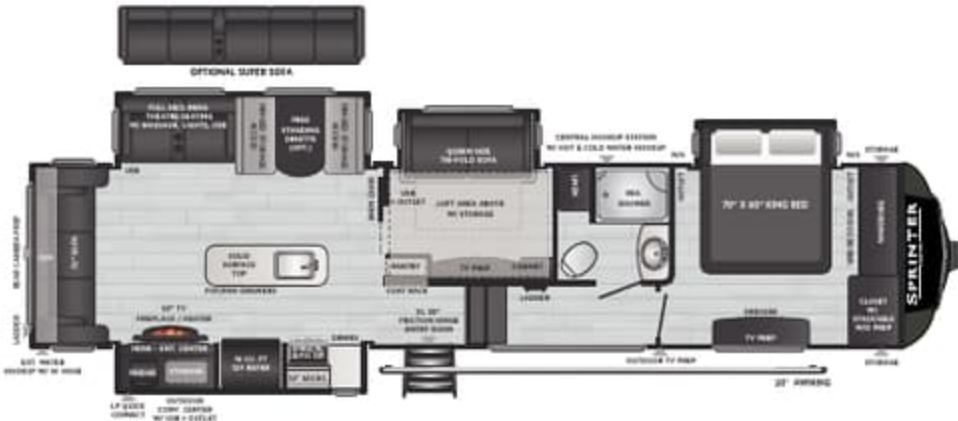
SPRINTER LIMITED FIFTH WHEELS



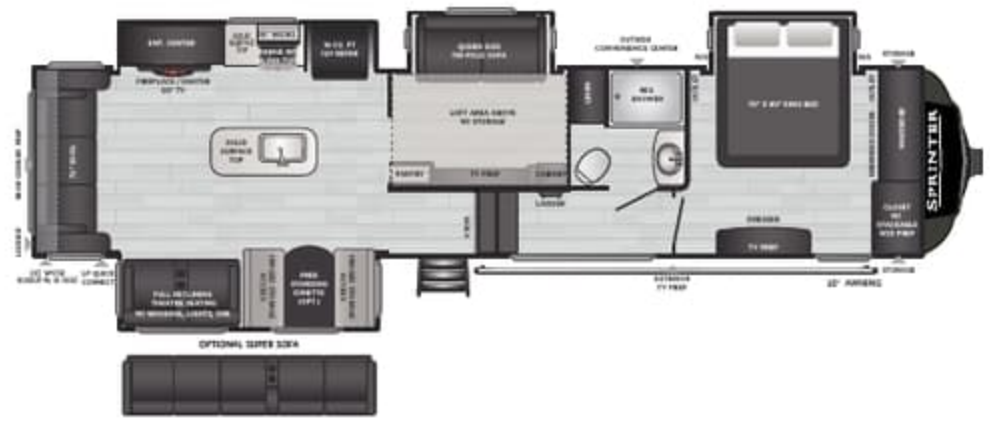
3190RLS | WEIGHT 10755 | LENGTH 35' 9"



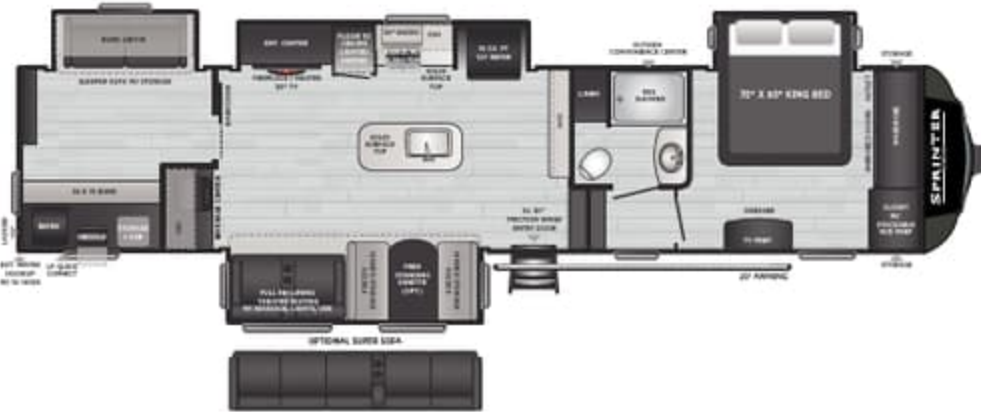
3530DEN | WEIGHT 11105 | LENGTH 38' 10"



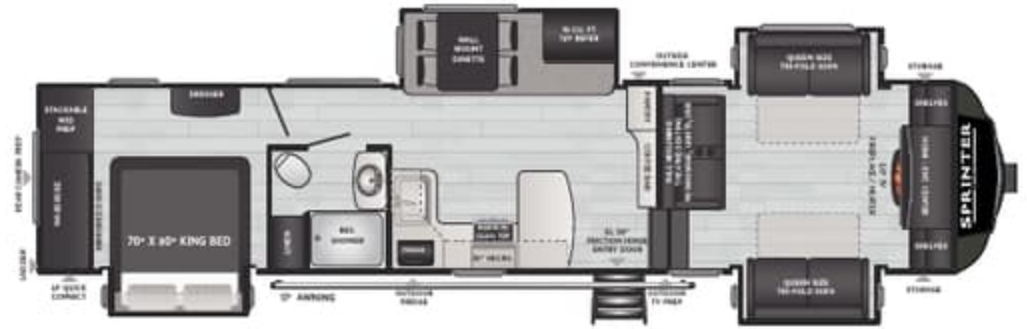
3570LFT | WEIGHT 11973 | LENGTH 39' 4"



3590LFT | WEIGHT 11854 | LENGTH 39' 4"



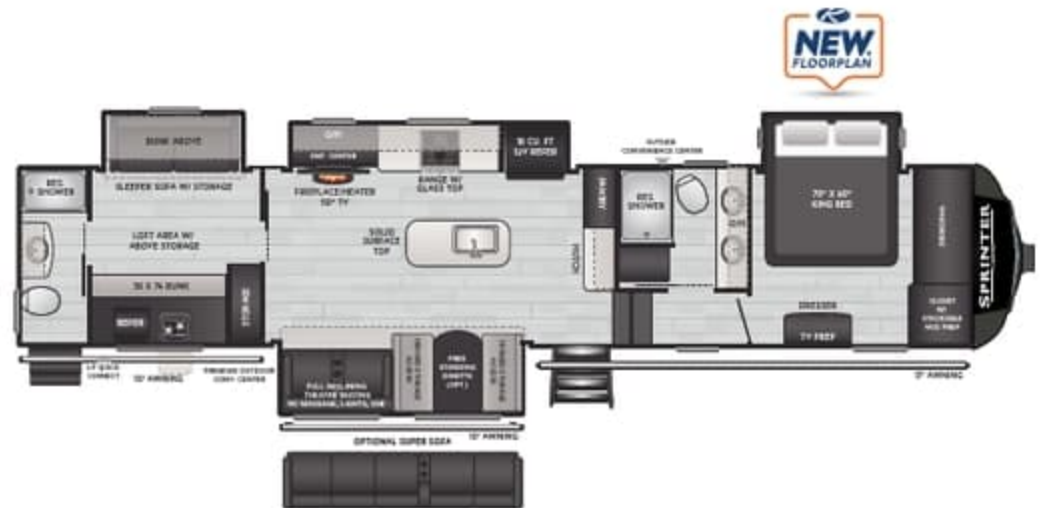
3630BHS | WEIGHT 12236 | LENGTH 40' 8"



3670FLS | WEIGHT 11739 | LENGTH 40' 4"



3810QBS | WEIGHT 13350 | LENGTH 42' 11"

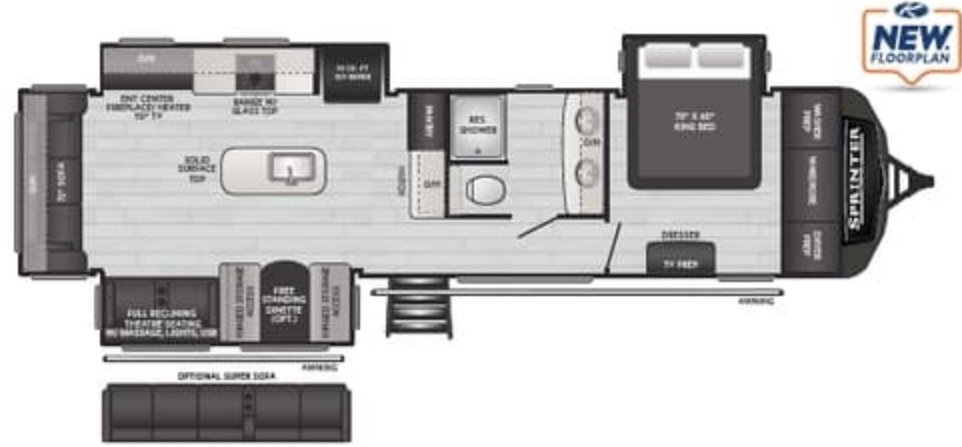


3900DBL | WEIGHT 13842 | LENGTH 43' 6"

SPRINTER LIMITED TRAVEL TRAILERS



352FKS | WEIGHT 9965 | LENGTH 39' 6"



360RLS | WEIGHT 10490 | LENGTH 40' 5"



372BHS | WEIGHT 11025 | LENGTH 40' 11"

SPRINTER SPECIFICATIONS

MODEL	WEIGHT	CARRYING CAPACITY	HITCH WEIGHT	FRESH WATER**	WASTE WATER	GRAY WATER	LPG	LENGTH*	WIDTH	HEIGHT	AWNING
FIFTH WHEELS											
25ML	8756	3214	1770	75	44	78	60	29' 9"	8' 4"	13' 0"	17'
30RL	10320	1890	2320	75	44	78	60	33' 6"	8' 4"	13' 0"	15'
31TB	10145	1955	2030	75	44	78	60	35' 9"	8' 4"	13' 0"	20'
32BH	10554	1376	1735	75	78	44	60	37' 0"	8' 4"	13' 0"	15'
35BH	11485	2515	2665	75	78	112	60	39' 7"	8' 4"	13' 4"	12'/12'
LIMITED FIFTH WHEELS											
3190RLS	10755	2145	2155	75	44	78	60	35' 9"	8' 4"	13' 2"	17'
3530DEN	11105	2895	2230	75	44	44	60	38' 10"	8' 4"	13' 2"	17'
3570LFT	11973	2027	2440	75	44	78	60	39' 4"	8' 4"	13' 2"	20'
3590LFT	11854	2146	2465	75	44	78	60	39' 4"	8' 4"	13' 2"	20'
3630BHS	12665	1635	2330	75	44	78	60	40' 11"	8' 4"	20'	20'
3670FLS	11739	2261	2480	75	34	102	60	40' 4"	8' 4"	13' 4"	17'
3810QBS	13350	3650	3155	75	78	122	60	42' 11"	8' 4"	13' 4"	17'/12'
3900DBL	13842	2748	2595	75	88	122	60	43' 6"	8' 4"	13' 4"	17'/10'/10'
LIMITED TRAVEL TRAILERS											
352FKS	9965	3235	1930	75	44	112	60	39' 6"	8' 4"	11' 6"	15'/10'
360RLS	10490	2500	1210	75	44	112	60	40' 5"	8' 4"	11' 6"	15'/10'
372BHS	11025	1975	1090	75	44	112	60	40' 11"	8' 4"	11' 6"	10'/10'

VISIT OUR WEBSITE FOR PHOTOS, 360° TOURS, AND FULL PRODUCT DETAILS



SOLARTM FLEX



NEW 2024 PACKAGE UPDATES

For more information scan the QR code
or visit keystonerv.com.

TAKE CHARGE OF HOW YOU CAMP

EXCEPTIONAL QUALITY, IMPOSSIBLY VERSATILE, SolarFlexTM
IS SHATTERING CUSTOMER'S EXPECTATIONS OF FACTORY-INSTALLED SOLAR POWER.
EXCLUSIVELY AVAILABLE ON ALL KEYSTONE RV MODELS.



Keystone RV is proud to partner with Dragonfly Energy to offer their legendary heated Lithium-ion batteries exclusively on all Keystone models.



FOLLOW US FOR THE LATEST!



DISCLAIMER: Product information is as accurate as possible as of the date of publication of this brochure. All features, floor plans, and specifications in this brochure are subject to change without notice. Please also consult Keystone's web site at www.keystonerv.com for more current product information and specifications. Tow Vehicle Disclaimer. CAUTION: Owners of Keystone recreational vehicles are solely responsible for the selection and proper use of tow vehicles. All customers should consult with a motor vehicle manufacturer or their dealer concerning the purchase and use of suitable tow vehicles for Keystone products. Keystone disclaims any liability or damages suffered as a result of the selection, operation, use or misuse of a tow vehicle. KEYSTONE'S LIMITED WARRANTY DOES NOT COVER DAMAGE TO THE RECREATIONAL VEHICLE OR THE TOW VEHICLE AS A RESULT OF THE SELECTION, OPERATION, USE OR MISUSE OF THE TOW VEHICLE. *Length is defined as the distance from the centerline of hitch pin/coupler to rear bumper of trailer. ** Fresh water capacity includes water heater. Please review owner's manual prior to purchase for more information on service warranties, extended use, towing and maintenance. Owner's manuals can be found at keystonerv.com.

PRINT 10.2023