



RECREATIONAL
VEHICLES

CONNECT

LIGHTWEIGHT TRAVEL TRAILERS



CM191BHK | Nomad décor

CONNECT MINI



C241RESE | Nomad décor

CONNECT SE



C302FBK | Nomad décor

CONNECT



2024 CONNECT MINI, SE & CONNECT



The KZ **TRUE 2 WARRANTY** is a 2-year hitch-to-bumper limited warranty that's true to its name. The gold standard in RV protection, True 2 provides double the coverage of the industry norm. Plus, our warranty is backed by the craftsmanship and quality we're known for, so you can Go. Camp. Live. Wherever your adventure takes you, know that you're covered in your KZ.

2024 DÉCOR



CLIMATE PACKAGE

BUILT FOR ALL SEASONS adds insulation so you can extend the camping season, with a fully enclosed, insulated, and heated underbelly to protect tanks and pipes (R-9* sidewalls, R-20* roof, and R-24* floor).
*Calculated R-Value



OUTDOOR KITCHENS (floorplan specific) include griddle and refrigerator.



KZ ENGAGE PACKAGE: powered by One Control. One Control monitors the battery levels, controls the sliderooms, leveling system, awning(s), inside/outside lighting, and TPMS prep.



LIGHTED TONGUE JACK assists setup & teardown.



FLIP-UP ENTRY STEP provides solid footing, and folds neatly away. The friction-hinged entry door with grab-bar and screen-shot feature eliminates slamming and makes for safe, easy passage.



Experience more freedom and adventure with our solar package. Get the convenience of powering your electronics any time, anywhere. **OPTIONAL "OFF THE GRID" SOLAR PACKAGE** includes (1) 200W flexible solar panel, 30A MPPT solar charge controller and 1,200W pure sine wave inverter.



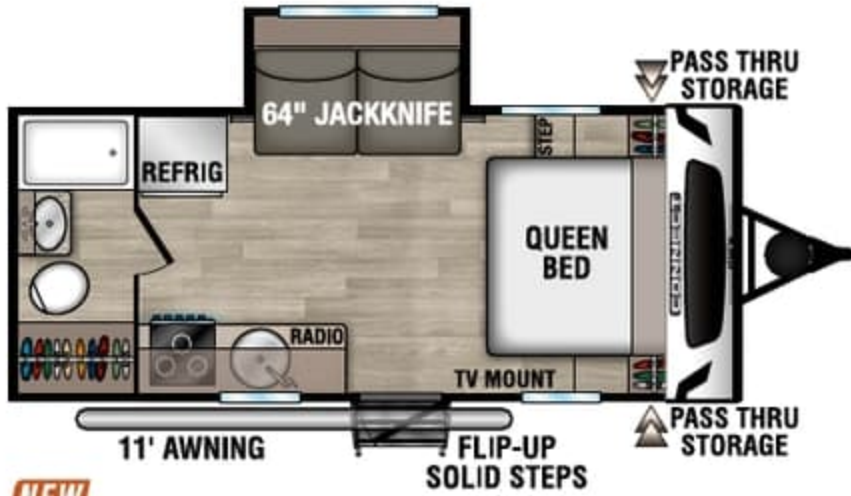
The **RV AIRFLOW SYSTEM** optimizes the airflow in your A/C system by increasing airflow by an average of 40%, which improves performance, speeds cooling times, and reduces noise in the RV.



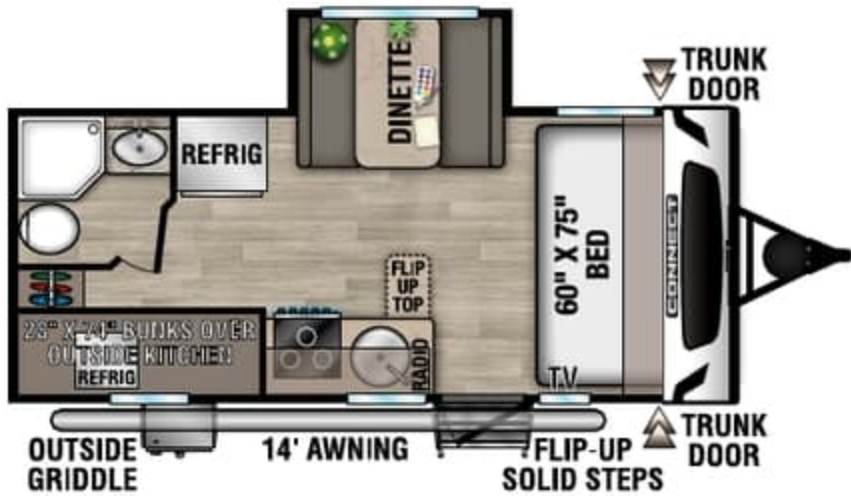
LAMINATED AZDEL COMPOSITE PANELS 50% lighter than wood, no mold, mildew, rotting or warping, unaffected by temperature and humidity changes, superior thermal insulation, superior sound absorption and low VOCs; no formaldehyde.

2024 CONNECT MINI TRAVEL TRAILERS

CM181RB | Nomad décor



NEW
CM181RB UVW - 3,850 | Exterior Length - 22' 1" | Sleeps - TBD



NEW
CM191BHK UVW - 4,040 | Exterior Length - 22' 1" | Sleeps - 5



NEW
CM231BH UVW - 4,600 | Exterior Length - 27' 4" | Sleeps - 8

Introducing the Connect Mini—a lightweight luxury travel trailer brimming with top-tier features, often elusive at this price. With the Connect Mini, even campers with small SUVs can embark on remarkable adventures without compromising on comfort.

Connect Mini Travel Trailers	CM181RB	CM191BHK	CM231BH
UVW (Unloaded Vehicle Weight)*	3,850	4,040	4,600
Dry Hitch Weight*	450	500	640
Dry Axle Weight*	3,400	3,540	3,960
CCC (Cargo Carrying Capacity)	950	760	1,000
GVWR	4,800	4,800	5,600
Interior Height	78"	78"	78"
Exterior Height w/ A/C	10' 5"	10' 5"	10' 5"
Exterior Width	90"	90"	90"
Exterior Length**	22' 1"	22' 1"	27' 4"
Refrigerator (cu. feet)	8	8	8
Water Heater Cap. (on-demand tankless)	***	***	***
Fresh Water Cap. (gal.)	36	36	36
Waste Water Cap. (gal.)	32	32	32
Gray Water Cap. (gal.)	32	32	32
LP Gas Cap. (lbs.)	20	20	20
Furnace BTUs (1,000s)	20	20	20
Tire Size	15"	15"	15"
Awning	11'	14'	18'

*This weight reflects the rolling average unit weight for each model. Your trailer weight will vary according to optional equipment.

** Exterior length is measured from rear of bumper to leading edge of coupler.

***Infinite supply.

2024 CONNECT SE TRAVEL TRAILERS

C312BHKSE | Nomad décor

CONNECT SE KEY FEATURES:

- Exterior docking station
- RV Airflow system
- OneControl monitor/switch panel
- Enclosed dump valves
- Roller shades



BEDSIDE SHELF



Bedroom features LED lighting, pleated nightshades and his-and-hers full-length closets.

Connect SE is the ultimate travel trailer offering spacious floorplans, yet still lightweight enough for the adventure of your dreams. In Connect SE, you'll find that exploration still has all the comforts of home.

Connect SE Travel Trailers	C191MBSE	C211MKSE	C221FKKSE	C221RBSE	C221RESE	C241BHKSE	C241RESE	C251RLSE	C261BHSE	C271BHKSE	C312BHKSE
UVW (Unloaded Vehicle Weight)*	4,700	5,150	5,400	5,400	5,220	5,510	5,630	5,670	6,210	6,120	7,350
Dry Hitch Weight*	600	560	880	720	640	670	650	720	860	830	800
Dry Axle Weight*	4,100	4,590	4,520	4,680	4,580	4,840	4,980	4,950	5,350	5,290	6,550
CCC (Cargo Carrying Capacity)	1,800	1,350	1,600	1,600	1,780	1,490	1,370	1,330	1,790	1,380	1,650
GVWR	6,500	6,500	7,000	7,000	7,000	7,000	7,000	7,000	8,000	7,500	9,000
Interior Height	78"	78"	78"	78"	78"	78"	78"	78"	78"	78"	78"
Exterior Height w/ A/C	10' 10"	10' 10"	10' 10"	10' 10"	10' 10"	10' 10"	10' 10"	11'	11'	10' 10"	11' 2"
Exterior Width	96"	96"	96"	96"	96"	96"	96"	96"	96"	96"	96"
Exterior Length**	22' 6"	26' 1"	26' 8"	27'	27' 1"	29' 1"	29' 2"	29' 7"	32' 9"	32' 1"	36' 7"
Refrigerator (cu. feet)	10	10	10	10	10	10	TBD	10	10	10	10
Water Heater Cap. (on-demand tankless)	***	***	***	***	***	***	***	***	***	***	***
Fresh Water Cap. (gal.)	45	45	45	45	45	45	45	45	45	45	45
Waste Water Cap. (gal.)	32	32	32	32	32	32	32	32	32	32	32
Gray Water Cap. (gal.)	32	32	64	64	32	32	32	32	32	64	32
LP Gas Cap. (lbs.)	40	40	40	40	40	40	40	40	40	40	40
Furnace BTUs (1,000s)	30	30	30	30	30	30	30	30	30	30	30
Tire Size	15"	15"	15"	15"	15"	15"	15"	15"	15"	15"	15"
Awning	14'	18'	18'	16'	18'	18'	20'	19'	20'	20'	19'

*This weight reflects the rolling average unit weight for each model. Your trailer weight will vary according to optional equipment.

**Exterior length is measured from rear of bumper to center of coupler.

***Infinite supply.

2024 CONNECT SE FLOORPLANS



C191MBSE

UVW - 4,700 | Exterior Length - 22' 6" | Sleeps - 2



C211MKSE

UVW - 5,150 | Exterior Length - 26' 1" | Sleeps - 3



C221FKKSE

UVW - 5,400 | Exterior Length - 26' 8" | Sleeps - 2



C221RBSE

UVW - 5,400 | Exterior Length - 27' | Sleeps - 3



C221RESE

UVW - 5,220 | Exterior Length - 27' 1" | Sleeps - 6



C241BHKSE

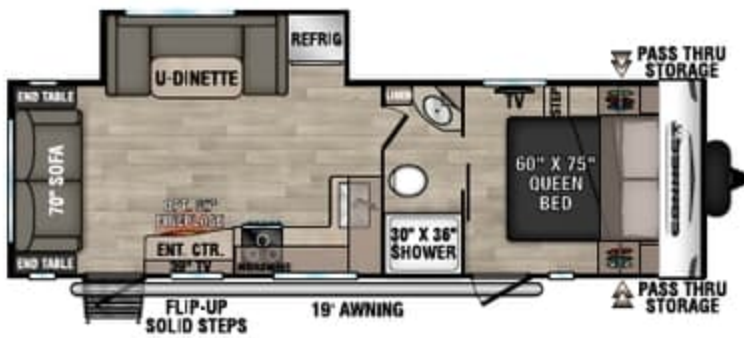
UVW - 5,510 | Exterior Length - 29' 1" | Sleeps - 8



NEW

C241RESE

UVW - 5,630 | Exterior Length - 29' 2" | Sleeps - TBD



C251RLSE

UVW - 5,670 | Exterior Length - 29' 7" | Sleeps - 6



C261BHSE

UVW - 6,210 | Exterior Length - 32' 9" | Sleeps - 9



C271BHKSE

UVW - 6,120 | Exterior Length - 32' 1" | Sleeps - 9



C312BHKSE

UVW - 7,350 | Exterior Length - 36' 7" | Sleeps - 9

2024 CONNECT TRAVEL TRAILERS

C302RBK | Nomad décor



CONNECT KEY FEATURES:

- Exterior docking station
- Enclosed dump valves
- RV Airflow system
- OneControl monitor/switch panel
- 82" Interior ceiling height
- Roller shades

Connect is modern and sleek with an affordable price tag! It comes standard with a king-size bed, residential-size kitchen, and entertainment center.



Multi-Media
ENTERTAINMENT SYSTEM
w/DVD.



His-and-hers sinks in a roomy **BATHROOM** (floorplan specific).

Connect Travel Trailers	C241RLK	C261RB	C262RLK	C272FK	C282FKK	C291BHK	C302FBK	C302RBK	C312RE	C313MK	C322BHK
UVW (Unloaded Vehicle Weight)*	5,860	6,460	6,890	6,900	7,270	6,820	7,820	7,680	7,510	8,470	7,940
Dry Hitch Weight*	620	800	850	820	1,060	810	910	960	930	1,030	930
Dry Axle Weight*	5,240	5,660	6,040	6,080	6,210	6,010	6,910	6,720	6,580	7,440	7,010
CCC (Cargo Carrying Capacity)	1,405	885	1,910	1,900	1,530	1,980	1,400	1,590	2,050	1,322	1,620
GVWR	7,265	7,345	8,800	8,800	8,800	8,800	9,220	9,270	9,560	9,792	9,560
Interior Height	82"	82"	82"	82"	82"	82"	82"	82"	82"	82"	82"
Exterior Height w/ A/C	11' 2"	11' 2"	11' 4"	11' 4"	11' 4"	11' 4"	11' 4"	11' 4"	11' 6"	11' 6"	11' 6"
Exterior Width	96"	96"	96"	96"	96"	96"	96"	96"	96"	96"	96"
Exterior Length**	28' 11"	30' 4"	31' 11"	31' 1"	32' 3"	33' 11"	35' 3"	35' 1"	36' 1"	36' 1"	37' 1"
Refrigerator (cu. feet)	10	10	10	10	10	10	10	10	10	10	10
Water Heater Cap. (on-demand tankless)	***	***	***	***	***	***	***	***	***	***	***
Fresh Water Cap. (gal.)	45	45	45	45	45	45	45	45	45	45	45
Waste Water Cap. (gal.)	32	32	32	32	32	32	32	32	32	32	64
Gray Water Cap. (gal.)	32	64	32	64	64	64	64	64	32	32	32
LP Gas Cap. (lbs.)	40	40	40	40	40	40	40	40	40	40	40
Furnace BTUs (1,000s)	30	30	30	30	30	30	30	30	30	30	30
Tire Size	15"	15"	15"	15"	15"	15"	15"	15"	15"	15"	15"
Awning	18'	19'	19'	20'	18'	20'	20'	20'	19'	13'/11'	10'/11'

*This weight reflects the rolling average unit weight for each model. Your trailer weight will vary according to optional equipment.

**Exterior length is measured from rear of bumper to center of coupler.

***Infinite supply.

2024 CONNECT FLOORPLANS



C241RLK UVW - 5,860 | Exterior Length - 28' 11" | Sleeps - 5



C261RB UVW - 6,460 | Exterior Length - 30' 4" | Sleeps - 5



NEW
C262RLK UVW - 6,890 | Exterior Length - 31' 11" | Sleeps - 5



C272FK UVW - 6,900 | Exterior Length - 31' 1" | Sleeps - 5



NEW
C282FKK UVW - 7,270 | Exterior Length - 32' 3" | Sleeps - 5



C291BHK UVW - 6,820 | Exterior Length - 33' 11" | Sleeps - 10



NEW
C302FBK UVW - 7,820 | Exterior Length - 35' 3" | Sleeps - 5



NEW
C302RBK UVW - 7,680 | Exterior Length - 35' 1" | Sleeps - 5



C312RE UVW - 7,510 | Exterior Length - 36' 1" | Sleeps - 6



C313MK UVW - 8,470 | Exterior Length - 36' 1" | Sleeps - 4



C322BHK UVW - 7,940 | Exterior Length - 37' 1" | Sleeps - 9

2024 CONNECT MINI, SE & CONNECT

2024 CONNECT MINI STANDARDS

- Molded Fiberglass Front Cap w/Windshield
- Hot & Cold Exterior Shower
- 3/8" Fully Walkable Roof
- 1-Piece Tufflex Material w/Lifetime Warranty
- White Exterior Fiberglass
- Quick Connect Gas Line
- 5/8" T&G Plywood Floor
- Flip-up Entry Steps
- Fender Skirts
- Low Pro 13,500 BTU A/C
- Key Alike Program for Baggage & Entry Doors
- Folding Grab Handle
- Spare Tire & Carrier
- (4) Scissor Style Stabilizer Jacks
- Roof Mounted Solar Prep
- Backup Camera Prep
- Nitrogen Filled Tires
- Leash Latch w/Bonus Beverage Opener
- 42,000 BTU Tankless Hot Water Heater
- Painted Hardwood Cabinet Doors
- 17" Oven
- Seamless Countertops
- 8 CU FT 12V Refrigerator
- Roller Shades
- Metal Lav Sink
- Microwave
- Shower Pan & Surround
- 12V Dual USB Port
- Stainless Steel Round Kitchen Sink

2024 CONNECT SE STANDARDS

- (2) 20# LP Bottles w/Bottle Cover
- (4) Stabilizer Jacks
- 13,500 BTU A/C
- 1-Piece, Seamless, Walk-on, Tufflex Roofing Material w/Lifetime Warranty
- 3/8" Fully Walk-On Roof Decking
- 30 AMP Service
- KZ Easy-Catch Baggage Door Systems
- LED Exterior Lighting
- Protective Front Diamond Plate
- Satellite & Cable Hookups
- UVA & UVB Resistant Gelcoat Lamilux® Exterior F/G
- Water Heater Bypass
- Roof Vent in Bath
- Shower Surround
- Skylight over Tub
- High Thread Count Quilted Reversible Queen Bedspread
- LED Interior Lighting
- Linoleum Throughout
- Nightshades
- 3-Burner Range w/Oven
- Hand-Crafted Mortise & Tenon Cabinet Doors
- High-Rise Faucet
- Roller Ball Bearing Drawer Glides

2024 CONNECT STANDARDS

- 3/8" Fully Walk-On Roof Decking
- 1-Piece, Seamless, Walk-on, Tufflex Roofing Material w/Lifetime Warranty
- UVA & UVB Resistant Gelcoat Lamilux® Exterior Fiberglass
- Protective Front Diamond Plate
- KZ Easy-Catch Baggage Door Systems
- LED Exterior Lighting
- Outside Entertainment Prep (EXT 110V & cable outlets)
- (4) Stabilizer Jacks
- (2) 20# LP Bottles w/Bottle Cover
- Satellite & Cable Hookups
- 30 AMP Service (varies by model)
- 13,500 BTU A/C
- 2" Accessory Hitch
- Painted Fiberglass Front Cap w/Front Windshield
- Roof Vent in Bath
- Shower Surround
- Skylight over Tub
- Gas Struts on Bed Base
- High Thread Count Quilted Reversible King Bedspread
- 82" Interior Ceiling Height
- Hand-Crafted Mortise & Tenon Cabinet Doors
- LED Interior Lighting
- Linoleum Throughout
- Roller Shades
- Roller Ball Bearing Drawer Glides
- Water Heater Bypass
- 3-Burner Range w/Oven
- High-Rise Faucet

NOTE: Options and packages can be found on the website

Dealer:

RVIA



CONNECT MINI



CONNECT SE



CONNECT



985 N 900 W SHIPSHEWANA, IN 46565

E: KZ@KZ-RV.COM

WWW.KZ-RV.COM

Due to continual research and advances, manufacturer reserves the right to change specifications, design, price, and equipment without notice, and assumes no responsibility for any error in this literature. Some items shown are not included as standard or optional equipment.

©2023 KZ | 1/16/24 | web