

| | | |
|---|--------------------|---|
| 20 | <i>Super Star</i> |  |
|  | SUPER C MOTORCOACH | |
| 24 | | |





Five-star excellence

The 2024 Super Star is all-new and includes updates and refreshments from front to back. That starts with an updated Freightliner® chassis with additional safety features, a new dash and steering wheel design, and stylistic design changes throughout the coach. What was already a revolutionary Super C gets even more impressive.



Two 15M Penguin™ Heat Pump
Air Conditioners

All Electric Flush Mount
Induction Cooktop

Donette Booth
Williamsburg Sleeper

Freightliner® M2 106 Chassis

Porcelain Tile Flooring

Super Star

Freightliner® M2 106 Chassis



SUPER STAR

37'-40' / 6 floor plans

Cummins® L Engine
360 HP
1150 lb./ft. torque
Croydon Full-Paint
Masterpiece Finish™
Exterior



Cockpit

Redesigned Dash* and New Steering Wheel*

Air Ride Captain's Chairs

Pneumatic Lumbar Support

Skylight

Power Shade

Xite Dash Radio

9" Monitor

Nav-N-Go Navigation

Apple CarPlay®

Harman/JBL 180 Watt Sound System and Subwoofer

Detroit Assurance 5.0 Lane Departure Warning System*

Detroit Assurance Safety System*

Object Detection

Active Brake Assist

Pedestrian Detection

Auto On/Off Headlights

Auto Rain Sense Wipers

Intelligent High Beams

Tire Pressure Monitoring System*

Omniview NS360 Camera System (Optional)

*New for 2024







Floor plan 3731 with Brighton décor and Toffee cabinets

Cabin

**Three Décor Options:
Brighton*, Palisades*, and Saguaro***

Villa Comfort Fit Hide-A-Bed Sofa1**

50" Samsung® 4K LED TV
Bose® Soundbar

Power Stepwell Cover

Porcelain Tile Flooring¹

Window Treatments¹



*New for 2024
**See Features & Options for all available furniture configurations
¹Newly styled for 2024

Cabin

Slideout Fascia and Feature Ceiling*

Wall Sconces*

**Two 15K BTU Penguin™ Heat Pump
Air Conditioners**

**WiFiRanger Everest System
with Aspen Router (Optional)**

Central Monitor Panel

Mobile App
(to control elements of the coach)



Floor plan 3731 with Brighton décor and Toffee cabinets





Galley & Dinette

All Electric Flush Mount Induction Cooktop

Convection Microwave

19.7 Cu. Ft. Whirlpool® Refrigerator

Dishwasher in a Drawer (Optional)

Glazed Maple Hardwood Cabinets

Available in Four Matte or High Gloss Finish Color Options

Soft-Close Drawers

Undermounted LED Lights

Pantry

Pull-Out Shelves

Push-to-Release Drawer Slides

Polished Solid-Surface Countertops

Tile Backsplash*

Booth Dinette Sleeper**



**Newly styled for 2024*

***Additional dinette configurations available; see Features & Options for details*







Bedroom

Queen Bed* with Pillow Top Mattress

Adjustable Support Air Bed (Optional)

Samsung® 4K LED TV

Bedroom Speakers

Lighted Wardrobe

Safe (Optional)

Dimmable Reading Lights



*Bed sizes vary by floor plan, see Floor Plans for more details

Bathroom

**Sentrel™ Acrylic Shower Walls
with Glass Door***

Vanity, Backsplash, and Hardware**

Polished Solid-Surface Countertops

Aqua Miser® Shower System

150-Gallon Fresh Water Tank

Linen Cabinet





SUPER STAR



Exterior & Storage

**Industry-Exclusive Full-Paint
Masterpiece Finish™ with Cut and Buff**

New Exterior Design and Color Combinations*

Girard® Nova Side Awnings (Optional)

Power Baggage Door Locks

Lighted Exterior Storage Compartments

Dometic® Freezer on Pull-Out Tray
(Optional)

Exterior Entertainment Center (Optional)

43" Samsung® LED TV

Bose® Soundbar



Exterior

Rear Cap Storage

Exterior Shower

**8.0 kW Cummins Onan®
Diesel Generator**

10 Watt Solar Panel
(to charge chassis battery)





SUPER STAR

interior & exterior
Design Options



Bolton



Awning Color: Charcoal Tweed

BRIGHTON INTERIOR a. Furniture/Fabric b. Flooring c. Counter Top



*Exterior colors and interior décor options can be matched to customer preference.

CABINET FINISHES



*Available in High Gloss or Matte Finish

Croydon

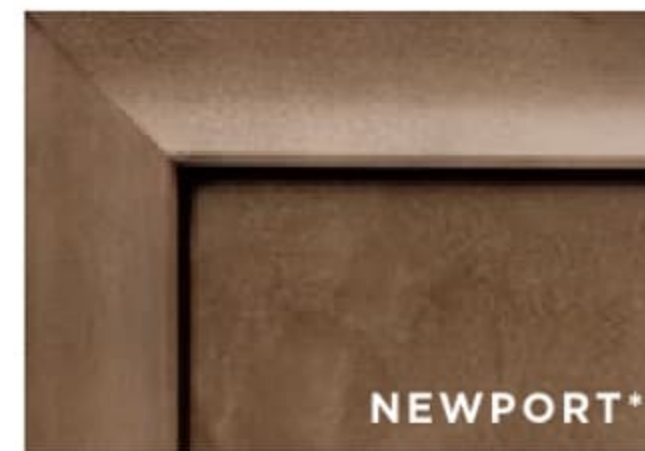


Awning Color: Charcoal Tweed

PALISADES INTERIOR a. Furniture/Fabric b. Flooring c. Counter Top



CABINET FINISHES



*Exterior colors and interior décor options can be matched to customer preference.

*Available in High Gloss or Matte Finish

Wilton



Awning Color: Charcoal Tweed

SAGUARO INTERIOR a. Furniture/Fabric b. Flooring c. Counter Top



*Exterior colors and interior décor options can be matched to customer preference.

CABINET FINISHES

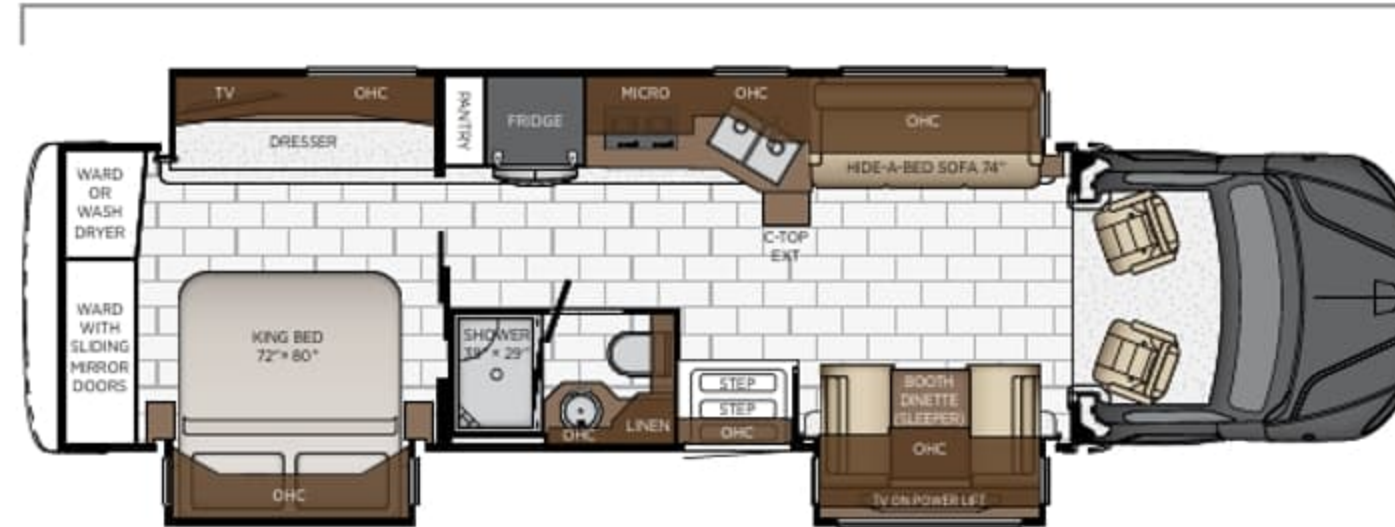


*Available in High Gloss or Matte Finish

Floor Plan Specifications



Length: 37' 11"



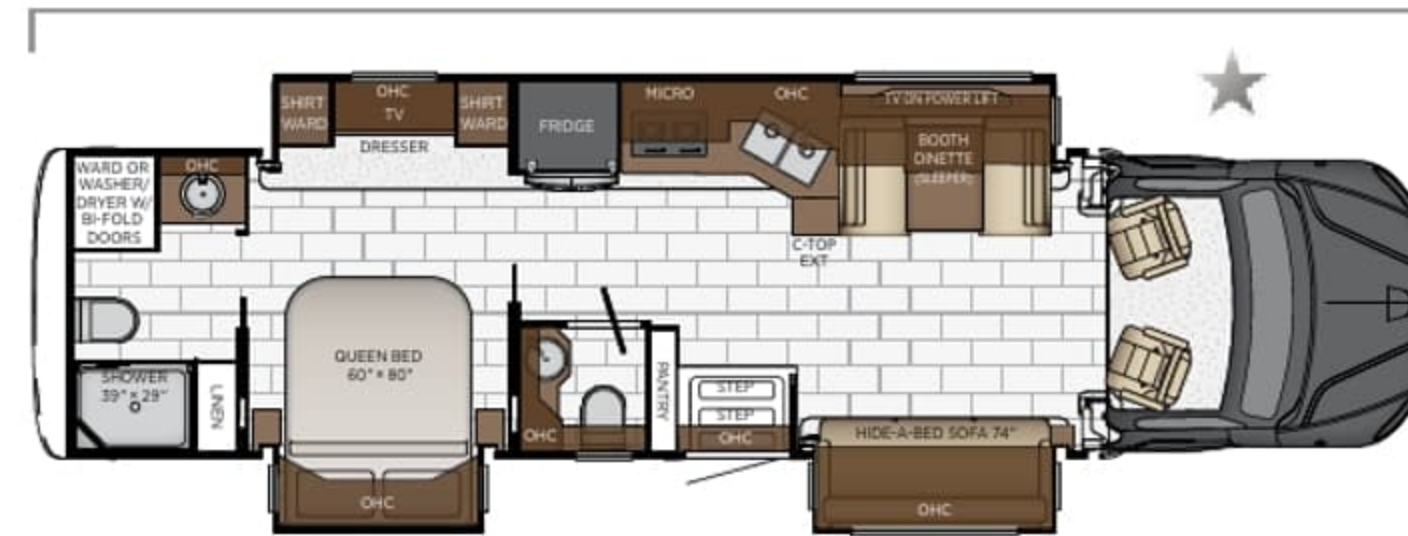
| | | | | |
|-------------|---------------------|---------|--------------|------------|
| 3727 | Length | 37' 11" | Grey Tank | 60 gal. |
| | Width | 101.5" | Sewage Tank | 40 gal. |
| | App. Overall Height | 13' 0" | Water Tank | 150 gal. |
| | Interior Width | 95.5" | Propane Tank | 0 gal. |
| | Interior Height | 83" | Furnace | 50,000 btu |

Length: 37' 11"



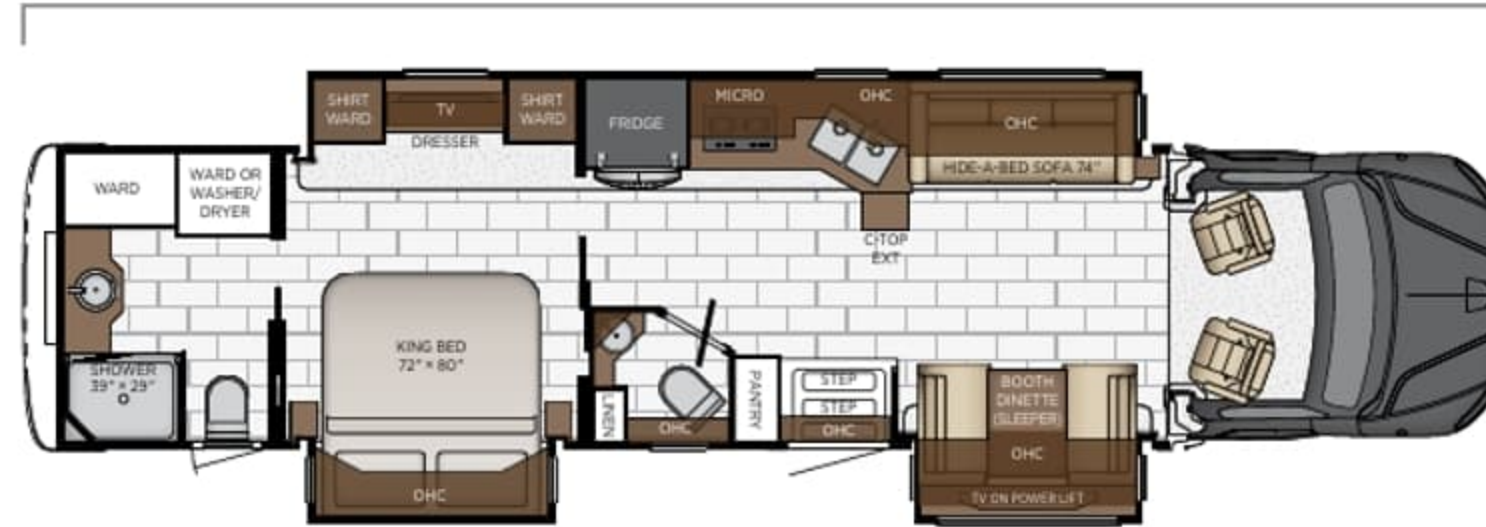
| | | | | |
|-------------|---------------------|---------|--------------|------------|
| 3729 | Length | 37' 11" | Grey Tank | 60 gal. |
| | Width | 101.5" | Sewage Tank | 40 gal. |
| | App. Overall Height | 13' 0" | Water Tank | 150 gal. |
| | Interior Width | 95.5" | Propane Tank | 0 gal. |
| | Interior Height | 83" | Furnace | 50,000 btu |

Length: 37' 11"



| | | | | |
|-------------|---------------------|---------|--------------|------------|
| 3731 | Length | 37' 11" | Grey Tank | 60 gal. |
| | Width | 101.5" | Sewage Tank | 40 gal. |
| | App. Overall Height | 13' 0" | Water Tank | 150 gal. |
| | Interior Width | 95.5" | Propane Tank | 0 gal. |
| | Interior Height | 83" | Furnace | 50,000 btu |

Length: 40' 11"



4059

| | |
|---------------------|---------|
| Length | 40' 11" |
| Width | 101.5" |
| App. Overall Height | 13' 0" |
| Interior Width | 95.5" |
| Interior Height | 83" |

| | |
|--------------|------------|
| Grey Tank | 60 gal. |
| Sewage Tank | 40 gal. |
| Water Tank | 150 gal. |
| Propane Tank | 0 gal. |
| Furnace | 50,000 btu |

Length: 40' 11"

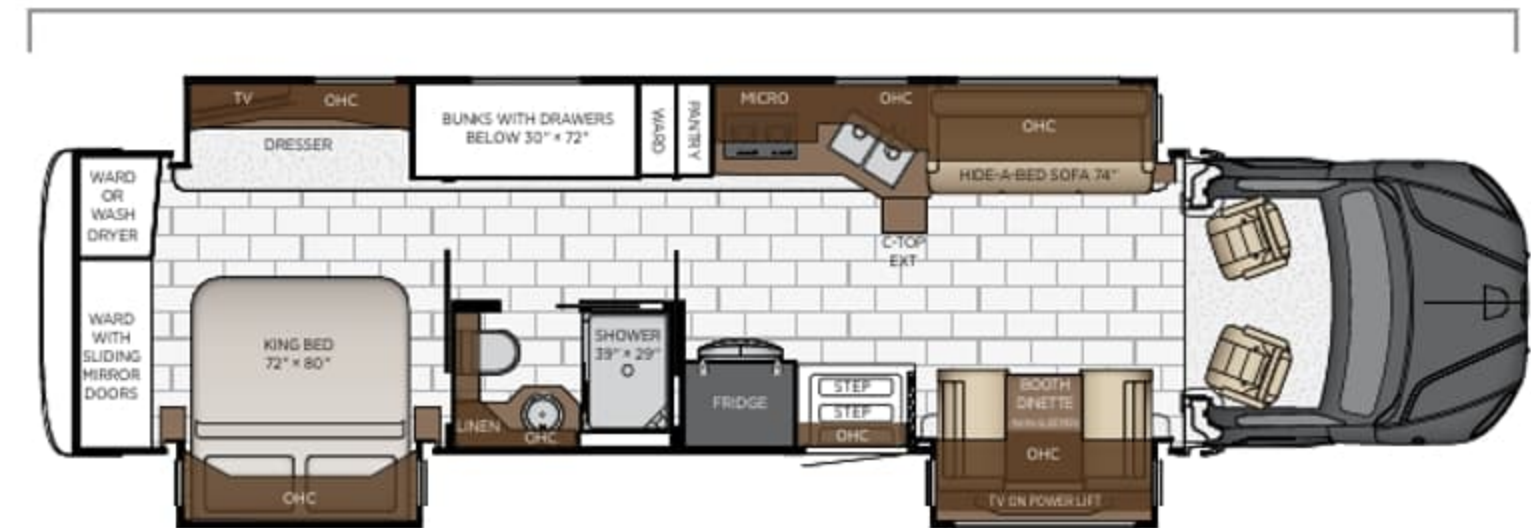


4061

| | |
|---------------------|---------|
| Length | 40' 11" |
| Width | 101.5" |
| App. Overall Height | 13' 0" |
| Interior Width | 95.5" |
| Interior Height | 83" |

| | |
|--------------|------------|
| Grey Tank | 60 gal. |
| Sewage Tank | 40 gal. |
| Water Tank | 150 gal. |
| Propane Tank | 0 gal. |
| Furnace | 50,000 btu |

Length: 40' 11"



4065

| | |
|---------------------|---------|
| Length | 40' 11" |
| Width | 101.5" |
| App. Overall Height | 13' 0" |
| Interior Width | 95.5" |
| Interior Height | 83" |

| | |
|--------------|------------|
| Grey Tank | 60 gal. |
| Sewage Tank | 40 gal. |
| Water Tank | 150 gal. |
| Propane Tank | 0 gal. |
| Furnace | 50,000 btu |

Quality You Can Feel

Like a fine home, the 2024 Super Star is framed 16 inches on center, and is covered by a fiberglass roof with an integrated gutter rail.

| FREIGHTLINER® | | | | | | | | | | | |
|---------------|-----------|------------|-----------|------------|------------|-----------|----------|-----------|-----------|-----------|----------|
| FLOOR PLAN | ENGINE HP | AXLE RATIO | FUEL CAP. | WHEEL BASE | FRONT GAWR | REAR GAWR | TAG GAWR | GVWR | GCWR | APP. UVW | APP. NCC |
| 3727 | 360 | 4.89 | 100 gal. | 320 | 16000 lb. | 24000 lb. | n/a | 40000 lb. | 60000 lb. | 33500 lb. | 6500 lb. |
| 3729 | 360 | 4.89 | 100 gal. | 320 | 16000 lb. | 24000 lb. | n/a | 40000 lb. | 60000 lb. | 34000 lb. | 6000 lb. |
| 3731 | 360 | 4.89 | 100 gal. | 320 | 16000 lb. | 24000 lb. | n/a | 40000 lb. | 60000 lb. | 34000 lb. | 6000 lb. |
| 4059 | 360 | 4.89 | 100 gal. | 345 | 17200 lb. | 24000 lb. | n/a | 41200 lb. | 60000 lb. | 34500 lb. | 6700 lb. |
| 4061 | 360 | 4.89 | 100 gal. | 345 | 17200 lb. | 24000 lb. | n/a | 41200 lb. | 60000 lb. | 34000 lb. | 7200 lb. |
| 4065 | 360 | 4.89 | 100 gal. | 345 | 17200 lb. | 24000 lb. | n/a | 41200 lb. | 60000 lb. | 34300 lb. | 6900 lb. |

SUPER STAR

The content in our literature depicts and describes products that are subject to change. For the most recent images and information, please visit NewmarCorp.com.

Lengths, heights, widths, and dry weights are approximate. Weight will vary based on optional equipment added to the above base weight.

GAWR: Gross Axle Weight Rating is the maximum permissible weight for an axle.

GVWR: Gross Vehicle Weight Rating is the maximum permissible weight for a fully loaded motor coach.

GCWR: Gross Combination Weight Rating is the value specified by the manufacturer of the vehicle as the maximum allowable loaded weight of this motor coach and any towed trailer or towed vehicle.

UVW: Unloaded Vehicle Weight is the weight of this motor coach as built at the factory with full fuel, engine oil, and coolants. Does not include cargo, fresh water, propane gas, or dealer-installed accessories.

NCC: Net Carrying Capacity is the maximum weight of all occupants, including the driver, personal belongings, food, fresh water, waste water, propane gas, tools, tongue weight of towed vehicle, dealer-installed accessories, etc., that can be carried by the motor coach.

Specifications supplied by the chassis manufacturer.

Super Star R-Values:

Roof R-Value = 19

Sidewall R-Value = 11

Floor R-Value = 16

Basement R-Value = 4



SUPER STAR

Features & Options



EXTERIOR FEATURES

Exterior Full-Paint Masterpiece™ Finish Graphics with Clearcoat Finish

Diamond Shield Protection on Front Cap

Convex Exterior Mirrors with Defrost and Remote Control

Chrome Exterior Mirrors

Automatic Triple Entrance Step-Hydraulic

Assist Handle at Entrance Door

Mud Flaps

Rear Protective Tow Guard with Stainless Steel Newmar Letters

Undercoating

Hydraulic Leveling Jacks

Stainless Steel Exterior Trim Pieces on Rear Cap

Painted Power Baggage Door Locks, Keyless Entrance Door with Touch Pad and Doorbell

Power Lock Cockpit Doors

Rear Cap Storage

OPTIONS

Chrome Power Baggage Door Locks

Flag Pole Bracket

Stainless Steel Trim Kit for Exterior Compartment Doors

Storage Tray 27" X 56" Non-Power, Location-Bay 5

Storage Tray 31½" X 59" Non-Power, Location-Bay 5

Storage Tray 31½" X 59" Non-Power, Location-Bay 6

CONSTRUCTION FEATURES

Gelcoated Fiberglass Exterior Sidewalls, Front and Rear Caps

Fiberglass Roof and Integrated Gutter Rail

Aluminum-Frame Sidewalls and Roof Construction, 16" on Center

5/8" Foam Insulation Laminated in Sidewalls and Ceiling

Automatic Mechanical Lock Arms on Slideout Rooms-Scissor Style

Egress Door with Ladder System*

Polar Pak R19 Batten Insulation in Roof

Rack and Pinion Flat Floor Slide

WINDOWS, AWNINGS, & VENTS

Frameless Double-Pane Tinted Safety-Glass Windows

Fan-Tastic® Vent with Rain Sensor in Kitchen and Bathroom

Skylight Above Shower

Girard® G2000 Integrated Side Awning

Carefree Slideout Cover

Driver and Passenger Power Window

Sky Window in Cockpit with Power Shade

Bunk Windows*

OPTIONS

Carefree Window Awning Package of (3), 1-Bedroom, 1-Off Door Side Living Room, 1-Door Side Living Room

Kitchen Window*

Two Girard® Nova Side Awnings

CHASSIS FEATURES

100 Gallon Fuel Capacity

20K Rear Hitch for Towing with 2" Reducer and Drawbar with 2" and 2-5/16" Ball

Aluminum Wheels

Cruise Control

Manual Tilt and Telescope Steering Wheel

Anti-Lock Braking System

Chassis Battery Disconnect

Single Rear Axle

Standard M-2 106 Chassis Cummins 360 L Engine 320" Wheel Base, 24000# Rear Axle

Standard M-2 106 Chassis Cummins 360 L Engine 345" Wheel Base, 24000# Rear Axle

D.A.S.S.-Auto On/Off Headlights, Intelligent High Beams, Auto Rain Sense Wipers

D.A.S.S.-Object Detection, Active Brake Assist, Pedestrian Detection

AIR CONDITIONING & HEATING

Two 15k BTU Penguin™ Heat Pump Air Conditioners

Chinook Dual Loop Heat with Continuous Hot Water

Dash Heater and Air Conditioner

Roof Air Conditioning Drainage System

Wall Mounted Sensors for Heating and Air Conditioning

ELECTRICAL FEATURES

8.0 kW Cummins Onan® Diesel Quiet Series Generator

50 Amp Electrical Service with Flexible Cord with Automatic Transfer Switch

Eight 6-Volt House Batteries

Battery Disconnect Switch for House Battery

10 Watt Solar Panel to Charge Chassis Battery

12 Volt Auxiliary Receptacle on Dashboard

Engine Block Heater

Exterior Security Light (One) Installed on Doorside

LED Lights Recessed in Ceiling and Underneath Overhead Cabinets

| |
|--|
| Manually Operated Hold-To-Run Slideout Switch |
| Cable TV Connection |
| Interior Courtesy Lights |
| Lights in Exterior Storage Compartments |
| USB Outlet at Dinette and Bedroom Night Stand |
| Spare Fuses in Chassis and House Fuse Panels |
| Automatic Generator Start on Low Battery or Temperature Setting |
| Energy Management System |
| Multiplex Monitor System 10.1" in Center of Coach with Interior Lighting and HVAC Controls |
| Dimmable and Adjustable Reading Lights at Head of Bed |
| 110 Volt Recept in Bed Overhead with Two Pass-Through Ports |
| 110V/USB Outlet at Head of Each Bunk Area* |
| Power Rewind Reel with 50' Cord |
| Lights in Wardrobes |
| Connected Solutions App |

| |
|---|
| OPTIONS |
| Solar Prep with Six Gauge Wire Ran from the Roof to the House Battery Compartment |
| Four Flexible 110 Watt Solar Panels on Roof |
| Transfer Switch with Surge Protector |
| Cord Connection 30 Amp/120 Volt for Stacker Trailer |
| Exterior Security Lights, Two Doorside, Two Off Doorside and One Rear |

PLUMBING & BATH FEATURES

| |
|---|
| Demand Water System |
| Sewage Holding-Tank Rinse |
| Dometic® 321 China Bowl Stool or Macerator Stool* |
| Sentrel™ Acrylic Shower Walls with Glass Door |
| Water Filter for Entire Unit |
| Exterior Shower |
| Auto Fill in Water Works Compartment |
| Power Water Hose Reel |
| Aqua Miser® Shower System |
| 12 Volt Dump Valves |
| 150 Gallon Fresh Water Tank |

| |
|---|
| OPTIONS |
| Fold-Down Shower Seat |
| Hot Water Line Run to Front Door Side Storage Bay |

INTERIOR FEATURES

| |
|--|
| Designer Feature Ceiling |
| Tile Floor in Kitchen, Bathroom and Living Areas |
| Carpeting on Slideout Floors |
| MCD Window Shades |
| Hardwood Slideout Fascia |
| Decorative Wall Art |
| Inlaid Three Panel Design Interior Passage Doors |
| Interior Assist Handle at Main Entry Door |
| Power Stepwell Cover |
| Fitted with Round Corner Non-Quilted Bedspread with Accent Pillows |
| Removable Transport Pads for Under Slideout Rollers |
| Wastebasket in Kitchen Base Under Sink |

| |
|---|
| OPTIONS |
| Safe Located in Bedroom Wardrobe |
| Electric Radiant Heat Below Main Floor Tile |

CABINETS & FURNITURE

| |
|--|
| Bermuda Glazed Maple Hardwood Mitered Flat Designer Doors-Matte Finish |
| Air Ride Driver and Passenger Seats with Pneumatic Lumbar |
| Concealed Hinges on Cabinet Doors |
| Polished Solid-Surface Countertop in Kitchen with Under Mounted Stainless Steel Sink and Sink Covers |
| Polished Solid-Surface Countertop in Bathroom and Bedroom |
| Cooktop Cover Flush, Matching Countertop Material |
| Lifts on Bed Top |
| Pull-Out Pantry Shelves* |
| Push-to-Release Drawer Slides in Pantry |
| Ultrafabric Sofa |
| Plush Pillow Top Mattress |
| Extended Rotation Concealed Hinge for Washer and Dryer Cabinet Door |
| Mesh Cell Phone Holder at Each Bunk Bed* |
| Molded Silverware Divider Tray |
| Soft-Close Cabinet Drawers |
| Dinette Booth Williamsburg Sleeper |
| Villa Comfort Fit Furniture |
| Bed Base Power Incline Retract-Eliminates Bed Side Windows on 3729 Floor Plan |

| |
|--|
| OPTIONS |
| Toffee Glazed Maple Hardwood with Mitered Flat Designer Doors-High Gloss or Matte Finish |

| |
|---|
| Glacier Glazed Maple Hardwood with Mitered Flat Designer Doors-High Gloss or Matte Finish |
| Newport Glazed Maple Hardwood with Mitered Flat Designer Doors-High Gloss or Matte Finish |
| Bermuda Glazed Maple Hardwood with Mitered Flat Designer Doors-High Gloss Finish |
| Buffet Dinette with Free Standing Table with Two Fixed and Two Folding Chairs |
| Buffet Dinette with Two Fixed and Two Folding Chairs |
| Euro Booth Dinette with Two Table Leaves, Removable Table Leg and Two Folding Chairs |
| Dinette Hide-A-Leaf Table with Two Fixed and Two Folding Chairs |
| R5 Radius Corner Air Mattress |
| Two Recliners, Lampstand, Reading Lights |
| Hide-A-Bed |
| Powered Theater Seating 74" with Reading Lights, Off Door Side, Euro Booth Dinette 38" |
| Powered Theater Seating 74" with Reading Lights, Off Door Side, Sleeper Booth Dinette 38" |
| Powered Theater Seating 74" with Reading Lights, Off Door Side, Hide-A-Leaf Table with Two Fixed and Two Folding Chairs |
| Powered Theater Seating 87" with Reading Lights |
| 74" Jackknife Sofa |

APPLIANCES & ACCESSORIES

| |
|--|
| All Electric Flush Mount Induction Cooktop |
| Whirlpool® 19.7 Cu. Ft. Refrigerator |
| 2800W Pure Sine Inverter |
| Hydronic Heat |
| Air Horns |
| Prep for Two-Piece Washer and Dryer |
| Central Vacuum with Tool Kit |

OPTIONS

| |
|---|
| Splendide® Two-Piece Stacked Washer and Dryer |
| 110 Volt Heat Pads for Holding Tanks |
| Dishwasher in a Drawer with Stainless Steel Front |
| Freezer on Pull-Out Tray in Exterior Compartment |

AUDIO, VIDEO & ACCESSORIES

| |
|---|
| Samsung® LED 4K TV and DVD Player in Living and Bedroom Areas* (TV Sizes Vary Per Floor Plan) |
| Samsung® 50" LED 4K TV on Televator in Living Area* |
| Xite Dash Radio with Apple CarPlay® with 9" Monitor with Nav-N-Go Navigation System |
| Bose® Solo Soundbar System |
| Side-View Cameras Displayed onto Radio Monitor Screen |
| Winegard Digital Crank-Up TV Antenna |
| Satellite Dish Prep on Roof |
| Two Bedroom Radio Speakers |
| TV Jack and 110 Volt Recept in Door Side Exterior Storage Compartment |
| 10 Bc Fire Extinguisher, Smoke Detectors, Propane and Carbon Monoxide Detector |
| CAT 6 TV Cables |
| CB Prep with Antenna |
| Harman/JBL 180 Watt Sound System and Subwoofer |
| Bose® Soundbar Sound System |

OPTIONS

| |
|--|
| SiriusXM® Radio Capability with Antenna (Does Not Include Monthly Subscription) |
| Exterior Entertainment Center in Storage Compartment with Samsung® 43" LED TV and Bose® Soundbar |
| Prep for Ground Tripod Satellite Dish on Off Door Side with A/B Switch |
| Winegard Automatic Dome Satellite Dish-for DISH STD/HD, DIRECTV STD and Bell Canada |
| Winegard Automatic Open Face Satellite Dish-for DISH HD and Bell HD TV |
| Winegard Automatic Open Face SWM Satellite Dish-for DIRECTV STD/HD |
| Winegard Rayzar Automatic Digital TV Antenna |
| WiFiRanger Denali/Spruce LTE |
| WiFi System Everest with Aspen Interior Router |
| Universal Remote Control |
| Universal Toll Module |
| Two 19" Skyworth TV/DVD Monitors at Each Bunk* |
| Omniview NS360 Camera System* |

*Check with dealership on floor plan availability





A. ROOF

Fiberglass Roof
 Batten Insulation
 A/C Ducting
 16" on Center Aluminum Rafter Framing
 Kraft Paper Vapor Barrier
 5/8" Bead Foam
 3/16" Panel
 Padded Vinyl Overlay

B. SIDEWALL

Interior Wall Panel
 5/8" Bead Foam
 Kraft Paper Vapor Barrier
 Batten Insulation
 Composite One-Piece
 Gelcoat Exterior Sidewall
 Aluminum Framing

C. FLOOR

Carpet/Tile
 Carpet Padding
 5/8" Floor Decking
 Batten Insulation
 16" on Center Wood Framing
 Polyethylene Moisture Barrier

D. EXTERIOR

15K BTU Penguin™ Heat Pump Central
 Air Conditioner
 One-Piece Bonded Windshield
 Coated Aluminum Wheels
 Frameless, Double-Pane,
 Tinted Safety Glass Windows
 Side-Hinged Baggage Doors with
 Optional Pull-Out Tray

The Newmar Customer Experience

The Newmar Difference™ goes beyond our industry-leading motor coaches to provide you with an unrivaled ownership experience.



Quality from the Start

Every Newmar is crafted one at a time by folks who have spent an average of eight years building them. And each coach we assemble must undergo more than 1,000 tests and checks before ever leaving our factory.



Carefully Selected Dealers

We view our dealership network in terms of quality, not quantity. Each of our dealers acts as a partner in our shared mission to exceed your highest of expectations, for an ownership experience that's second to none from day one.



Everything in One Place

As a Newmar owner, you'll find resources specific to your coach through Newgle, an easy-to-use knowledge base that houses everything from user guides to technical support documents.



Friends for Life

Meet fellow owners through the Newmar Kountry Klub, a top social club for RV travelers that hosts rallies and other special events throughout the U.S. and Canada.



Seamless Service

When you join the Newmar family, we pair you with a dedicated service specialist with expert knowledge of your exact coach. Our service specialists guarantee dealer warranty authorizations within four business hours and ship all in-stock parts the same day, free of charge.



Rock-Solid Protection

All models include a one-year/unlimited mileage limited warranty and a five-year, non-transferable structural warranty that covers your coach's superstructure in the event it fails to perform. Ask your Newmar dealer for more details.

Our Partners

The Newmar Difference™ begins with suppliers dedicated to providing our customers with unrivaled quality, comfort, and support.



BASF

The Coatings division of BASF is a global expert in the development and production of innovative and sustainable OEM and refinish coatings. Coatings by BASF—solutions beyond your imagination.



Industrial Finishes

Industrial Finishes has supported RV manufacturers for over four decades, offering paint products that deliver uncompromising quality and provide your coach with a true Masterpiece™ finish.



Driven By You

Freightliner Custom Chassis

Freightliner Custom Chassis are renowned for their exceptional ride, excellent maneuverability, advanced technology, and nationwide 24/7 factory-direct support.



RiverPark

From Samsung® 4K TVs and Xite Infotainment systems to Bose® soundbars and JBL and Infinity premium audio systems, RiverPark helps you experience a higher level of technology in your Newmar coach.



Spartan RV Chassis

An American company with over 30 years of experience in designing and manufacturing the premier motorhome chassis, Spartan delivers superior performance, exceptional safety ratings, and industry-leading technology.



WHEN YOU KNOW THE DIFFERENCE™