

EXPLORER

2024



Renegade
RV

EXPLORER

ELEVATED CRAFTSMANSHIP AND INNOVATIVE DESIGN UNITE TO CREATE THE RENEGADE EXPLORER. THE EXPLORER FEATURES AN ALLISON TRANSMISSION AND A 525-HP, 13-LITER ENGINE. WHATEVER ADVENTURE LIES AHEAD, THE EXPLORER WILL GIVE YOU THE DRIVING POWER YOU NEED TO GET YOU TO YOUR DESTINATION SAFELY AND COMFORTABLY. THE EXPLORER'S INTERIOR IS BEAUTIFULLY DESIGNED TO INCLUDE TILE FLOORS, HARDWOOD MAPLE CABINETRY, AND SLEEK ULTRASOFT FURNITURE.



CABINETS



ROCKPORT



LAKWOOD



CAPE COD



Featured here is the Explorer 40ERB in our Rainier decor with beautiful Lakewood cabinetry.



INTERIOR DECORS



AT A GLANCE



EXTERIOR HEIGHT	13' 2"
EXTERIOR WIDTH	99 1/4"
EXTERIOR LENGTH	38'6" - 40' 5"
INTERIOR HEIGHT	84"
INTERIOR WIDTH	95 1/2"

FUEL CAPACITY	120 GALLONS
DEF CAPACITY	13 GALLONS
FRESH WATER CAPACITY	150 GALLONS
GREY WATER CAPACITY	75 GALLONS
BLACK WATER CAPACITY	75 GALLONS

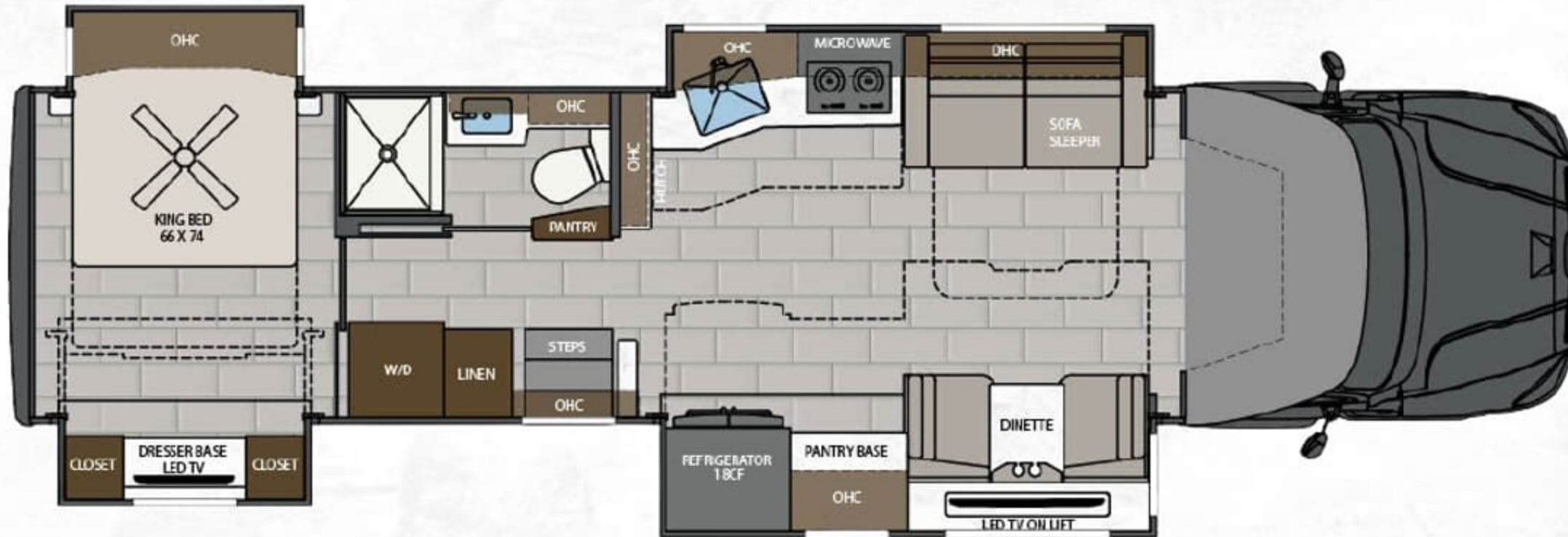
KEY FEATURES

- ALLISON® TRV4000 TRANSMISSION
- MULTIPLEX SYSTEM WITH COLOR TOUCH PANEL AND BLUETOOTH APP CONTROL
- FULL BODY PAINT TREATMENT IN 7 SCHEMES
- FOUR-POINT AUTOMATIC HYDRAULIC LEVELING SYSTEM
- GIRARD® VISION™ INTEGRATED ROOFTOP AWNING W/LED LIGHTS
- SOLID HARDWOOD MAPLE CABINETS AND SOLID SURFACE COUNTERTOPS

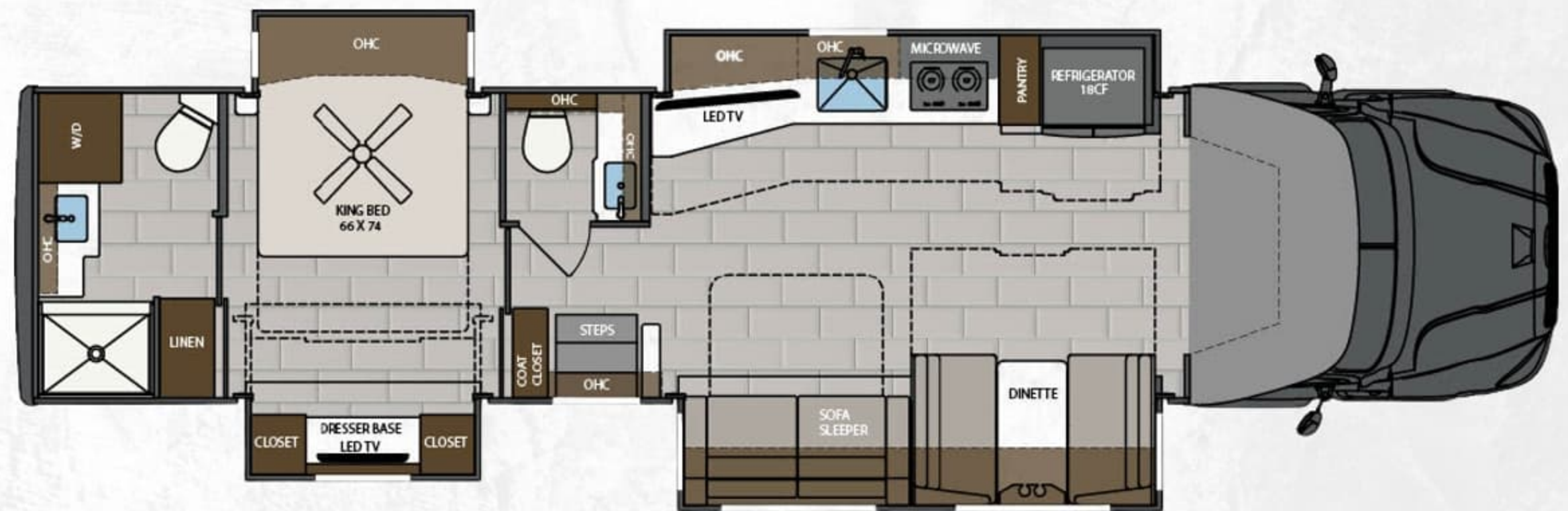


EXPLORER

FLOORPLANS



38EMB | 38' MID BATH, 4 SLIDES

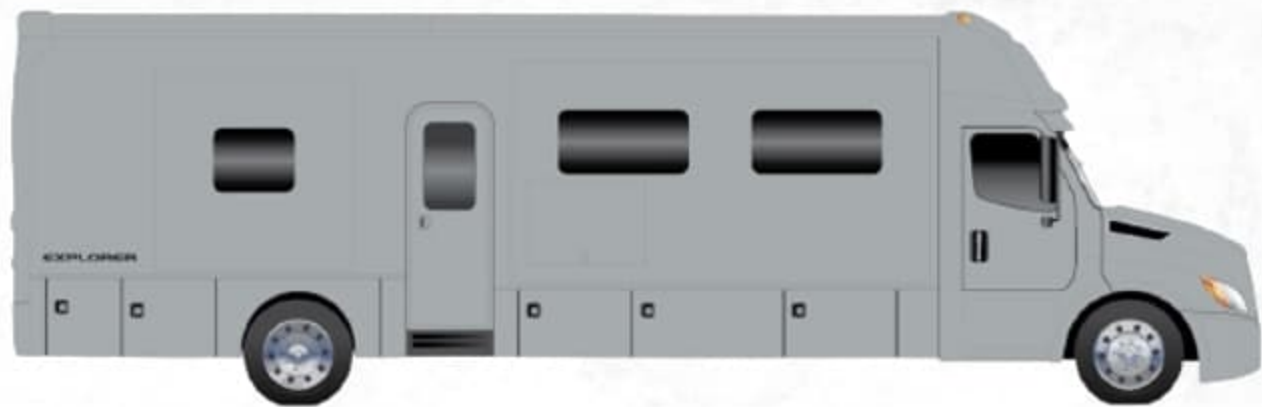


40ERB | 40' MID AND REAR BATH, 4 SLIDES

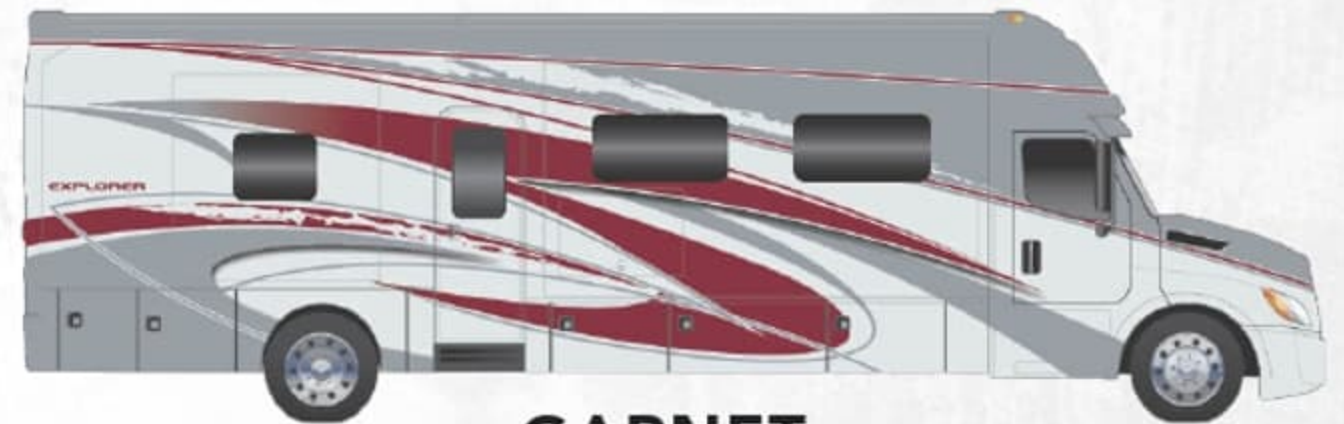
PAINT OPTIONS



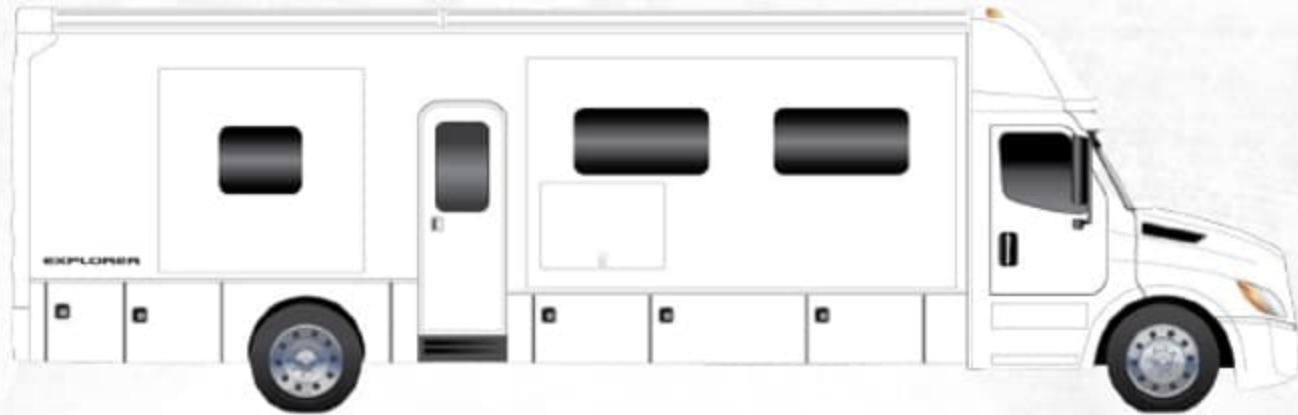
COASTAL FOG



POLARIS



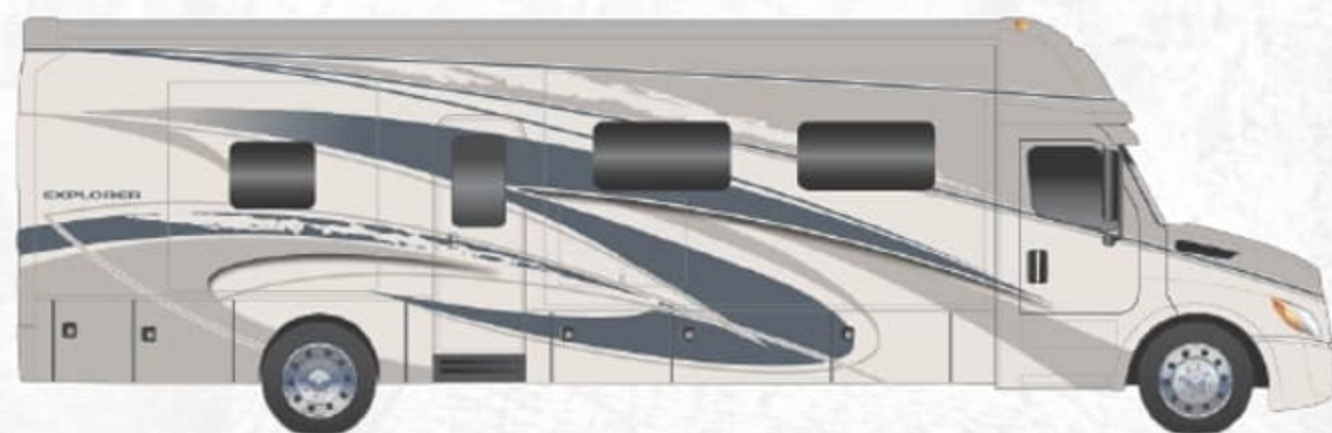
GARNET



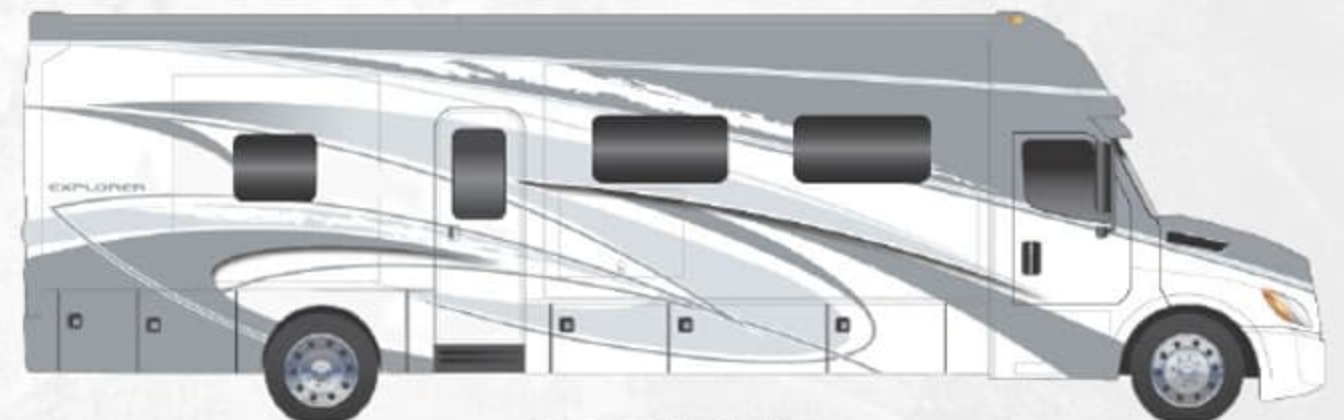
TUNDRA



MIDNIGHT



QUARRY



STRATUS

CAB/CHASSIS

- FREIGHTLINER® CASCADIA 116 SINGLE AXLE
- DETROIT® DD13 ENGINE WITH 525HP, 1,850 FT. LB. TORQUE
- 41,000 LBS. GVWR
- ALLISON® TRV4000 ELECTRONIC 6-SPEED TRANSMISSION
- 20,000 LB. TOWING CAPACITY
- SINGLE 120-GALLON ALUMINUM FUEL TANK
- 13 GALLON DEF TANK
- POLISHED ALUMINUM WHEELS WITH CENTER CAPS
- AIRLINER® REAR AIR SUSPENSION
- DIGITAL DASH CLUSTER AND 10" INFOTAINMENT SYSTEM
- REAR AND SIDE VIEW CAMERAS
- UPGRADED CAB SOUND SYSTEM
- PREMIUM FREIGHTLINER® SOUND AND THERMAL INSULATION PACKAGE
- LED HEADLIGHT WITH BUMPER INTEGRATED FOG LIGHTS
- POWER WINDOWS AND DOOR LOCKS
- POWER/HEATED REMOTE CONTROL MIRRORS
- AIR RIDE DRIVER AND PASSENGER SEAT PEDESTALS WITH SWIVELS
- SOFT TOUCH DRIVER/PASSENGER SEATS WITH ARMRESTS
- FULL CAB MAT
- AUXILIARY AIR CHUCK AND HOSE
- FREIGHTLINER® SAFETY ASSURANCE PACKAGE:
 - COLLISION MITIGATION
 - ADAPTIVE CRUISE CONTROL
 - LANE DEPARTURE WARNING
 - DETROIT CONNECT SAFETY EVENT VIEWER PACKAGE

EXTERIOR

- AERODYNAMIC FIBERGLASS FRONT AND REAR CAPS AND TRANSITION
- FOUR-POINT HYDRAULIC LEVELING SYSTEM WITH APP
- LIGHTED EXTERIOR ENTRY DOOR ASSIST HANDLE
- KEYLESS ENTRY
- POWERED FOLDING DOUBLE ENTRY STEPS
- (7) COLORWAY PAINT OPTIONS
- ROOF MOUNTED GIRARD® 2-STAGE LATERAL ARM AWNING WITH LED LIGHTS INTEGRATED INTO FRONT AND REAR FIBERGLASS CAPS
- SLIDE TOPPERS
- FRAMELESS DUAL-PANE TINTED WINDOWS WITH SCREENS
- POWER LOCKING, SIDE-SWING ALUMINUM COMPARTMENT DOORS WITH SINGLE HANDLE PADDLE LATCHES AND DOUBLE CATCH
- STEEL STORAGE COMPARTMENTS WITH CARPETED LINING
- DIAMOND SHIELD® NANO-FUSION™ PAINT PROTECTION (FRONT MASK)
- FULL-WIDTH ROCKGUARD MUDFLAP
- UNDERCOATING

CONSTRUCTION

- 2" VACUUM LAMINATED SIDEWALLS WITH WELDED ALUMINUM FRAMING
- 1.5" HIGH DENSITY FOAM INSULATION IN SIDEWALLS AND ROOF
- WELDED ALUMINUM ROOF TRUSS SYSTEM AND FRAMED WALL CUTOUTS
- "SUPER SANDWICH" FLOOR CONSTRUCTION INCLUDES:
 - 2" WELDED STEEL FLOOR JOIST SYSTEM MOUNTED TO (6" AND 1.5") STEEL LONGITUDINAL FLOOR BEAMS
 - 3/4" FIR PLYWOOD DECK OVER 2 X 4 WOOD-FRAMED RESIDENTIAL FLOOR WITH THERMAL AND SOUND DEADENING INSULATION

INTERIOR

- (3) INTERIOR DECOR OPTIONS
- DÉCOR COORDINATING FABRIC VALANCES
- DOUBLE ROLLER DAY/NIGHT SHADES (MANUAL)
- DECORATIVE WALLBOARD WITH COORDINATING ACCENT IN SLIDEOUTS
- 12"X24" PORCELAIN TILE FLOORING THROUGHOUT
- MAPLE HARDWOOD CABINETRY
- 3-WOOD STAIN COLOR OPTIONS, 2-FINISH OPTIONS
- DOVETAIL DRAWERS ON SOFT CLOSING SLIDES
- FRAMED DOORS ON HIDDEN HINGES
- PANTRY
- HARDWOOD SLIDE FASCIA WITH LIGHTING
- SATIN NICKEL DOOR HARDWARE
- SATIN NICKEL KITCHEN FAUCET
- SOLID SURFACE COUNTERTOPS THROUGHOUT
- RECTANGULAR STAINLESS STEEL SINGLE BOWL UNDERMOUNT KITCHEN SINK WITH COVER
- ACCENT LIGHTING AT TOEKICKS
- GROUTED TILE BACKSPLASH
- LED LIGHTING
- ULTRA SOFT TOUCH VINYL FURNITURE UPHOLSTERY
- CONVERTIBLE BOOTH DINETTE WITH STORAGE
- MINI BOOTH DINETTE WITH STORAGE
- SOFA SLEEPER, HIDE-A-BED
- AEROCAP WITH STORAGE CABINET

APPLIANCES

- 18 CU. FT. FRENCH DOOR RESIDENTIAL STAINLESS STEEL REFRIGERATOR WITH ICEMAKER
- RECESSED 2-BURNER ELECTRIC INDUCTION COOKTOP WITH POLISHED SOLID SURFACE COVERS
- 1.7 CU. FT. STAINLESS STEEL CONVECTION MICROWAVE OVEN
- AQUA-HOT® 450D HYDRONIC WATER AND ZONE HEATING SYSTEM WITH ENGINE PRE-HEAT
- (2) 15,000 BTU ROOF A/C WITH HEAT PUMPS AND PLUMBED CONDENSATION LINES
- DUCTED AIR CONDITIONING
- MAXXAIR® POWER VENTS
- PRE-WIRED AND PLUMBED FOR OPTIONAL WASHER/DRYER
- CARBON MONOXIDE, LP AND SMOKE DETECTORS, AND FIRE EXTINGUISHER

ENTERTAINMENT SYSTEM

- 50" 4K SMART LED TV IN LIVING AREA
- SOUNDBAR HOME THEATER WITH BLUETOOTH STREAMING AND WIRELESS SUBWOOFER IN LIVING AREA
- 32" 4K SMART LED TV IN THE BEDROOM
- EXTERIOR ENTERTAINMENT CENTER
 - 43" SMART LED TV ON SWIVEL
 - SOUNDBAR WITH BLUETOOTH STREAMING
 - USB CHARGING
- WINEGARD® CONNECT 2.0 ROOFTOP OTA ANTENNA WITH WIFI AND 4G READY (SIM CARD REQ.)
- WINEGARD® IN-MOTION SATELLITE SYSTEM
- PREWIRE FOR WINEGARD® TRAV'LER STATIONARY HD SATELLITE SYSTEM

BATH

- MAPLE HARDWOOD VANITY, MEDICINE AND LINEN STORAGE CABINETS
- LED VANITY LIGHT
- DELUXE SATIN NICKEL BATH FAUCET AND ADJUSTABLE SHOWER HEAD
- SATIN NICKEL TOWEL BAR, TOWEL RING, AND TP HOLDER
- PORCELAIN MACERATOR TOILET WITH PUSH BUTTON FLUSH
- SOLID SURFACE COUNTERTOP WITH INTEGRATED SINK
- SOLID SURFACE SHOWER WITH WALL TILE INLAY AND SLIDING GLASS DOOR
- SKYLIGHT OVER SHOWER

ELECTRICAL SYSTEMS

- 8KW ONAN® QUIET DIESEL GENERATOR
- AUTOMATIC GENERATOR START SYSTEM
- 50-AMP ELECTRICAL PANEL
- 3,000W TRUE SINE WAVE INVERTER
- TRANSFER SWITCH WITH SURGE PROTECTION
- (2) 330AH AGM HOUSE BATTERY
- SOLAR CHARGING SYSTEM PRE-WIRE
- MULTIPLEX CONTROL SYSTEM WITH BLUETOOTH APP CONTROL
- USB/USB-C CHARGING IN LIVING AREA, BEDROOM, KITCHEN AND BUNK AREAS
- 50-AMP POWER RETRACTABLE SHORE CORD REEL
- 12V HOLDING TANK HEATERS, GREY AND BLACK TANKS

PLUMBING

- 150 GALLON FRESH WATER TANK
- 75 GALLON GREY TANK
- 75 GALLON BLACK TANK
- SEE-LEVEL® TANK MONITORING SYSTEM
- FULL MAINTENANCE WET BAY
 - BLACK TANK FLUSH SYSTEM
 - CITY WATER HOOKUP WITH POWERED RETRACTABLE HOSE REEL
 - OUTSIDE FAUCET WITH SPRAYER
- ON DEMAND WATER PUMP
- WHOLE HOUSE WATER FILTRATION SYSTEM

POPULAR OPTIONS

- RECLINING THEATRE SEAT ILO STANDARD SOFA
- HIGH GLOSS CABINET FINISH
- FLOOR HEAT THROUGHOUT
- WINEGARD® HD SATELLITE TRAVELR PRO
- 600W SOLAR PANEL SYSTEM (3 @ 200W)
- (2) 270AH HIGH CAPACITY LITHIUM BATTERIES ILO AGM BATTERIES
- ADDITIONAL 270AH HIGH CAPACITY LITHIUM BATTERY (LIMIT 2)
- FREIGHTLINER® BLACKOUT PACKAGE
- WASHER AND DRYER STACK
- CENTRAL VACUUM SYSTEM
- PREMIUM EXTERIOR REFER/FREEZER ON SLIDE TRAY
- HOLDING TANK SEWAGE MACERATOR SYSTEM

RENEGADE WARRANTY

RENEGADE MY2024 MOTORHOMES ARE COVERED BY A 1-YEAR UNLIMITED MILES LIMITED WARRANTY, PLUS A 3-YEAR 36,000-MILE LIMITED STRUCTURAL WARRANTY.

ALL RENEGADE MOTORHOME CHASSIS, ENGINES, TRANSMISSIONS, AND DRIVETRAIN WARRANTIES ARE PROVIDED AND ADMINISTERED BY THEIR RESPECTIVE MANUFACTURERS.

FOR SPECIFIC INFORMATION ABOUT THESE WARRANTIES, ASK YOUR DEALER OR CONTACT RENEGADE RV.



Renegade
RV

52216 SR15 BRISTOL, IN 46507
574.848.1126 | RENEGADERV.COM