

VERACRUZ

2024



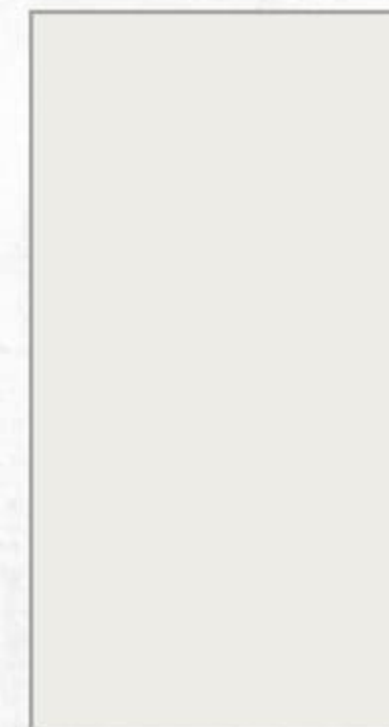
Renegade
R

VERACRUZ

THE VERACRUZ IS RESHAPING THE RV LIFESTYLE. THIS COMPACT SIZED RV PACKS A PUNCH WITH A MODERN INTERIOR AND BEAUTIFULLY DESIGNED KITCHEN. FEATURING WHITE AND LIGHT GRAY CABINETS, AN ABUNDANCE OF STORAGE AND BEAUTIFUL SOLID SURFACE COUNTERTOPS, THIS SPACIOUS KITCHEN AND DINING AREA ALLOWS YOU TO SHOWCASE YOUR CULINARY SKILLS AND ENTERTAIN YOUR FRIENDS AND FAMILY. DELUXE FABRICS AND REFINED FINISHES MAKE THE VERACRUZ LUXURY ON WHEELS.



CABINETS



**PURE WHITE
(UPPERS)**



**ACIER
(LOWERS)**



Featured here is the Veracruz 30VRM
in our Hampton decor.



INTERIOR DECORS



NEWPORT



ASHEVILLE



HAMPTON

AT A GLANCE



EXTERIOR HEIGHT	12'1"
EXTERIOR WIDTH	99 1/4"
EXTERIOR LENGTH	30'5"
INTERIOR HEIGHT	82"
INTERIOR WIDTH	95 1/2"

FUEL CAPACITY	66.5 GALLONS
DEF CAPACITY	7.4 GALLONS
FRESH WATER CAPACITY	75 GALLONS
GREY WATER CAPACITY	44 GALLONS
BLACK WATER CAPACITY	44 GALLONS

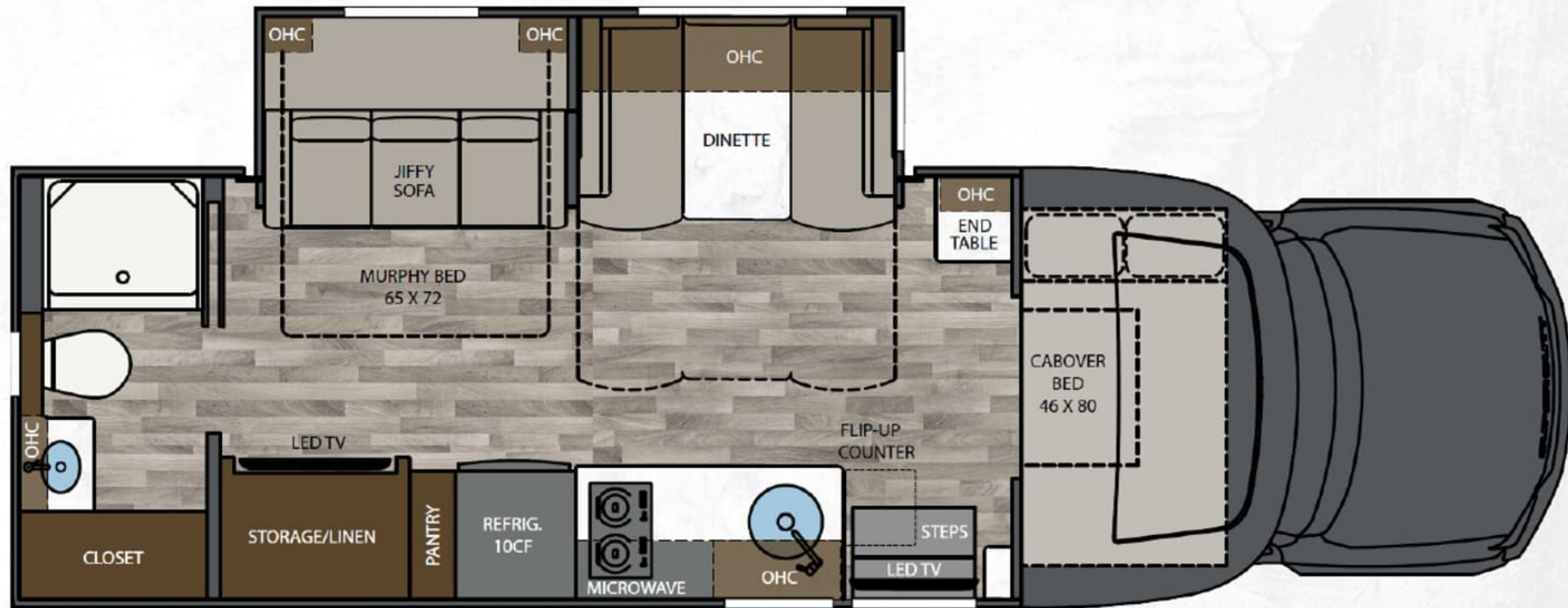
KEY FEATURES

- POWER STROKE® DIESEL 6.7 LITER ENGINE WITH 330HP/825 LB. FT. TORQUE
- TORQSHIFT® 10-SPEED AUTOMATIC TRANSMISSION
- MULTIPLEX LIGHTING SYSTEM WITH COLOR TOUCH SCREEN CONTROLLER
- 4X4 XLT TRIM PACKAGE
- DRIVER ASSISTANCE TECHNOLOGY PACKAGE
- NAVIGATION SYSTEM
- 12V, 10 CU. FT. COMPRESSOR REFRIGERATOR
- 7 PAINT COLOR OPTIONS
- FOUR-POINT AUTOMATIC HYDRAULIC LEVELING SYSTEM
- ELECTRIC LATERAL ARM AWNING WITH INTEGRATED LED LIGHTS



VERACRUZ

FLOORPLANS



30VRM | 30' FRONT ENTRY, REAR MURPHY BED

PAINT OPTIONS



POLARIS



TUNDRA



SANDSTORM



ABYSS



RED ROCK CANYON



OVERCAST



OBSIDIAN

CAB/CHASSIS

- FORD® F550 4X4 XLT CHASSIS
- 6.7L POWER STROKE™ V8 TURBO DIESEL B20 330HP ENGINE WITH 825 LB. FT. TORQUE
- 19,500 LBS GVWR
- 10-SPEED AUTOMATIC TRANSMISSION
- 12,000 LB. TOWING CAPACITY
- DUAL ALTERNATORS, 350-AMP TOTAL
- DUAL FUEL TANKS (66.5-GALLON TOTAL CAPACITY)
- 8" LCD TOUCHSCREEN INFOTAINMENT WITH AM-FM RADIO, MP3 PLAYER, WIRELESS PHONE CONNECTION, APPLE® CARPLAY™ AND ANDROID® AUTO™ COMPATIBLE
- TILT AND TELESCOPIC STEERING WHEEL WITH AUDIO AND CRUISE CONTROLS
- FRONT AND SIDE AIRBAG SUPPLEMENTAL RESTRAINT SYSTEM FOR DRIVER AND PASSENGER
- ENGINE EXHAUST BRAKE
- TRAILER BRAKE CONTROLLER
- TRAILER SWAY CONTROL
- HILL START ASSIST
- KEYLESS POWER CAB LOCKING SYSTEM WITH KEY FOB AND DOOR KEYPAD
- REMOTE START
- POWER ADJUSTABLE DRIVER'S PEDALS
- POWER WINDOWS WITH ONE-TOUCH SWITCHES
- POWER/HEATED SIDE MIRRORS
- OUTSIDE TEMPERATURE DISPLAY
- DRIVER AND PASSENGER PLATFORM RUNNING BOARDS

EXTERIOR

- AERODYNAMIC FIBERGLASS FRONT WITH FULL TRANSITIONS, REAR BROW AND BUMPER
- FOUR-POINT HYDRAULIC LEVELING SYSTEM WITH APP
- EXTERIOR ENTRY DOOR ASSIST HANDLE
- POWERED FOLDING DOUBLE ENTRY STEPS
- (7) COLORWAY PAINT OPTIONS
- GIRARD® GG LATERAL ARM ELECTRIC AWNING WITH LED LIGHTS
- SLIDE TOPPERS
- FRAMELESS DUAL-PANE TINTED WINDOWS WITH SCREENS
- SIDE-SWING INSULATED ALUMINUM COMPARTMENT DOORS WITH SINGLE HANDLE PADDLE LATCHES AND DOUBLE CATCH
- COMPOSITE STORAGE COMPARTMENTS

CONSTRUCTION

- 2" VACUUM BOND LAMINATED SIDEWALLS WITH WELDED ALUMINUM FRAMING
- LIGHTWEIGHT VACUUM BOND LAMINATED FLOOR WITH ALUMINUM FRAMING AND HIGH STRENGTH COMPOSITE INTERIOR/EXTERIOR PANELS
- WELDED ALUMINUM ROOF TRUSS SYSTEM WITH FRAMED CUTOUTS
- ONE-PIECE CROWNED FIBERGLASS ROOF SURFACE

INTERIOR

- (3) INTERIOR DECOR OPTIONS
- DÉCOR COORDINATING FABRIC VALANCES
- SINGLE ROLLER NIGHT SHADES (MANUAL)
- DECORATIVE WALLBOARD WITH COORDINATING ACCENT IN SLIDEOUTS
- PREMIUM VINYL FLOORING THROUGHOUT
- MAPLE HARDWOOD CABINETRY
- PAINTED HARDWOOD THROUGHOUT
- DRAWERS ON SOFT CLOSING SLIDES
- FRAMED DOORS ON HIDDEN HINGES
- PANTRY
- HARDWOOD SLIDE FASCIA
- SATIN NICKEL DOOR HARDWARE
- SATIN NICKEL KITCHEN FAUCET
- SOLID SURFACE COUNTERTOPS THROUGHOUT
- ROUND STAINLESS STEEL SINGLE BOWL UNDERMOUNT KITCHEN SINK WITH COVER
- SOLID SURFACE BACKSPLASH
- FLIP-UP COUNTERTOP EXTENSION
- LED LIGHTING
- MEMORY FOAM MATTRESS
- ULTRA SOFT TOUCH VINYL FURNITURE UPHOLSTERY
- CONVERTIBLE BOOTH DINETTE WITH STORAGE
- JIFFY SOFA SLEEPER WITH STORAGE
- CABOVER BUNK WITH WINDOW AND POWER SHADE

APPLIANCES

- 10 CU. FT., 12V STAINLESS STEEL COMPRESSOR REFRIGERATOR
- FLUSHMOUNT, 2-BURNER ELECTRIC INDUCTION COOKTOP
- 1.7 CU. FT. STAINLESS STEEL CONVECTION MICROWAVE OVEN
- TRUMA® AQUAGO COMFORT PLUS TANKLESS WATER HEATER
- 15,000 BTU ROOF A/C WITH HEAT PUMP
- DUCTED AIR CONDITIONING
- 35,000 BTU LP DUCTED GAS FURNACE
- MAXXAIR® POWER VENTS
- CARBON MONOXIDE, LP AND SMOKE DETECTORS, AND FIRE EXTINGUISHER

ENTERTAINMENT SYSTEM

- 39" SMART LED TV (PRIMARY)
- SOUNDBAR HOME THEATER WITH BLUETOOTH STREAMING AND WIRELESS SUBWOOFER IN LIVING AREA
- 32" SMART LED TV (SECONDARY; ABOVE ENTRY)
- EXTERIOR ENTERTAINMENT CENTER
 - 28" SMART LED TV
 - SOUNDBAR WITH BLUETOOTH STREAMING
 - USB CHARGING
- WINEGARD® CONNECT 2.0 ROOFTOP OTA ANTENNA WITH WIFI AND 4G READY (SIM CARD REQ.)
- PRE-WIRED FOR IN-MOTION AND HD ROOFTOP SATELLITE SYSTEMS

BATH

- MAPLE HARDWOOD VANITY AND MEDICINE STORAGE CABINETS
- LED VANITY LIGHT
- DELUXE SATIN NICKEL BATH FAUCET AND ADJUSTABLE SHOWER HEAD
- SATIN NICKEL TOWEL BAR, TOWEL RING, AND TP HOLDER
- PORCELAIN MACERATOR TOILET WITH PUSH BUTTON FLUSH
- SOLID SURFACE COUNTERTOP WITH INTEGRATED SINK
- FIBERGLASS SHOWER WITH GLASS DOOR
- SKYLIGHT OVER SHOWER

ELECTRICAL SYSTEMS

- 8KW ONAN QUIET DIESEL GENERATOR
- AUTOMATIC GENERATOR START SYSTEM
- 50-AMP ELECTRICAL PANEL
- 3,000W TRUE SINE WAVE INVERTER
- TRANSFER SWITCH WITH SURGE PROTECTION
- 330AH AGM HOUSE BATTERY
- SOLAR CHARGING SYSTEM PRE-WIRE
- MULTIPLEX CONTROL SYSTEM WITH BLUETOOTH APP CONTROL
- USB/USB-C CHARGING IN LIVING AREA, BEDROOM, KITCHEN AND BUNK AREAS
- 50-AMP POWER RETRACTABLE SHORE CORD REEL
- 12V HOLDING TANK HEATERS, GREY AND BLACK TANKS

PLUMBING

- 75 GALLON FRESH WATER TANK
- 44 GALLON GRAY TANK
- 44 GALLON BLACK TANK
- 20 GALLON LP TANK
- SEE-LEVEL® TANK MONITORING SYSTEM
- FULL MAINTENANCE WET BAY
 - BLACK TANK FLUSH SYSTEM
 - FRESH WATER FILL -CITY WATER HOOKUP
 - OUTSIDE FAUCET WITH SPRAYER
- ON DEMAND WATER PUMP
- WHOLE HOUSE WATER FILTRATION SYSTEM

POPULAR OPTIONS

- THEATER SEATING WITH TABLE ILO DINETTE
- ALL WEATHER CAB MATS
- WINEGARD® IN-MOTION SATELLITE DISH
- (3) 100AH LITHIUM BATTERIES ILO AGM BATTERIES
- 600W SOLAR PANEL SYSTEM (3 @ 200W)
- LP QUICK DISCONNECT

RENEGADE WARRANTY

RENEGADE MY2024 MOTORHOMES ARE COVERED BY A 1-YEAR UNLIMITED MILES LIMITED WARRANTY, PLUS A 3-YEAR 36,000-MILE LIMITED STRUCTURAL WARRANTY.

ALL RENEGADE MOTORHOME CHASSIS, ENGINES, TRANSMISSIONS, AND DRIVETRAIN WARRANTIES ARE PROVIDED AND ADMINISTERED BY THEIR RESPECTIVE MANUFACTURERS.

FOR SPECIFIC INFORMATION ABOUT THESE WARRANTIES, ASK YOUR DEALER OR CONTACT RENEGADE RV.



Renegade
RV

52216 SR15 BRISTOL, IN 46507
574.848.1126 | RENEGADERV.COM