

# PINNACLE



## OPTIONS

A



20 Cu. Ft. Fridge

B



Queen Bed

C



Butler Pantry

D



Front Wardrobe

32RLTS OPTIONS: A, B



36FBTS OPTIONS: A, B



37MDQS OPTIONS: A, B



38FBRK OPTIONS: A, B



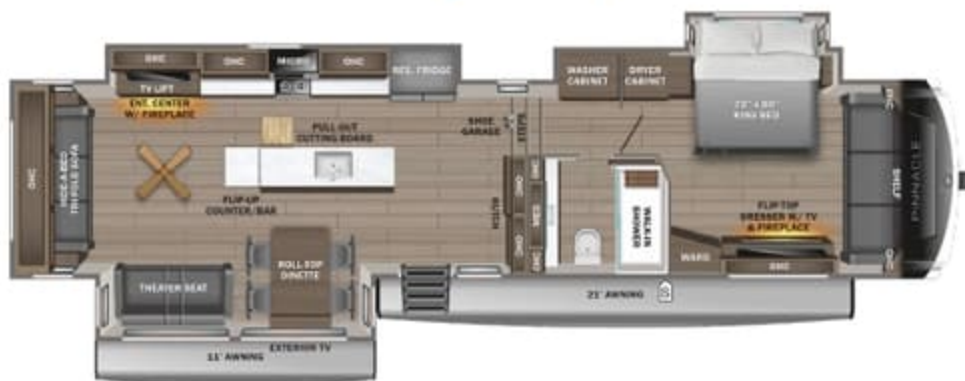
38FLGS OPTIONS: A, B, C



38KPTS OPTIONS: A, B



38SSWS OPTIONS: A, B, D



	STORAGE
	MICROWAVE
	OVERHEAD CABINETS
	REFRIGERATOR
	WARDROBE

## PAINT OPTIONS



Midnight Charcoal Full-Body Paint



Midnight Gold Full-Body Paint



Silver Metallic Full-Body Paint

# STANDARDS & OPTIONS

## EXTERIOR

(3) 40 lb. LP propane bottles with auto regulator (120 lb. max LP system)  
 102 in. widebody construction  
 12 in. structural steel I-beam with 10 in. steel drop frame  
 120V heat blankets on all tanks plus 12V heat tape on fresh water line  
 3,000 lb. tow hitch with 4-way pin  
 Battery disconnect  
 Built in sewer hose carrier  
 Climate Shield™ zero-degree tested weather protection:  
 40,000 BTU output furnace  
 Double layer fiberglass batt insulation (roof and floor)  
 Fully enclosed and heated underbelly (ducted)  
 PEX plumbing, 2 in. block foam and reflective foil  
 Custom automotive-grade vinyl exterior graphics package  
 Exterior marine-grade speakers with Bluetooth® controller  
 Frameless dark tinted safety-glass windows  
 Fully enclosed, universal docking center:  
 Black tank flush  
 Independent satellite wiring  
 Quick-connect outside shower  
 Selectable water connections  
 Whole coach cable hookups  
 Winterization and sanitation hookups  
 Inverter pre-wire to select outlets  
 JayPort outside griddle prep (standard on all floorplans without a standard outside kitchen)  
 JaySMART™ (Safety Markers And Reverse Travel) LED lighting (patented)  
 LED exterior lighting package  
 Magnum Truss™ XL6™ Roof System (strongest tested roof in the industry) with Alpha roof membrane system with limited lifetime warranty  
 Painted fiberglass front and rear cap with clear coat and built-in specialty LED lighting  
 Pass-through storage with Slam-latch™ baggage doors  
 Skirt metal enclosed drop frame  
 Stronghold VBL™ aluminum framed and vacuum bond laminated gel coated fiberglass exterior walls (including slide room end walls)  
 Under-mounted spare tire  
 Water heater bypass

## INTERIOR

12V charging station  
 5/8 in. tongue-and-groove joined plywood floor and 3/8 in. plywood roof decking  
 Bathroom skylight  
 Built-in laundry hamper in wardrobe (select models)  
 Carbon monoxide and LP detector  
 Cedar-lined front wardrobe closet  
 Ceiling fan (select models)  
 CPAP prepped bedroom  
 Extra 120V power outlets in kitchen and slide rooms  
 Flip-up countertop extension/bar top (select models)  
 Flip-up hidden storage in bedroom chest of drawers (select models)  
 Flip-up tabletop storage next to tri-fold sofa (select models)  
 Gas-strutted under-bed storage  
 Handcrafted hardwood glazed doors, stiles, drawers and trim  
 Hidden hinges, magnet latches and soft close cabinet doors and drawers

Integrated under-mount sink and lever faucet in main bathroom  
 LED accent lighting above slideouts  
 LED backlit custom framed mirror and medicine cabinet (most models)  
 LED interior lighting throughout  
 No in floor heat ducts throughout coach  
 Pantry with adjustable shelves and pull out drawers includes 120V outlet (most models)  
 Porcelain toilet with foot flush  
 Removable tray tables at theater seats  
 Residential "Do it all" sink with pull-out kitchen faucet, glass rinse, and vegetable rinse  
 Residential dove tail jointed drawers throughout  
 Residential NuVo H2O whole coach water treatment system with water softening and triple cartridge filters  
 Residential quilted bedspread and pillows  
 "Shoe garage" in hallway step (select models)  
 Soft close, heavy-duty, 75 lb. full extension, steel ball-bearing drawer guides  
 Solid hardwood slide fascia  
 Stain protected fabric on all furniture  
 Toe kick nightlights in bedroom, bathroom and kitchen  
 Tri-fold hide-a-bed sofa with sleep surface (select models)  
 Vinyl flooring (made in the USA) throughout including slide rooms

## CUSTOMER VALUE PACKAGE (MANDATORY)

15,000 BTU "Whisper Quiet" A/C (bedroom)  
 15,000 BTU "Whisper Quiet" A/C with heat pump (main)  
 16 gal. gas/electric DSI water heater  
 50 in. 4K SMART LED HDTV with fully digital HDMI® output and two additional HDMI® cables  
 Backup, main entrance door and side observation security camera prep (includes a power switch in the bedroom to use the optional 7 in. monitor for security)  
 Custom machined aluminum rims  
 Electric patio awning with integrated RGB LED lights (multi-colored with remote control)  
 Hidden hinges, magnet latches, and soft close cabinet doors  
 JBL® home entertainment system with sound bar and wireless subwoofer  
 Keyed-Alike™ lock system (single key for all doors/locks)  
 MORryde Safe-T-Rail grab handle  
 Residential king (72 in. x 80 in.) mattress with under-bed storage  
 Rooftop and ground solar prep  
 Wireless remote control system (includes Bluetooth® wireless interior controls) with dimmer switches

## LUXURY PACKAGE (MANDATORY)

2nd electric patio awning with integrated RGB LED lights (multi-colored with remote control)  
 32 in. 4K outside Smart LED TV  
 32 in. 4K Smart LED bedroom TV  
 6-point hydraulic auto-leveling system  
 Cellular prep for 5G Wi-Fi and JAYCOMMAND®  
 Central vacuum system with dust port  
 Day/night roller shades in living room  
 Frameless dark tinted safety-glass windows

Free-standing roll top (no pedestal) table with (2) free-standing and (2) folding chairs  
 GE 21 cu. ft. residential refrigerator with 1800W inverter  
 GE Profile Series 30 in. residential convection microwave with built in air fryer  
 GE Profile Series residential 24 in. range (3.7 cu. ft. with 9100 BTU high output burner)  
 High gloss gel coated sidewalls  
 JAYCOMMAND® Smart RV System  
 LED fireplace with electric space heater  
 MORryde® StepAbove™ entrance steps (main entrance) with strut assist  
 Oversized multi-battery compartment (industry leading room for 4-6 batteries)  
 Powered 50-amp cord reel  
 Residential solid-surface kitchen countertop  
 Residential walk-in shower with shampoo/soap holder, teak seat and shower tower  
 Solid hardwood cabinet doors, stiles, and fascia  
 Under-sink dishwasher  
 Washer/dryer prep

## OPTIONS

20 cu. ft. 12V refrigerator  
 3rd 15,000 BTU ducted A/C  
 5,500W Onan® Microquiet generator  
 7K hydraulic disc brake package (ABS N/A with disc brakes)  
 8K hydraulic disc brake package (ABS N/A with disc brakes)  
 Butler's pantry (in place of half bath 38FLGS)  
 Frameless dual-pane tinted safety-glass windows  
 Front wardrobe in place of front windshield and sofa lounge (36SSWS)  
 Full body paint- Midnight Gold, Silver Metallic, Midnight Charcoal  
 Generator prep  
 MORryde independent suspension and shocks with 8K axles and disc brakes (ABS not available)  
 Outside Halo griddle for JayPort system or outside kitchens includes LP quick connect (select models)  
 Overlander 2 Solar Package: 30-amp controller, (1) 1800W inverter and (2) 200W solar panels  
 Overlander 4 Solar Package: (4) 200W solar panels, (2) 100-amp/hour lithium heated batteries, 60-amp controller, 3000W inverter, DC/DC power converter, soft start power save main 15K A/C, soft start power save for bedroom 15K A/C, battery monitor, energy management system, roof pre-wire for additional solar panels, generator prep capable and heavy gauge steel battery enclosure  
 Overlander EXT Solar Package: 3,000W inverter/charger with internal 50-amp transfer switch, energy management system, (6) solar panels with 200W each, (6) 100-amp/hour lithium heated batteries, 12V DC A/C in bedroom, DC to DC battery charger, 100-amp MPPT controller management, generator prep capable  
 Queen residential foam-top mattress  
 Slideout awning(s) (quantity varies by model)  
 True interior design choice (Modern Farmhouse or Vintage Farmhouse)  
 Truma on-demand hot water system  
 Wireless backup/side view/front entry door observation kit with 7 in. monitor

The 5-Star Handling Package (MANDATORY) is a Jayco exclusive, a powerful blend of high-end American-made components that make pulling a luxury fifth wheel a breeze.



**DEXTER® AXLES WITH ABS & TOW ASSIST - INCLUDES NEV-R-ADJUST® BRAKES & E-Z LUBE® HUBS**

The Benchmark of the trailer industry!



**MORryde® PIN BOX**

Allows pin box to travel forward and backward as well as side-to-side, creating a smoother tow.



**DEXTER® HEAVY-DUTY 1/2" SHACKLES WITH WET BOLT FASTENERS AND BRONZE BUSHINGS**

Resists the wear-and-tear of towing.



**MORryde® RUBBERIZED SUSPENSION SYSTEM**

Better absorbs and isolates road shock.



**UNIROYAL® TIRES**

17.5 in. 16-ply 'H' Rated

\*Indicates split tanks

FLOORPLAN	TOTAL EXTERIOR LENGTH	EXTERIOR WIDTH	EXTERIOR HEIGHT (WITH A/C)	INTERIOR HEIGHT (MAIN)	INTERIOR HEIGHT (UPPER DECK)	UNLOADED VEHICLE WEIGHT	DRY HITCH WEIGHT	GVWR	CARGO CARRYING CAPACITY	FRESH WATER CAPACITY (INCLUDING WATER HEATER)	GRAY WASTE WATER CAPACITY	BLACK WASTE WATER CAPACITY	SLEEPING CAPACITY
32RLTS	36' 4"	8' 6"	13' 3"	8' 6"	6' 8"	13,530	2,485	16,600	3,070	75	50	87*	2-4
36FBTS	40' 6"	8' 6"	13' 4"	8' 6"	6' 8"	14,240	2,540	17,500	3,260	75	87*	87*	2-5
37MDQS	41' 8"	8' 6"	13' 3"	8' 6"	6' 8"	15,315	3,100	18,400	3,085	75	87*	50	4-6
38FBRK	43' 10"	8' 6"	13' 5"	8' 6"	6' 7"	15,330	2,975	18,200	2,870	75	87*	50	4-6
38FLGS	44' 5"	8' 6"	13' 5"	8' 6"	6' 6"	15,455	2,900	18,500	3,045	75	87*	87*	4-6
38KPTS	41' 0"	8' 6"	13' 4"	8' 6"	6' 6"	14,535	2,870	17,700	3,165	75	87*	50	2-4
38SSWS	43' 1"	8' 6"	13' 4"	8' 6"	6' 6"	15,290	3,370	18,700	3,410	75	87*	50	2-4

Meet your Jayco Dealer



Scan QR code for specification definitions



Some specs at the time of print may include estimates. For the most updated information, please visit [Jayco.com](http://Jayco.com)

Jayco, Inc. | P.O. Box 460 | Middlebury, IN 46540

See dealer for further information and prices. All information in this brochure and on [www.jayco.com](http://www.jayco.com) is the latest available at the time of publication approval. Jayco reserves the right to make changes and to discontinue models without notice or obligation. Photography may show optional equipment or props used for decoration purposes only. RVs built for sale in Canada may differ to conform to Canadian codes. JAYCO and the JAYCO BIRD IN FLIGHT are registered trademarks of Jayco, Inc. Printed in USA 11/24 ©2024 Jayco, Inc. 2032077

Jayco - Part of Jayco Family of Companies