

NEWMAR



SUPREME AIRE

2025 SUPER CLASS C MOTORCOACH

Supreme Quality, Through and Through

The 2025 Supreme Aire offers a one-of-a-kind Super C experience. With a full air-ride cab, owners will enjoy smooth rides on even the most rugged adventures. Engineered for excellence and crafted for comfort, the Supreme Aire offers an RVing experience unlike anything else.





Freightliner® M2 112 Chassis

Detroit Diesel DD13 Engine | 525 HP | 1,850 lb./ft. torque | Sterling Full-Paint Masterpiece Finish™ Exterior



40' - 45' / 4 floor plans



COCKPIT

Air-Ride Captain's Chairs

Lumbar Support with 12V Electric Controls

Skylight

Power Shade

Xite Dash Radio

12.3" Monitor*

Nav-N-Go Navigation System

Apple CarPlay®

HD 360 Camera System

Harman/JBL 180w Sound System and Subwoofer

Detroit Assurance 5.0 Lane Departure Warning System

Detroit Assurance Safety System

Object Detection

Active Brake Assist

Pedestrian Detection

Auto On/Off Headlights

Auto RainSense Wipers

Intelligent High Beams

Adaptive Cruise Control with Adjustable Headway

Tire Pressure Monitoring System



*New for 2025





Floor plan 4530 with Camden décor and Summit upper and Sable lower cabinets

CABIN

New Feature Ceiling*

New Slideout Fascia Design*

Newly Designed Leather Furniture*

**Four Décor Options*: Camden, Halstead,
Sorrento, and Winston**

**87" Powered Theater Seating
and Trifold Sofa** (Optional)**

50" Samsung® 4K LED TV
Bose® 900 Sound Touch Soundbar

Power Stepwell Cover

Redesigned Porcelain Tile Flooring*

15K BTU Penguin™ Heat Pump Air Conditioners¹



**New for 2025*

***See Features and Options for all available furniture configurations*

¹Two units on 40' models, three units on 45' models

CABIN

Maple Cabinet Doors in High Gloss or Suede* Finish

Available in Four Solid Colors and Three Two-Tone Options*

Soft-Close Cabinet Drawers

Undermounted LED Lights

Electric Radiant Heat Beneath Main Floor Tile

WiFiRanger Everest System with Aspen Router (Optional)

Starlink Internet System* (Optional)



Floor plan 4530 with Camden décor and Summit upper and Sable lower cabinets

**New for 2025*



CABINET FINISHES





GALLEY & DINETTE

All-Electric Flush Mount Induction Cooktop

Convection Microwave

Air Fryer Feature

19.7 Cu. Ft. Whirlpool® Refrigerator

Dishwasher in a Drawer (Optional)

Dual-Zone Beverage Center*¹ (Optional)

Pantry

Pull-Out Shelves

Push-to-Release Drawer Slides

Super-Polished Solid-Surface Countertops*

Kitchen Window (Optional)

Tile Backsplash*

Euro Booth Dinette**

Two Table Leaves

Two Folding Chairs



**New for 2025*

¹Available on Floor Plan 4304 only

***Additional dinette configurations available; see Features & Options for details*







BEDROOM

King-Size Bed* with Pillow Top Mattress

Adjustable Support Air Bed (Optional)

Samsung® 4K LED TV

Bedroom Speakers

Lighted Wardrobe

Dimmable Reading Lights



**Bed sizes vary by floor plan, see Floor Plans for more details*

BATHROOM

Tiled Shower Walls with Glass Door*

Aqua Miser® Shower System

**Super-Polished
Solid-Surface Countertops****

Tile Backsplash**

150-Gallon Fresh Water Tank

Linen Cabinet

Safe

**Splendide® Two-Piece Stacked
Washer and Dryer**

**Shower sizes vary by floor plan
**New for 2025
Half baths available on select floor plans*







EXTERIOR & STORAGE

Industry-Exclusive Full-Paint Masterpiece Finish™ with Cut and Buff

New Exterior Design and Color Combinations*

Girard® Nova Side Awnings

Power Baggage Door Locks

Lighted Exterior Storage Compartments

Dometic® Freezer on Pull-Out Tray (Optional)

Exterior Entertainment Center (Optional)

43" Samsung® 4K LED TV

Bose® Soundbar



EXTERIOR

Rear Cap Storage

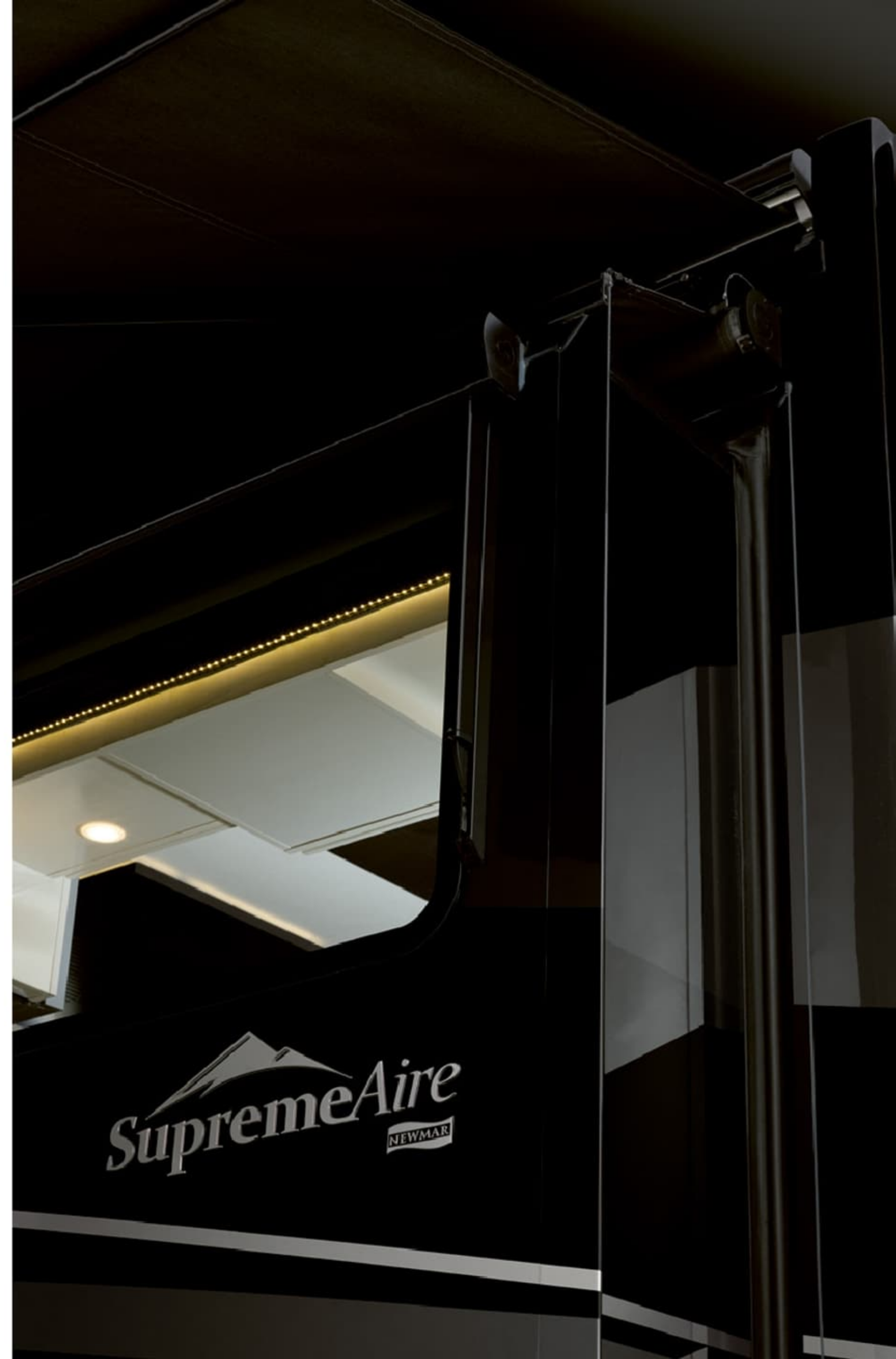
Exterior Shower

12.5 kW Cummins Onan® Diesel Generator

10w Solar Panel

(to charge chassis battery)

**Four Flexible 110w Solar Panels
on Roof (Optional)**







DESIGN OPTIONS

INTERIOR AND EXTERIOR

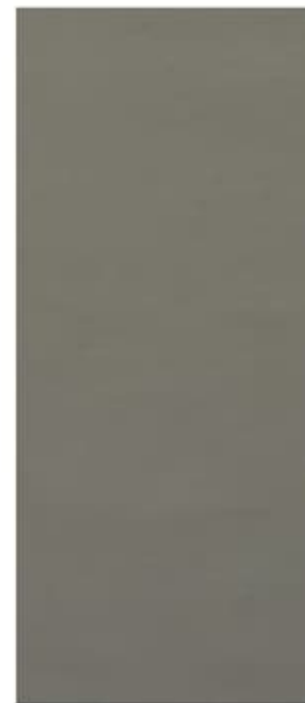
ASPEN



| Charcoal Tweed Awning



CAMDEN INTERIOR



Furniture



Fabric



Fabric



Flooring



Counter Top

ATMOSPHERIC



| Charcoal Tweed Awning



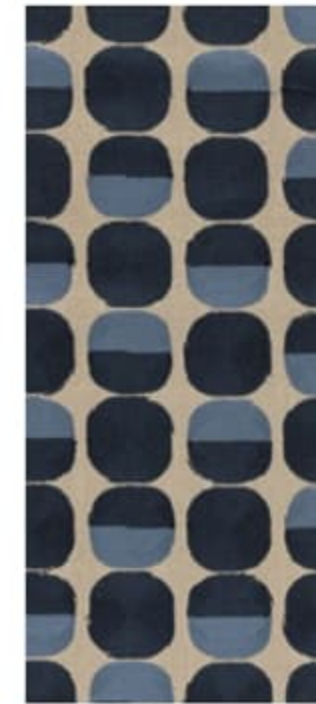
HALSTEAD INTERIOR



Furniture



Fabric



Fabric



Flooring



Counter Top

OAKWOOD



| Hogan Sparrow Awning



SORRENTO INTERIOR



Furniture



Fabric



Fabric



Flooring



Counter Top

STERLING



| Charcoal Tweed Awning



WINSTON INTERIOR



Furniture



Fabric



Fabric



Flooring



Counter Top





FLOOR PLANS

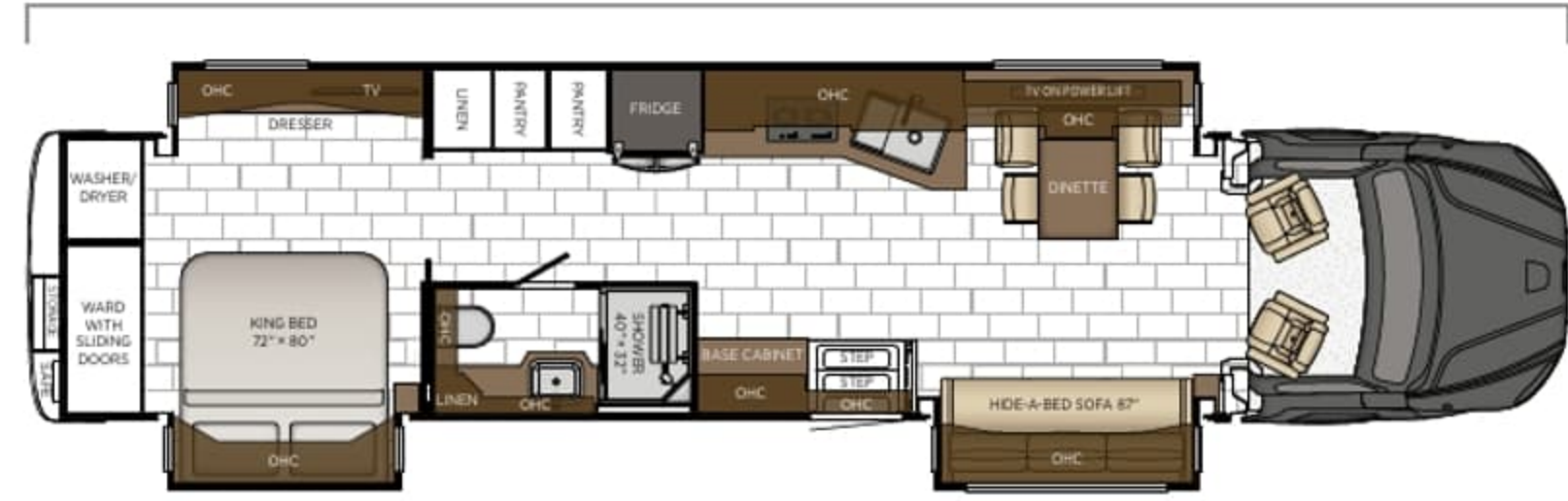
AND SPECIFICATIONS

Length: 41' 02"



| | | | | |
|-------------|---------------------|---------|-------------|------------|
| 4051 | Length | 41' 02" | Grey Tank | 60 gal. |
| | Width | 101.5" | Sewage Tank | 40 gal. |
| | App. Overall Height | 13' 02" | Water Tank | 150 gal. |
| | Interior Width | 95.5" | Furnace | 50,000 btu |
| | Interior Height | 83" | | |
| | | | | |

Length: 44' 11"



| | | | | |
|-------------|---------------------|---------|-------------|------------|
| 4504 | Length | 44' 11" | Grey Tank | 60 gal. |
| | Width | 101.5" | Sewage Tank | 40 gal. |
| | App. Overall Height | 13' 02" | Water Tank | 150 gal. |
| | Interior Width | 95.5" | Furnace | 50,000 btu |
| | Interior Height | 83" | | |
| | | | | |

Length: 44' 11"



| | | | | |
|-------------|---------------------|---------|-------------|------------|
| 4509 | Length | 44' 11" | Grey Tank | 60 gal. |
| | Width | 101.5" | Sewage Tank | 40 gal. |
| | App. Overall Height | 13' 02" | Water Tank | 150 gal. |
| | Interior Width | 95.5" | Furnace | 50,000 btu |
| | Interior Height | 83" | | |
| | | | | |

Length: 44' 11"



| | | | | |
|-------------|---------------------|---------|-------------|------------|
| 4530 | Length | 44' 11" | Grey Tank | 60 gal. |
| | Width | 101.5" | Sewage Tank | 40 gal. |
| | App. Overall Height | 13' 02" | Water Tank | 150 gal. |
| | Interior Width | 95.5" | Furnace | 50,000 btu |
| | Interior Height | 83" | | |
| | | | | |



Quality You Can Feel

Like a fine home, the 2025 Supreme Aire is framed 16 inches on center, and is covered by a fiberglass roof with an integrated gutter rail.

| SPARTAN* | | | | | | | | | | | |
|------------|-----------|------------|-----------|------------|------------|-----------|-----------|-----------|-----------|-----------|-----------|
| FLOOR PLAN | ENGINE HP | AXLE RATIO | FUEL CAP. | WHEEL BASE | FRONT GAWR | REAR GAWR | TAG GAWR | GVWR | GCWR | APP. UVW | APP. NCC |
| 4051 | 525 | 3.9 | 100 | 285+TAG | 18000 lb. | 20000 lb. | 20000 lb. | 52000 lb. | 72000 lb. | 41500 lb. | 10500 lb. |
| 4504 | 525 | 3.9 | 100 | 309+TAG | 18000 lb. | 20000 lb. | 20000 lb. | 52000 lb. | 72000 lb. | 43500 lb. | 8500 lb. |
| 4509 | 525 | 3.9 | 100 | 309+TAG | 18000 lb. | 20000 lb. | 20000 lb. | 52000 lb. | 72000 lb. | 43500 lb. | 8500 lb. |
| 4530 | 525 | 3.9 | 100 | 309+TAG | 18000 lb. | 20000 lb. | 20000 lb. | 52000 lb. | 72000 lb. | 43500 lb. | 8500 lb. |

The content in our literature depicts and describes products that are subject to change. For the most recent images and information, please visit NewmarCorp.com.

Lengths, heights, widths, and dry weights are approximate. Weight will vary based on optional equipment added to the above base weight.

GAWR: Gross Axle Weight Rating is the maximum permissible weight for an axle.

GVWR: Gross Vehicle Weight Rating is the maximum permissible weight for a fully loaded motor coach.

GCWR: Gross Combination Weight Rating is the value specified by the manufacturer of the vehicle as the maximum allowable loaded weight of this motor coach and any towed trailer or towed vehicle.

UVW: Unloaded Vehicle Weight is the weight of this motor coach as built at the factory with full fuel, engine oil, and coolants. Does not include cargo, fresh water, propane gas, or dealer-installed accessories.

NCC: Net Carrying Capacity is the maximum weight of all occupants, including the driver, personal belongings, food, fresh water, waste water, propane gas, tools, tongue weight of towed vehicle, dealer-installed accessories, etc., that can be carried by the motor coach.

Specifications supplied by the chassis manufacturer.

Supreme Aire R-Values:

Roof R-Value = 19

Sidewall R-Value = 11

Floor R-Value = 16

Basement R-Value = 4



FEATURES

AND OPTIONS

EXTERIOR FEATURES

Full-Paint Masterpiece Finish™ Graphics with Cut and Buff and Beta Fusion Protection on Front Cap

Lighted Newmar Badge in Front Cap

Chrome Power Baggage Door Locks, Keyless Entry Door with Touchpad and Doorbell

Convex Exterior Mirrors with Defrost and Remote Control

Automatic Triple Entrance Doorstep-Hydraulic

Assist Handle at Entrance Door

Mud Flaps

Rear Protective Tow Guard with Stainless Steel Newmar Name Cutout

Undercoating

Hydraulic Leveling Jacks

Stainless Steel Exterior Trim Pieces and Entrance Door Kick Panel

Storage Bins in Pegboard Compartment

Power Lock Cockpit Doors

Rear Cap Storage

OPTIONS

Storage Tray 34" x 56" Non-Power Location-Bay 6

Storage Tray 34" x 56" Non-Power Location-Bay 5

Stainless Steel Trim Kit for Exterior Compartment Doors

Flagpole Bracket

CONSTRUCTION FEATURES

Fiberglass Roof and Integrated Gutter Rail

Gelcoated Fiberglass Exterior Sidewalls, Front and Rear Caps

Aluminum-Frame Sidewalls and Roof Construction, 16" on Center

5/8" Foam Insulation Laminated in Sidewalls and Ceiling

Polar Pak R19 Batten Insulation on Roof

Automatic Lock Arms on Non-Hydraulic Slideout Rooms—Paddle Style

Egress Door with Ladder System*

HWH Flat Floor Slideout

WINDOWS, AWNINGS, & VENTS

Frameless Double-Pane Tinted Safety-Glass Windows

Fan-Tastic® Vent with Rain Sensor in Kitchen, Bathroom and Enclosed Stool Room

Hardwood Louvered Cover on Fan-Tastic® Vent in Kitchen

Sky Window in Cockpit with Power Shade

Girard® Package—Two Nova Side Awnings, Slideout Covers and Power Window Awnings

Driver and Passenger Power Window

Bunk Windows*

OPTIONS

Kitchen Window

CHASSIS FEATURES

100 Gallon Fuel Capacity

30K Rear Hitch for Towing—Includes Draw Bar with 2-5/16" Ball

Aluminum Wheels

Anti-Lock Braking System

Chassis Battery Disconnect

Electronic Stability Control

Cruise Control

Standard M-2 112 Chassis Detroit DD13-525 Engine 311" Wheelbase

Standard M-2 112 Chassis Detroit DD13-525 Engine 335" Wheelbase

Tandem Rear Drive Axles

Tire Pressure Monitoring System

D.A.S.S.-Auto On/Off Headlights, Intelligent High Beams, Auto Rain Sense Wipers

D.A.S.S.-Object Detection, Active Brake Assist, Pedestrian Detection, Adaptive Cruise Control

Detroit Assurance Lane Departure Warning System

Keyless Entry Driver/Passenger Doors

AIR CONDITIONING & HEATING

Two 15K BTU Penguin™ Heat Pump Air Conditioners with Remote Control Thermostat on 40'

Three 15K BTU Penguin™ Heat Pump Air Conditioners with Remote Control Thermostat on 45'

Chinook Dual Loop Heat with Continuous Hot Water

Dash Heater and Air Conditioner

Wall Mounted Sensors for Heating and Air Conditioning

Roof Air Conditioning Drainage System

Electric Radiant Heat Installed Below Main Floor Tile

ELECTRICAL FEATURES

12.5 kW Onan® Diesel Generator

Generator Start/Stop Function on Touchscreen in Water Bay Compartment

50 Amp Electrical Service with Flexible Cord with Automatic Transfer Switch

Eight 6-Volt AGM House Batteries

Battery Disconnect Switch for House Battery

| |
|---|
| 10-Watt Solar Panel to Charge Chassis Battery |
| 3000-Watt True Sine Inverter |
| Integrated Block Heater |
| Energy Management System |
| Exterior Security Lights |
| Midship Side Turn Signals |
| LED Lights Recessed in Ceiling and Underneath Overhead Cabinets |
| Accent Lights in Feature Ceiling, Slideout Fascia Trim and Lambrequins |
| LED Lighting in Pull-Out Pantry, Kitchen and Bathroom Base Cabinets |
| LED Lights in Exterior Storage Compartments on Automatic Switches |
| LED Lights Installed Under Door Side Slideouts |
| Lights in Wardrobes |
| Manually Operated Hold-to-Run Slideout Switch |
| Automatic Generator Start on Low Battery or Temperature Setting |
| Cable TV Connection |
| Interior Courtesy Lights |
| USB Outlet at Dinette and Bedroom Nightstand |
| USB Outlet at Dash for Driver Use |
| Power Rewind Wheel with 50' Cord |
| Recessed Docking Lights |
| KIB Touchscreen Interior Light and Shade Controls |
| Secondary Multiple Touchscreen in Bedroom |
| Silverleaf® Multiplex Electrical Wiring System |
| Solar Prep with Six Gauge Wire from the Roof House Battery Compartment* |
| Spare Fuses in Chassis and House Fuse Panels |
| 110 Volt Recept in Bed Overhead with Two Pass-Through Ports |
| 110 Volt/USB Outlet at Head of Each Bunk* |
| Transfer Switch with Surge Protector |
| Reading Lights at Head of Bed-Dimmable with Adjustable Aim |
| Multiplex Lighting Control System with LCD Display Touchscreen |
| System Control App to Control Numerous Features from Personal Device |

OPTIONS

| |
|---|
| LED Strip Lighting Installed Under Off Door Side Slideouts |
| Four Flexible 110-Watt Solar Panels on Roof |
| Cord Connection 50 Amp/120/240 Volt for Stacker Trailer |
| Lithium Ion 640 AHR Battery System with Two 3000-Watt Pure Sine Inverters |
| Lithium Ion 960 AHR Battery System with Two 3000-Watt Pure Sine Inverters |

PLUMBING & BATH FEATURES

| |
|---------------------------|
| Demand Water System |
| Sewage Holding-Tank Rinse |

| |
|---|
| Dometic® 321 China Bowl Stool or Macerator Stool* |
| Aqua Miser® Shower System |
| Tiled Shower Walls with Glass Door |
| Fold-Down Shower Seat* |
| Water Filter for Entire Unit |
| Exterior Shower |
| Auto Fill for Fresh Water Tank |
| Power Water Hose Reel |
| 12 Volt Dump Valves |
| 150 Gallon Fresh Water Tank |
| Grey Holding Tank Rinse |
| Bladder Tank for Water Pump System |
| Hot Water Line Run to Front Off-Door Side Storage Bay |

OPTIONS

| |
|------------------------------|
| Assist Handle in Each Shower |
| RV Sanicon Turbo System |

INTERIOR FEATURES

| |
|---|
| Tile Floor in Kitchen, Bathroom, Bedroom and Living Areas |
| Auto Motion Power Shades and Lambrequins |
| Interior Assist Handle at Main Entry Door |
| Fitted Non-Quilted Bedspread with Accent Pillows |
| Safe Located in Bedroom Wardrobe |
| Wastebasket in Kitchen Base Under Sink |
| Shoe Storage Shelves Recessed in Rear Cap of Wardrobe* |
| Flush Handles on Swinging Bath Doors |
| Hardwood Raised Panel Interior Passage Doors |
| Padded Vinyl Ceiling with Designer Feature Panels |
| Power Stepwell Cover |

CABINETS & FURNITURE

| |
|---|
| Sable Maple Hardwood Cabinets—Suede Finish |
| Concealed Hinges on Cabinet Doors |
| Super-Polished Solid-Surface Countertop in Kitchen with Undermounted Stainless Steel Sink and Sink Covers |
| Super-Polished Solid-Surface Countertop in Bathroom and Bedroom |
| Cooktop Cover Flush, Matching Countertop Material |
| Lifts on Bed Top |
| Pull-Out Pantry Shelves* |
| Push-to-Release Drawer Slides in Pantry |
| Pantry with Space for Serving Trays and Bakeware |

| |
|---|
| Soft-Close Side Hinge Cabinet Doors |
| Drawers with Dove Tail Sides with Self-Closing Full Extension Ball Bearing Guides |
| Villa Furniture |
| Plush Pillow Top Mattress |
| Extended Rotation Concealed Hinge for Washer and Dryer Cabinet Door |
| Mesh Cell Phone Holder at Each Bunk Bed* |
| Molded Silverware Divider Tray |
| Driver and Passenger Seats Air Ride with Electric Lumbar and Heat |

OPTIONS

| |
|---|
| Morel Maple Hardwood Cabinets—High Gloss or Suede Finish |
| Sable Maple Hardwood Cabinets—High Gloss Finish |
| Sedona Maple Hardwood Cabinets—High Gloss or Suede Finish |
| Summit Maple Hardwood Cabinets—High Gloss or Suede Finish |
| Two-Tone Summit Maple and Morel Maple Hardwood Cabinets—High Gloss or Suede Finish |
| Two-Tone Summit Maple and Sable Maple Hardwood Cabinets—High Gloss or Suede Finish |
| Two-Tone Summit Maple and Sedona Maple Hardwood Cabinets—High Gloss or Suede Finish |
| R5 Radius Corner Air Mattress |
| Convertible Dinette with Two Fixed and Two Folding Chairs that Face to Window |
| Combination Desk/Dinette with Buffet Table, Two Fixed and Two Folding Chairs |
| Euro Booth Dinette with Two Table Leaves and Two Folding Chairs |
| 162" Euro Booth/Hide-A-Bed Combo with Two Table Leaves and Two Folding Chairs |
| Two Recliners with Lampstand and Reading Lights |
| 74" Powered Theater Seating with Reading Lights and Lighted Cup Holders |
| 87" Powered Theater Seating with Reading Lights and Lighted Cup Holders |

APPLIANCES & ACCESSORIES

| |
|---|
| 30" Stainless Steel Convection Microwave with Air Fryer Feature |
| Air Horns |
| 19.7 Cu. Ft. Whirlpool® Refrigerator |
| Splendide® Two-Piece Stacked Washer and Dryer |
| All Electric Flush Mount Induction Cooktop |
| Central Vacuum with Tool Kit |
| OPTIONS |
| Dishwasher in Drawer with Stainless Steel Front Located Below Cooktop |
| Freezer on Pull-Out Tray in Exterior Compartment |
| Beverage Center Dual Zone |

AUDIO, VIDEO & ACCESSORIES

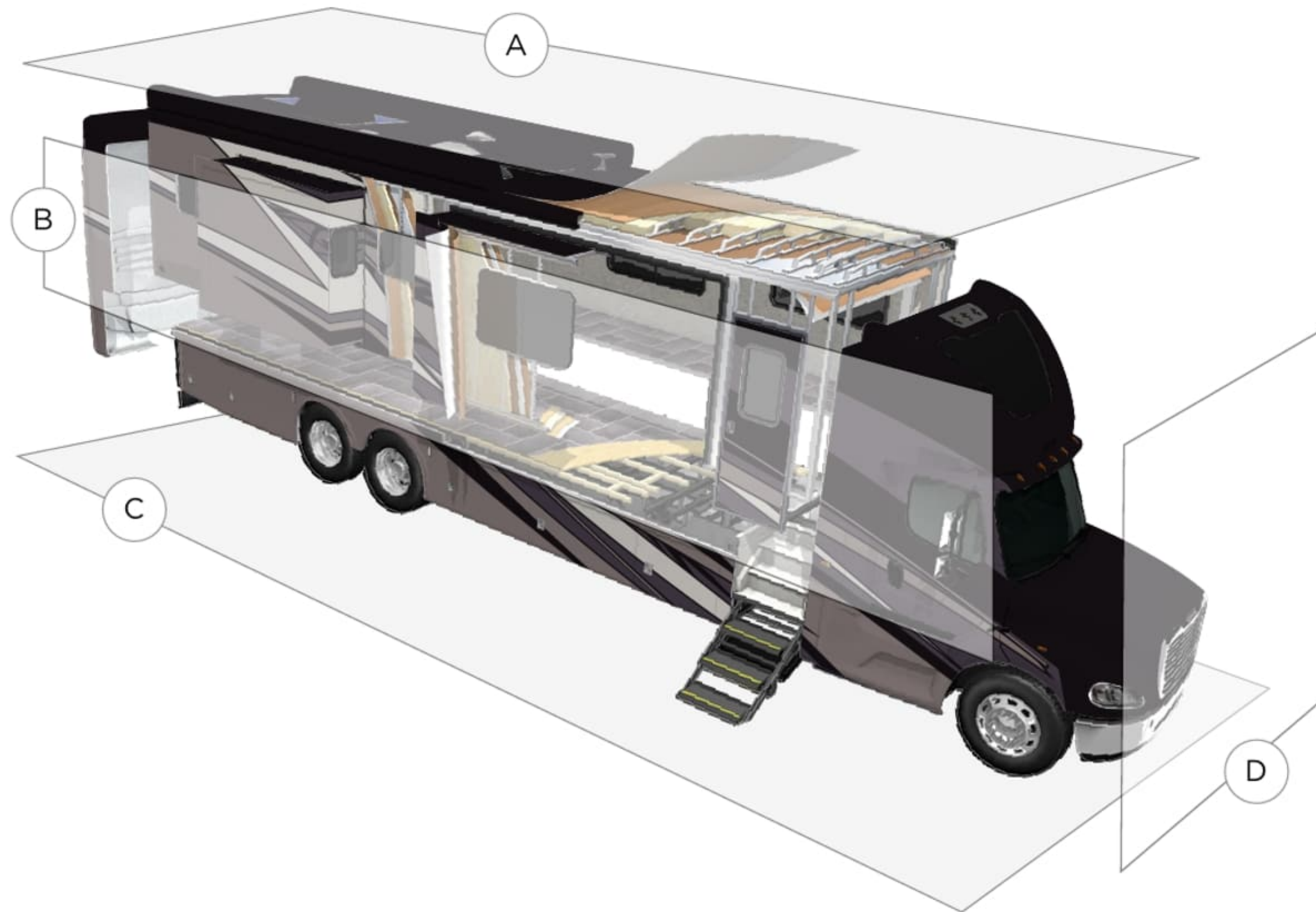
| |
|--|
| Samsung® LED TV in Living and Bedroom Areas* (TV Sizes Vary Per Floor Plan) |
| 50" Samsung® 4K LED TV on Televator in Living Area* |
| Bose® 900 Sound Touch in Living Room |
| Xite Dash Radio with Apple CarPlay®, 12.3" Single Monitor with Nav-N-Go Navigation |
| Winegard Rayzar Automatic Digital TV Antenna |
| Satellite Dish Prep on Roof |
| Two Bedroom Radio Speakers |
| TV Jack and 110 Volt Recept in Door Side Exterior Storage Compartment |
| Cat 6 TV Cables |
| CB Prep with Antenna |
| Infrared Repeater System to Operate Audio/Visual Components |
| WiFiRanger Denali/Spruce LTE |
| 10 Bc Fire Extinguisher, Smoke, Propane and Carbon Monoxide Detectors |
| Bose® 500 Subwoofer |
| Xite HD 360 Camera System with Predictive Grid Lines and Triview Rear-View Camera |

OPTIONS

| |
|---|
| Radio SiriusXM® Capability with Antenna (Does Not Include Monthly Subscription) |
| Exterior Entertainment Center in Storage Compartment with 43" Samsung® 4K LED TV and Bose® Soundbar |
| Exterior Entertainment Center in Sidewall with 43" Samsung® 4K LED TV and Bose® Soundbar |
| Camera Rear (2) Prep for Use with Stacker Trailer |
| Two 19" Skyworth TV/DVD Monitors at each Bunk* |
| Universal Toll Module |
| WiFi System Everest with Aspen Interior Router |
| Winegard Automatic Open Face Satellite Dish for DISH HD and Bell HD TV |
| Winegard Automatic Open Face Satellite Dish for DISH and Winegard In-Motion for DISH Network |
| Winegard Automatic Open Face SWM Satellite Dish for DIRECTV Std/HD |
| Winegard In-Motion Dome Satellite Dish for DISH Std/HD, DIRECTV Std and Bell Canada |

*Check with dealership on floor plan availability





A. ROOF

Fiberglass Roof
 Batten Insulation
 A/C Ducting
 16" on Center Aluminum Rafter Framing
 Kraft Paper Vapor Barrier
 5/8" Bead Foam
 3/16" Panel
 Padded Vinyl Overlay

B. SIDEWALL

Interior Wall Panel
 5/8" Bead Foam
 Kraft Paper Vapor Barrier
 Batten Insulation
 Composite One-Piece
 Gelcoat Exterior Sidewall
 Aluminum Framing

C. FLOOR

Carpet/Tile
 Carpet Padding
 5/8" Floor Decking
 Batten Insulation
 16" on Center Wood Framing
 Polyethylene Moisture Barrier

D. EXTERIOR

Two 15K BTU Penguin™ Heat Pump
 Air Conditioners
 One-Piece Bonded Windshield
 Coated Aluminum Wheels
 Frameless, Double-Pane,
 Tinted Safety Glass Windows
 Side-Hinged Baggage Doors with
 Optional Pull-Out Tray
 Batten Insulation in Front and Rear Cap

THE NEWMAR CUSTOMER EXPERIENCE

The Newmar Difference™ goes beyond our industry-leading motor coaches to provide you with an unrivaled ownership experience.



Quality from the Start

Every Newmar is crafted one at a time by folks who have spent an average of eight years building them. And each coach we assemble must undergo more than 1,000 tests and checks before ever leaving our factory.



Carefully Selected Dealers

We view our dealership network in terms of quality, not quantity. Each of our dealers acts as a partner in our shared mission to exceed your highest of expectations, for an ownership experience that's second to none from day one.



Everything in One Place

As a Newmar owner, you'll find resources specific to your coach through Newgle, an easy-to-use knowledge base that houses everything from user guides to technical support documents.



Friends for Life

Meet fellow owners through the Newmar Kountry Klub, a top social club for RV travelers that hosts rallies and other special events throughout the U.S. and Canada.



Seamless Service

When you join the Newmar family, we pair you with a dedicated service specialist with expert knowledge of your exact coach. Our service specialists guarantee dealer warranty authorizations within four business hours and ship all in-stock parts the same day, free of charge.



Rock-Solid Protection

All models include a one-year/unlimited mileage limited warranty and a five-year, non-transferable structural warranty that covers your coach's superstructure in the event it fails to perform. Ask your Newmar dealer for more details.

OUR PARTNERS

The Newmar Difference™ begins with suppliers dedicated to providing our customers with unrivaled quality, comfort, and support.



BASF

The Coatings division of BASF is a global expert in the development and production of innovative and sustainable OEM and refinish coatings. Coatings by BASF—solutions beyond your imagination.



Industrial Finishes

Industrial Finishes has supported RV manufacturers for over four decades, offering paint products that deliver uncompromising quality and provide your coach with a true Masterpiece™ finish.



Driven By You

Freightliner Custom Chassis

Freightliner Custom Chassis are renowned for their exceptional ride, excellent maneuverability, advanced technology, and nationwide 24/7 factory-direct support.



RiverPark

From Samsung® 4K TVs and Xite Infotainment systems to Bose® soundbars and JBL and Infinity premium audio systems, RiverPark helps you experience a higher level of technology in your Newmar coach.



Spartan RV Chassis

An American company with over 30 years of experience in designing and manufacturing the premier motorhome chassis, Spartan delivers superior performance, exceptional safety ratings, and industry-leading technology.



WHEN YOU KNOW THE DIFFERENCE™