



AIRSTREAM® Atlas

2026 TOURING COACHES



About Atlas

With its roomy interior, expansive bathroom, and full slate of amenities, the Atlas Touring Coach is the crown jewel of our luxurious line of motorized touring coaches. It's built on the legendary Mercedes-Benz® Sprinter cab chassis and inspired by our trailblazing Airstream Interstate series. But Atlas is no ordinary motorhome: With its wide body, power slide-out, and understated automotive styling from grill to bumper, we affectionately call it a Class B+. Atlas is the standard for those who believe a well-traveled life begins with the very best.

Atlas is designed to give travelers plenty of room to start with — and then expand to make things even roomier and more luxurious via a power slide-out. The fully appointed interior features a wide galley, residential-style bathroom, and a plush lounge that converts to a bed with the push of a button. Solid-surface countertops, seemingly endless amounts of overhead storage, and touchscreen interfaces round out the Atlas experience.

On the road, the Atlas provides a driving experience par excellence. A 2.0L turbo charged high output 4-cylinder diesel engine delivers power and performance under the hood, and we select every available safety and comfort feature Mercedes-Benz offers. With the Advanced Power system, and up to 17.3kWh of usable power in the optional Advanced Power Plus, you have more power, simplicity, and off-grid capability.



Solid surface countertops in the galley



Lounge converts to spacious Murphy Suite



Elegant residential-style bathroom

Décors

“ We love how the soft woodgrain and bright finishes in Classic Canyon really expands an already spacious interior and makes it feel even more open and airy.” **MIRANDA** Atlas Owner



Classic Canyon



Modern Greige



Exterior Color



High-Tech Silver

Exquisite, prestigious, and gracefully distinguished



Classic Canyon Décor Shown



Floor Plan

Atlas is the first Airstream motorhome to include a power slide-out, and we've taken care to do it right. On the road, the slide-out is retracted and fits seamlessly with the hand-crafted automotive body style. At the campground, it extends with the touch of a button on the multiplex control panel. Once extended, you have more room to relax on the couch or pull down the Murphy bed to turn in for the night.

A spacious bathroom spans the entire rear of the motorhome. Behind the sliding pocket door is a residential-style space with a stunning shower, a closet and vanity, and a toilet. Enjoy continuous hot water, faucets and fixtures, and special touches like a teak shower inlay and LED accent lighting.

Exterior Features

With its wide stance and hand-crafted automotive styling, Atlas is a time-tested work of Airstream craftsmanship. An extensive paint and bodywork process is complemented by Triple Nickel Chrome Finished wheels for sleek automotive styling. Air ride suspension delivers an exceptionally smooth driving experience while a full slate of sensors, cameras, and drive assist features provide best-in-class safety and awareness. Ample external storage is cleverly hidden behind locking body panels and a power entry step conveniently retracts out of sight. At the campsite, the powered armless awning creates a wide outdoor seating area with ample LED lighting incorporated into the patio and undercarriage. The new Advanced Power System offers industry-leading battery capacity and the convenience of a single-fuel-source design—delivering greater flexibility, freedom, and off-grid capability than ever before.



1 Refined new grille adds subtle sophistication to familiar Airstream styling.



2 A powered, armless awning creates a wide exterior seating area.



3 Stay connected with a Starlink High Performance In-Motion system that comes standard. *****



4 Air Ride Suspension delivers an exceptionally smooth ride with less road noise.



5 Safety sensors and cameras provide 360-degree awareness and peace of mind.



6 Upgrade to the Advanced Power Plus System for even more power and off-grid capability.

Specifications

Chassis	Mercedes-Benz® Sprinter 4500
Engine	Mercedes-Benz® 2.0L Turbo Charged High Output 4 Cylinder Diesel
Emissions	BlueTEC SCR Technology, 50 State – EPA/CARB Standards
Horsepower	208 HP / 332 lbs torque
Transmission	9G-Tronic Plus
Wheelbase	170"
MPG*	16-18 Estimated Highway
Chassis Safety System	Mercedes-Benz® Adaptive ESP® (Electronic Stability Program)
GVWR/GCWR	12,125 lbs / 15,250 lbs
Tow Package	Mercedes-Benz® Hitch, 7 Pin Trailer Plug, Brake Control Pre-wired
Tow Capacity**	Up to 4,000 lbs
Trailer Safety System	Mercedes-Benz® Trailer Stability Assist System
Overall Length	24 ft. 9 in.
Overall Height	10 ft. 6 in. (including A/C)
Overall Width	7 ft. 11 in.
Interior Height/Width	6 ft. 6 in. / 7 ft. 4.5 in.
Seats/Sleeps	4/2
Tank Capacities	23 gals (Fresh), 31 gals (Grey), 27 gals (Waste)
Diesel Fuel	24.5 gals
Air Conditioner	15,000 BTU Quietstream™ Ducted with Heat Pump
Heated Tanks	Fresh and Grey Tanks (12V)
Refrigerator & Freezer	9.1 cu. ft. (2.5 cu. ft. freezer) (12V)
Microwave	1.1 cu. ft. Convection Microwave
Plumbing System	Macerator Pump System w/ Electric Retract
Starlink Flat High Performance In-Motion*****	STD
TV Antenna	Omni-Directional, VHF/UHF/FM
TV Cable	Cable TV Outlets/Hook-ups
TV Satellite	Pre-wired for Satellite Dish
5G Pre-Wire	Pre-wired for Connected Service

Electrical System	Multiplex Bluetooth App Control System with Touch Screen for Energy Management System
Shore Power	30A Service with Smart Plug
Solar Power	400W Total (100W Chassis / 300W House)
Hydraulic Leveling Jacks	STD
Support	3 Year 24/7 Coach-Net® Roadside Assistance
Warranty***	2 Year Airstream Limited Warranty
(Chassis specs may vary, contact your Airstream Dealer)	5 Years/75,000 Miles Mercedes-Benz® Chassis 5 Years/100,000 Miles Mercedes-Benz® Engine & Drive Train

Advanced Power System

UWV ****	10,227 lbs
OCCE****	1,898 lbs
Batteries (Coach)	Advanced Power: Deep Cycle Lithium Batteries w/ Built In Heater - 10.3kWh
Generator	-
Inverter	3,000W Pure Sine Inverter
Converter	130A Multi-stage Charger
Secondary Alternator	311A Alternator, 12V w/ Regulator
LPG	-
Furnace	Diesel-Fired Hydronic Heating
Water Heater	Diesel-Fired Hydronic Hot Water
TV Cable/Satellite Port Ethernet	Cable TV Outlets/ Hook-ups External Ethernet Port
Cooktop	1,000W Single Burner Induction
Safety Components	Smoke and CO2 Alarm, Fire Extinguisher, First Aid Kit

Cockpit

Power Adjustable Heated Driver/ PassengerSeats	STD
Tilt & Telescopic Leather Steering Wheel	STD
Advanced Multifunctional Steering Wheel	STD
Push Button Keyless Start	STD
Steering Wheel Paddle Shifters	STD
In-Dash Wireless Cell Phone Charging	STD
Overhead Map Lights	STD
In-Dash Maintenance Monitoring System	STD
MBUX Infotainment System (Mercedes-Benz User Experience) touch screen, pinch, zoom, voice recognition, Apple Carplay, Android capability	STD
Rear View Camera Monitor	STD
Custom Carpet Floor Mats	STD
Privacy Shades	STD

Generator Power System

UWV ****	10,129 lbs
OCCE****	1,996 lbs
Batteries (Coach)	Deep Cycle Lithium Batteries with Built In Heater - 2.5kWh
Generator	3.6 kW (LP) with Remote Start
Inverter	1,000W Pure Sine Inverter
Converter	50A Multi-stage Charger
Secondary Alternator	170A Alternator, 12V, 2,040W
LPG	9.7 gals (41 lbs) 80% fill
Furnace	19,000 BTU
Water Heater	60,000 BTU On-Demand Continuous Flow
TV Cable/Satellite Port Ethernet	Cable TV Outlets/ Hook-ups
Cooktop	2 Burner LP with Integrated Cover
Safety Component	LP Gas Detector, Smoke and CO2 Alarm, Fire Extinguisher, First Aid Kit

Exterior

Full Body Kit	STD
Hidden Hitch Cover Rear Bumper	STD
Fog Lamps	STD
Triple Nickle Chrome Finished Wheels	STD
High Performance Headlights	STD
Power Armless Awning w/Auto Retract	STD
Power Entry Step	STD
LED Lighting - patio, service box locations, adjustable awning, under carriage	STD
Locking Service Boxes	STD
Exterior Shower with Hot & Cold Water	STD
Side Screen Door	STD

Main Cabin

Signature Aluminum Ceiling & Trim	STD
Matte Finish Laminate Cabinetry	STD
Flush-Mount Cabinet Hardware & Soft Close Doors	STD
Ultraleather™ Seating	STD
Vinyl w/Urethane Covering on Walls & Windows	STD
Power Window Shades	STD
Marine Woven Synthetic Flooring	STD
Adjustable LED Lighting	STD
LED SMART Widescreen HDTV	STD
Power Sofa	STD
Integrated Murphy Bed (73" x 73")	STD
Exhaust Fan with Thermostat and Rain Cover	STD

Bathroom

Porcelain Toilet	STD
Corner Shower with Teak Inlay	STD
Medicine Cabinet With Mirror	STD
Riveted Aluminum Porthole Door	STD
Kohler Faucet, Shower Head and Sink	STD
Towel Rack	STD

Galley

Solid Surface Countertop with Backsplash	STD
Solid Surface Galley Slide-Out Shelf	STD
Sink	STD
Cooktop	STD

* Actual mileage may vary due to load, driving style, and overall conditions.
** Typical tow capacity will vary and is dependent upon build spec and intended vehicle loading with people, cargo, and fluids.
*** New Vehicle Limited Warranty. Individual components may vary. See Owners Manual for specific warranty coverage and information.
**** Weights are approximate. See Vehicle Sticker for specific vehicle information.
***** Starlink service plan required.

Why You'll Love It

Featuring the only slide-out in Airstream's fleet, Atlas's interior space expands at the push of a button, revealing a cleverly concealed Murphy Bed when it's time to catch some rest.

Marvel at the residential-style bathroom that spans the entire rear of the coach, complete with a teak-inlaid shower, wide sink counter, and toilet.

Relax with a premium audio system and flat screen television that lowers into a concealed position when not in use.

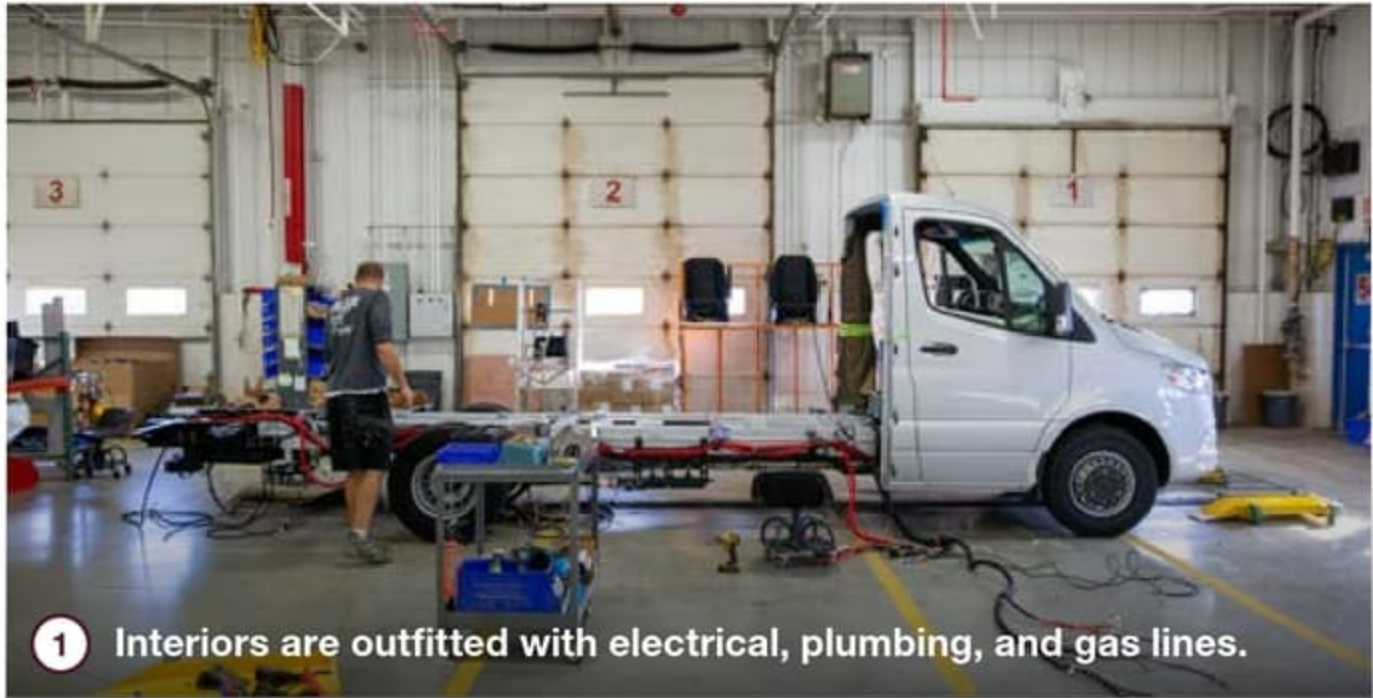
Fifteen coats of cut-and-buff paint and finishing work completes Atlas's sleek automotive exterior styling.



How It's Made

Each Mercedes-Benz cab chassis arrives in Jackson Center fully loaded with safety and security features and one of the most powerful and dependable engines under the hood. Our expert craftspeople hand-build the exterior walls and roof in-house while undercarriage features like generators, holding tanks, and batteries are installed. Standard seats are removed and re-upholstered with plush Ultraleather, while the interior is outfitted with electrical wiring harnesses, plumbing, gas lines, and comfort systems. We handcraft every cabinet and storage locker in our woodshop, which are then installed along with the shower, seating, and galley appliances. Extensive paint and fiberglass bodywork completes the exterior. And like every Airstream product, Atlas is put through an extensive water check to ensure there are no leaks before quality inspection teams test every component, system, and function before it goes out the door to a customer.

Schedule a factory tour



419 West Pike Street,
P.O. Box 629
Jackson Center, OH
45334 USA
937-596-6111

www.airstream.com

AIRSTREAM[®] + **Mercedes-Benz[®]**

Roll with the Best[®]

Product information, specifications, and photography in this brochure were as accurate as possible at time of printing. Photographs may contain some features that are optional on your vehicle.

Since we continually strive to improve our products, actual products may differ. Prices and specifications are subject to change without notice. All capacities are approximate and dimensions are nominal. Some features or options may be different or unavailable in other countries.

WARNING – The recreational vehicle weight must remain within the manufacturer's specified chassis weight limit. Do not overload the recreational vehicle through the addition of water, options, cargo or otherwise. Your safety depends on not overloading the trailer, axles, and tires.

AIRSTREAM[®], the Airstream travel trailer trade dress, and all related model names, slogans, logos, trade dress, and trademarks are owned or used under license by Airstream, Inc. All other trademarks are owned by their respective owners.