



AIRSTREAM® Interstate 19GT

2026 TOURING COACHES



TYSON MCGUFFIN - Pickleballer


A Winning Combination of Luxury and Efficiency

Interstate 19GT is our smallest, nimblest touring coach yet. At 19 feet, it's only slightly longer than the average SUV on the road. That means easy parking and maneuvering to just about any location. With 10.3 kWh of lithium power, this innovative system fuels your appliances, outlets, and induction cooktop—so you can enjoy off-grid comfort without sacrificing the everyday conveniences.

For **pro pickleballer Tyson McGuffin**, little things make all the difference. He practices his serve, volley, and groundstroke hundreds of times in preparation for each match. He lifts weights, targets endurance, and zones in on the mental game, so that he can rally when he needs to.

Off the court, having familiar snacks and meals on-hand, being able to park close to the venue, and knowing he can rely on comfortable A/C, help Tyson to perform better and recover quicker.

Tyson's quest to be the best pickleball player in the league is a family affair. His wife, Megan, and their four children, are always there to cheer him on. This journey wouldn't be possible without his team. And the Interstate 19GT makes the whole team comfortable.



GAME TIME? LET'S ROLL!

Tyson, Megan, and the kids are often up early and eager for their routine of pickleball practice, healthy meals, and a decent dose of fun.

And when it's game time, Tyson knows he can count on the family to keep him balanced, focused, and feeling strong. Pickleball tournaments involve long hours in the sun, and having a homebase like the Interstate 19GT is a relief both mentally and physically. Tyson relies on his van to keep his recovery devices, supplements, and protein drinks close-by.

It's an escape from the chaos

that comes with pickleball play in particular, and life in general. In the Interstate 19GT, Tyson has everything he needs close at hand. Supplements and fresh fruit in the fridge. Space to store training gear. Comfortable seating to recuperate on after a grueling match. And a flatscreen TV to review game video and prepare for the next one.

After a full day of performing, followed by signing autographs and meeting with fans, the Interstate is a home away from home for Tyson, no matter where he goes.

“It's just the consistency of being able to come back to the touring coach and sit in a space that's super comfortable,”

TYSON McGUFFIN

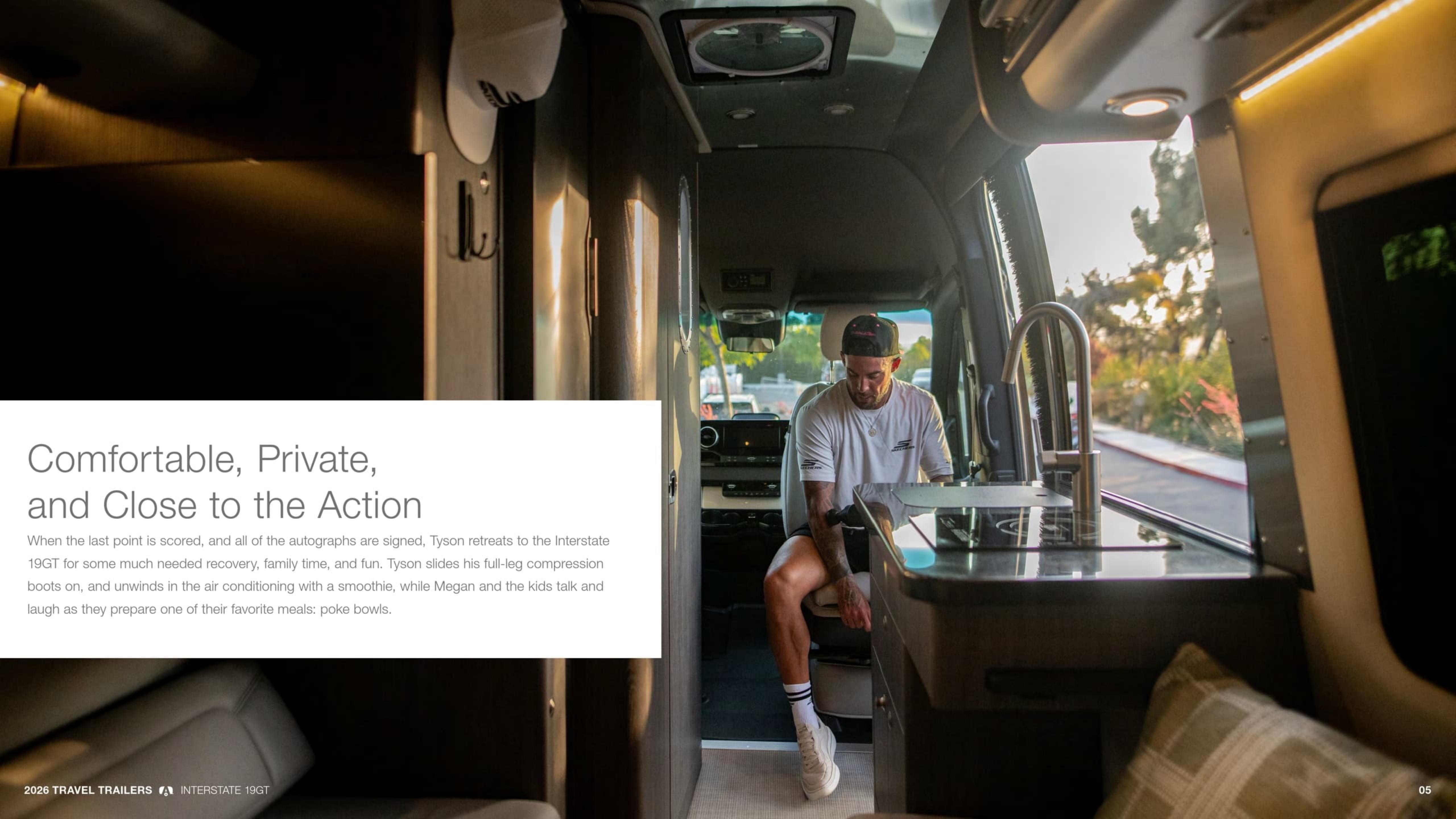
Pro Pickleballer



When it hits just right

everyone feels it. The whole family celebrates when Tyson wins. And they celebrate a lot. But the rewards come in other ways, too. Not only is Tyson's tournament schedule (and the stands) packed, he also teaches, coaches, and makes all kinds of public appearances with sponsors and brands. Helping others is an even better win in his book.



A man in a white t-shirt and a black baseball cap is sitting on a stool at a kitchen counter inside a travel trailer. He is looking down at something on the counter. The counter has a stainless steel sink and a faucet. There is a window behind him showing a view of trees and a road. The interior of the trailer is modern with wood paneling and a ceiling-mounted TV.

Comfortable, Private, and Close to the Action

When the last point is scored, and all of the autographs are signed, Tyson retreats to the Interstate 19GT for some much needed recovery, family time, and fun. Tyson slides his full-leg compression boots on, and unwinds in the air conditioning with a smoothie, while Megan and the kids talk and laugh as they prepare one of their favorite meals: poke bowls.

Unmatched Competition

Pickleball requires strength, but also precision. It's as much about stamina as it is about grace and skill. The same is true for the Interstate 19GT. With ample storage in overhead lockers and cabinetry, you can bring along all of your gear and necessities. And every detail is thought of and put into practice, so that you can stay organized and ready to go.



Go Farther and Stay Longer

The 2026 Interstate 19GT's standard Advanced Power System gives you the freedom to camp at the mountains, the beach, or courtside. Designed for comfort and connection, it delivers reliable, renewable power every time you hit the road.

Details:

- 10.3 kWh Lithium Battery
- 250W Solar Power
- 3,000W Inverter
- Single Fuel Source Heating + Hot Water
- All-Electric Appliances

Upgrade to **Advanced Power Plus**

For extended trips and off-grid stays, the optional Advanced Power Plus upgrade boosts battery capacity to 17.2 kWh. Installed by your dealer, it supports multi-night use and more energy-intensive needs.

Note: Advanced Power Plus for Interstate 19GT is a dealer-installed upgrade option.





The Comforts of Home, Anywhere

From cross-country treks, to weekend escapes, the Interstate 19GT is packed with features that make it stress-free and fun. It starts with the foundation of a Mercedes-Benz® Sprinter 2500 van chassis, and adds best-in-class features as standard, not upgrades. You can control the shades, interior lighting, the outdoor powered awning, air conditioning, and generator power with one touch on the touchscreen. The European-style wet bath in the Interstate 19GT neatly houses a sink, shower, and toilet – everything you need to feel clean and energized on the road.



“ Having it be accessible at tournaments – having it be right in the parking lot... it's a place that I can come back to either before matches or after matches... it feels like home.”

– TYSON McGUFFIN

Interior Features

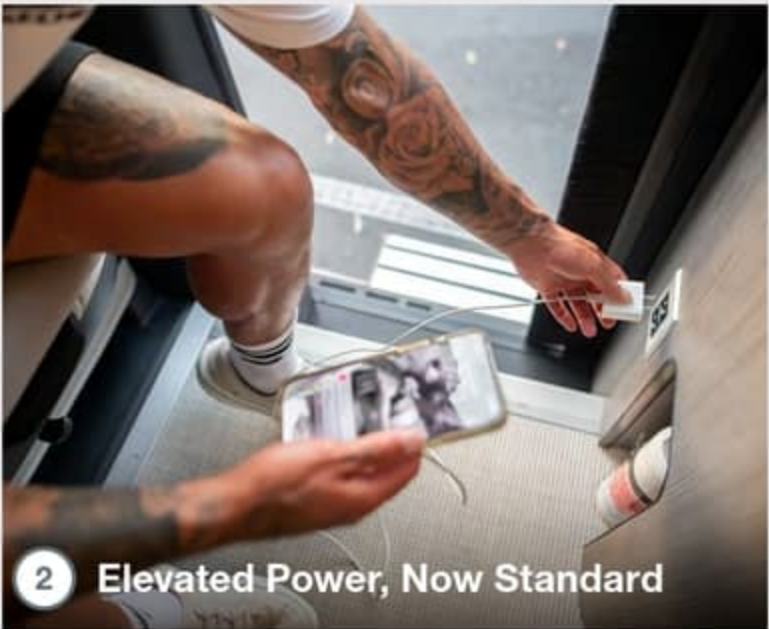
Interstate 19GT's thoughtful design delivers everything you need for exceptional travel experiences. You feel it in the surfaces, the fabric choices, and the clever use of space. Its plush Ultraleather seating and marine-grade vinyl flooring are durable and easy-to-clean. Spacious overhead storage lockers keep things secure in transit and close at hand when you need it. And at the push of a button, the sofa converts to a wide sleeping area so you can wake up ready to tackle the next hike, the next match, or the next day on the water.

[Explore More Interstate 19GT Features](#)



1 Largest Bed in its Class

Push-button sofa conversion for ultimate relaxation



2 Elevated Power, Now Standard

Powerful off-grid energy independence for more versatile travel



3 Multiplex Control and Monitoring

Control shades, A/C, lighting and monitor tanks and power levels



4 Versatile Wet Bath

European-style wet bath neatly organizes everything in one space



5 Modern D cor

Choose from three d cor packages to match your style



6 Efficient Galley

Induction cooktop, large sink, and plenty of counter space

Décor

“It feels so modern, with a bright-airy interior that seems much larger than just 19 feet.”
BRUCE Interstate 19GT Owner



Seating

Flooring

Countertop

Cabinetry

Walls

Classic Canyon



Seating

Flooring

Countertop

Cabinetry

Walls

Modern Greige

Décor

AIRSTREAM® + *Tommy Bahama®*



Seating

Flooring

Countertop

Cabinetry

Walls



Tommy Bahama® Resort Edition

The 19GT Floor Plan

The Interstate 19GT is one of Airstream's most compact and luxurious motorized models. The powerful Mercedes-Benz® turbo diesel engine makes the Interstate 19GT driving experience so enjoyable – with powerful getup balanced with impressive fuel economy. And with the standard Advanced Power System, you can run the A/C, appliances, and power your life even when far from a traditional campsite.

Modern Greige



Classic Canyon



Tommy Bahama® Resort Edition



Exterior Features

Built on the powerful performance of the legendary Mercedes-Benz Sprinter van chassis, the Interstate 19GT is packed with exterior features that prioritize entertaining, camping, and enjoying the outdoors. The sliding door automatically opens, and a powered step extends for easy entrance. With the new Advanced Power System, roof-mounted solar panels, and upgraded components, you'll have all the power you need to confidently take on the road ahead.



1 250 watts of solar panels on the roof harvest the free, abundant power of the sun.



2 The powered awning extends and retracts at the push of a button.



3 The standard Advanced Power Package combines a powerful battery system with a convenient single-fuel-source heating and hot water system.



4 Refined new grille adds subtle sophistication to familiar Airstream styling.



5 Safety sensors positioned around the exterior of the coach give you comprehensive situational awareness.



6 Mercedes-Benz performance under the hood is anchored by a powerful and efficient diesel engine.



Exterior Colors



Tenorite Grey Metallic

Elegant, understated and ready to roam



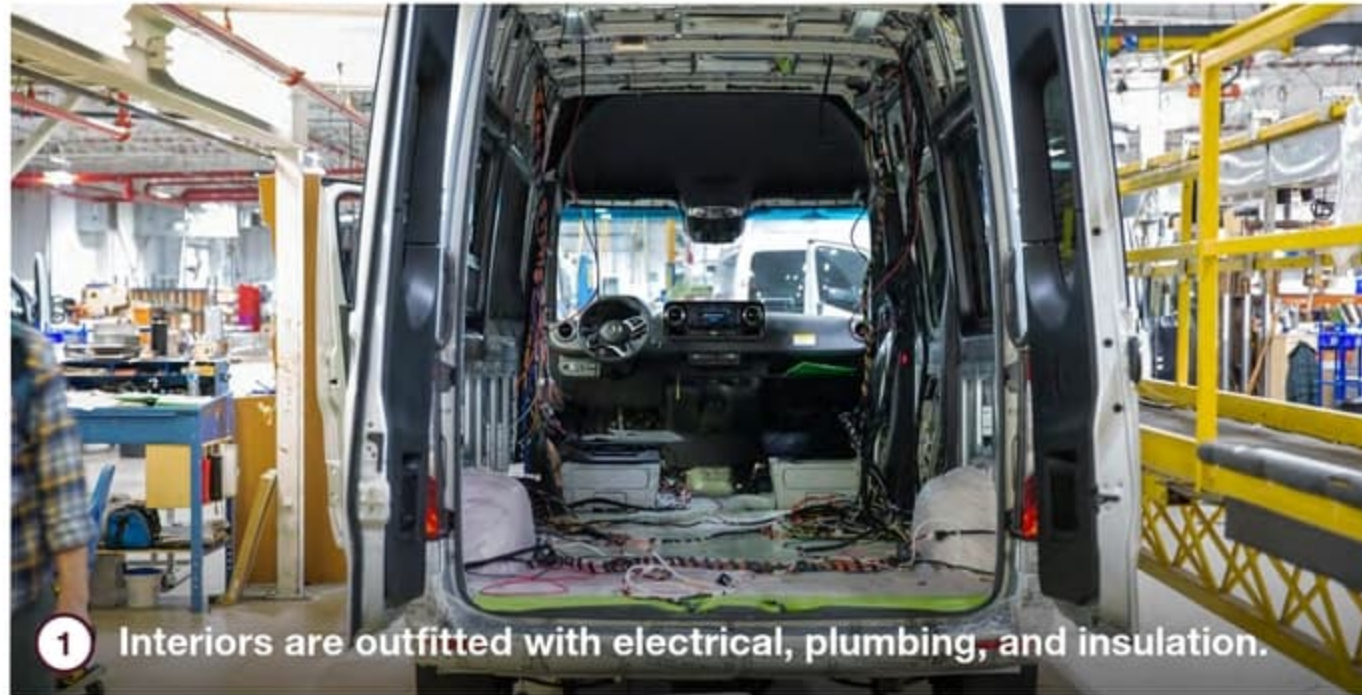
Hightech Silver

Exquisite, prestigious, and gracefully distinguished

How It's Made

Each Mercedes-Benz® Sprinter van chassis arrives in Jackson Center, Ohio fully loaded with safety and security features and one of the most powerful and dependable engines under the hood. Our expert craftspeople add external features like RV windows, vents, air conditioners, awnings, and undercarriage features like holding tanks and batteries. Standard seats are removed and re-upholstered with plush Ultraleather, while the interior is outfitted with electrical wiring harnesses, plumbing, and insulation. We hand-craft every cabinet and storage locker in our woodshop, which are then installed alongside showers, beds, tables, and kitchen appliances. Every Airstream touring coach is put through an extensive water check to ensure there are no leaks before quality inspection teams test every component, system, and function before it goes out the door to a customer.

[Schedule a factory tour](#)



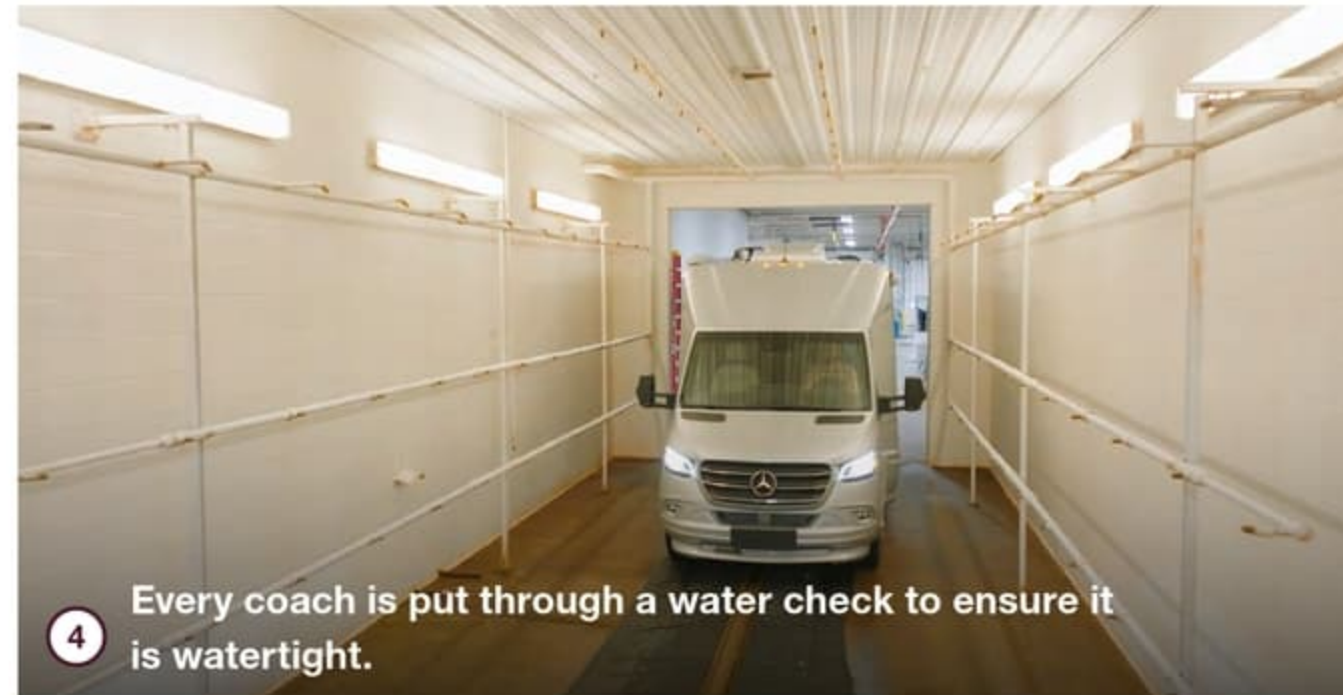
1 Interiors are outfitted with electrical, plumbing, and insulation.



2 Seating is upholstered in-house with Ultraleather fabric.



3 Cabinetry and furniture is handcrafted and expertly installed.



4 Every coach is put through a water check to ensure it is watertight.

Specifications

Chassis	Mercedes-Benz® Sprinter 2500 Extended AWD
Engine	Mercedes-Benz® 2.0L Turbo Charged 4-Cylinder High Output Diesel
Horsepower/ Torque	208 HP @ 3,600 RPM 332 lb-ft torque @ 1400 - 2400 RPM
Transmission	9G-TRONIC Plus Automatic
GVWR/GCWR	9,050 lbs/13,930 lbs
UVW****	7,827 lbs
OCOC****	1,223 lbs
Tow Capacity**	Up to 5,000 lbs
Overall Height	9 ft. 9 in. (including A/C)
Emissions	BlueTEC SCR Technology, 50 State – EPA/CARB Standards
Wheelbase	144"
MPG*	16-18+ Estimated Highway
Chassis Safety System	Mercedes-Benz® Adaptive ESP® (Electronic Stability Program)
Tow Package	Mercedes-Benz® Hitch, 7 Pin Trailer Plug, Brake Control Pre-Wired
Trailer Safety System	Mercedes-Benz® Trailer Stability Assist System
Overall Length	19 ft. 5 in.
Overall Width	7 ft. 8.5 in (with Mirrors), 6 ft. 7.5 in.
Interior Height/ Width	6 ft. 2 in. / 5 ft. 10 in.
Seats/Sleeps	4/2
Tank Capacities	20 gals (Fresh), 16 gals (Grey), 9 gals (Waste)
Diesel Fuel	24.5 gals
Air Conditioner	13,500 BTU with Soft Start
Furnace	Diesel Fired Hydronic Heating
Water Heater	Diesel Fired, On-Demand Hot Water
Heated Tanks	Fresh and Grey Tanks (12V)
Refrigerator and Freezer	3.2 cu. ft. Fridge/ .25 cu. ft. Freezer (12V)
Microwave	0.7 cu. ft. Drawer Microwave

Cooktop	1,000W Single Burner Induction
Safety Components	Smoke and CO ₂ Alarm, Fire Extinguisher and First Aid Kit
Plumbing System	Macerator Pump System
TV Antenna	Omni-Directional, VHF/UHF/FM
Cable Satellite Ethernet	Cable TV Outlets/Hook-ups External Ethernet Port
TV Satellite	Pre-Wired for Satellite Dish
5G Pre-wire	Pre-Wired for Connected Service
Electrical System	Multiplex Bluetooth App Control System with Touch Screen for Energy Management System
Converter/Inverter	130A Multi-Stage Charger, 3,000W Pure Sine Inverter
Batteries (Coach)	Advanced Power: Deep Cycle Lithium Batteries with Built In Heater - 10.3kWh Advanced Power Plus (Optional): Deep Cycle Lithium Batteries with Built In Heater - 17.2kWh *See Your Local Dealer About This Upgrade Option
Shore Power	30A Service with Smart Plug
Solar Power	250W and External Solar Ports
Support	3 Year 24/7 Coach-Net® Roadside Assistance
Warranty***	2 Year Airstream Limited Warranty
(Chassis specs may vary, contact your Airstream Dealer)	5 Years/75,000 Miles Mercedes-Benz® Chassis 5 Years/100,000 Miles Mercedes-Benz® Engine and Drive Train

Safety

Multiple Safety Air Bags	STD
Active Brake Assist	STD
Active Lane Keeping Assist	STD
Active Distance Assist - Distronic Plus	STD
Active Driver Attention Assist	STD
E-Call Assist	STD
Traffic Sign Assist	STD
Wet Wiper System	STD
360 Degree Camera	STD
Tire Pressure Monitoring System	STD

Cockpit

Power Adjustable Heated Driver / Passenger Seats	STD
Tilt and Telescopic Leather Steering Wheel	STD
Advanced Multifunctional Steering Wheel	STD
Push Button Keyless Start	STD
Heated Steering Wheel	STD
Steering Wheel Paddle Shifters	STD
Entry Door Lighting	STD
In-Dash Wireless Cell Phone Charging	STD
Overhead Map Lights	STD
In-Dash Maintenance Monitoring System	STD
MBUX Infotainment System (Mercedes-Benz User Experience) Touch Screen, Pinch, Zoom, Voice Recognition, Apple Carplay, Android Capability	STD
Rear View Camera Monitor	STD
Custom Carpet Floor Mats	STD
Privacy Shades	STD
Rear Cabin Carpet Kit	OPT

Exterior

Full Body Kit	STD
Hidden Hitch Cover Rear Bumper	STD
Fog Lamps	STD
Mercedes-Benz Aluminum Wheels	STD
High Performance Headlights	STD
Power Heated Mirrors	STD
Power Armless Awning with Auto Retract	STD
Power Entry Step (Sliding Side Door)	STD
LED Lighting - Patio, Service Box Locations, Adjustable Awning, Under Carriage	STD
Locking Service Boxes	STD
Exterior Shower with Hot and Cold Water	STD
Power Rear Screen	STD
Side Screen Door	STD
Power Sliding Door	STD

Main Cabin

Signature Aluminum Ceiling and Trim	STD
Matte Finish Laminate Cabinetry	STD
Flush-Mount and Solid Shut Cabinets	STD
Ultraleather™ Seating	STD
Vinyl with Urethane Covering on Walls and Windows	STD
Power Window Shades	STD
Marine Woven Synthetic Flooring	STD
Adjustable LED Lighting	STD
Adjustable Swivel Table (1)	STD
LED Widescreen SMART HDTV	STD
Power Rear Sofa Converts to Lay Flat Bed	STD
USB Charging Ports	STD
Exhaust Fan	STD

Bathroom (Wet Bath)

Toilet	STD
Shower	STD
Sink with Articulated Mirror	STD
Riveted Aluminum Porthole Door	STD
Retractable Clothes Line	STD
Towel Rack	STD

Galley

Solid Surface Countertop with Backsplash	STD
Solid Surface Galley Slide-Out Shelf	STD
Sink with Cover	STD
Single-burner induction cooktop	STD
Under Counter Lighting	STD

* Actual mileage may vary due to load, driving style, and overall conditions.
** Typical tow capacity will vary and is dependent upon build spec and intended vehicle loading with people, cargo, and fluids.
*** New Vehicle Limited Warranty. Individual components may vary. See Owners Manual for specific warranty coverage and information.
**** Weights are approximate. See Vehicle Sticker for specific vehicle information.



419 West Pike Street,
P.O. Box 629
Jackson Center, OH
45334 USA
937-596-6111

www.airstream.com

AIRSTREAM[®] + **Mercedes-Benz[®]**

Roll with the Best[®]

Product information, specifications, and photography in this brochure were as accurate as possible at time of printing. Photographs may contain some features that are optional on your vehicle.

Since we continually strive to improve our products, actual products may differ. Prices and specifications are subject to change without notice. All capacities are approximate and dimensions are nominal. Some features or options may be different or unavailable in other countries.

WARNING – The recreational vehicle weight must remain within the manufacturer's specified chassis weight limit. Do not overload the recreational vehicle through the addition of water, options, cargo or otherwise. Your safety depends on not overloading the trailer, axles, and tires.

AIRSTREAM[®], the Airstream travel trailer trade dress, and all related model names, slogans, logos, trade dress, and trademarks are owned or used under license by Airstream, Inc. All other trademarks are owned by their respective owners.