

AURORA



FOREST RIVER

FORESTRIVERINC.COM

AURORA LIGHT TRAVEL TRAILERS

13 BHX

| | | | |
|-------------------------|-------|-------------------------------|-------|
| HITCH WEIGHT (LB.) | 348 | UVW (LB.) | 2,643 |
| CARRYING CAPACITY (LB.) | 1,500 | EXT. LENGTH (BUMPER TO HITCH) | 16' |



13 RDX

| | | | |
|-------------------------|-------|-------------------------------|-------|
| HITCH WEIGHT (LB.) | 304 | UVW (LB.) | 2,651 |
| CARRYING CAPACITY (LB.) | 1,500 | EXT. LENGTH (BUMPER TO HITCH) | 16' |



13 RKX

| | | | |
|-------------------------|-------|-------------------------------|-------|
| HITCH WEIGHT (LB.) | 277 | UVW (LB.) | 2,705 |
| CARRYING CAPACITY (LB.) | 1,572 | EXT. LENGTH (BUMPER TO HITCH) | 16' |



18 BHSX

| | | | |
|-------------------------|-------|-------------------------------|--------|
| HITCH WEIGHT (LB.) | 556 | UVW (LB.) | 4,183 |
| CARRYING CAPACITY (LB.) | 1,473 | EXT. LENGTH (BUMPER TO HITCH) | 23' 1" |



19 RBS

| | | | |
|-------------------------|-------|-------------------------------|--------|
| HITCH WEIGHT (LB.) | 684 | UVW (LB.) | 5,221 |
| CARRYING CAPACITY (LB.) | 2,000 | EXT. LENGTH (BUMPER TO HITCH) | 25' 6" |



21 BH

| | | | |
|-------------------------|-------|-------------------------------|---------|
| HITCH WEIGHT (LB.) | 514 | UVW (LB.) | 4,575 |
| CARRYING CAPACITY (LB.) | 2,000 | EXT. LENGTH (BUMPER TO HITCH) | 25' 11" |



26 BH

| | | | |
|-------------------------|-------|-------------------------------|--------|
| HITCH WEIGHT (LB.) | 544 | UVW (LB.) | 5,018 |
| CARRYING CAPACITY (LB.) | 1,500 | EXT. LENGTH (BUMPER TO HITCH) | 29' 4" |



26 BHS

| | | | |
|-------------------------|-------|-------------------------------|--------|
| HITCH WEIGHT (LB.) | 774 | UVW (LB.) | 6,066 |
| CARRYING CAPACITY (LB.) | 1,500 | EXT. LENGTH (BUMPER TO HITCH) | 30' 5" |



28 QBUNK

| | | | |
|-------------------------|-------|-------------------------------|--------|
| HITCH WEIGHT (LB.) | 976 | UVW (LB.) | 7,374 |
| CARRYING CAPACITY (LB.) | 1,500 | EXT. LENGTH (BUMPER TO HITCH) | 36' 2" |



15 RBX

| | | | |
|--------------------------------|-------|--------------------------------------|--------|
| HITCH WEIGHT (LB.) | 432 | UVW (LB.) | 3,105 |
| CARRYING CAPACITY (LB.) | 1,327 | EXT. LENGTH (BUMPER TO HITCH) | 19' 6" |



15 RDX

| | | | |
|--------------------------------|-------|--------------------------------------|--------|
| HITCH WEIGHT (LB.) | 384 | UVW (LB.) | 3,183 |
| CARRYING CAPACITY (LB.) | 1,201 | EXT. LENGTH (BUMPER TO HITCH) | 19' 6" |



16 BHX

| | | | |
|--------------------------------|-------|--------------------------------------|--------|
| HITCH WEIGHT (LB.) | 454 | UVW (LB.) | 3,109 |
| CARRYING CAPACITY (LB.) | 1,345 | EXT. LENGTH (BUMPER TO HITCH) | 19' 6" |



22 EPIC

| | | | |
|--------------------------------|-------|--------------------------------------|---------|
| HITCH WEIGHT (LB.) | 594 | UVW (LB.) | 4,806 |
| CARRYING CAPACITY (LB.) | 2,000 | EXT. LENGTH (BUMPER TO HITCH) | 25' 11" |



23 BHS

| | | | |
|--------------------------------|-------|--------------------------------------|--------|
| HITCH WEIGHT (LB.) | 762 | UVW (LB.) | 5,872 |
| CARRYING CAPACITY (LB.) | 1,890 | EXT. LENGTH (BUMPER TO HITCH) | 28' 4" |



23 MKS

| | | | |
|--------------------------------|-------|--------------------------------------|--------|
| HITCH WEIGHT (LB.) | 736 | UVW (LB.) | 5,654 |
| CARRYING CAPACITY (LB.) | 1,500 | EXT. LENGTH (BUMPER TO HITCH) | 28' 2" |



AURORA TRAVEL TRAILERS

24 RBS

| | |
|--------------------------------------|--------|
| HITCH WEIGHT (LB.) | 892 |
| CARRYING CAPACITY (LB.) | 1,500 |
| UVW (LB.) | 6,200 |
| EXT. LENGTH (BUMPER TO HITCH) | 28' 1" |



| | |
|--------------------------------------|--------|
| HITCH WEIGHT (LB.) | 854 |
| CARRYING CAPACITY (LB.) | 2,677 |
| UVW (LB.) | 6,977 |
| EXT. LENGTH (BUMPER TO HITCH) | 29' 4" |



26 FKDS

| | |
|--------------------------------------|--------|
| HITCH WEIGHT (LB.) | 888 |
| CARRYING CAPACITY (LB.) | 2,000 |
| UVW (LB.) | 7,124 |
| EXT. LENGTH (BUMPER TO HITCH) | 33' 7" |



29 QBS

| | |
|--------------------------------------|-------|
| HITCH WEIGHT (LB.) | 1,024 |
| CARRYING CAPACITY (LB.) | 1,932 |
| UVW (LB.) | 7,892 |
| EXT. LENGTH (BUMPER TO HITCH) | 36' |



29 TQS

| | |
|--------------------------------------|--------|
| HITCH WEIGHT (LB.) | 1,236 |
| CARRYING CAPACITY (LB.) | 2,000 |
| UVW (LB.) | 9,130 |
| EXT. LENGTH (BUMPER TO HITCH) | 36' 8" |



32 MAZE

| | |
|--------------------------------------|---------|
| HITCH WEIGHT (LB.) | 1,062 |
| CARRYING CAPACITY (LB.) | 1,500 |
| UVW (LB.) | 8,842 |
| EXT. LENGTH (BUMPER TO HITCH) | 35' 10" |

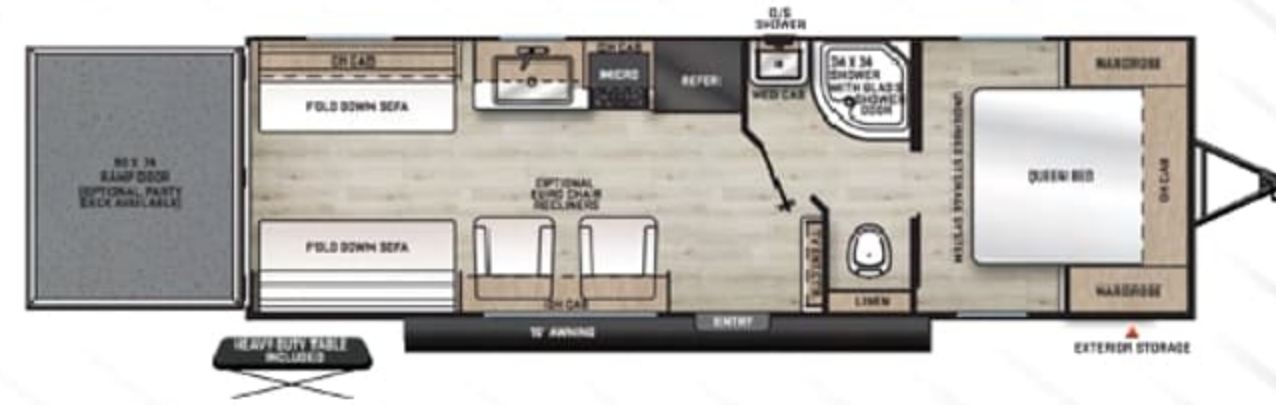


32 RLTS

AURORA TOY HAULERS

26 ATH

| | |
|--------------------------------------|-------|
| HITCH WEIGHT (LB.) | 900 |
| CARRYING CAPACITY (LB.) | 2,663 |
| UVW (LB.) | 5,237 |
| EXT. LENGTH (BUMPER TO HITCH) | 30' |



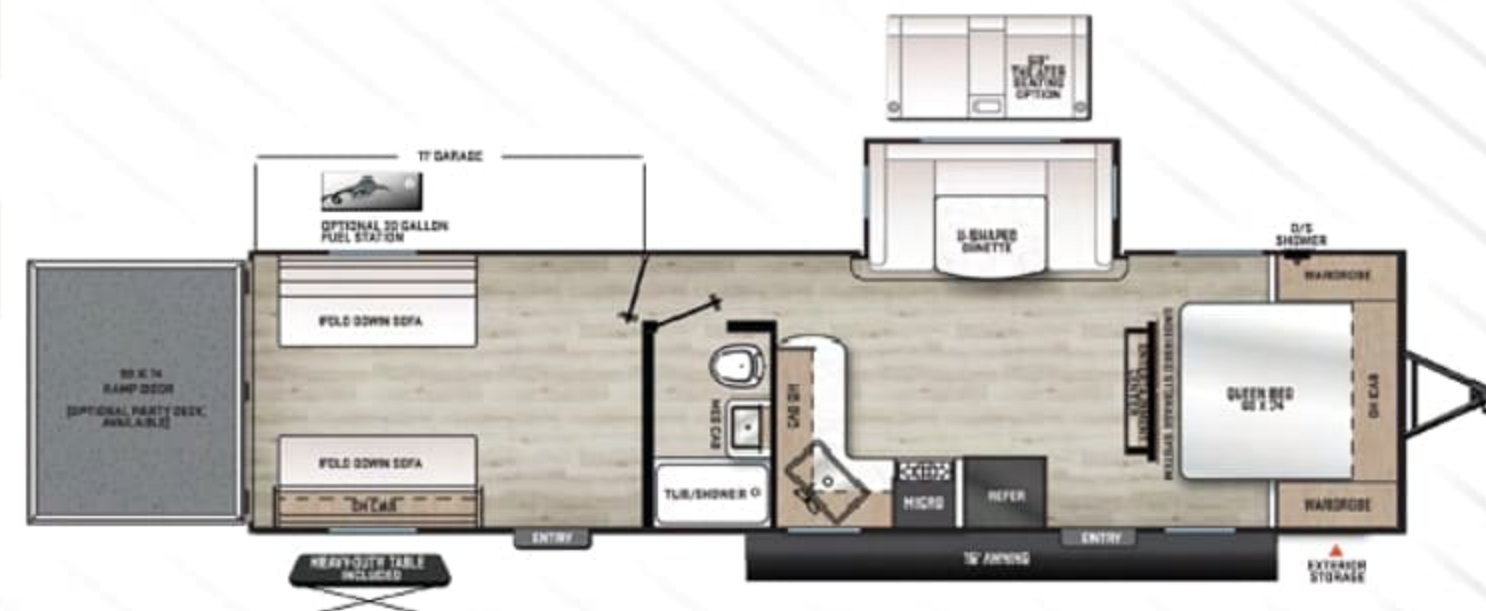
27 ATH

| | |
|--------------------------------------|---------|
| HITCH WEIGHT (LB.) | 1,298 |
| CARRYING CAPACITY (LB.) | 3,000 |
| UVW (LB.) | 7,784 |
| EXT. LENGTH (BUMPER TO HITCH) | 33' 10" |



29 ATH

| | |
|--------------------------------------|--------|
| HITCH WEIGHT (LB.) | 1,214 |
| CARRYING CAPACITY (LB.) | 3,000 |
| UVW (LB.) | 7,438 |
| EXT. LENGTH (BUMPER TO HITCH) | 35' 8" |



THE AURORA ADVANTAGE

WHAT IS THE AURORA ADVANTAGE?

It's the collection of unique features offered in an Aurora RV to ensure a smoother ride, a better camping experience, and a trailer that will last for years.

- Full GE Kitchen Suite Appliances
- 60K BTU GE Tankless Water Heater
- Roof Mount A/C with Heat Pump
- Solid Surface Countertops in Kitchen *
- Porcelain Toilet IPO Plastic *
- 2-Way 12V Maxxair Vent Fan in Living Room *
- Flip Down Solid Steps
- Screwed Cabinet Construction with Pocket Bored Lumber Core Stiles
- Front Radius Lights
- Norco Electromagnetic, Powder Coated Chassis

* — N/A Aurora Light Travel Trailers

EACH NEW FOREST RIVER PURCHASE PROVIDES:

- ✓ Pre-delivery Inspection.
- ✓ Digital Owner's Manual.
- ✓ Free Membership to Forest River Owners Group (FROG).
Learn more at www.forestriverfrog.com.
- ✓ A Contribution to Care Camps Foundation www.carecamps.org.
- ✓ 1 Year Free Roadside Assistance from Date of Purchase.



LEARN MORE:

Scan this QR code with your mobile device to learn more about Forest River.



SPECIFICATION DEFINITIONS:

Scan this barcode using a QR reader on your smartphone to learn RV terminology and more!



YOUR AURORA DEALER

All information contained in this brochure is believed to be accurate at the time of publication. However, during any model year, it may be necessary to make changes to the manufacturing process of the units and information in this brochure. Your unit may differ from the information in this brochure due to any changes in the manufacturing process and equipment. Forest River, Inc., reserves the right to make all such changes without notice, including prices, colors, combinations, materials, equipment and specifications of any model as well as the addition of new models and the discontinuance of models shown in this brochure. Therefore, please consult with your Forest River dealer and confirm the availability of any materials, combinations, designs, or specifications that are meaningful to your purchase decision. © 2025 Forest River RV, a Division of Forest River, Inc., a Berkshire Hathaway Company. All Rights Reserved. Forest River, Inc. 12/25

AURORA

Forest River RV, a Division of Forest River, Inc.,
A Berkshire Hathaway Company
P.O. Box 3030, Elkhart, IN 46515-3030