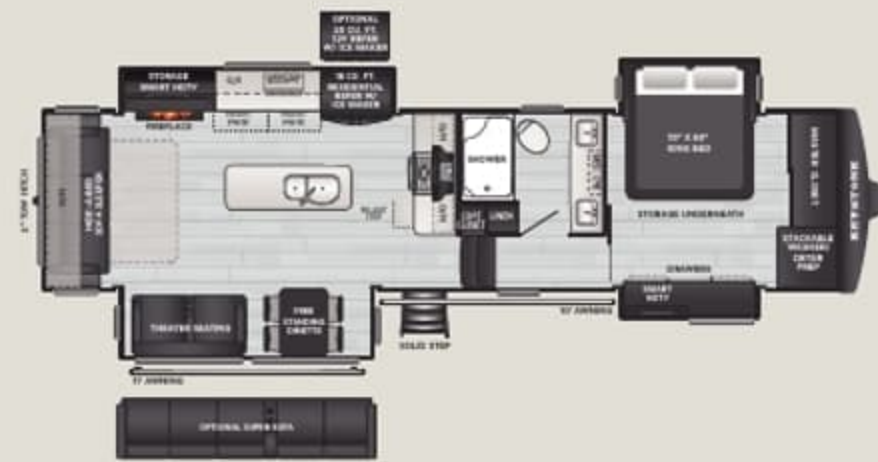




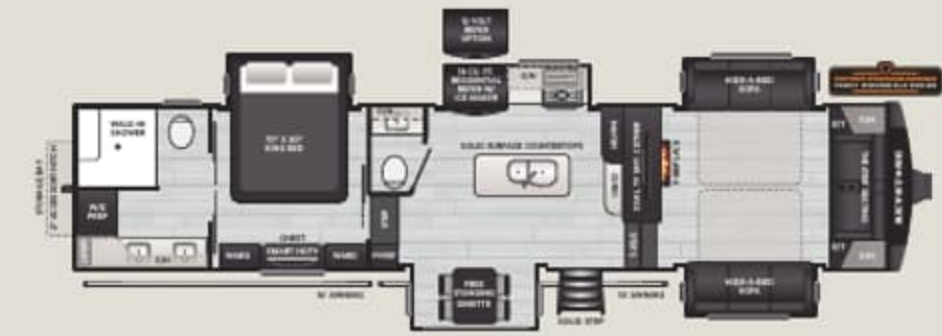
FLOORPLAN COMING SOON

NEW

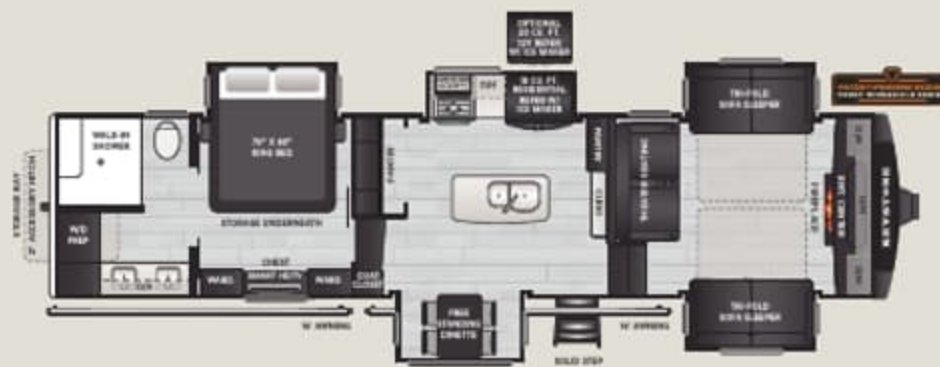
3100RE | WEIGHT TBD | LENGTH 34' 11"



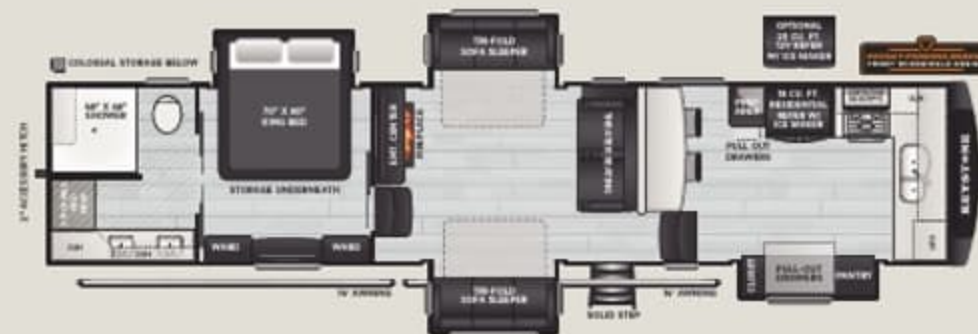
3303CK | WEIGHT 13585 | LENGTH 37' 3"



3710FL | WEIGHT 14815 | LENGTH 41' 5"



3712KB | WEIGHT 14740 | LENGTH 42' 5"



3820FK | WEIGHT 14335 | LENGTH 41' 11"



3910RK | WEIGHT 14980 | LENGTH 42' 11"



STANDARD FEATURES & OPTIONS

INTERIOR

- ◆ 100" Wide Body Construction
- ◆ 35k BTU Gas Furnace
- ◆ 16.5k BTU Electric Heat Pump
- ◆ Attic Vents in All Models
- ◆ Day and Night Roller Shades
- ◆ Dovetail and Lodge Decor Options
(SEE KEYSTONERV.COM FOR DETAILS)
- ◆ Hardwood Cabinet Doors, Drawers, And Stiles
- ◆ Solid Surface Counters
- ◆ Range w/ 3.73 cu. ft. Oven
- ◆ 30" Microwave
- ◆ Furrion 19.6 cu. ft. 12V Refrigerator Or 18 cu. ft. Residential Refrigerator - Both Models Come With Ice Maker
- ◆ Stackable Washer/Dryer Prep
- ◆ Dual Coleman® -Mach® Power Saver™ Quiet Series 15K BTU Air Conditioners W/ 3rd 13.5K BTU A/C Standard
- ◆ Blade Pure™ High-Performance Air Flow System w/ Merv 9 Filtration
- ◆ 75-Gallon Fresh Water Tank
- ◆ On-Demand Tankless Water Heater
- ◆ Central Vacuum
- ◆ Power Recliner Theatre Seats

EXTERIOR

- ◆ Drop-Frame Chassis
- ◆ NEW 8,000 lb Axles
- ◆ NEW TPMS Tire Monitoring System w/ Screen
- ◆ NEW TCS w/ABS brakes
- ◆ NEW Electric Gate Valves
- ◆ NEW H Rated Tires
- ◆ Dramatic High Ceilings w/ 6' 10" Tall Summit Slides
- ◆ High Gloss Exterior Sidewalls
- ◆ Panoramic Frameless Windows
- ◆ Norco BAL® G 5.5 Slideout Mechanism
- ◆ Flush Floor Kitchen Slides
- ◆ Lippert Titan™ Hydraulic Auto-Leveling System w/ Digital Touchscreen & Under Frame LED Lighting
- ◆ Fully Painted, Molded Front Cap
- ◆ Road Armor™ Suspension w/ 1/2" Shackle Plates
- ◆ Road Armor™ Rubberized Hitch Pin
- ◆ Cooper G-Rated Tires
- ◆ Exclusive Four-Season RV Polar Pack™ Climate Protection
- ◆ Thermashield 37 Insulation
- ◆ Back-up and Side Camera Prep
- ◆ Large, Insulated Slam Latch Baggage Doors
- ◆ 12V Electric Power Cord Reel
- ◆ SolarFlex™ Protect
- ◆ Water Filtration
- ◆ 3-Way Pass-through Switches for Slides/Awnings
- ◆ Strut Assisted Solid Step

OPTIONS

- ◆ Full Body Paint Options Available: Blue Slate, Copper Mist, Black Frost
- ◆ Optional Super Sofa *(SELECT MODELS)*
- ◆ Frameless Dual-Pane Windows
- ◆ Slide Awning Package
- ◆ Generator Prep
- ◆ Onan 5500 Generator Installed
- ◆ Power Roof Vent in Main Bathroom
- ◆ SolarFlex™ Discover
- ◆ Dragonfly® Energy Lithium-Ion Batteries

