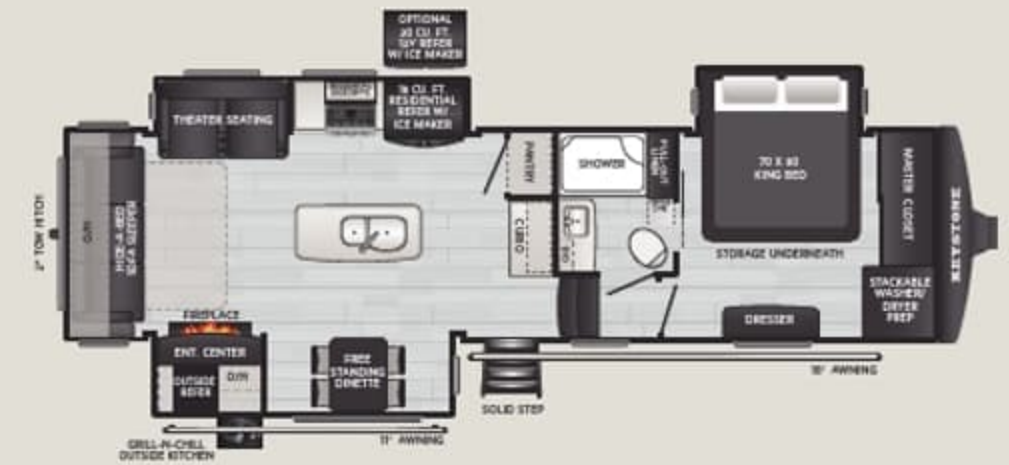


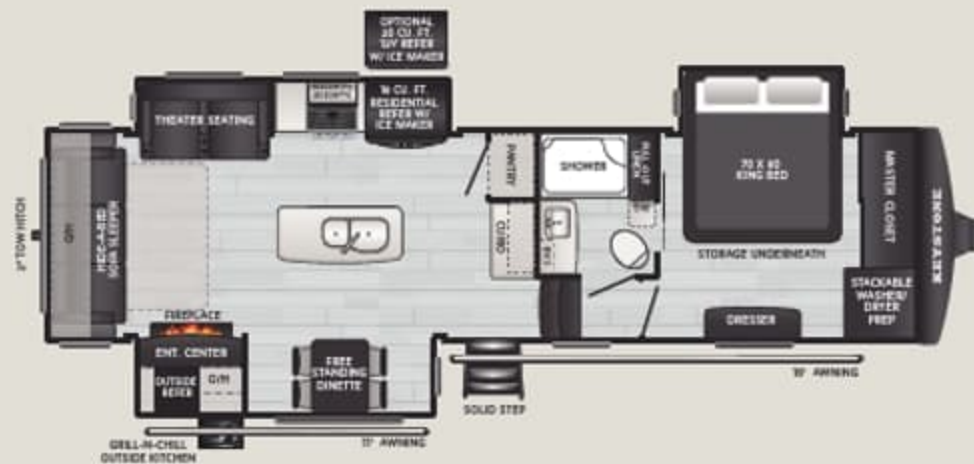
352 WEIGHT 15890 LENGTH 39' 6"



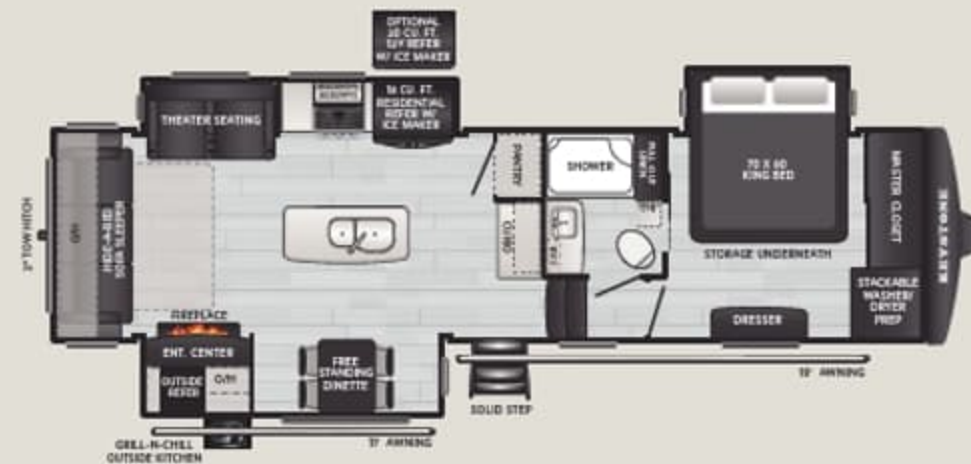
415 WEIGHT 17170 LENGTH 44' 6"



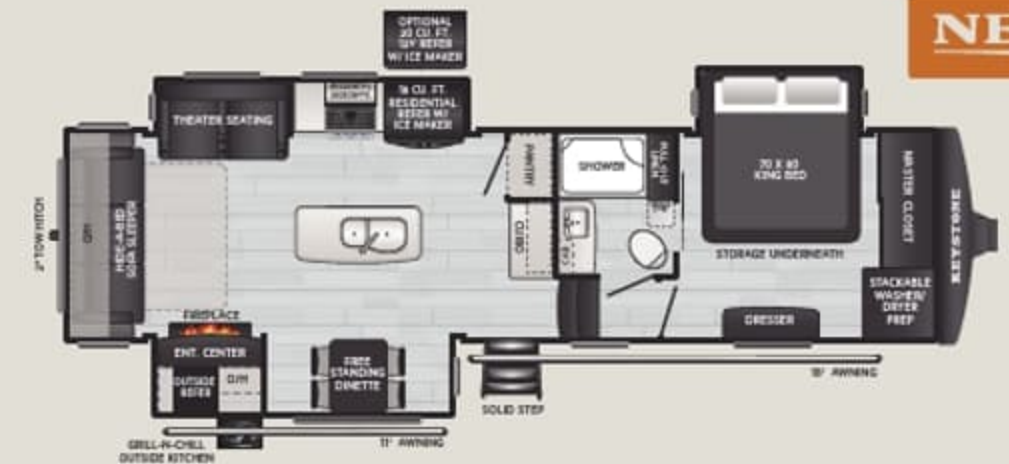
430 WEIGHT 17340 LENGTH 45' 10"



433 WEIGHT 17515 LENGTH 45' 9"

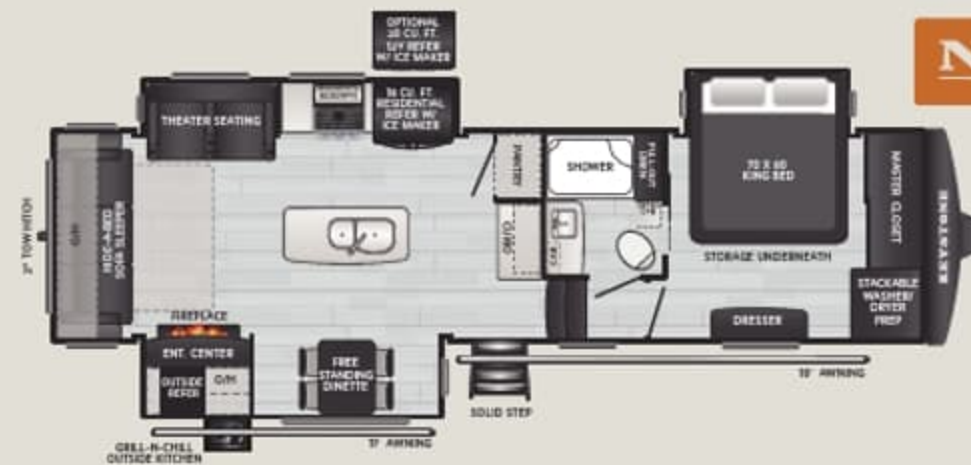


441 WEIGHT 17385 LENGTH 45' 9"



441HB WEIGHT 17580 LENGTH 45' 9"

NEW



444 WEIGHT 12365 LENGTH 40' 7"

NEW



STANDARD FEATURES & OPTIONS

INTERIOR

- ◆ Interior Design Overhaul
- ◆ NEW Floorplans/Floorplan Redesigns
- ◆ New Electric Motorized Side Patio Floorplan
- ◆ NEW Island Design w/ (3) Free Standing Bar Stools, Raised Bar Top, (2) Built in Trash Cans, Cutting Board, 11" Bank of Drawers, Paper Towel Holder, And Cabinet w/ Pull Out Shelf (Patent Pending)
- ◆ NEW Cabinet Construction
- ◆ Drop Down Magnetic Knife Holder
- ◆ Dining Table with Flip Up Top and Silverware Storage
- ◆ Adjust-A-Track™ Frame Welded Tie Downs & 38 Points of Contact
- ◆ Oversized Dovetail Storage
- ◆ Upgraded 20 cu. ft. 12V Refrigerator
- ◆ Standard Klipsch® Living Room Sound Bar & 10" Subwoofer
- ◆ 173 Galon Fresh Water Capacity
- ◆ Fresh Water Filtration System
- ◆ NEW Bathroom Design
- ◆ NEW Larger Shower
- ◆ NEW Pull-Out Linen Storage
- ◆ Larger Vanity Countertops

EXTERIOR

- ◆ NEW Exterior Graphics and Full Body Paint Available: Matte Black, Matte White, Wake Surf Teal, Wake Surf Black, Wake Surf Gray, Wake Surf Freedom
- ◆ Electric Through Frame Flush Floor Slides
- ◆ NEW Front Cap with Integrated LED Lights
- ◆ 105 Cubic Foot Pass Through Storage with Additional Top Down Battery Compartment Access Door
- ◆ Best In Class Standard 8K LBS. Dexter® Axles
- ◆ 17.5 Inch Rims With H-Rated Sailun Tires & TPMS
- ◆ Upgraded Dexter® Suspension
- ◆ Curt Helux™ 24k Pin Box with Coil Spring and Gas Shock
- ◆ Improved GVWR Rating
- ◆ Rear And Side View Cameras
- ◆ Keystone Exclusive Power Ramp Door
- ◆ RV Mobile Power™ Dual Fuel Flex Power®, Fuel Injected Generator 5500e
- ◆ Collapsible Solid Four Step Garage and Main Entry Steps
- ◆ MORryde Safe-T-Rail Collapsible Grab Handle
- ◆ Square Windows with Integrated Blinds
- ◆ Power Dump Valves for Gray and Black Tanks
- ◆ 50-AMP Power Cord Reel
- ◆ Integrated Air Compressor

- ◆ Banded TPMS System
- ◆ Triple Girard® Cassette Awnings
- ◆ New Skirt Metal & Fender
- ◆ Standard Klipsch® Outdoor Sound System w/ Enclosed 10" Sub, 7" Speakers, And 400 Watt Amplifier

OPTIONS

- ◆ NEW Exterior Graphics and Full Body Paint Available: Matte Black, Matte White, Wake Surf Teal, Wake Surf Black, Wake Surf Gray, Wake Surf Freedom
- ◆ Optional Washer and Dryer
- ◆ SolarFlex™ Discover
- ◆ Three Season Sliding Rear Patio Doors
- ◆ DragonFly® Energy Lithium-ion Heated Batteries