

Renegade RV



CLASS C DIESEL

2026 XL

Version 2026.1 • Current as of 9/04/2025

All Features Are Subject To Change Without Notice Or Obligation

HIGH-END THAT MAKES A STATEMENT

The 2026 Renegade XL is a Super C RV that's ready for tomorrow's next great adventure. With porcelain tiled floors, beautiful quartz countertops and hardwood maple cabinetry, the Renegade XL gives you the ability to travel in style while allowing you to have all the comforts of home. Experience an unparalleled level of craftsmanship, along with integrated technology that prepares you for the journey ahead.

LENGTH	TOWING CAPACITY	BATHROOMS
43' 6"-44' 11"	30,000 lbs	1-2

EXTERIOR PAINT OPTIONS



ECLIPSE



MERIDIAN



NEBULA



SOLSTICE



ZENITH



POLARIS



TUNDRA



ATLAS LR



MOJAVE

AVAILABLE FLOORPLANS



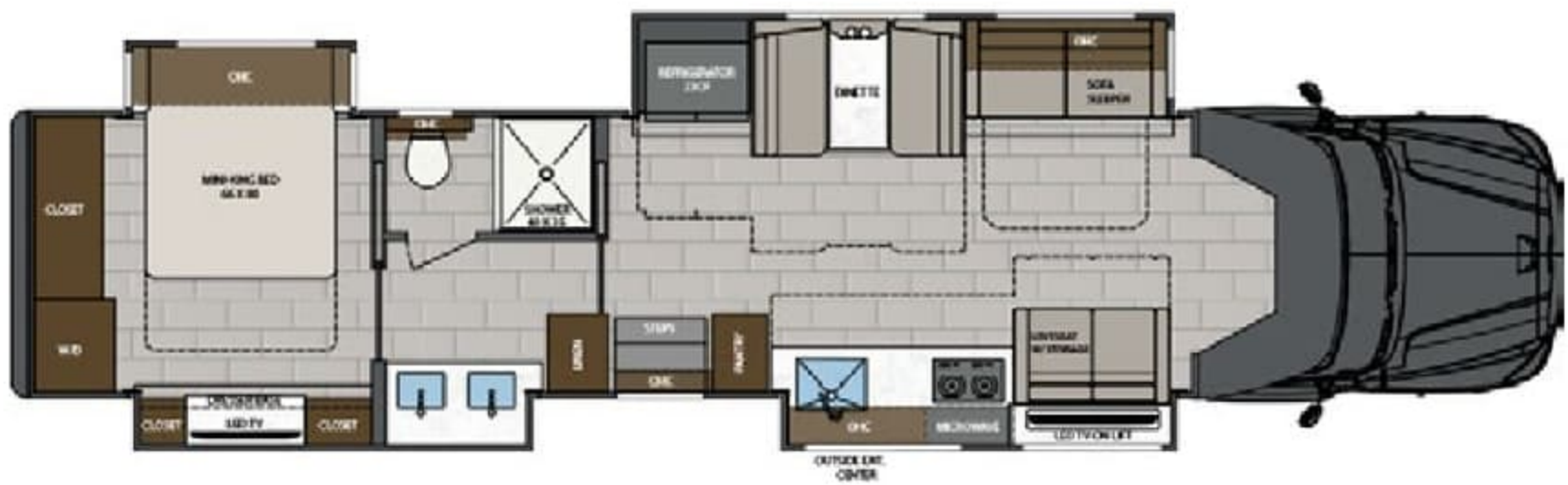
X43DB



X45BBC



X450BM



X450S

INTERIOR DETAILS



Dark Truffle Cabinetry // Nordic Interior Décor // The Renegade XL gives you the ability to travel in style with all the comforts of home.



Dark Truffle Cabinetry // Nordic Interior Décor // Relax in your comfortable Mastrotto® Italian hide leather furniture.



Dark Truffle Cabinetry // Nordic Interior Décor // Enjoy home-cooked meals wherever you adventure with this kitchen.



Dark Truffle Cabinetry // Nordic Interior Décor // The bedroom comes with a memory foam mattress, lots of storage and a TV.



Dark Truffle Cabinetry // Nordic Interior Décor // The porcelain toilets are macerating with a push button flush.



Dark Truffle Cabinetry // Nordic Interior Décor // The bathroom features a solid surface shower with an accent tile wall, floor inlay, an integrated niche and a sliding glass door.



Dark Truffle Cabinetry // Nordic Interior Décor // Drive with ease and peace of mind thanks to features like the 360° camera system with back-up and side view features.



Dark Truffle Cabinetry // Nordic Interior Décor // The 2026 XL offers spacious living, upscale finishes and the flexibility to fit your lifestyle on the road.

INTERIOR DÉCOR OPTIONS



Nordic Décor



Bathroom Backsplash



Bedsread



Countertop (Option 1)



Countertop (Option 2)



Flooring



Kitchen Backsplash (Option 1)



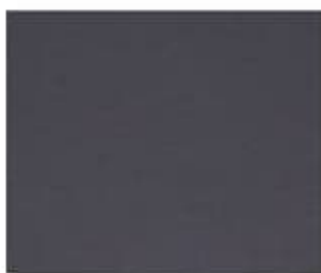
Kitchen Backsplash (Option 2)



Pillows



Shower Floor



Valance Accent



Valance



Pinnacle Décor



Bathroom Backsplash



Bedsread



Countertop (Option 1)



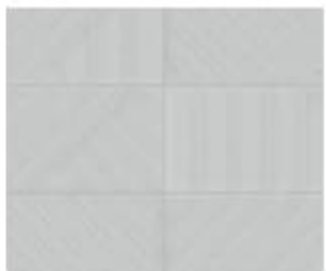
Countertop (Option 2)



Flooring



Kitchen Backsplash (Option 1)



Kitchen Backsplash (Option 2)



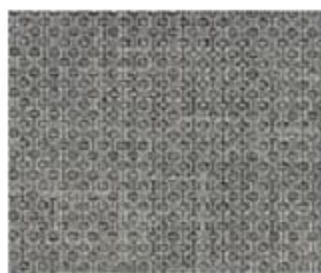
Pillows



Shower Floor



Valance Accent



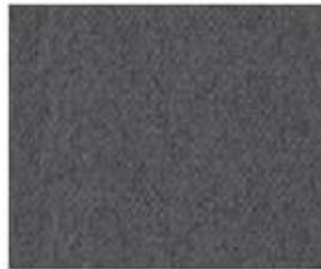
Valance



Slate Décor



Bathroom Backsplash



Bedsread



Countertop (Option 1)



Countertop (Option 2)



Flooring



Kitchen Backsplash (Option 1)



Kitchen Backsplash (Option 2)



Pillows



Shower Floor



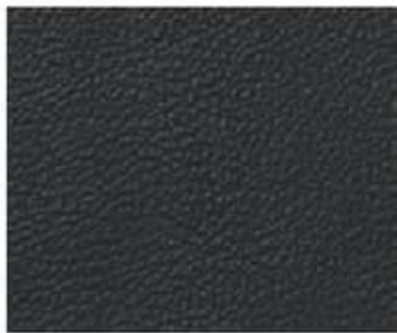
Valance Accent



Valance



Furniture Options



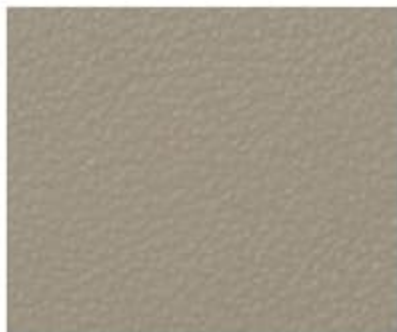
Linea Antracite



Linea Castagna



Linea Cenere



Linea Grigio Perla



Solid Wood Cabinetry Options



Cape Cod



Dark Truffle



Essence White



Lakewood



Rockport



BUILT BY THE BOLD, FOR THE BOLD

We became one of the world's top motorhome brands by building extraordinary coaches. We remain the industry rebels by continuously challenging the status quo in terms of quality, value, power, versatility, durability and style. Starting with the best chassis, and ending with a motorhome that outperforms and outlasts - Renegade RVs are designed for extreme luxury and extreme adventure. Renegade RVs are built for you.

STANDARDS & OPTIONS

	43DB	45BBC 45DBM 45QS
Overall Exterior Length	43' 6"	44' 11"
Exterior Width	99.25"	99.25"
Overall Exterior Height (Includes 15,000 BTU Roof Air Conditioners)	13' 6"	13' 6"
Interior Height	90"	90"
Fuel Tank Capacity	120 Gallons	120 Gallons
Fresh Water	150 Gallons	150 Gallons
Gray Water	75 Gallons	75 Gallons
Black Water	75 Gallons	75 Gallons

CHASSIS AND CAB

- Freightliner® Cascadia 126, Western Star 57X (Tandem Axle) or Peterbilt® 567 (Twin Screw)
- Detroit® DD16 Engine with 600HP, 1,850 ft. lb. Torque
- 58,000 lbs GVWR
- Allison® TRV4000 Electronic 6-Speed Transmission (Freightliner Only) or Detroit® DT12 12-Speed Transmission
- 30,000 lbs Towing Capacity
- Single 120-Gallon Aluminum Fuel Tank & 13-Gallon DEF Tank
- Polished Aluminum Wheels with Center Caps
- Airliner® Rear Air Suspension
- Auto Drain Valve for Air Brake Reservoirs
- Digital Dash Cluster and 10" Infotainment System with AM-FM Radio, Bluetooth, Apple® Carplay™, and Android® Auto™ Compatible
- 360° Camera System with Back-Up and Side View Features
- Upgraded Cab Sound System
 - Amplified Cab Speakers
 - Powered 8" Subwoofer
- Premium Freightliner® Sound and Thermal Insulation Package
- LED Headlight with Bumper-Integrated Fog Lights
- Power Windows and Door Locks
- Power/Heated Remote-Control Mirrors
- Air Ride, Heated and Cooled Driver and Passenger Seat Pedestals With Swivels
- Leather Driver/Passenger Seats with Armrests
- Full Cab Mat
- Auxiliary Air Chuck And Hose
- Freightliner® Safety Assurance Package:
 - Collision Mitigation
 - Adaptive Cruise Control
 - Lane Departure Warning
 - Detroit® Connect Safety Event Viewer Package

EXTERIOR FEATURES

- Aerodynamic Fiberglass Front and Rear Caps and Transition
 - Four-Point Hydraulic Leveling System with App
 - Lighted Exterior Entry Door Assist Handle
 - Keyless Entry
 - Powered Sliding Double-Entry Steps
 - (9) Colorway Paint Options
 - Dual, Roof-Mounted Girard® 2-Stage Lateral Arm Awning with LED Lights Integrated into Front and Rear Fiberglass Caps
 - Slide Toppers with Covers
 - Frameless Dual-Pane Tinted Windows with Screens
 - Power Locking, Side-Swing Aluminum Compartment Doors with Single-Handle Paddle Latches and Double-Catch
 - Steel Storage Compartments with Highly Durable Bed Liner Surface
 - Diamond Shield™ Nano Fusion Paint Protection Film - Front Mask
 - Stainless-Steel Overlay Panels on Bottom Skirting (Roadside & Curbside)
 - Full-Width Rock Guard Mud Flap
 - Motion-Activated Compartment Lighting
-

CONSTRUCTION

- 2" Vacuum Laminated Sidewalls with Welded Aluminum Framing
- 1.5" High-Density Foam Insulation in Sidewalls and Roof
- Welded Aluminum Roof Truss System with Framed Cutouts
- "Super Sandwich" Floor Construction with Composite Underbelly
Includes:
 - 2" Welded Steel Floor Joist System Mounted to (6" And 1.5") Steel Longitudinal Floor Beams
 - 3/4" Fir Plywood Deck Over 2 X 4 Wood-Framed Residential Floor with Thermal and Sound-Deadening Insulation

PLUMBING SYSTEMS

- 150 Gallon Fresh Water Tank
- 75 Gallon Gray Tank
- 75 Gallon Black Tank
- See-Level® Tank Monitoring System
- Full Maintenance Wet Bay
 - Black Tank Flush System
 - Fresh Water Fill - City Water Hookup
 - Outside Faucet with Sprayer
- On-Demand Water Pump
- Whole House Water Filtration System

INTERIOR FEATURES

- (3) Interior Décor Options
- Décor Coordinating Wood Valances with Fabric Accents
- Double Roller-Manual Day/Powered Night Shades
- Soft Touch Padded Walls and Ceiling
- 12" x 24" Porcelain Heated Tile Flooring Throughout
- Maple Hardwood Cabinetry
- 5-Wood Stain Color Options, 2-Finish Options
- Dovetail Drawers on Soft Closing Slides
- Modular Drawer with Storage Peg System
- Framed Raised Panel Doors on Hidden Hinges
- Pantry with Push Release Drawer Guides
- Hardwood Slide Fascia with Lighting
- Decorative Ceiling Treatment with Lighting
- Polished Chrome Door Hardware
- Polished Chrome Kitchen Faucet
- Cambria® Quartz Countertops Throughout
- Rectangular Single Bowl Undermount Kitchen Sink with Colander, Rolling Grid, Sink Grid, and Cutting Board
- Accent Lighting at Countertops and Toe Kicks
- Grouted Tile Backsplash
- LED Dimmable Lighting
- Memory Foam Mattress
- Mastrotto® Italian Hide Leather Furniture
- Booth Dinette
- Sofa Sleeper, Hide-a-Bed
- Storage Loveseat (45DBM and 45QS only)
- Aerocap with Storage Cabinet

BATH

- Maple Hardwood Vanity, Medicine, and Linen Storage Cabinets
 - LED Lighted Vanity Mirror
 - Deluxe Polished Chrome Bath Faucet and Rain Shower Assembly with Body Sprayers
 - Polished Chrome Towel Bar, Towel Ring, and Toilet Paper Holder
 - Porcelain Macerator Toilet with Push Button Flush
 - Cambria® Quartz Countertop with Solid Surface Integrated Sink
 - Solid Surface Shower with Accent Tile Wall, Floor Inlay, Integrated Niche, and Sliding Glass Door
-

APPLIANCES

- 23 cu. ft. Samsung Bespoke® Refrigerator with Family Hub
- Recessed 2-Burner Induction Cooktop with Butcher Block Covers
- 1.7 cu. ft. Black Stainless Convection Microwave Oven
- Aqua-Hot® 600D Hydronic Water and Zone Heating System
- (3) 15,000 BTU Roof A/C with Heat Pumps and Plumbed Condensation Lines
- Ducted Air Conditioning
- MaxxAir® Deluxe Power Vents
- Central Vacuum System with Floor Sweep Feature
- Pre-Wired and Plumbed for Optional Washer/Dryer
- Carbon Monoxide, LP and Smoke Detectors, and Fire Extinguisher

ELECTRICAL SYSTEMS

- 12.5KW Onan® Quiet Diesel Generator
 - Automatic Generator Start System
 - 50-Amp Electrical Panel
 - Dual 3,000W True Sine Wave Inverters
 - Transfer Switch with Surge Protection
 - (4) High-Capacity Lithium Batteries (Total Capacity of 1080Ah)
 - (6) 200W Solar Panels
 - Multiplex Control System with Wi-Fi App Control and Touchscreen Switch Panels
 - USB/USB-C Charging in Living Area, Bedroom, Kitchen, and Bunk Areas
 - 50-Amp Power Retractable Shore Cord Reel
 - 12V Holding Tank Heaters, Gray and Black Tanks
-

ENTERTAINMENT SYSTEMS

- 50" 4K Smart LED TV in Living Area
- Bose® Soundbar Home Theater System with Bluetooth Streaming and Wireless Subwoofer in Living Area
- 43" 4K Smart LED TV and Bose® Soundbar in Bedroom
- Exterior Entertainment Center
 - 43" Smart LED TV on Swing Arm
 - Soundbar with Bluetooth Streaming
 - USB Charging
- Premium Rooftop Cell Booster
- Everest 2.0 5G Rooftop OTA Antenna with Aspen WiFi Router and 5G Ready (SIM Card Req.)
- Standard Starlink® with Mobility Mount

POPULAR OPTIONS

- Powered Reclining Theater Seat in lieu of Standard Sofa
- High Gloss Cabinet Finish
- Winegard® In-Motion Satellite System
- Winegard® Trav'ler Stationary HD Satellite System (N/A with Starlink®)
- Freightliner® Blackout Package - Grille, Bezel, Mirrors, and Wheels
- Washer and Dryer Stack
- Premium Exterior Refrigerator/Freezer on Slide Tray
- Holding Tank Sewage Macerator System
- ShowerMiser Water Management System with Electronic Sensor

THE RENEGADE RV WARRANTY

New Renegade motorhomes are covered by a 1-year unlimited miles limited warranty, plus a 3-year 36,000-mile limited structural warranty.

All Renegade motorhome chassis, engines and transmissions, and drivetrain warranties are provided and administered by their respective manufacturers.

For specific information about these warranties, [ask your dealer](#) or [contact Renegade RV](#).

RenegadeRV.com

